

# Regional Connector Transit Project

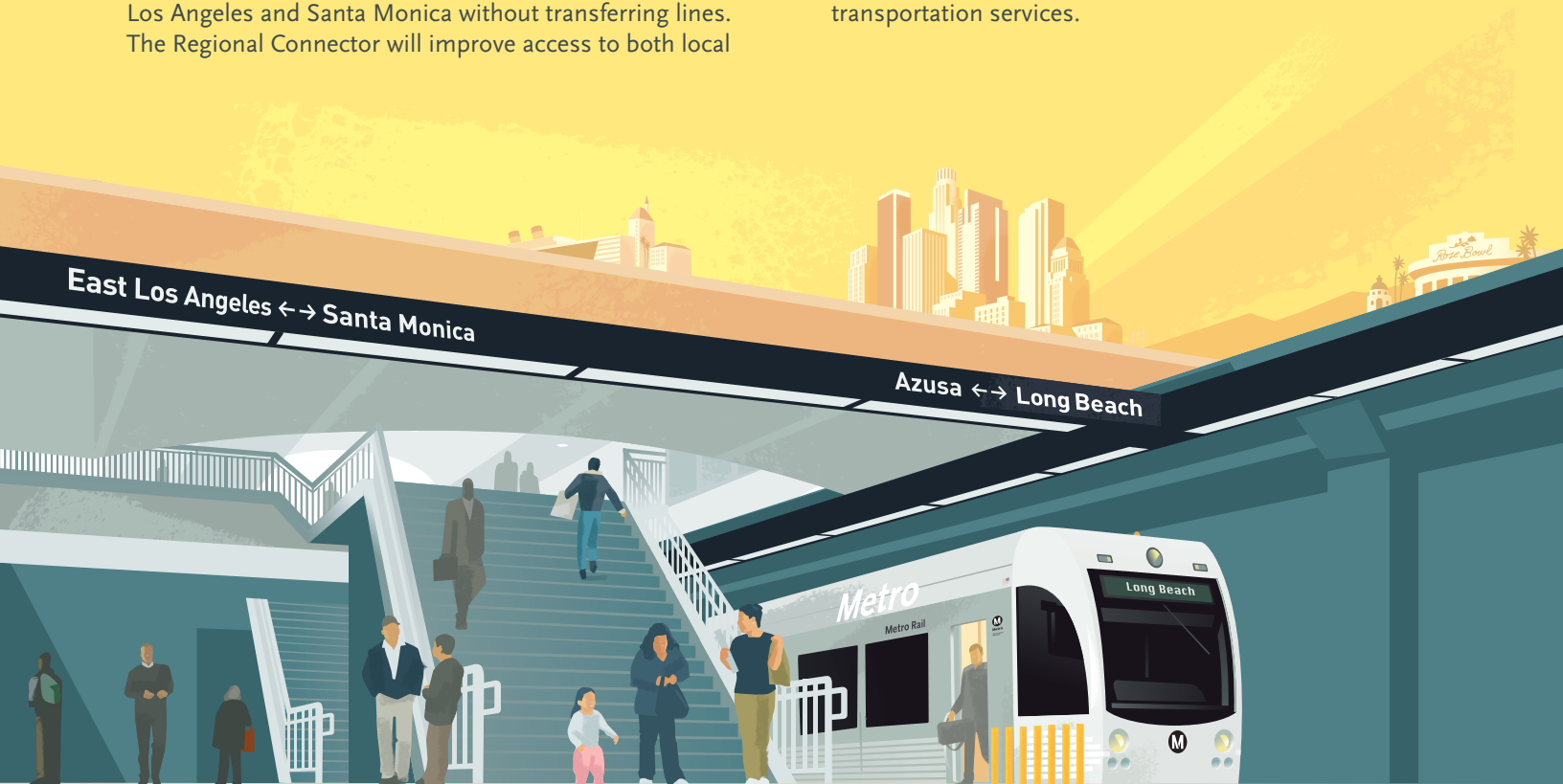
## Overview

The Regional Connector Project will extend from Metro Rail's Little Tokyo/Arts District Station to the 7th St/Metro Center in downtown Los Angeles, allowing passengers to access the Gold, Blue, Expo, Red and Purple lines. The 1.9-mile addition will serve Little Tokyo, the Arts District, Civic Center, the Historic Core, Broadway, Grand Av, Bunker Hill, Flower St and the Financial District.

The new Metro Rail extension will also provide a one-seat ride for travel across LA County. Passengers will be able to travel between Azusa and Long Beach and between East Los Angeles and Santa Monica without transferring lines. The Regional Connector will improve access to both local

and regional destinations by providing continuous service between these lines, as well as providing connectors to other rail lines at 7th St/Metro Center, greatly improving the connectivity of the region's transportation network.

This new Metro Rail extension will offer an alternative transportation option to congested roadways, provide significant environmental benefits and spur economic development throughout the County. Through improved connectivity, riders will be better able to use the entire Metro Rail system, municipal bus lines and other regional transportation services.








**Metro**<sup>®</sup>

## Project at a Glance

- > A 1.9-mile underground light rail system connecting Metro Rail's Gold Line to the 7th St/Metro Center
- > Direct connection between Azusa and Long Beach and between East Los Angeles and Santa Monica
- > Three new stations:
  - 1st St/Central Av
  - 2nd St/Broadway
  - 2nd Pl/Hope St
- > All stations will provide safe and convenient customer interfaces and site connectivity and will reflect Metro's systemwide state-of-the-art design standards
- > Life-of-Project Budget: \$1.366 billion
- > Forecasted opening: 2020

## Contact Us

For additional project information, to ask questions or provide comments, please use the following contact tools.

-  213.922.7277
-  [regionalconnector@metro.net](mailto:regionalconnector@metro.net)
-  [metro.net/regionalconnector](http://metro.net/regionalconnector)
-  @metroconnector
-  [metroregionalconnector](https://www.facebook.com/metroregionalconnector)

To learn about the role and responsibilities of the Regional Connector Community Leadership Council, please visit [metro.net/regionalconnector](http://metro.net/regionalconnector) or e-mail us at [rcclc@metro.net](mailto:rcclc@metro.net)

## Regional Connector Transit Project

