

Metro's Equity Program Tools

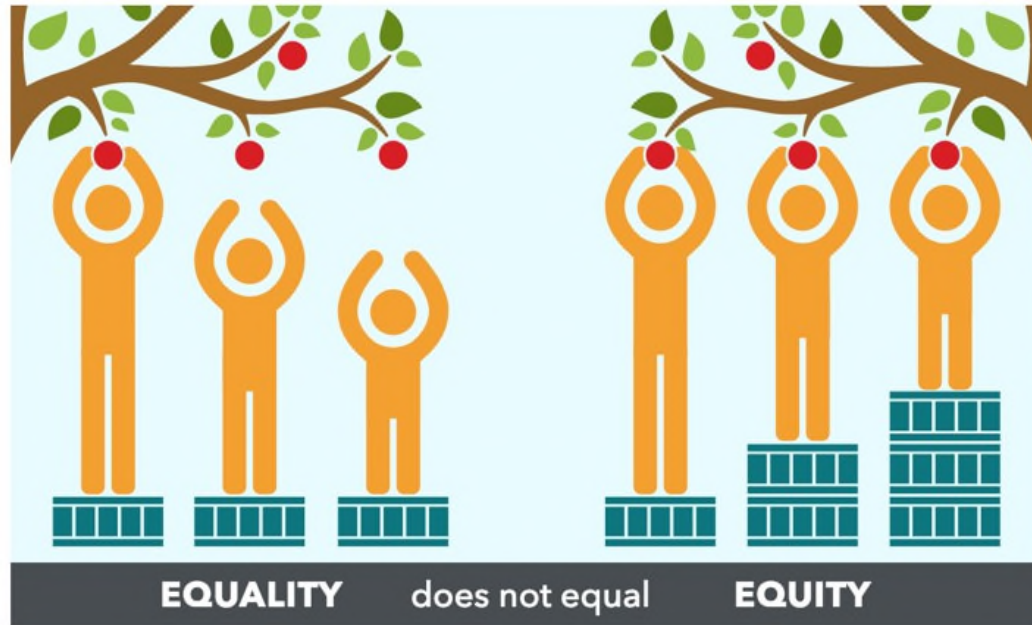
Presented by:

KeAndra Cylear Dodds

Executive Officer, Equity and Race



WHY DOES EQUITY MATTER?

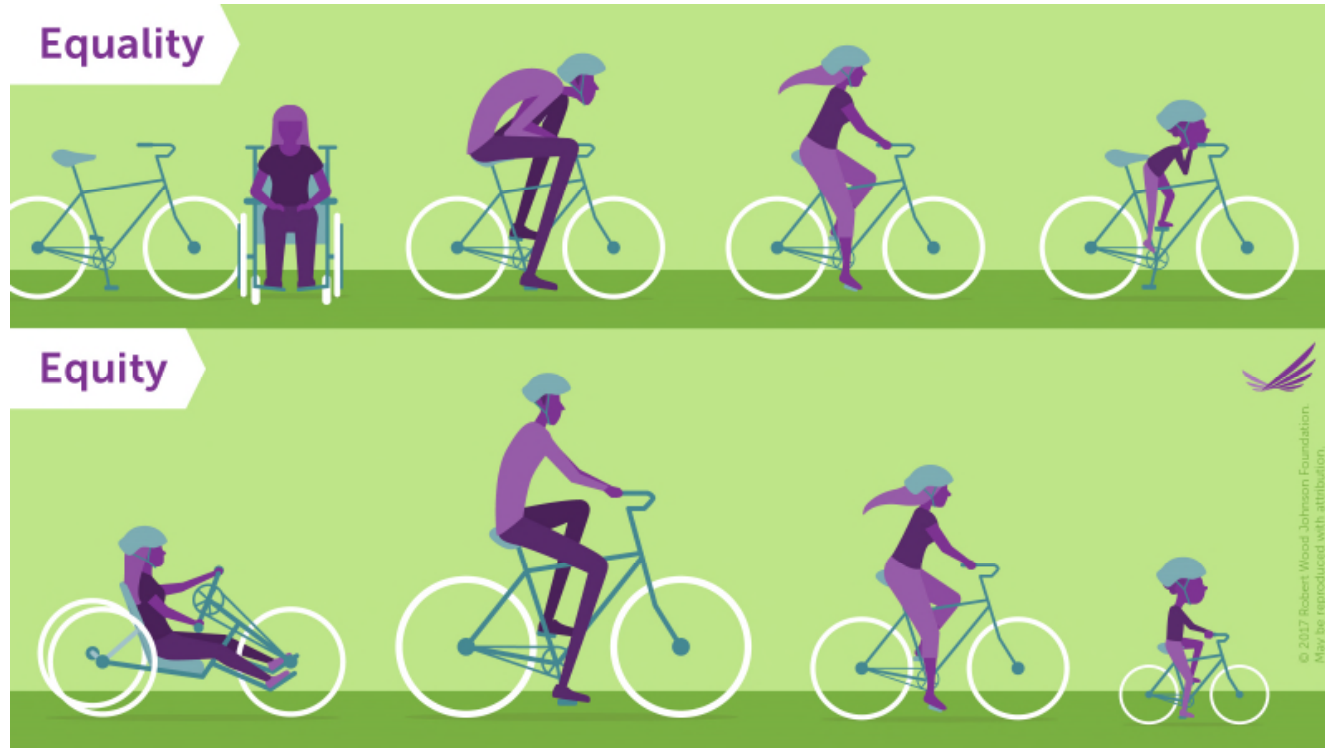


WHY DOES EQUITY MATTER?



Source: Matt Kinshella from Meyer Memorial Trust and Northwest Health Foundation Competition

WHY DOES EQUITY MATTER?



METRO EQUITY PLATFORM FRAMEWORK

- > Board Approved as of February 2018
- > Core Objective:
 - > Increase access to opportunity
- > Four Pillars
 - > Define and Measure
 - > Listen and Learn
 - > Focus and Deliver
 - > Train and Grow

METRO EQUITY PLATFORM FRAMEWORK

- > Four Pillars
 - > Define and Measure
 - > Listen and Learn
 - > Focus and Deliver
 - > Train and Grow

DEFINE AND MEASURE

- > Equity Focused Communities
 - > At least 40% of households are low-income (\$35,000 or less), **AND**
 - > At least 80% are households of color **OR** at least 10% of households have zero cars

DEFINE AND MEASURE

Equity is both an outcome and a process to address racial, socio-economic, and gender disparities, to ensure fair and just access – with respect to where you begin and your capacity to improve from that starting point – to opportunities, including jobs, housing, education, mobility options, and healthier communities.

It is achieved when one's outcomes in life are not predetermined, in a statistical or experiential sense, on their racial, economic, or social identities.

It requires community informed and needs-based provision, implementation, and impact of services, programs, and policies that reduce and ultimately prevent disparities.

METRO EQUITY PLATFORM FRAMEWORK

- > Four Pillars
 - > Define and Measure
 - > Listen and Learn
 - > Focus and Deliver
 - > Train and Grow

METRO EQUITY PLATFORM FRAMEWORK

- > Four Pillars
 - > Define and Measure
 - > Listen and Learn
 - > Focus and Deliver
 - > Train and Grow

METRO'S RAPID EQUITY ASSESSMENT

1. Will the decision impact historically marginalized communities or others most likely to be negatively impacted by the COVID-19 crisis?
2. Could this present an equity opportunity?
3. Who will benefit from and/or be burdened by this decision? Will the benefits be accessible regardless of ability?
4. How will the decision prioritize the needs of historically marginalized communities and others most likely impacted by the COVID-19 crisis?
5. What are your strategies to mitigate any potential negative consequences of this decision?
6. Summarize any adjustments or changes made to the decision due to the utilization of the rapid equity assessment.

METRO EQUITY PLATFORM FRAMEWORK

- > Four Pillars
 - > Define and Measure
 - > Listen and Learn
 - > Focus and Deliver
 - > **Train and Grow**

HOW CAN YOU HELP ADVANCE EQUITY?

- > Greater Community Involvement
- > Improved Service Evaluation
- > Regional Perspective

Q & A