

Mobility. Environment. Community. Economy. Technology



I-710 Corridor Project EIR/EIS

metro.net

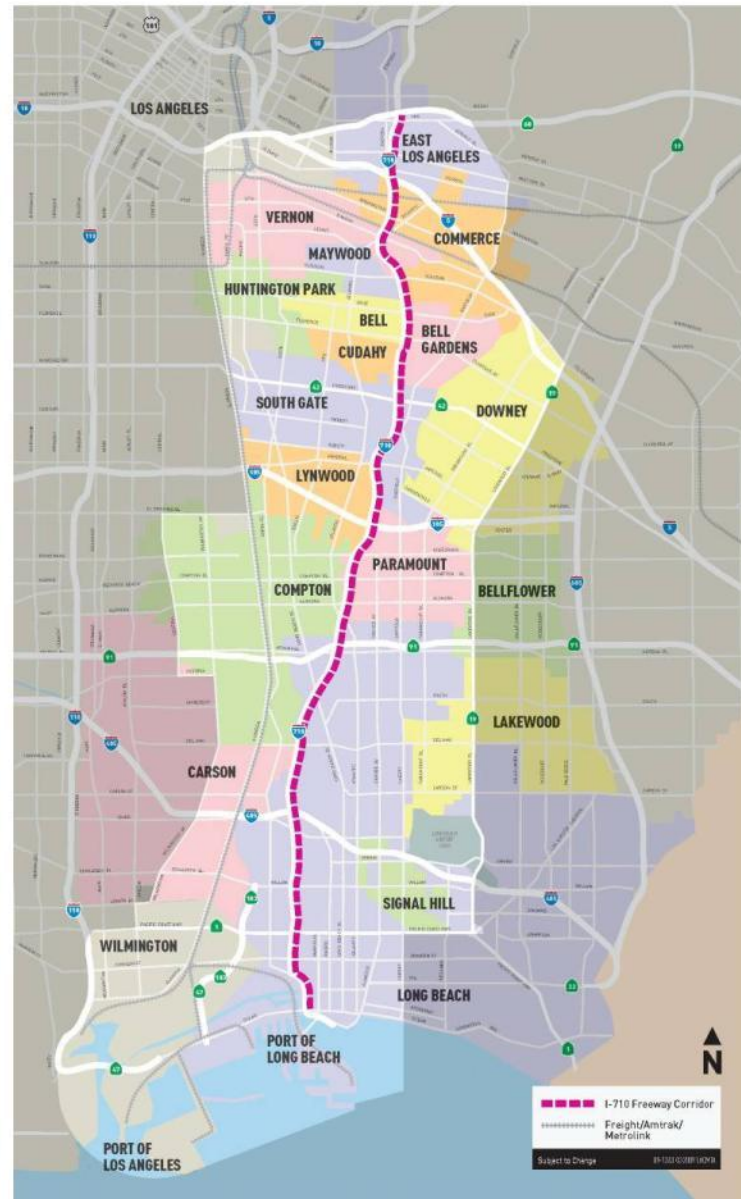
**I-710 Corridor Project EIR/EIS Update
presented to the
Streets and Freeways Subcommittee
March 21, 2013**



I-710 Study Area

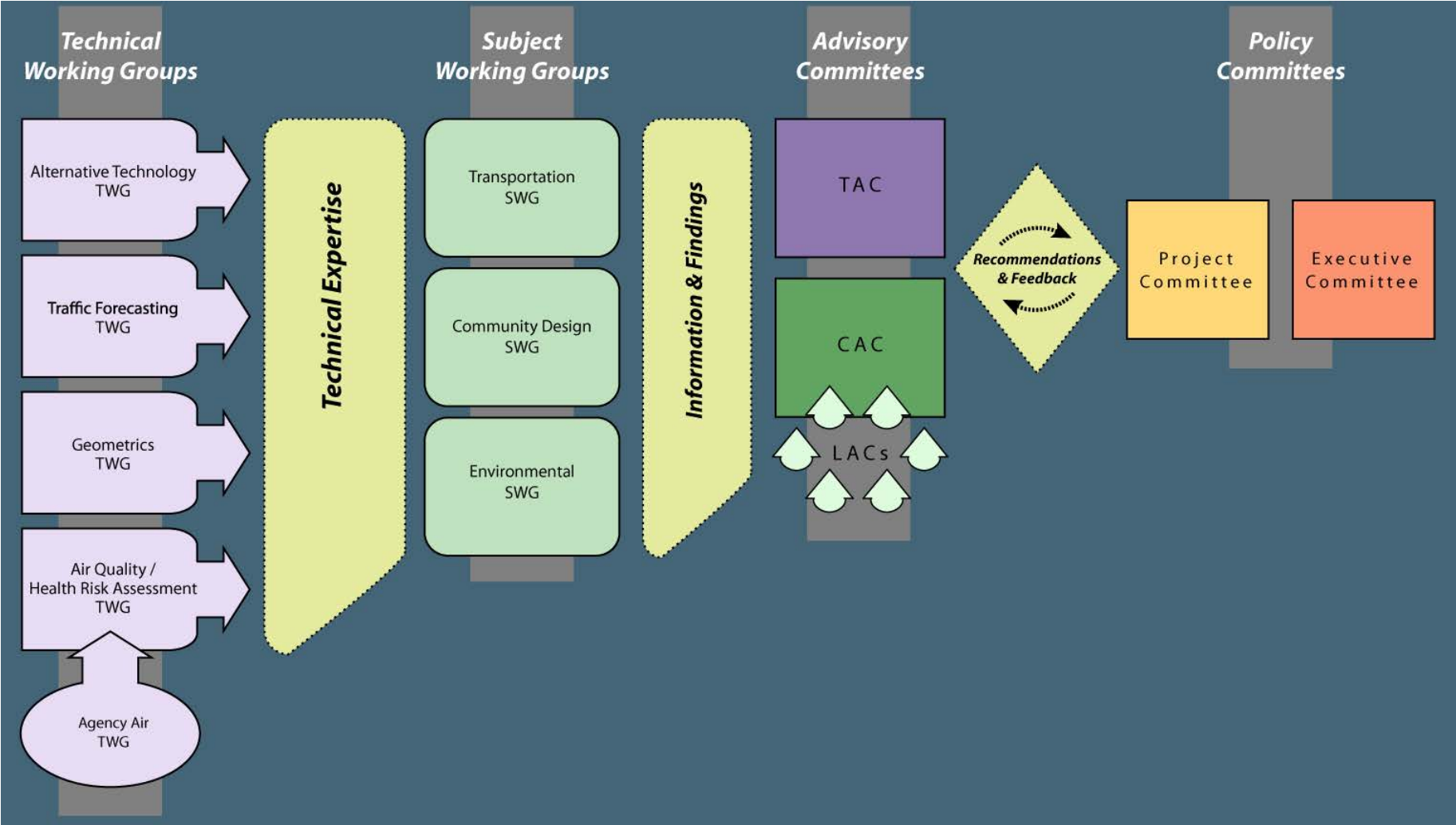
Background

- Located in South East Los Angeles County
- Addresses Mobility Challenges in the Corridor



I-710 Community Participation Framework

Metro Highway Program

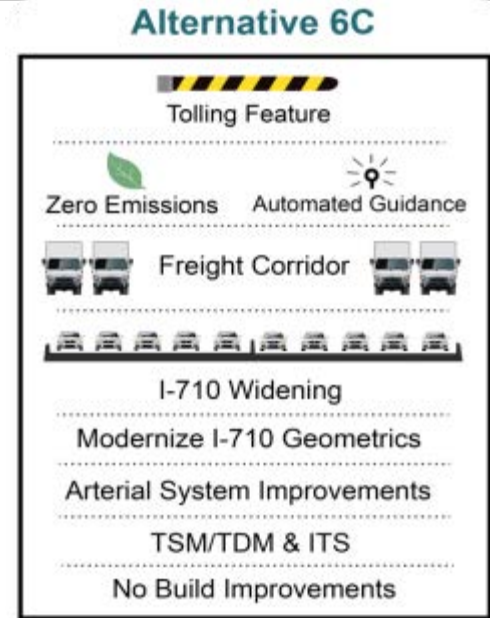
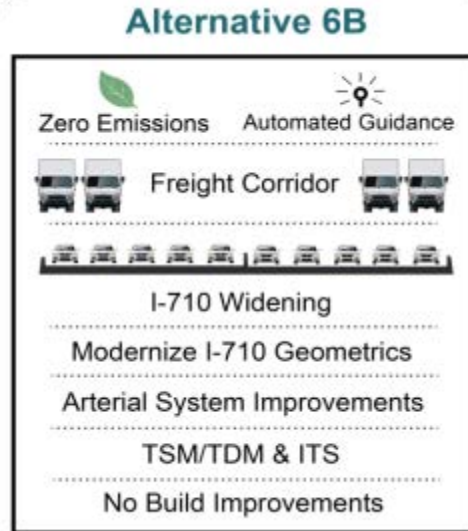


I-710 Purpose & Need

- Improve air quality and public health
- Improve traffic safety
- Provide a modern design for the I-710
- Address projected traffic volume increase
- Address projected growth in population, employment and economic activity related to goods movement



I-710 Key Elements

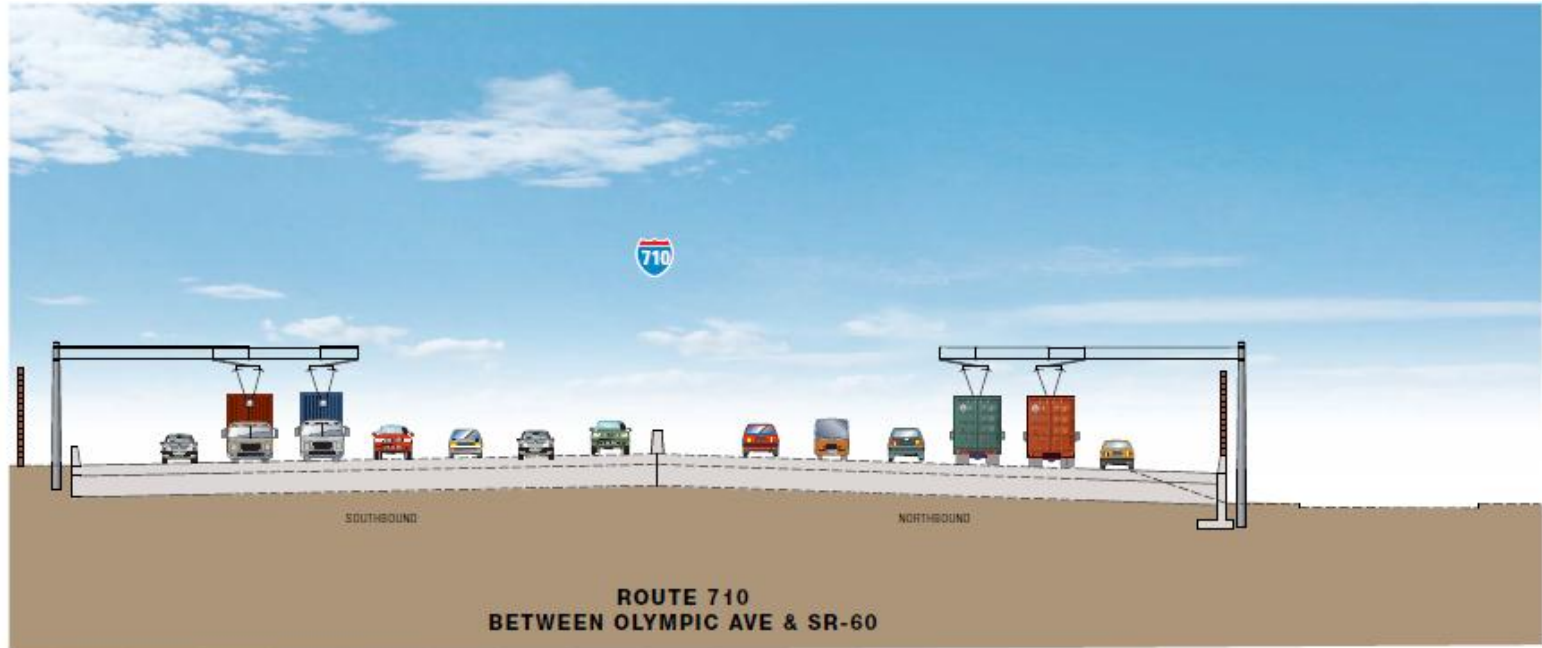


Conceptual Zero Emission Truck Rendering



I-710 Key Elements

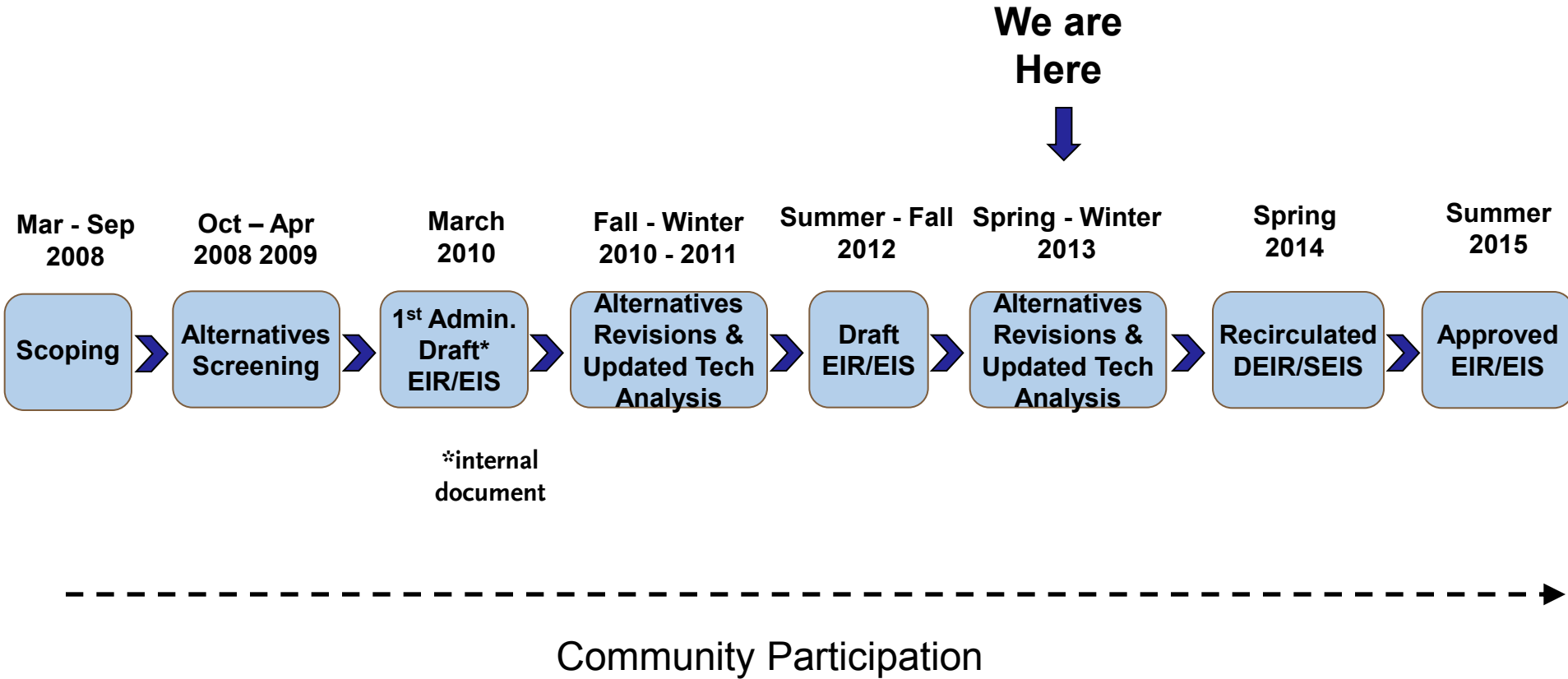
Conceptual Zero Emission Design Option Rendering



SEGMENT 7
ALTERNATIVE 6 B/C
TYPICAL CROSS SECTION

- Public Comment Period
- Overview of Comments Received
- What has changed since the Draft EIR/EIS was circulated
- Next Steps

I-710 Schedule



Questions