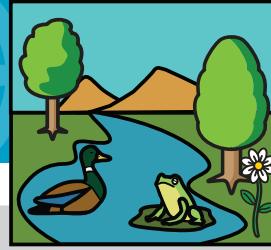


METRO COMMUNITY RIDES

# BIKE MONTH: Sunday Funday Along the LA River

**RIDE LEVEL: EASY**

Round trip 5.7 miles – 2.5 hours including stops. Leisurely pace. Please use caution, safety equipment and proper traffic safety skills when riding a bicycle.

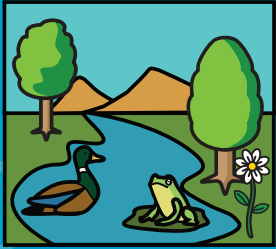


**1** START/END  
Lincoln/Cypress Station

*This map is for planning purposes only, road conditions can change. LACBC and Metro are not responsible for personal usage of this map. Map is not to scale and subject to change.*

## METRO COMMUNITY RIDES

### BIKE MONTH: Sunday Funday Along the LA River



#### RIDE LEVEL: EASY

Leisurely ride with no or few hills. Good for beginners and large groups.



#### 1 Metro Gold Line Lincoln/Cypress Station

370 W Av 26  
Los Angeles, CA 90031  
[metro.net](http://metro.net)

#### 2 Lewis MacAdams Riverfront Park

2999 Rosana St  
Los Angeles, CA 90039  
[mrca.ca.gov](http://mrca.ca.gov)

#### 3 Elysian Valley Gateway Park

2914 Knox Av  
Los Angeles, CA 90039  
[mrca.ca.gov](http://mrca.ca.gov)

#### 4 Elysian Valley Community Garden

1816 Blake Av  
Los Angeles, CA 90039  
[facebook.com/richstreetgarden](https://facebook.com/richstreetgarden)

#### 5 Jardin del Rio Community Garden

2363 Riverdale Av  
Los Angeles, CA 90031

## About Ride Levels

Bike rides are for everyone. These rides are coded for the comfort or accessibility level best suited to your needs.

#### RIDE LEVEL: EASY

Leisurely ride with no or few hills. Good for beginners and large groups.

#### RIDE LEVEL: FAMILY FRIENDLY

Mostly separated from auto traffic. No or few hills and comfortable for the whole family.

#### RIDE LEVEL: BIKE SHARE

In the service area of Metro Bike Share or a municipal bike share system.

#### RIDE LEVEL: ADVENTURE

More challenging ride with possible faster pace, more mixed traffic or hill climbs.

## STAY IN TOUCH!

### Metro

- 213.922.2218
- [metro.net/gobike](http://metro.net/gobike)
- [@bikemetro](https://twitter.com/bikemetro)
- [facebook.com/bikemetro](https://facebook.com/bikemetro)

### LACBC

- 213.629.2142
- [info@la-bike.org](mailto:info@la-bike.org)
- [la-bike.org/](http://la-bike.org/)
- [@LACBC](https://twitter.com/LACBC)
- [facebook.com/LosAngelesCountyBicycleCoalition/](https://facebook.com/LosAngelesCountyBicycleCoalition/)
- [@lacbc](https://www.instagram.com/lacbc)

