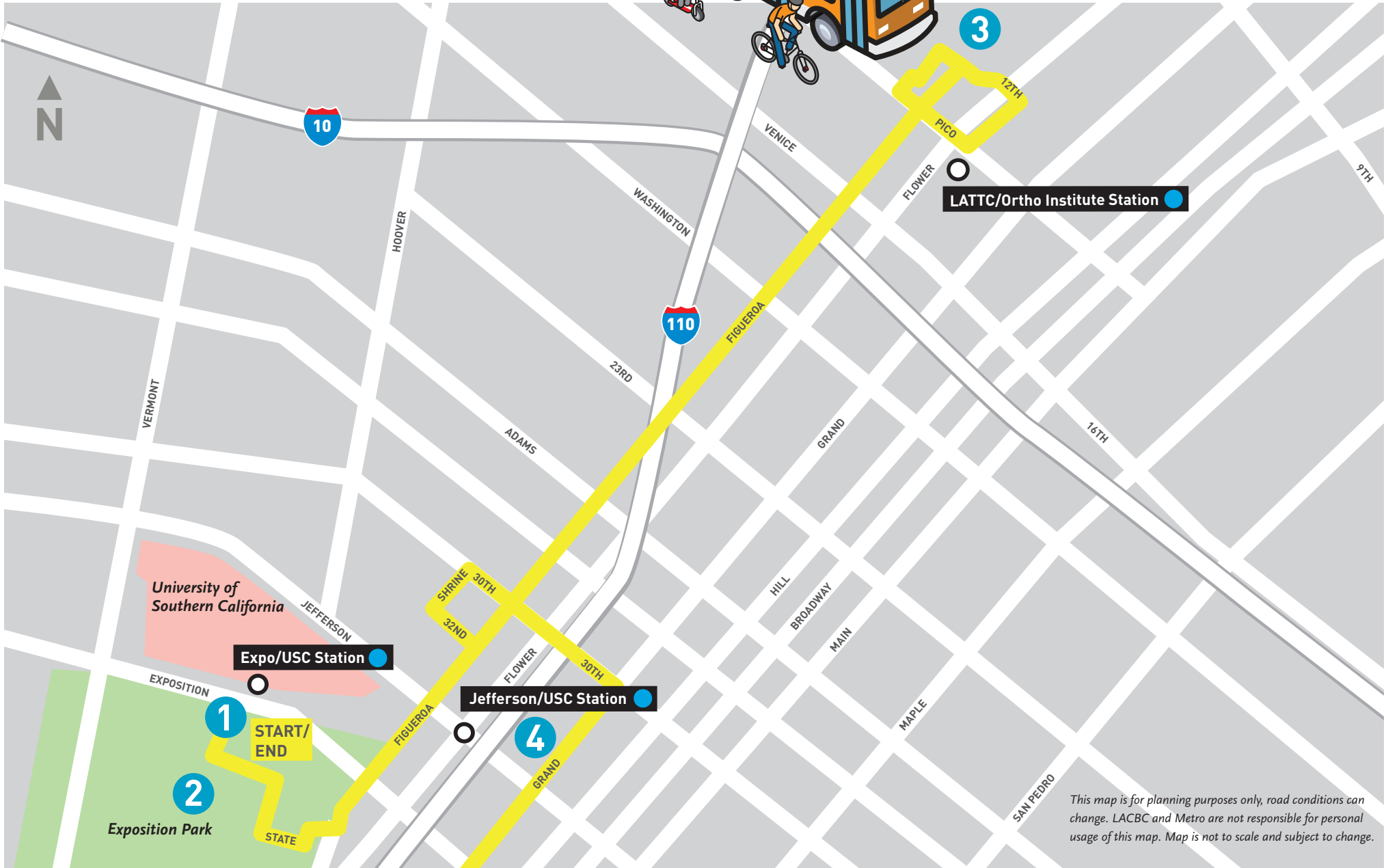


# BEST Ride: My Fig-Tastic Tour

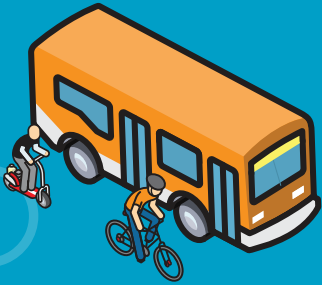
**RIDE LEVEL: EASY**

Round trip 5.7 miles – 2.5 hours including stops. Leisurely pace. Please use caution, safety equipment and proper traffic safety skills when riding a bicycle.



*This map is for planning purposes only, road conditions can change. LACBC and Metro are not responsible for personal usage of this map. Map is not to scale and subject to change.*

**BEST Ride: My Fig-tastic Tour**



**RIDE LEVEL: EASY**

Leisurely ride with no or few hills. Good for beginners and large groups.



- 1 Metro Expo Line Expo/USC Station**  
701 Exposition Bl  
Los Angeles, CA 90037  
[metro.net](http://metro.net)
- 2 Exposition Park Rose Garden**  
701 State Dr  
Los Angeles, CA 90037  
[laparks.org](http://laparks.org)
- 3 Staples Center/LA Live**  
1215 Bates Av  
Los Angeles, CA 90015  
[lalive.com](http://lalive.com)
- 4 Mercado La Paloma**  
3655 S. Grand Av  
Los Angeles, CA 90007  
[mercadolapaloma.com](http://mercadolapaloma.com)

**About Ride Levels**

Bike rides are for everyone. These rides are coded for the comfort or accessibility level best suited to your needs.

**RIDE LEVEL: EASY**

Leisurely ride with no or few hills. Good for beginners and large groups.

**RIDE LEVEL: FAMILY FRIENDLY**

Mostly separated from auto traffic. No or few hills and comfortable for the whole family.

**RIDE LEVEL: BIKE SHARE**

In the service area of Metro Bike Share or a municipal bike share system.

**RIDE LEVEL: ADVENTURE**

More challenging ride with possible faster pace, more mixed traffic or hill climbs.



**STAY IN TOUCH!**

- Metro**
- 213.922.2218
- [metro.net/gobike](http://metro.net/gobike)
- @bikemetro
- [facebook.com/bikemetro](http://facebook.com/bikemetro)

**LACBC**

- 213.629.2142
- [info@la-bike.org](mailto:info@la-bike.org)
- [la-bike.org/](http://la-bike.org/)
- @LACBC
- [facebook.com/LosAngelesCountyBicycleCoalition/](http://facebook.com/LosAngelesCountyBicycleCoalition/)
- @lacbc

