

Purple Line Extension

Sycamore Square Neighborhood Association—September 10, 2017



La Brea Station

Center Opening Utilization Thru February 2020

The center opening is a large underground access shaft located behind concrete barriers at Wilshire Bl/Sycamore Av.

The design-builder, STS needs to continue to utilize the center opening thru February 2020 to accomplish the following work associated with Wilshire/La Brea station construction:

- Concrete for underground station structure
- Removal of excavation support system
- Tunneling equipment and support
- Mechanical equipment installation

Why is a center opening work zone in its current configuration with concrete barriers, stationary fencing, sound blankets and banners advantageous to the community?



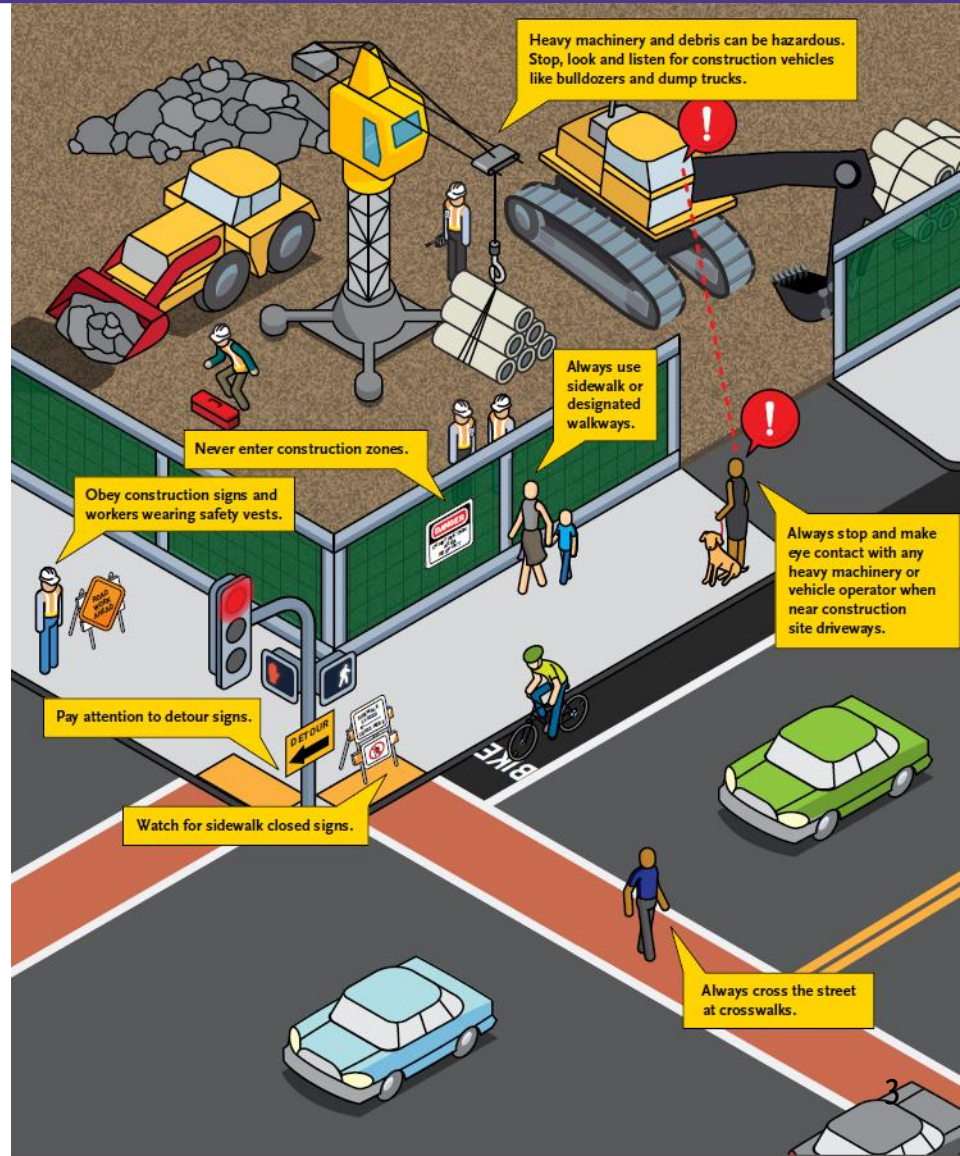
Current center opening work zone at Wilshire Bl/Sycamore Av

Wilshire/La Brea Station

Center Opening Benefits - Safety

The current center opening configuration is the safest method to accomplish the work for both workers and the public

- Positive protection of concrete barriers and fencing is safer for workers and the traveling public
- Static traffic pattern creates less confusion for motorists than constantly changing lane closures, reducing the risk of traffic accidents
- Current configuration minimizes daily traffic “sign and cone” closures
- Provides the safest method for workers to access the east end of the station and to transport materials in and out of the station



Wilshire/La Brea Station

Center Opening Benefits - Traffic



- The center opening is a static traffic pattern that minimizes the need for sign and cone closures
 - Sign and cone closures may change daily depending on the location of access and work activity
- Consistent for clients and patrons of local businesses
 - Traffic control signage for the work area on Wilshire Bl remains consistent
- If the current concrete barrier setup is removed, the design-builder will most likely use curb lane closures and side street closures to gain access to the deck panels
 - These lane closure may be more disruptive to local business and pedestrians
- Removal of the concrete barriers does not increase the number of lanes on Wilshire Bl during off-peak hours
 - The center opening decentralizes hauling from the La Brea staging yards, which reduces hauling traffic on La Brea Bl

Wilshire/La Brea Station

Center Opening Benefits – Work Zone Configuration

Maintains consistently robust noise mitigation

- 12.5-foot noise barriers are installed at the center opening
- This level of noise mitigation is unable to be installed during temporary lane reductions due to space and vehicular visibility limitations

Allows for more noisy work to occur during the daytime hours

- Less work is scheduled during evening hours due to peak-hour traffic restrictions

More contained work area

- The center opening is contained with concrete barriers, sound wall fencing, and business specific banners facing Wilshire Bl
- Removal of the center opening work area would create daily work zones
 - Daily work zones would have greater visibility of equipment, exposure to the public, and would not allow for business specific banners and noise mitigation

Project-Wide Noise Mitigation Requirements

- Must comply with City of Los Angeles noise requirements
- Noise control signage must be installed
- Low-impact back up alarms for night work
- Acoustical insulation

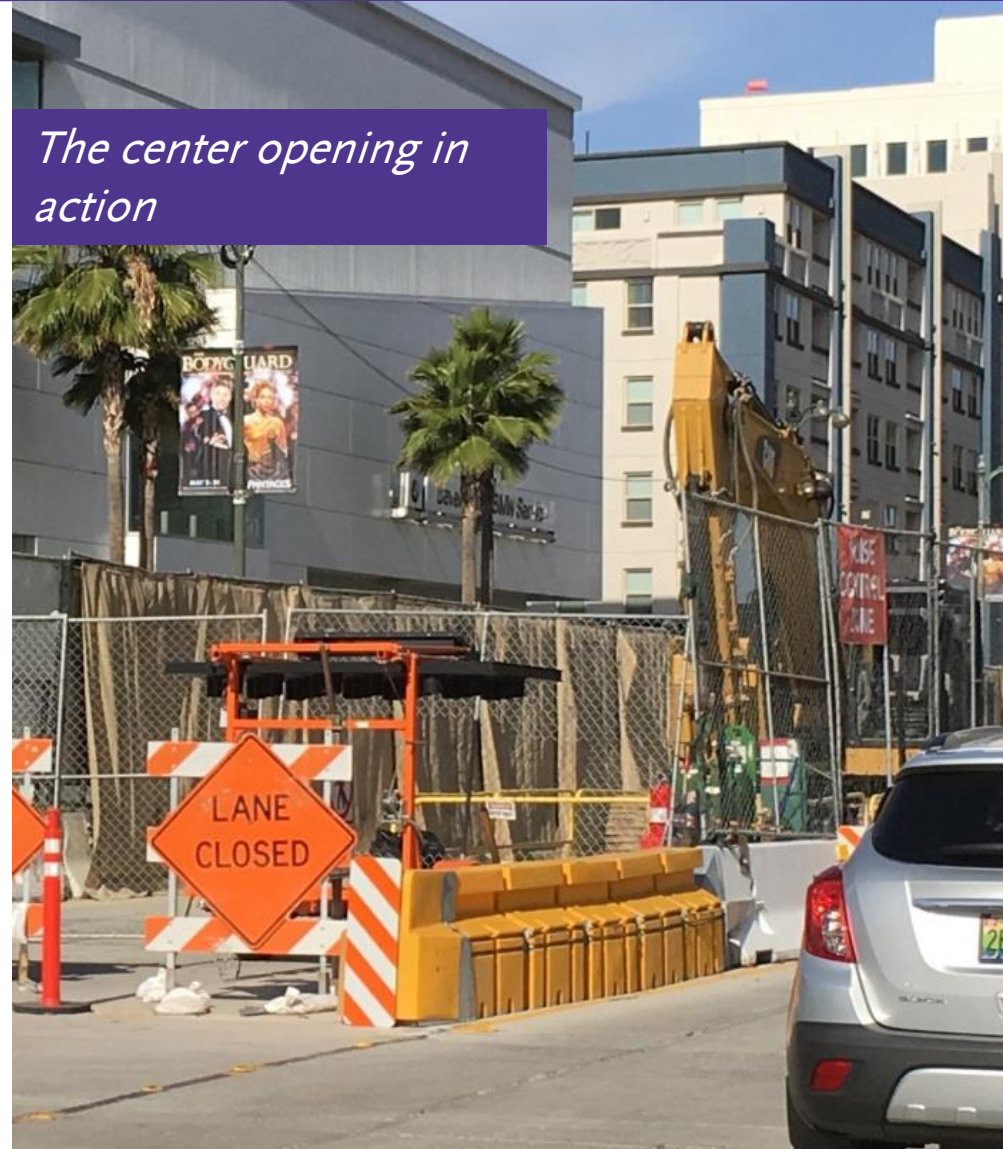
Metro 5 Step Noise Plan

- Training for all personnel
- Scheduling to avoid nighttime hours to best of ability
- Noise control measures are implemented
- Noise monitoring
- Response from 24/7 hotline

Wilshire/La Brea Station

Center Opening – Other Considerations

- Additional work in the area, such as jet grouting near Wilshire Bl/Highland Av, will have been completed
- The Mansfield Development at Wilshire/Mansfield is anticipated to be complete in Q1/Q2 of 2018
- As the work advances, the project team will evaluate the potential to adjust the work zone at the street level
- Less risk of delay for the construction schedule
- Appendage structures at La Brea Bl, Sycamore Av and Orange Av still need to be constructed



The center opening in action

Stay in Touch



213.922.6934



purplelineext@metro.net



metro.net/purplelineext



@purplelineext



facebook.com/purplelineext



Metro

