

COMMUNITY UPDATE

The mission of DTSC is to protect California's people and environment from harmful effects of toxic substances by restoring contaminated resources, enforcing hazardous waste laws, reducing hazardous waste generation, and encouraging the manufacture of chemically safer products.

BUTTERFIELD PROPERTY

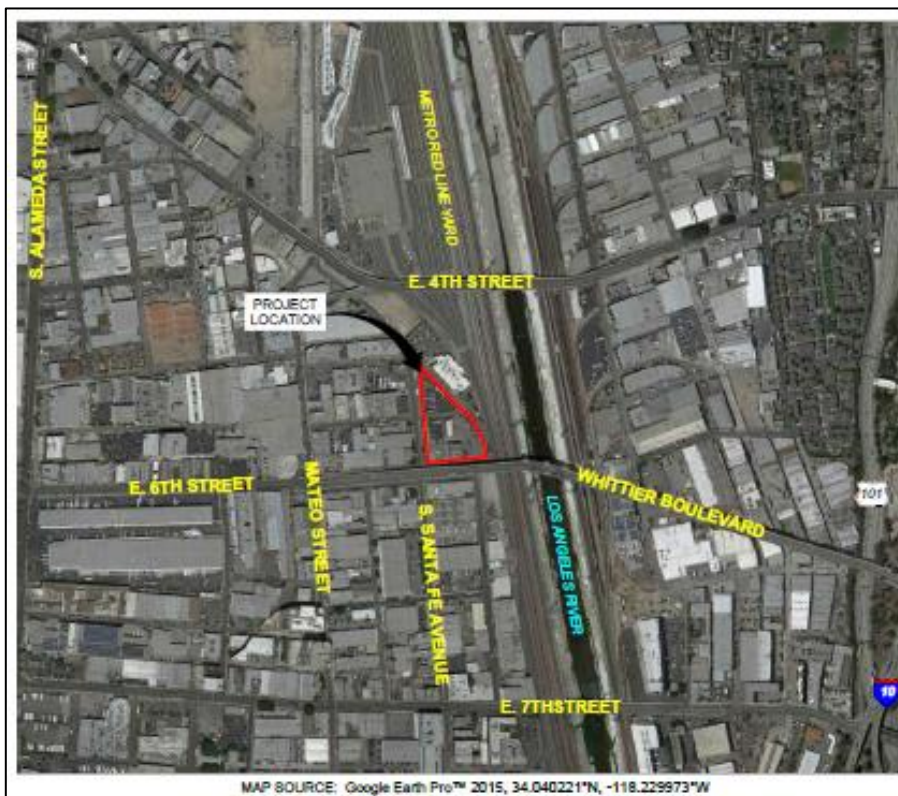
590 South Santa Fe Avenue, Los Angeles, CA

PUBLIC COMMENT PERIOD September 7 – October 7, 2015

The Department of Toxic Substances Control (DTSC) invites you to review and comment on the draft Removal Action Workplan (RAW) for the Butterfield Property (Site) from September 7 through October 7.

Site location and history

The Site is located at 590 South Santa Fe Avenue in Los Angeles, California. The property is approximately 2.9 acres in size and located in an industrial area of downtown Los Angeles. The triangular-shaped Site is almost entirely covered by asphalt-paved surfaces. The Site was used since the early 1900s for a variety of manufacturing purposes.



PUBLIC COMMENT



30 Day Public Comment Period
Sept. 7—Oct. 7, 2015

DTSC encourages you to review and comment on the draft RAW and CEQA documents.

Please submit comments by 5:00pm on October 7, 2015 to:

Jessy Fierro
DTSC Project Manager
818-717-6563
Jessy.Fierro@dtsc.ca.gov

For more information about this cleanup, visit DTSC's online Envirostor website at:

http://www.envirostor.dtsc.ca.gov/public/profile_report.asp?global_id=19281223



www.calpa.ca.gov



www.dtsc.ca.gov



www.ca.gov

Why is cleanup necessary?

The property will be a maintenance yard for the Los Angeles County Metropolitan Transportation Authority (LACMTA) Purple Line Extension/Westside Subway Project. There are chemicals in the soil, soil vapors and groundwater that need to be cleaned up.

What is a draft Removal Action Workplan (RAW)?

A draft RAW is a plan that describes results from tests and identifies ways to cleanup the contamination.

How does the draft RAW propose to cleanup the Site?

The draft RAW recommends:

1. Excavating three areas of shallow soil
2. Treating deeper soil on site
3. Treating groundwater on site

California Environmental Quality Act (CEQA)

In accordance with CEQA, DTSC has reviewed the Environmental Impact Report (EIR) prepared by MTA for the MTA Purple Line Extension/Westside Subway Project (PLE) to ensure that CEQA requirements have been satisfied for the Butterfield Site. The Butterfield Site will be developed as a maintenance yard for the PLE. The EIR included excavation activities at the site associated with the RAW and thereby evaluated environmental impact(s) from the Site. The EIR can be found on MTA's website: <http://www.metro.net/projects/westside/final-eis-eir/>

Where to Find Project Documents:

Arts District Los Angeles Office
627 S. Central Ave,
Los Angeles, CA. 90021

DTSC Chatsworth Regional Office
9211 Oakdale Avenue
Chatsworth, CA 91311

Please call (818) 717-6621 for an appointment

To view project related to the environmental investigation and proposed site cleanup site, go to DTSC's Envirostor website:

http://www.envirostor.dtsc.ca.gov/public/profile_report.asp?global_id=19281223

Next Steps

After the public comment period ends, DTSC will review and evaluate any comments received. Once the public comments have been considered, DTSC will issue a Response to Comments (RTC) document. The RTC will be mailed to individuals who submitted a written comment that included an e-mail or postal mailing address. DTSC will then make a final decision on the draft RAW.

Who to Contact at DTSC for More Information:

Jessy Fierro
DTSC Project Manager
9211 Oakdale Avenue
Chatsworth, CA 91311
Jessy.Fierro@dtsc.ca.gov
Office: (818) 717-6563
Fax: (818) 717-6515

Mary Sue Maurer
DTSC Public Participation
9211 Oakdale Avenue
Chatsworth, CA 91311
Mary.Maurer@dtsc.ca.gov
Office: (818) 717-6566
Fax: (818) 717-6575

All of DTSC's public participation documents can be made into an alternate format (i.e. Braille, large print, etc.) in another language as appropriate, in accordance with state and federal law.

