

[View this email online](#)



The Race is On for the Purple Line Extension Tunnel Boring Machines!

Technicians continue to assemble the two tunnel boring machines (TBMs) inside the future Wilshire/La Brea Station, with the latest schedule calling for them to start boring at the end of September.

All the major components of Elsie and Soyeon have been delivered to the station. Work now concentrates on testing the components and attaching the dozens of cables and tubes that will bring the 450-foot long machines to life.

The first TBM, Soyeon, is anticipated to reach the Wilshire/Western Station in May 2019. Elsie will follow her sister by approximately 150 feet.

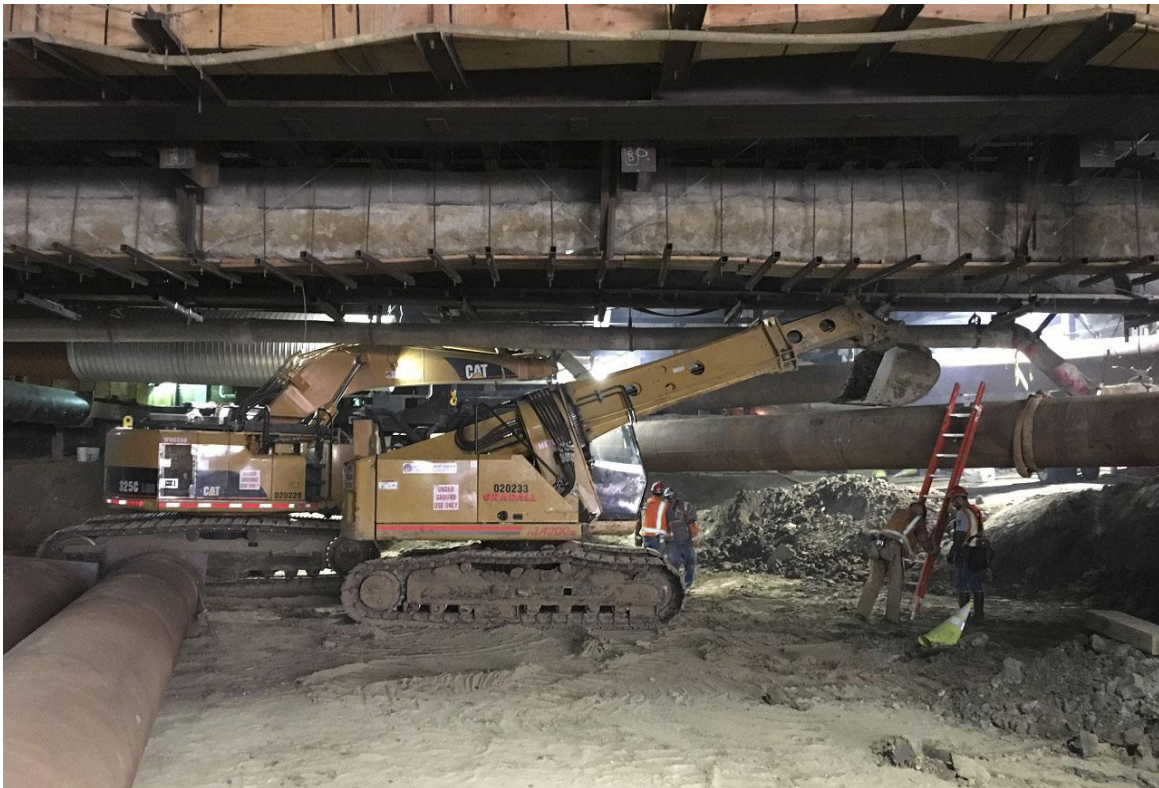
As the machines commonly travel at four feet per minute, neighbors of Wilshire will not know that they are working under the grand boulevard.



[To learn more about the Purple Line Extension TBMs, click here.](#)

Purple Line Extension Construction in Beverly Hills

Excavation for the Wilshire/La Cienega Station is approximately 20 feet below the surface of Wilshire Bl. Station excavation will continue into the Fall and reach a final depth of approximately 60 feet.



Meanwhile, jet grouting activities will be wrapping up west of La Cienega Bl this month. The street will be fully restored within the first week of October. Locals will also appreciate the restoration of parking meters on Wilshire Bl between La Cienega and Willaman Dr when the work zone is removed in the area.

Over at the future Wilshire/Rodeo Station, advance utility relocation continues on the north side of Wilshire Bl. The completion of advance utility relocation is scheduled for the end of September.

In observance of the High Holidays, there will be no construction activities for the Wilshire/La Cienega or Wilshire/Rodeo Stations on September 9 and 10 and September 18 and 19.

Century City/Constellation Station Work Advances

Advance utility relocation continues primarily on Constellation Bl within the intersection and west of Avenue of the Stars. The Los Angeles Department of Water and Power (LADWP) will continue to work on Constellation Bl from west to east on Avenue of the Stars through 2019.

The full closure of Constellation Bl at Century Park East in support of construction for the Tunnel Boring Machine Launch Box is anticipated to begin on Friday night, September 21 and will be fully in place by Monday morning, September 24.

[Click here, for access information during the closure.](#)



Advance Utility Relocation for Purple Line Extension Continues into Fall Semester

Metro contractors continue excavation work to relocate underground water, power and telecommunications equipment along Wilshire Bl between Glendon Av and Midvale Av. Locating and moving underground electric cables, sewer lines and other utility equipment is a necessary to prepare for actual tunnel excavation and station construction. Metro contractors are performing work at night, between 9pm and 6am.

For the next week or two, work related to the Purple Line Extension will require a brief period of work during daytime hours. The work will be done at the curb lanes of northbound and southbound Midvale Av and Wilshire Bl.

While crews are working in or near the streets, some traffic lanes will be temporarily reduced or access might be temporarily restricted. However, at least one traffic lane in both directions of Wilshire Bl will remain open at all times.

As the Fall semester starts for UCLA students later this month, please plan for travel delays in Westwood. Take note of the posted signs near construction zones for detours and alternate routes.

[For more information on advance utility relocation in Westwood during the month of September, click here.](#)

Eat Shop Play Giveaway in Century City

Mention “Metro” at any of the participating Century City businesses below from September 17 through 20, 2018 and receive a free Metro TAP card

loaded with one-way fare.

- [Cuvee](#)
- [The Shave Place](#)
- [Piknic](#)
- [Habanero Grill](#)
- [Cleaners Depot](#)
- [The Annenberg Space for Photography](#)

Also join #EatShopPlay #CenturyCity for some Fun in the Park on September 20, 2018 from 11:30am to 1:30pm for games, giveaways and prizes. The booth will be located within Century Park between the two towers.

Eat Shop Play Local Events



Share your Tar Pits experience!

Uncovering the future of the La Brea Tar Pits starts with you. Your stories, comments and suggestions will help us discover ways we can evolve the experience at the La Brea Tar Pits, Museum and Hancock Park.

Click here to participate: tarpits.org/listens.



Never been to [LACMA](#)? You're invited to First Time Friday's! The museum—with dozens of air-conditioned galleries—is free on Fridays, 3pm to 8 pm, for Los Angeles County residents.

[Click here for more details.](#)

Experience a multimedia performance where we dig into the past to uncover the mysteries of some of the extinct creatures who roamed Ice Age Los



Angeles over 10,000 years ago at [La Brea Tar Pits: Ice Age Encounters](#).

[Click here for event info and tickets.](#)

Metro Headlines

TSA and L.A. Metro partner to provide advanced passenger screening system

[More from The Source >](#)



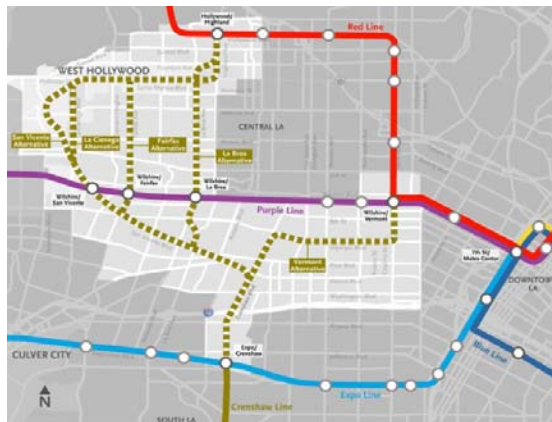
New video: what's happening under Wilshire and Fairfax on the Purple Line Extension

[More from The Source >](#)



Feasibility study looks at possible routes for Crenshaw North Extension

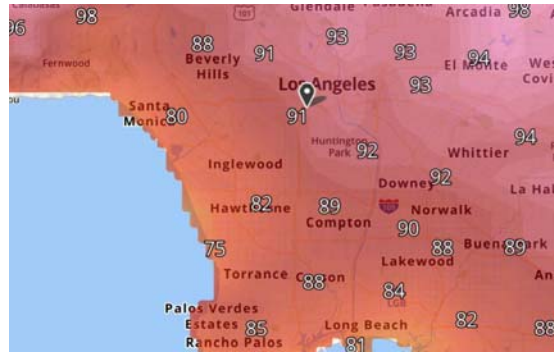
[More from The Source >](#)



How the heat can impact Metro Rail service

[More from The Source >](#)

[More from The Source >](#)



Construction is a dynamic process and information is subject to change without notice. For the latest construction updates visit our [project website](#).



Upcoming Meetings



[Section 3: Pre-Construction Community Meeting](#)

Thursday, September 13 | 6:30pm - 8pm | Westwood United Methodist Church

[Section 1 & 2: La Cienega and Rodeo Station Update Meeting](#)

Wednesday, October 3 | 6:30pm - 8pm | 2nd Floor Municipal Gallery at Beverly Hills City Hall

[Section 1: Construction Community Meeting](#)

Thursday, October 18 | 6pm - 7:30pm | LACMA Brown Auditorium

[Section 2: Construction Community Meeting](#)

Thursday, November 13 | 6:30pm - 8pm | Century Park Towers

[Vist Our Webpage >](#)

[Eat Shop Play Local >](#)

[View the Latest Construction Notices >](#)



© **2018 Metro (LACMTA)** One Gateway Plaza, Los Angeles, CA 90012-2952

Bus & Rail Transit Information

323.GO.METRO (323.466.3876)

6:30am - 7pm (Monday - Friday)

8:00am - 4:30pm (Saturday/Sunday)

Your privacy is very important to us. Please take a moment to review our [Privacy Policy](#).