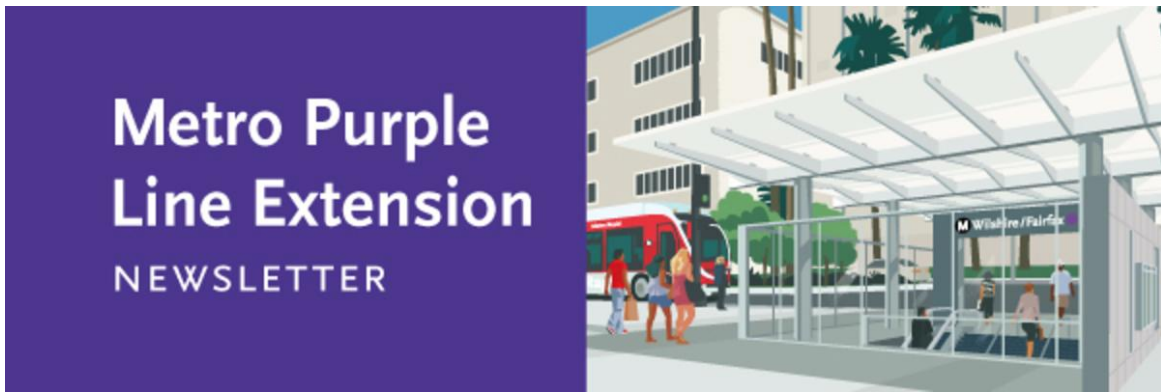


To view this email as a web page, go [here](#).



From where to where?

In early fall, when Soyeon pushes off from the La Brea station grinding east to the Wilshire/Western station, she will begin digging the 3.92-mile-long tunnels to connect the La Cienega, Fairfax, La Brea and Western stations (her sister Elise will follow a short distance behind).

The twin tunnel boring machines (TBMs) will cut a 21-foot diameter tunnel in each direction. One thing they will not do is cut tunnels that are level—tunnels the same depth below the surface. These tunnels will rise and fall from 35 to 90 feet below the surface of Wilshire Bl.

One reason for this rise and fall is water. Each stretch of the tunnel is built so that it has a single low point where incidental water will collect and be removed. This eliminates the need for water to be collected at multiple points along the tunnel.

Another reason the tunnels rise and fall is because of the soil composition around it. Engineers want the tunnels to travel through the strongest layer of soil, so the TBMs adjust slightly to find the strongest foundation.



A final reason is energy and brake conservation. When the trains leave the future Wilshire/La Brea Station, for example, the tunnel runs deeper, allowing the trains to gather speed going downhill while using little power. When approaching the Wilshire/La Brea station, the tunnel rises, allowing train operators to use the incline to reduce speed without relying only on brakes.

This is not a new concept, but it has proven value.

The tunnels also shift very slightly from north to south as they rise and fall—not that riders will feel the difference.

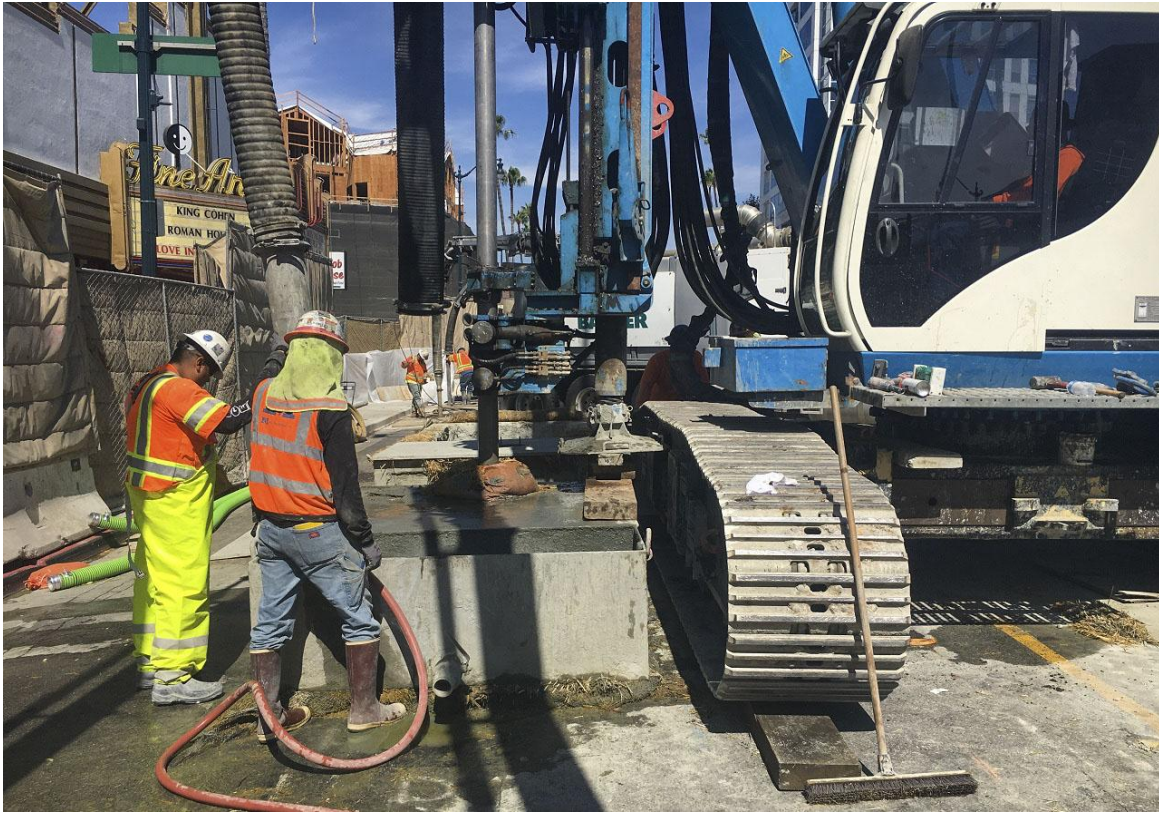
So, if someone asks you how deep the new Purple Line Extension tunnels are, you might first ask, “From where to where?”

[To learn more about the Purple Line TBMs, click here.](#)

Eastbound Closure on Wilshire at Robertson to Support Jet Grouting

In order to support, jet grouting the design-builder will be implementing an eastbound directional closure on Wilshire Bl at Robertson Bl from Saturday, August 4 through Sunday, August 5.

[Click here for detour and local access information.](#)



Additionally, Metro riders will be happy to hear that a new westbound Metro 20 bus stop has been added at Wilshire Bl and Gale Dr.

Quick Update for Wilshire/Rodeo Station

Advanced utility relocation (AUR) work will continue behind k-rail on the south side of Wilshire Blvd. between Crescent Dr. and Reeves Dr.

Preparation for the demolition of the ACE Gallery has begun with scaffolding and pedestrian protection in place to start abatement work.



Century City/Constellation Construction Update

Demolition of the 1940 and 1950 Century Park East properties is expected to be completed by August 8. A sound wall will be installed around the property

to create the staging yard for construction activities.

Meanwhile, oil lines on Constellation Blvd. are being removed to prepare for the closure on Constellation Blvd in September.

[Click here for the latest information on the 15-month closure at Constellation Blvd.](#)

Metro and Veterans Affairs Joint Public Information Session

Metro’s Purple Line Extension (PLE) team partnered with the Department of Veterans Affairs (VA) administrators to provide the Westwood veteran community updates on Section 3 construction. The Town Hall-style meeting was held at the VA West LA Medical Center, where more than 50 attending members of the local veteran community were welcomed.



VA officials informed attendees that the PLE project will support the VA’s goal of building a thriving veteran community, where access to employment and medical services for veterans and VA staff is greatly enhanced.

Metro Community and Construction Relations staff provided an update on the work hours and schedule for the Section 3 advance utility relocation work currently being performed in Westwood. The Metro team also highlighted the proposed Westwood/VA Medical Center station design and amenities. And attendees learned about what Metro is doing to protect the historically significant elements of the VA campus before and during construction.

[Click here to view the presentation online.](#)

Eat Shop Play News

Summer time in Los Angeles is the best time to enjoy fun activities with your friends and family. Check out what the following #EatShopPlay #MiracleMile partners have planned for you!



[Craft and Folk Art Museum](#) will be hosting a new call for submissions for Focus Iran 3: Contemporary Photography and Video, a biennial juried exhibition in collaboration with Farhang Foundation.

[Click here for submission info.](#)



Never been to [LACMA](#)? You're invited to First Time Friday's! The museum—with dozens of air-conditioned galleries—is free on Fridays, 3 to 8 pm, for Los Angeles County residents.

[Click here for more details.](#)



Experience a multimedia performance where we dig into the past to uncover the mysteries of some of the extinct creatures who roamed Ice Age Los Angeles over 10,000 years ago at [La Brea Tar Pits: Ice Age Encounters](#).

[Click here for event info and tickets.](#)

Metro Headlines

Fresh pics: tunneling machine being lowered into Wilshire/La Brea Station for

Purple Line Extension

[More from The Source >](#)



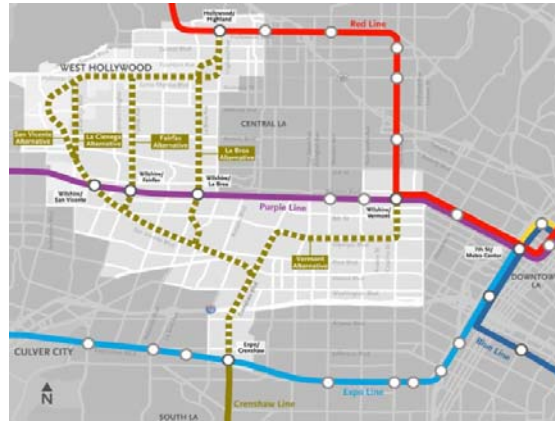
New video: what's happening under Wilshire and Fairfax on the Purple Line Extension

[More from The Source >](#)



Feasibility study looks at possible routes for Crenshaw North Extension

[More from The Source >](#)



How the heat can impact Metro Rail service

[More from The Source >](#)



Construction is a dynamic process and information is subject to change without notice. For the latest construction updates visit our [project website](#).



Upcoming Meetings



[Section 1 & 2: La Cienega and Rodeo Station Update Meeting](#)

Wednesday, August 1 | 6:30pm - 8pm
| 2nd Floor Municipal Gallery at Beverly Hills City Hall



[Section 2: Construction Community Meeting](#)

Thursday, August 23 | 6:30pm - 8pm
| Century Plaza Towers



[Section 3: Pre-Construction Community Meeting](#)

Thursday, September 13 | 6:30pm - 8pm
| Westwood United Methodist Church



[Section 1: Construction Community Meeting](#)

Thursday, October 18 | 6pm - 7:30pm
| LACMA Brown Auditorium

[Vist Our Webpage >](#)

[Eat Shop Play Local >](#)

[View the Latest Construction Notices >](#)



© 2018 Metro (LACMTA) One Gateway Plaza, Los Angeles, CA 90012-2952

Bus & Rail Transit Information
323.GO.METRO (323.466.3876)
6:30am - 7pm (Monday - Friday)
8:00am - 4:30pm (Saturday/Sunday)

Your privacy is very important to us. Please take a moment to review our [Privacy Policy](#).