

Polls Open for Purple Line Extension TBM Art and Naming Contest

The finalists for the Purple Line Extension Tunnel Boring Machine (TBM) Art and Naming Contest have been decided! Help us choose the contest winners, [cast your votes here!](#)

The winning art and name will be displayed during the Purple Line Extension Unveiling Ceremony that is anticipated to happen Spring 2018.

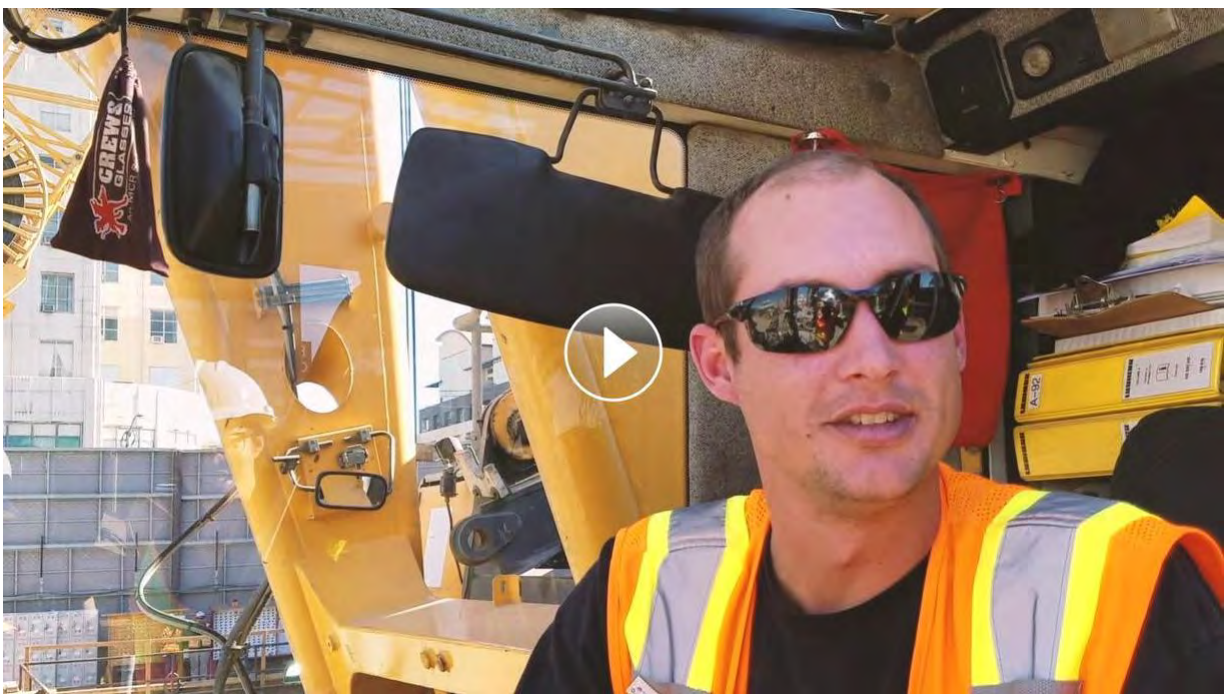
[Subscribe](#) to our email list



What's in Store for 2018 from the Field

Section 1 of the Purple Line Extension project has made a lot of progress this year. Here's a glimpse of some of the people in the field that helped make it happen. Full steam ahead in 2018!

[Subscribe](#) to our email list



Section 1 Construction Updates

Wrapping the Wilshire/La Brea Station in Plastic!

Last month we reported on the construction of the La Brea Station floor, a crucial task for the project because the tunnel boring machines need a resting place before they cut their way east to the Wilshire/Western Station. The “floor” workers are installing, however, is not so much a floor as a four-layer sandwich. This month we will examine Layer Three, the Gas/Water Barrier.

[Subscribe](#) to our email list



Caption: Installing the HDPE layer inside Wilshire/La Brea station

Layer Three consists of heavy plastic sheets that are welded together to form a barrier that lives under the floor and wraps around and inside the station's walls. These sheets are made of high-density polyethylene—better known as HDPE—and they block water and gasses from entering the station.

Besides sealing subway stations, HDPE is used to produce plastic bottles, corrosion-resistant piping and plastic lumber. It was also used to wrap the Red Line and Purple Line stations and tunnels.

The sheets range from a thickness of 50 to 100 millimeters. So, how thick is that? First, let's convert millimeters to microns (one-thousandth of a millimeter).

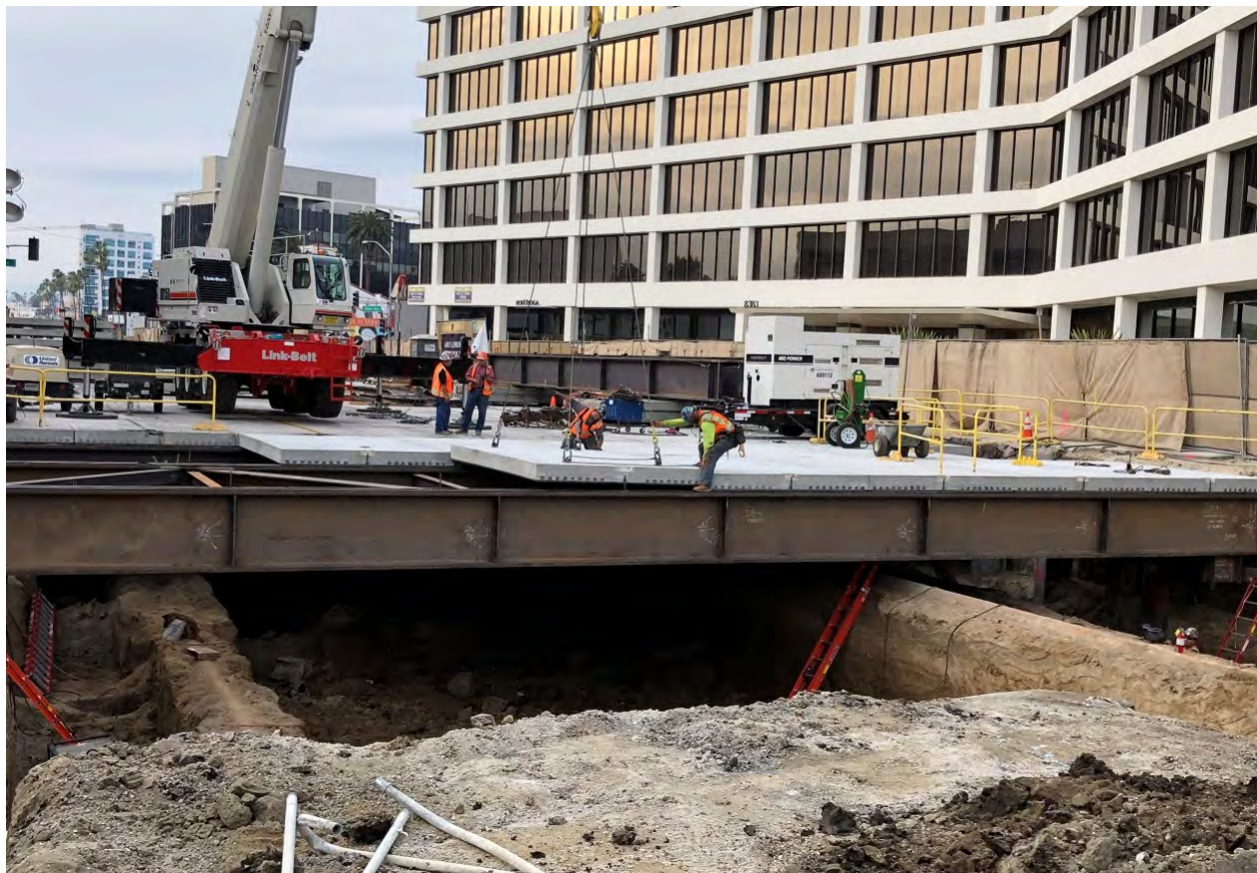


The sheets at the bottom of the La Brea Station are white, so the floor resembles a hockey rink—except that it is covered in plastic rather than ice—and it has no gloves and sticks thrown down by angry players.

Wilshire/La Cienega Weekend Decking Finishes 5 Weeks Ahead of Schedule

At Wilshire/La Cienega the final concrete deck was laid over the first weekend of the New Year. The weekend decking operations, which was anticipated to occur over 15 weekends, finished five weekends earlier than expected. The decking operation included close coordination with the City of Los Angeles and City of Beverly Hills for full weekend street closures to excavate and replace of portions Wilshire and La Cienega Boulevards with a temporary street surface.

[Subscribe](#) to our email list



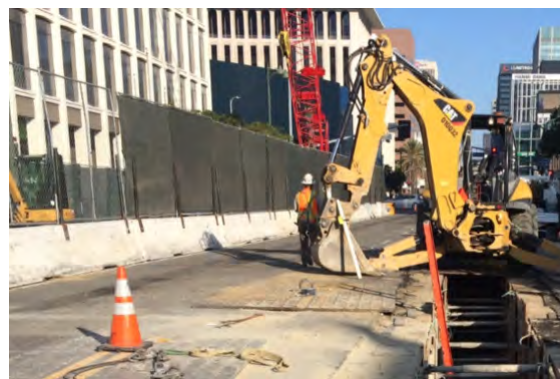
Caption: Laying decking over the last full weekend closure on January 5th - 8th at Wilshire/La Cienega

For more information about the Purple Line Extension construction activities in Beverly Hills for the Wilshire/La Cienega and Wilshire/Rodeo stations, we invite you to attend the monthly update meeting on tonight, Wednesday, January 10th at 6:30pm at Beverly Hills City Hall in the Municipal Gallery on the 2nd floor.

Wilshire/Western Closures

Full closure of Wilshire Bl between Western Av and Manhattan Pl for utility work and pile activities continues through the month of January. Metro Bus Line 20 and Rapid 720 will also be detoured during the closures.

[For more info, click here](#)



[View the Latest Construction Notices](#)

Section 2 & 3 Pre-Construction Updates

Power Relocation in Beverly Hills and Century City in Section 2

During the month of January, Southern California Edison (SCE) will continue to relocate power lines

[Subscribe](#) to our email list

Beverly Hills for the Wilshire/Rodeo station. The design-builder, Tutor Perini/O&G will also continue to conduct geotechnical boring work to collect soil samples mid-month during the hours of 8pm to 6am.

In Century City, the Los Angeles Department of Water and Power (LADWP) will be relocating power lines and AT&T will be relocating telecommunication lines simultaneously this month. The utility relocation work will primarily occur along Constellation Bl between Avenue of the Stars and Century Park East.

[For more details on construction activities, click here.](#)

Advance Utility Relocation Contractor on Board for Section 3

The Advance Utility Relocation (AUR) contractor for Section 3 is on board. The project is expected to start the utility relocation for the Wilshire/Westwood station this March. Work will take place on nights and weekends only for approximately two years.

For a summary of schedule, work hours, and traffic impacts, [click here to view the community presentation.](#)

Eat Shop Play Local

Free Museum Day, January 28!

Dozens of museums will open their doors and invite visitors to attend their museums free of charge on Sunday, January 28, 2018. Stop by and support the following museums on Wilshire.



LACMA



Upcoming Events

Section 1 & 2: La Cienega Station and Rodeo Station Monthly Update Meeting
Wednesday, January 10 | 6:30pm - 8pm | Beverly Hills City Hall - Municipal Gallery

Section 1: Construction Community Meeting
Thursday, January 18 | 6pm - 7:30pm | Petersen Automotive Museum

Section 2: Pre-Construction Community Meeting
Thursday, February 22 | 6:30pm - 8pm | 2029 Century Park East

Section 3: Pre-Construction Community Meeting
Thursday, March 22 | 6:30pm - 8pm | TBD

[Event Details](#)

Stay Connected

The Purple Line Extension is headed west! Follow us on [Facebook](#) and [Twitter](#) for the latest project updates, community news and more.



[Subscribe](#) to our email list



Metro
One Gateway Plaza
Los Angeles, CA 90012-2952

Bus & Rail Transit Information:
323.GO.METRO (323.466.3876)
6:30am - 7pm (Monday - Friday)
8:00am - 4:30pm (Saturday/Sunday)

Share this email:



[Manage](#) your preferences | [Opt out](#) using TrueRemove™
Got this as a forward? [Sign up](#) to receive our future emails.
View this email [online](#) .

Metro (LACMTA) 1 Gateway Plaza
Los Angeles, CA | 90012 US

This email was sent to .
To continue receiving our emails, add us to your address book.

[Subscribe](#) to our email list