

Construction Notice

ATTENTION METRO PATRONS

As part of the Metro Orange Line Extension Project, the Contractor will demolish a portion of the Canoga Station Park and Ride lot to allow for the construction of the new Canoga Station platforms. To accommodate this work the Contractor will close the Vanowen entrance to the Canoga Station through summer 2012.

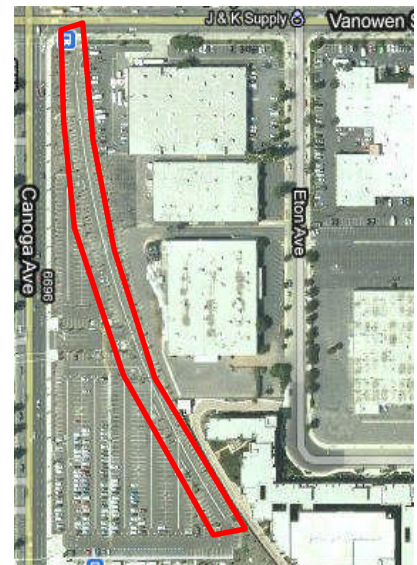
What: Parking lot demolition

When: On Friday, April 29, 2011 the driveway on Vanowen for the Canoga Station will be closed. Starting Monday, May 9, 2011, the Contractor will demolish a portion of the Canoga Station Park and Ride lot. The anticipated work hours are from 7:00 a.m., to 3:30 p.m., weather permitting.

Where: Canoga Station Park and Ride

What to expect:

- Please use the entrance on Canoga Avenue to access the Canoga Station park-and-ride.
- Access to pedestrians will be maintained outside of the construction zone.
- Access to emergency responders will be maintained.



To request further information through an assistive listening device, please call 1.800.252.9040.

Remember to always be careful when driving or walking through or near a construction area.

Thank you for your patience and cooperation.



For more information, call the Community Relations Construction Impact Team at 213.922.3668 or email us at molextension@metro.net.

Metro
One Gateway Plaza, MS 99-17-11
Los Angeles, CA 90012-2952