

Metro is making connections at LAX.

AIRPORT METRO CONNECTOR
96TH STREET TRANSIT STATION



Metro®

Make Your LAX Connection

Metro is planning a new transit station that will connect the Los Angeles International Airport (LAX) to the regional rail system.

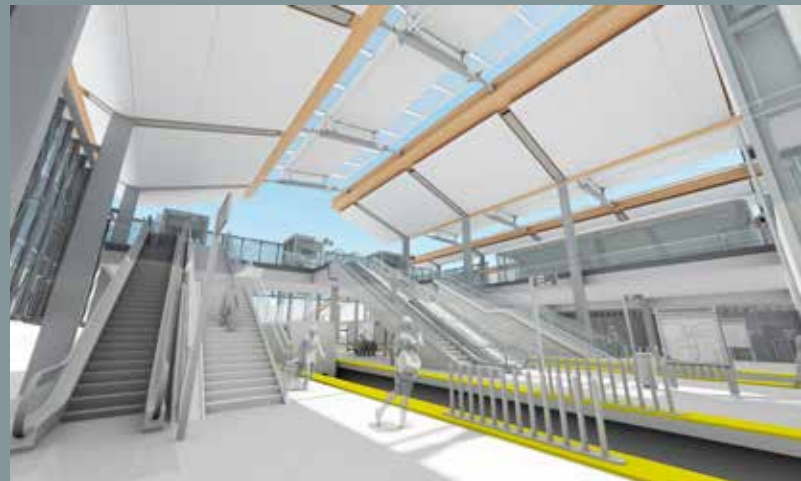
Once complete, the Airport Metro Connector (AMC) 96th Street Transit Station will provide the connection to a future Automated People Mover (APM) to be built and operated by Los Angeles World Airports (LAWA). In June 2014, the Metro Board of Directors approved adding a station to the Crenshaw/LAX Line (currently under construction) at Aviation Bl/96th St that will serve as a transit "gateway" to LAX.

The proposed project includes a new multi-modal transportation center to connect LAX to the regional bus and rail transit system. Project components include:

- > Three at-grade LRT platforms to be served by the Crenshaw/LAX Line and a service extension of the Metro Green Line
- > Bus plaza and terminal facility for Metro and municipal buses
- > Bicycle hub with secured parking
- > Pedestrian plaza
- > Passenger vehicle pick-up and drop-off area
- > Metro transit center/terminal building ("Metro Hub") that connects passengers between the various modes of transportation



Metro Hub: Mezzanine Level



LRT Platforms



Project Location



Metro will continue coordinating with LAWA and area stakeholders during the design of the station.

Improving the connection between LAX and Metro's regional rail system is a key priority. Metro has completed the formal environmental review for the new AMC Transit Station (near Aviation Bl/96th St) and continues to coordinate with LAWA on the connection to the APM. Throughout the development of the AMC Transit Station, there will be opportunities for you to provide your comments, and we encourage your feedback.

Help us plan an AMC Transit Station that:

- > Offers a quick, convenient option to connect to the airport using mass transit
- > Connects to the larger regional transportation network
- > Provides a world-class passenger experience

The AMC Transit Station will serve as the new "gateway" to LAX for transit riders. Stay connected with the project by visiting the project website and Facebook page.



Bus Plaza

Contact Us/*Contáctenos*

Please use the following contact tools to access more project information, ask a question or provide comments.



Cory Zelmer
Metro
One Gateway Plaza, M/S 99-22-52
Los Angeles, CA 90012



laxconnector@metro.net



213.922.4484



213.922.6996



metro.net/laxconnector



twitter.com/laxconnector



facebook.com/laxconnector

