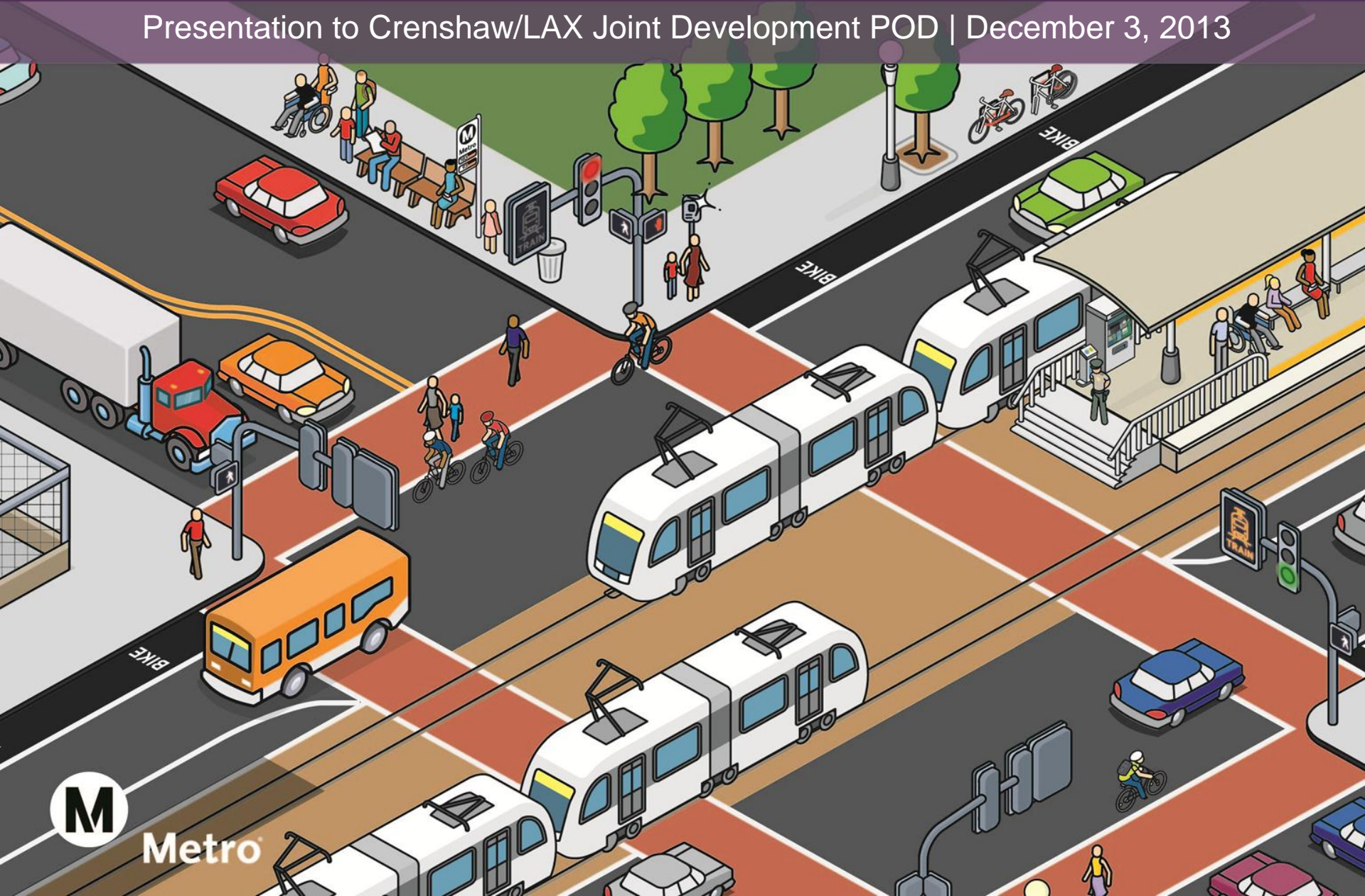


Metro TOD Planning Grant Program

Presentation to Crenshaw/LAX Joint Development POD | December 3, 2013



Metro



- > Program Overview
- > Prior Funding Activity
- > Future Funding Opportunities
- > Crenshaw/LAX Corridor Planning Activities

We're Growing!



- > Measure R – rapid system expansion
- > Opportunity to promote TOD
- > Obstacles to regulatory change
- > TOD Planning Grant Program launched



Metro

Program Objectives

- > Assist local governments to accelerate adoption of TOD regulatory changes
- > Improve transit network and mobility, increase utilization
- > Reduce GHGs through infill development
- > Support and implement sustainable development principles



Cities and the County of Los Angeles with land use regulatory jurisdiction:

- > Within ½ mile of existing, planned or proposed Metro Rail or Bus Rapid Transit stations; and/or
- > Within ½ mile of Metrolink Stations in LA County



Examples of specific regulatory documents:

- > New or amended general plans, specific plans, zoning ordinances, overlay zones
- > Related environmental clearance documents

Areas of study might include:

- > Land use, density/height, parking requirements, bike/pedestrian access, public realm improvements



Funding Awarded to Date

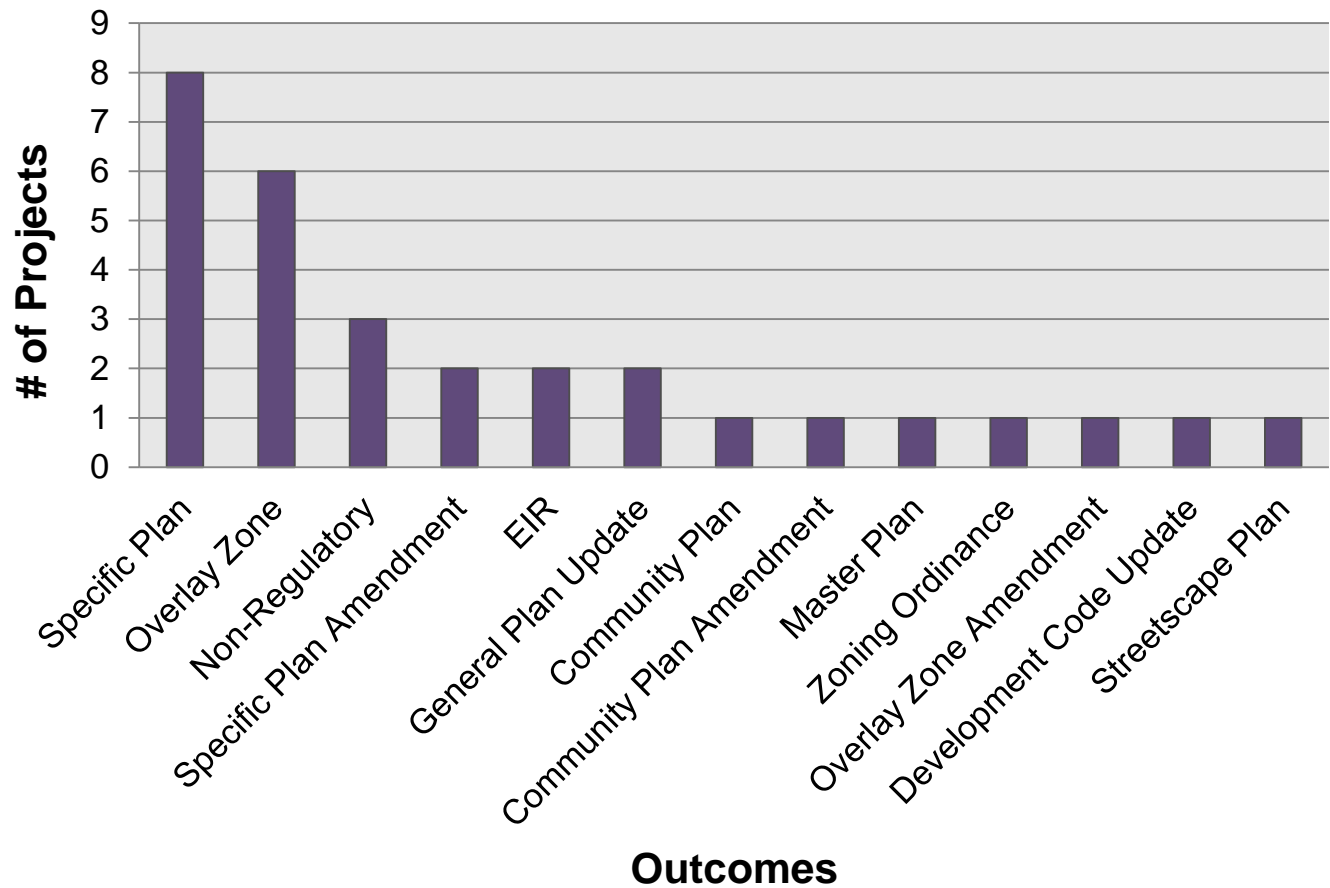
Three rounds, 22 projects, \$15.2 million awarded

- > Round 1 – \$4.8 million (Dec 2011)
- > Round 2 – \$1.0 million (June 2012)
- > Round 3 – \$9.4 million (Feb 2013)

Funded Activities

Program Outcomes

(Total # of Awards: 22)

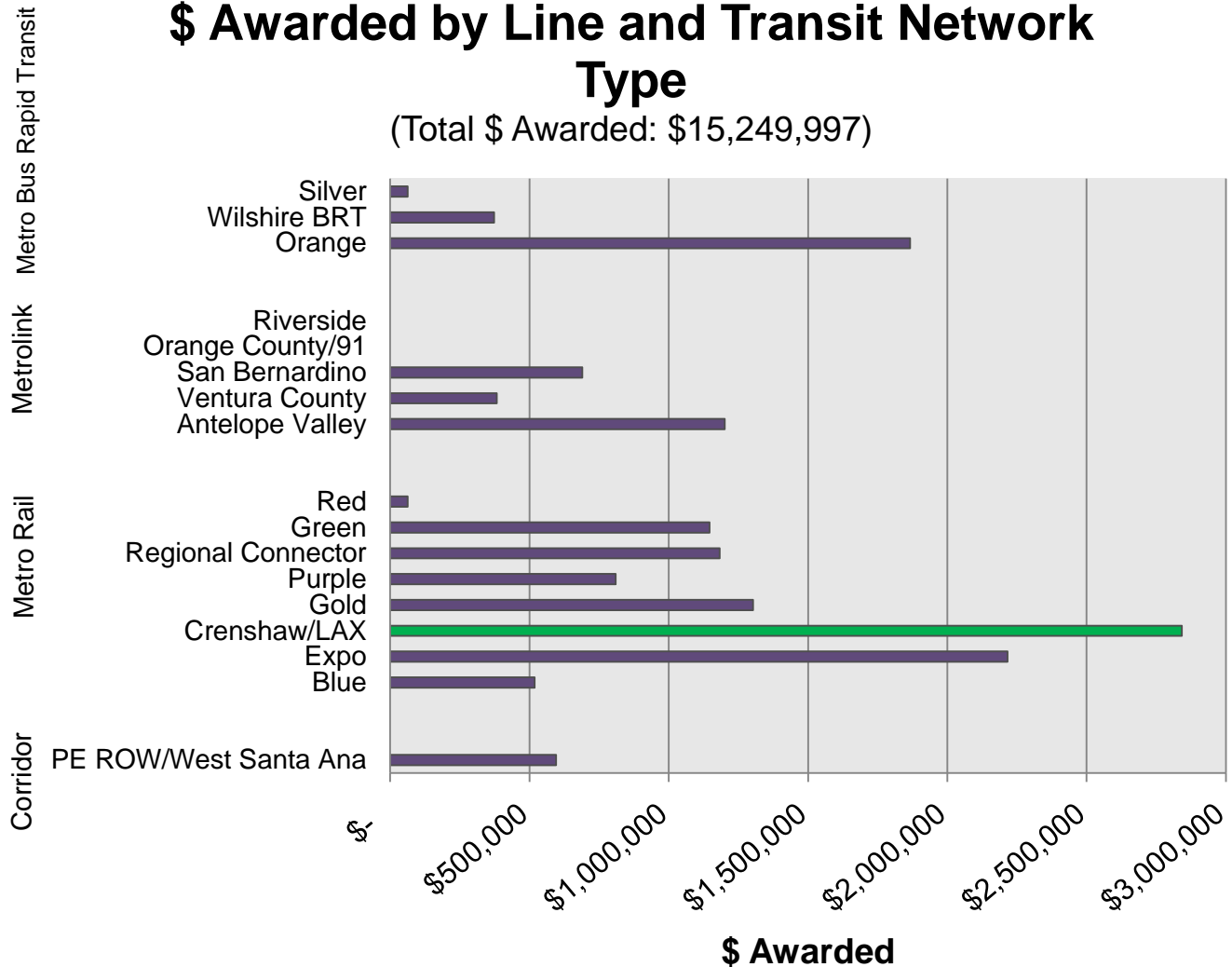


Metro

Funding Distribution

\$ Awarded by Line and Transit Network Type

(Total \$ Awarded: \$15,249,997)



Metro

- > Jan 2014 – Metro Board to consider Recommendation for Round 4

If approved:

- > Spring 2014 – release call for applications
- > Summer 2014 – applications due
- > Fall 2014 – awards announced



Questions/Discussion



CONTACT INFO:
Nick Saponara
Transportation Planning Manager
SaponaraN@metro.net | 213.922.4313

