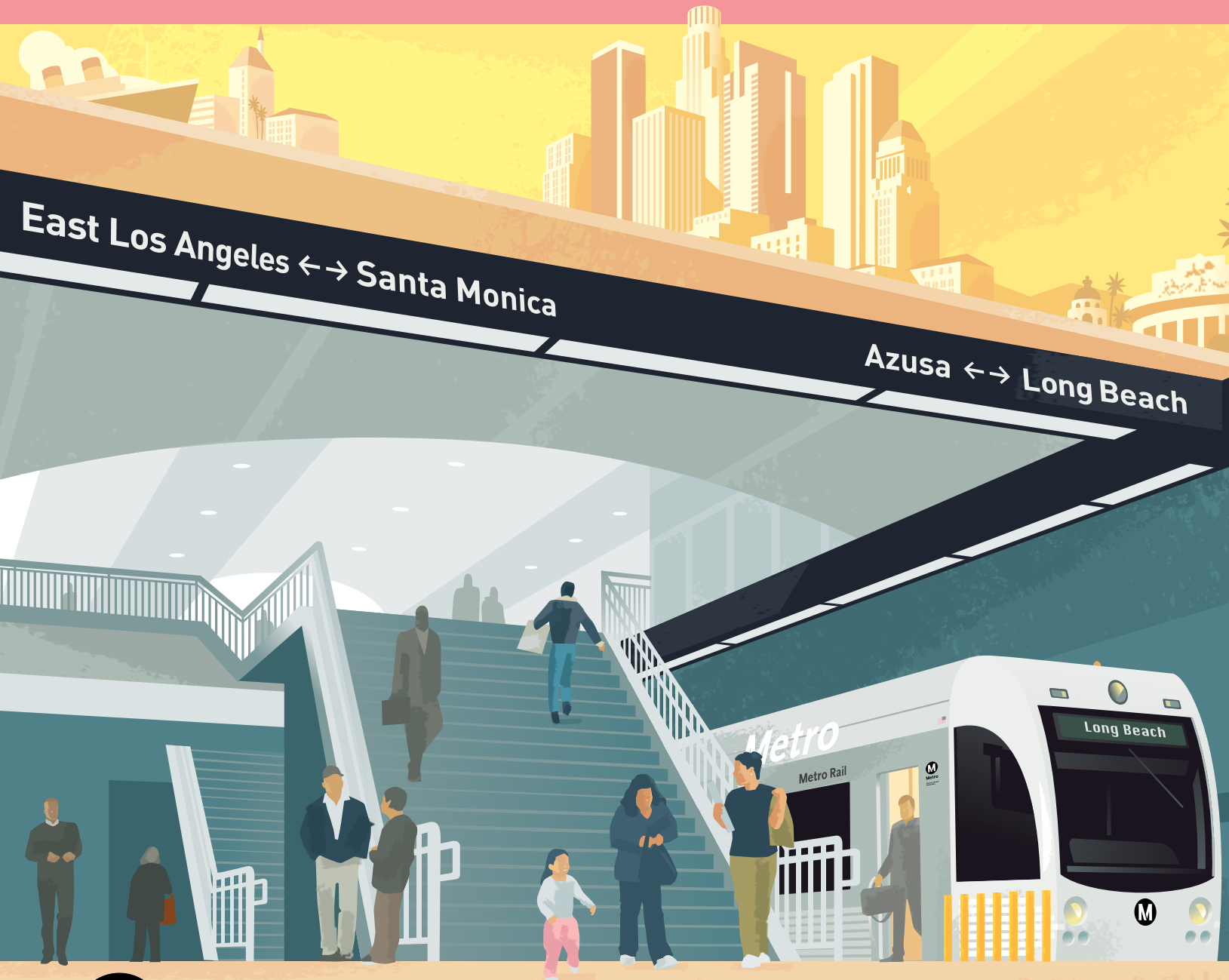


Flower Street Decking 4th to 5th Street

REGIONAL CONNECTOR TRANSIT PROJECT

FALL 2016



Metro[®]

Flower Street Decking: What You Need to Know

WHAT IS DECKING?

The Regional Connector Transit Project has been conducting construction work along Flower St, between 3rd St and Wilshire Bl, for the past several months. With much of the advanced utility relocation complete, crews have been hard at work installing piles. The underground piles form the support structure for the excavation of the subterranean rail alignment. Decking is a construction process that entails excavating the street and replacing it with temporary concrete deck panels.

The deck panels will serve as the temporary roadway while underground work and excavation continues. This will allow traffic to continue to flow, while maintaining access to sidewalks and driveways, as cut-and-cover operations continues underground. In the Financial District of downtown Los Angeles, decking will occur on Flower St stretching from 4th St to just south of 6th St. This work – excavating up to 10 feet of Flower St and placing beams and deck panels across the street, flush at street grade – will occur over the span of 14 weekends starting in October 2016.

STEADY STATE

Once decking is complete, thru-access will be maintained with lane reductions in place on Flower St to accommodate pile installation south of 5th St. As cut-and-cover excavation begins, all construction activities will take place underground and behind barriers. This next phase is known as Steady State.

WHAT TO EXPECT

- > Decking will occur October 2016 through February 2017
- > Decking will require approximately 14 weekend closures (no work on Veterans Day, Thanksgiving Day, Christmas Day, and New Year's Day)
- > Work is scheduled in several phases; moving southward from 4th and Flower St
- > Full closure of Flower St required Fridays, 7pm to Mondays, 5am
- > Work will occur continuously over 58 hours on weekends
- > During weekdays three southbound lanes and one right-turn pocket will be maintained on Flower Street, from 4th to 5th Street. Equipment will be stored on the east side of the street behind protective fencing.
- > Sidewalk access will be maintained with intermittent closures



Steady State phase on Flower St

Local Access Routes *Use the following detour routes for local access to high-rise buildings along Flower St, between 3rd and 5th St*

PHASE 1



ESSENTIALS

Flower St from 3rd St to 5th St

- > No through access
- > Local access only from 3rd St and 5th St
- > Lower 4th St, between Figueroa and Flower St, closed to through traffic
- > Hours: Fridays at 7pm to Mondays at 5am

LOCAL ACCESS WILL BE MAINTAINED:

- > For Bank of America Plaza and World Trade Center – enter from 3rd St
- > For The Westin Bonaventure Hotel, Citigroup Center, J2 Garage South – enter from 5th St; drivers must make a right turn onto Flower St from 5th St

PHASE 2



ESSENTIALS

Flower St from 3rd St to 5th St

- > No through access
- > Local access only from 3rd St, 4th St, and 5th St
- > Hours: Fridays at 7pm to Mondays at 5am

LOCAL ACCESS WILL BE MAINTAINED:

- > For Bank of America Plaza and World Trade Center – enter from 3rd St
- > For The Westin Bonaventure Hotel valet parking and loading dock, Citigroup Center, and J2 Garage South – enter from 5th St; drivers must make a right turn onto Flower St from 5th St

PHASE 3



ESSENTIALS

Flower St from 3rd St to 5th St

- > No through access
- > Local access only from 3rd St, 4th St, and 5th St
- > Hours: Fridays at 7pm to Mondays at 5am

LOCAL ACCESS WILL BE MAINTAINED:

- > For Bank of America Plaza and World Trade Center – enter from 3rd St
- > For The Westin Bonaventure Hotel, Citigroup Center, and J2 Garage – enter from 4th St
- > For The Westin Bonaventure Hotel valet parking and loading dock – enter from 5th St; drivers must make a right turn onto Flower St from 5th St
- > Citigroup Center parking will be available at J2 Garage North – enter from 4th St

PHASE 4



ESSENTIALS

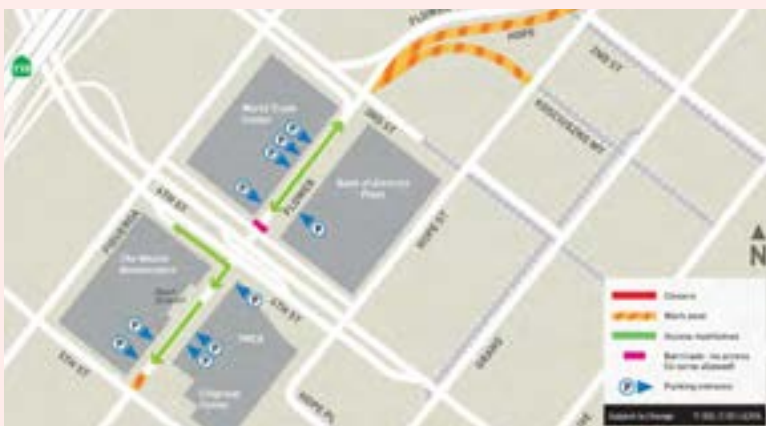
Flower St from 3rd St to 5th St

- > No through access
- > Local access only from 3rd St and 4th St
- > Hours: Fridays at 7pm to Mondays at 5am

LOCAL ACCESS WILL BE MAINTAINED:

- > For Bank of America Plaza and World Trade Center – enter from 3rd St
- > For The Westin Bonaventure Hotel, Citigroup Center, and J2 Garage – enter from 4th St

PHASE 5



ESSENTIALS

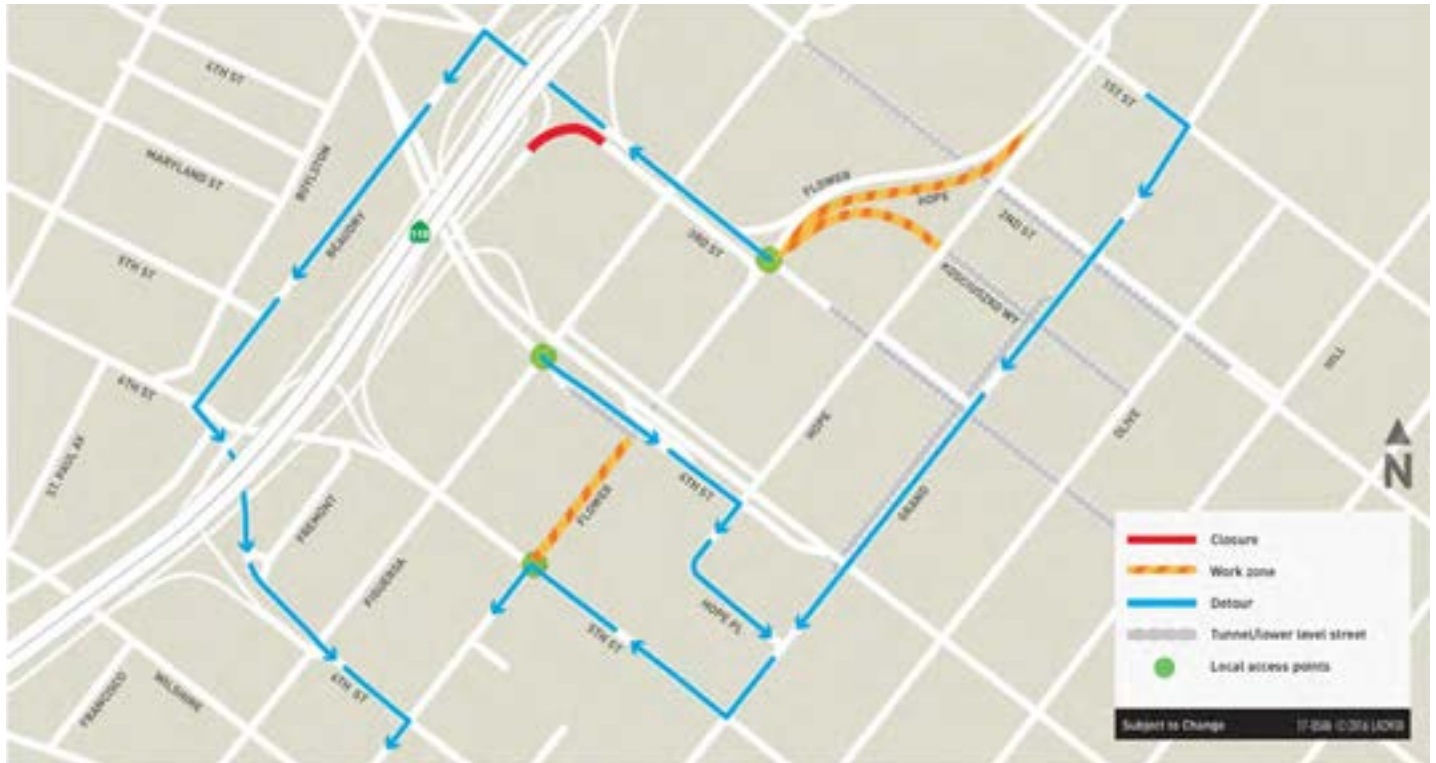
Flower St from 3rd St to 5th St

- > No through access
- > Local access only from 3rd St and 4th St
- > Hours: Fridays at 7pm to Mondays at 5am

LOCAL ACCESS WILL BE MAINTAINED:

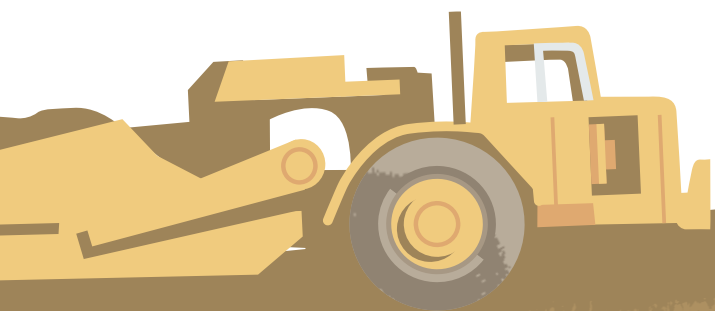
- > For Bank of America Plaza and World Trade Center – enter from 3rd St
- > For The Westin Bonaventure Hotel, Citigroup Center, and J2 Garage – enter from 4th St

Detour Routes *Use the following detour routes to bypass construction on weekends this fall.*




ESSENTIALS


- > Detours will be in place for 14 weekends
- > Flower St will be closed to through traffic between 3rd St and 5th St
- > Local access will be maintained at 3rd St, 4th St, and 5th St
- > Closures start Fridays, 7pm through Mondays, 5am
- > I-110 Northbound 3rd St Eastbound off-ramp will be closed as part of weekend decking activities



Stay in Touch

For additional information, questions, or comments:

 213.922.7277

 regionalconnector@metro.net

 metro.net/regionalconnector

 [@metroconnector](https://twitter.com/metroconnector)

 facebook.com/metroregionalconnector



Metro[®]