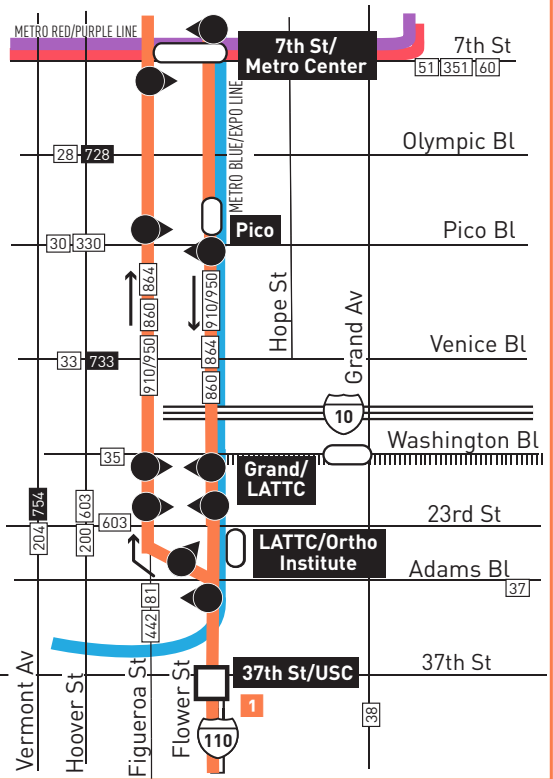


SEE INSET 1

INSET 1 - DOWNTOWN LOS ANGELES



LEGEND

- Line 863 Select Route
- Metro Rail (Out of Service)
- Single Direction Only
- Select Stop
- Metro Rail Station
- Station Stop
- LD LADOT DASH
- LN County of Los Angeles - The Link
- M Montebello Bus Lines

MAP NOTES

- 1 37th St/USC Station**
Freeway Level: Metro 460; CE438, CE448; OCTA 701, 721; T4X
Street Level: Metro 81, 102, 200, 442, 550; DASH F, Southeast, King-East
- 2 Slauson Station**
Freeway Level: Metro 442, 460, 550; DSE; OCTA 701, 721; T4X
Street Level: Metro 45, 81, 108, 358, 745; DASH Southeast
- 3 Manchester Station**
Freeway Level: Metro 460, 550; OCTA 701, 721; T4X; DSE
Street Level: Metro 45, 81, 115, 442, 745
- 4 Harbor Freeway Green Line Station**
Freeway Level: Metro 550; DSE
CE448; OCTA 721; GA1X; T4X
Street Level: Metro 45, 81, 120, 745; GA1X; T1, T2;
Upper Level: Metro Green Line

Northbound Al Norte (Approximate Times/Subject to Traffic Conditions)

Southbound Al Sur (Approximate Times/Subject to Traffic Conditions)

COMPTON			LOS ANGELES			DOWNTOWN LA			DOWNTOWN LA			DOWNTOWN LA			COMPTON		
1 Compton Station/ MLK Transit Center (Palmer/Isadore Hall)			2 Harbor Fwy/Green Line (See Note A)			3 7th St/Metro Ctr (Figueroa/7th)			3 7th St/Metro Ctr (Flower & 7th)			2 Harbor Fwy/Green Line (See Note A)			1 Compton Station/ MLK Transit Center (Palmer/Isadore Hall)		
4:52A			5:08A			5:26A			4:59A			5:24A			5:44A		
5:04			5:20			5:38			5:19			5:44			6:04		
5:16			5:32			5:50			5:38			6:03			6:25		
									5:48			6:15			6:37		
THEN APPROXIMATELY EVERY 12 MINUTES UNTIL						THEN APPROXIMATELY EVERY 12 MINUTES UNTIL											
9:53			10:10			10:33			9:59			10:27			10:27		
10:05			10:22			10:45			10:11			10:39			10:39		
NO MIDDAY SERVICE						NO MIDDAY SERVICE											
3:04P			3:24P			3:49P			3:10P			3:42P			4:10P		
3:16			3:36			4:01			3:22			3:54			4:22		
3:28			3:48			4:13											
THEN APPROXIMATELY EVERY 12-13 MINUTES UNTIL						THEN APPROXIMATELY EVERY 12-13 MINUTES UNTIL											
7:30			7:48			8:10			7:24			7:54			8:19		
7:42			8:00			8:22			7:36			8:06			8:31		
									7:48			8:18			8:43		

Special Notes

- A Arrivals and departures at Harbor Green Line Station are subject to traffic conditions.
- A Las llegadas y salidas en la estación Harbor Green Line están sujetas a las condiciones del tráfico en el freeway.

- Blue Line: Out of service between Compton Station and 7th St/Metro Center starting Saturday, June 1, 2019 through September 2019.
- Willowbrook/Rosa Parks Station: Blue Line will remain out of service during the North Segment closure, Green Line will remain open.
- Blue Line: Fuera de Servicio entre Compton Station y 7th St/Metro Center, Empezando el Sábado 1 de Junio del 2019 hasta Setiembre del 2019.
- Estación Willowbrook/Rosa Parks: Blue Line permanecerá cerrada y fuera de servicio durante el cierre hacia el Norte. El servicio al Green Line permanecerá abierto

Blue Line Bus Shuttle & Alternate Routes/Rutas Alternas

ENGLISH			ESPAÑOL	
SERVICE/SERVICIO	HOURS OF OPERATION	FARE	HORAS DE OPERACION	TARIFA
860 Express	Mon-Fri 5am-7:30pm Weekend 10am-6pm	Free transfer w/ TAP or \$1.75	Lunes a Viernes 5am-7:30pm Fines de semana 10am-6pm	Transbordo gratis con TAP o \$1.75
863 Select	Weekday rush hours only 5am-10am, 3pm-7:30pm	Free transfer w/ TAP or \$1.75	Lunes a Viernes sólo en horas pico 5am-10am, 3pm-7:30pm	Transbordo gratis con TAP o \$1.75
864 Local	Sun-Thu 4:00am-1:30am Fri-Sat 4:00am-2:30am	Free - All Door Boarding	Domingo-Jueves 4:00am-1:30am Viernes-Sábado 4:00am-2:30am	Gratis - Use todas las puertas para abordar
ALTERNATE ROUTES	CONNECTION		RUTAS ALTERNAS	CONEXIONES
Metro Silver Line 910/950	7th St/Metro Ctr to Harbor Fwy Green Line Station		7th St/Metro Ctr hacia Harbor Fwy Green Line Station	
Metro Local 55/355	Downtown LA to Willowbrook/Rosa Parks Station via Compton Av		Downtown LA hacia Willowbrook/Rosa Parks Station a través de Compton Av	
Metro Local 115	Manchester Silver Line Station to Firestone Station		Manchester Silver Line Station hacia Firestone Station	
Metro Local 108/358	Slauson Silver Line Station to Slauson Blue Line Station via Slauson Av		Slauson Silver Line Station hacia Slauson Blue Line Station a través de Slauson Av	

- Expo Line: Pico and 7th St/Metro Center will close for 60-days starting Sunday, June 23, 2019.
- Expo Line: Las estaciones Pico y 7th St/Metro Center estarán cerradas por unos 60 días empezando el domingo 23 de Junio del 2019.

Expo Line Bus Shuttle & Alternate Routes/Rutas Alternas

ENGLISH			ESPAÑOL	
SERVICE/SERVICIO	HOURS OF OPERATION	FARE	HORAS DE OPERACION	TARIFA
856 Local	Sun-Thu 4:00am-1:30am Fri-Sat 4:00am-2:30am	Free - All Door Boarding	Domingo -Jueves 4:00am-1:30am Viernes-Sábado 4:00am-2:30am	Gratis - Use todas las puertas para abordar.
ALTERNATE ROUTES	CONNECTIONS		RUTAS ALTERNAS	CONEXIONES
Metro Rapid 720	Wilshire Bl/Westwood Bl to Wilshire/Western Purple Line Station via Wilshire Bl		Wilshire Bl/Westwood Bl hacia Wilshire/Western Purple Line Station a través de Wilshire Bl	
Metro Rapid 733	Culver City Station to Downtown LA via Venice Bl		Culver City Station hacia Downtown LA a través de Venice Bl	
Metro Rapid 754	Expo/Vermont Station to Wilshire/Vermont Red & Purple Line Station via Vermont Av		Expo/Vermont Station hacia Wilshire/Vermont Red & Purple Line Station a través de Vermont Av	
Metro Silver Line 910/950	7th St/Metro Ctr Station to LATTC/Ortho Inst Station		7th St/Metro Ctr Station hacia LATTC/Ortho Inst Station	
Big Blue Bus R7	Downtown Santa Monica or Expo/Sepulveda Stations to Wilshire/Western Purple Line Station		Downtown Santa Monica o Expo/Sepulveda Stations hacia Wilshire/Western Purple Line Station	
Big Blue Bus R10	Downtown Santa Monica or Expo/Bundy Stations to Downtown LA		Downtown Santa Monica o Expo/Bundy Stations to Downtown LA	