

I-710 Early Action Soundwalls

PROJECT OVERVIEW

July 2016



Project Description

I-710 South Early Action Soundwall Projects are consistent with the I-710 South Corridor project alternatives and are being advanced for earlier delivery. Metro identified five miles of new soundwalls along I-710, plus an additional seven miles of existing walls that can be aesthetically treated to match the new walls. Metro procured three contracts to complete the plans, specifications and estimates (PS&E) phase of the I-710 Early Action Soundwall Program.

Project Highlights

Three soundwall design contracts were awarded by Metro in Summer 2015. The soundwalls in Package 1 are on city-owned property in cities of Long Beach and South Gate. The soundwalls in Packages 2 and 3 are in Caltrans right-of-way.

Project Sponsor

Los Angeles County Metropolitan Transportation Authority (Metro)

Participating Agencies

California Department of Transportation (Caltrans), Gateway Cities Council of Government (GCCOG), I-710 Corridor Cities

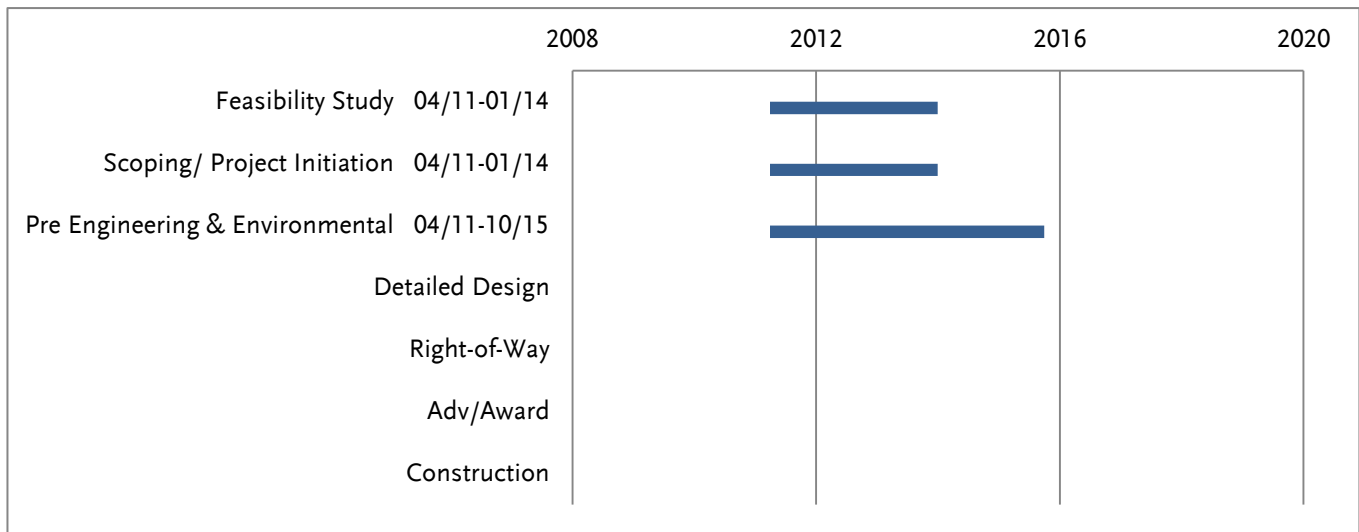
FUNDING

PROJECT COST ESTIMATE Cost Estimate by Phase (Millions)	
Feasibility Study	\$0.2
Scoping/Project Initiation Document	\$0.2
Preliminary Engineering & Environmental	\$3.1
Detailed Design	\$9.2
Right of Way	\$4.3
Construction	\$43.2
TOTAL	\$60.2

PROJECT FUNDING Funding by Fund Source (Millions)	
Measure R	\$12.7
To be determined	\$47.5
TOTAL	\$60.2

PROJECT SCHEDULE

(Subject to programming of funds)



Note: Schedule of subsequent phases subject to change depending upon availability of funds.

The information on this fact sheet is subject to periodic updates.

Contact Us

Lucy Olmos, Project Manager
 One Gateway Plaza
 Los Angeles, CA 90012
 (213) 922-7099
 OlmosL@metro.net

