

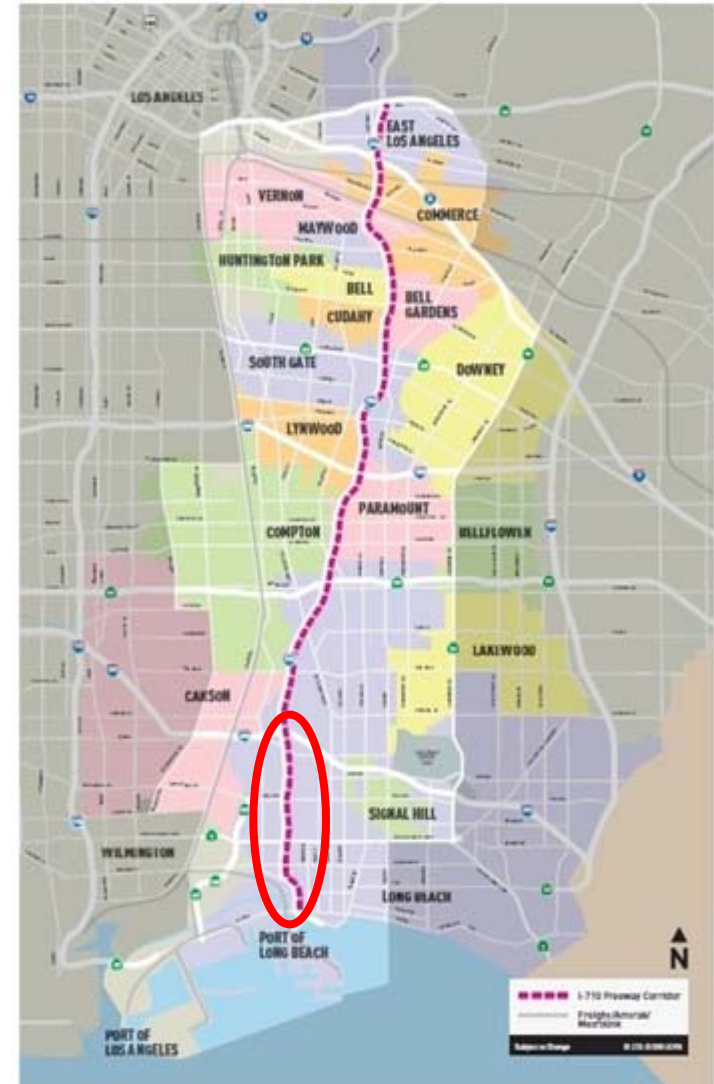
Los Angeles County Metropolitan Transportation Authority  
**I-710 Corridor Project South End  
Utility Study**

*Presented at I-710 Corridor PC  
June 30, 2011*



# Project Limits

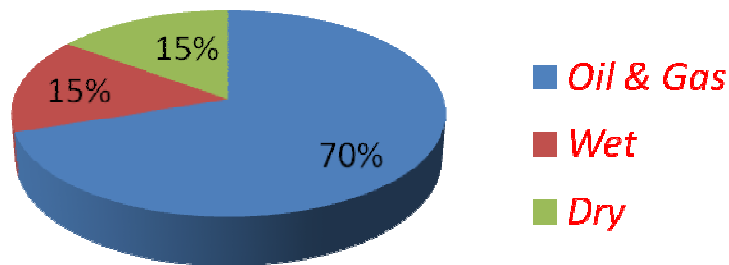
- Ocean Blvd to I-405 (4 miles)
  - Ocean Boulevard
  - Pico Avenue
  - Shoemaker Bridge / Shoreline Drive
  - Anaheim Street
  - Pacific Coast Highway (PCH)
  - Willow Street
  - Wardlow Road
  - I-405 Freeway



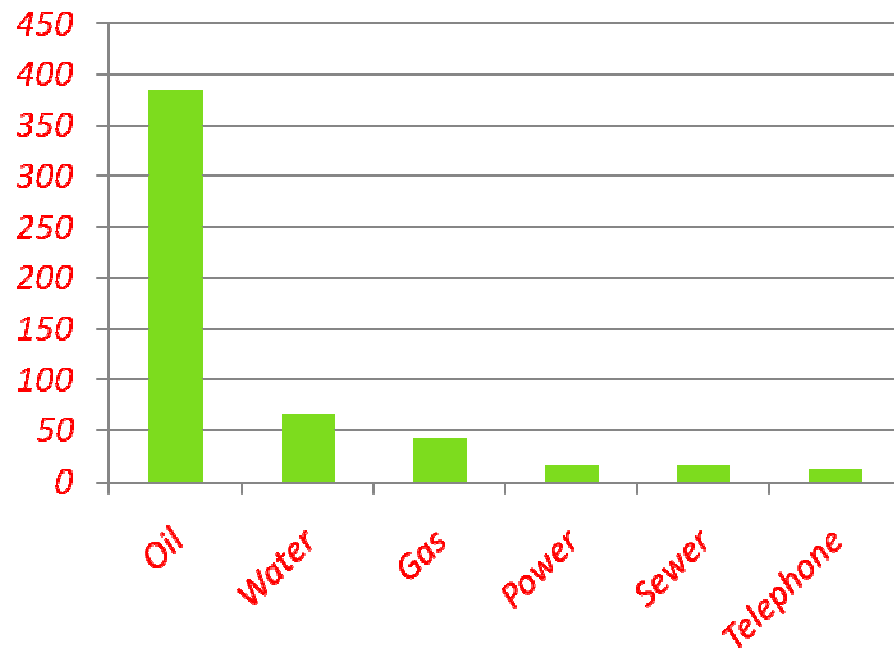
# Utility Conflicts

- 400+ utility conflicts
- Underground & Overhead
- Oil & Gas facilities
- SCE transmission lines
- Pipe Bridges over LA River

**Utility Conflicts**

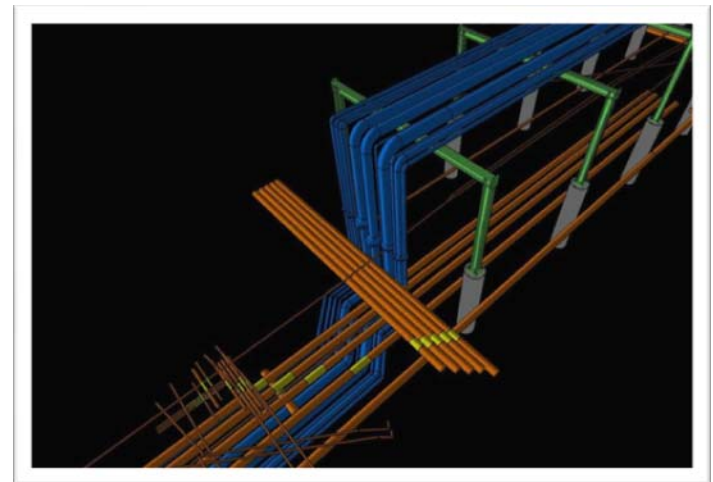


**Utility Impacts**



# Scope of the Study

- Build on the work done to date
- Utility Coordination
  - *Data Gathering*
  - *Meeting & Coordination*
  - *Field Verification*
  - *I-710 Corridor, POLB, COLB projects*
- Mapping
  - *3D Mapping of corridor, utilities and proposed project*
  - *Right-of-way delineation*
  - *Use of GIS*



# Scope of the Study

- Automation Study
  - *Overhead electric/catenary systems*
  - *Embedded electric or magnetic-levitation systems*
  - *Embedded facilities for automatic operation of vehicles*
  - *Green Truck Technology*
- Structures
  - *Advance Planning Studies for Freight Corridor (Alt 6)*
  - *Foundation Type Selection Reports (Alt 6)*

# Scope of the Study

- Develop utility relocation strategies
  - *Identification of conflicts*
  - *Development of relocation concept plans*
  - *Owner input & approvals*
- Final Products
  - *Utility Relocation Strategy Report*
  - *Automation Study*
  - *Structure Advance Planning Studies & Type Selection Reports*

# Draft Schedule of Deliverables

Draft Deliverables	Draft	Final
<i>Utility Base Plans</i>	Oct 2011	Jan 2011
<i>Concept Relocation Plans for Major Utilities</i>	Jan 2011	Mar 2012
<i>Freight Corridor Automation Study</i>	Oct 2011	Jan 2011
<i>Freight Corridor APS Report</i>	Jan 2011	Apr 2012
<i>Freight Corridor Type Selection Report (Foundation only)</i>	Apr 2012	July 2012
<i>Utility Impacts Report</i>	May 2012	July 2012
<i>Utility Relocation Strategy Report</i>	Aug 2012	Oct 2012