

Mobility. Environment. Community. Economy. Technology



I-710 Corridor Project EIR/EIS

metro.net

# I-710 EIR/EIS Environmental Studies Overview

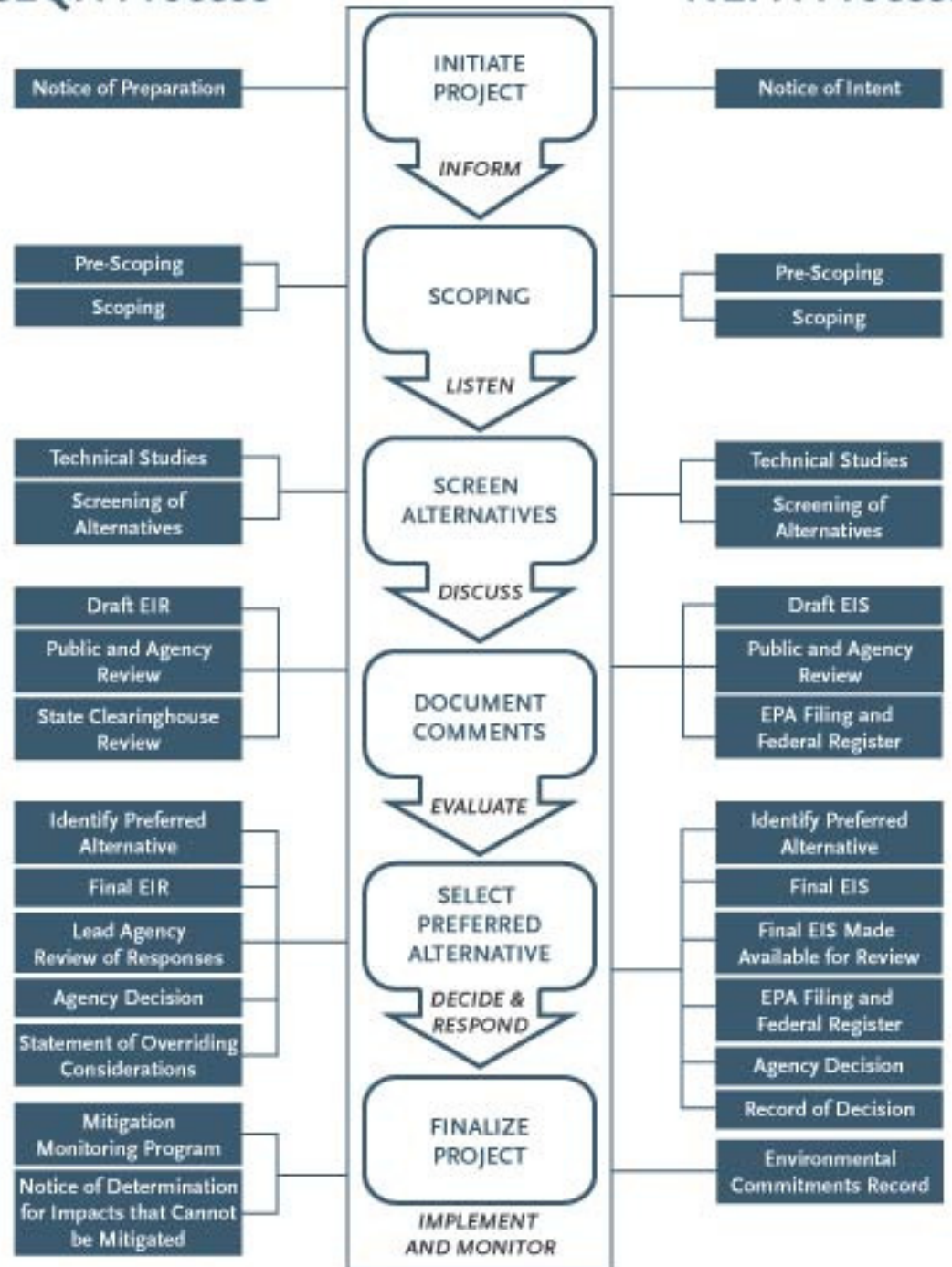
## I-710 Corridor Advisory Committee August 27, 2009



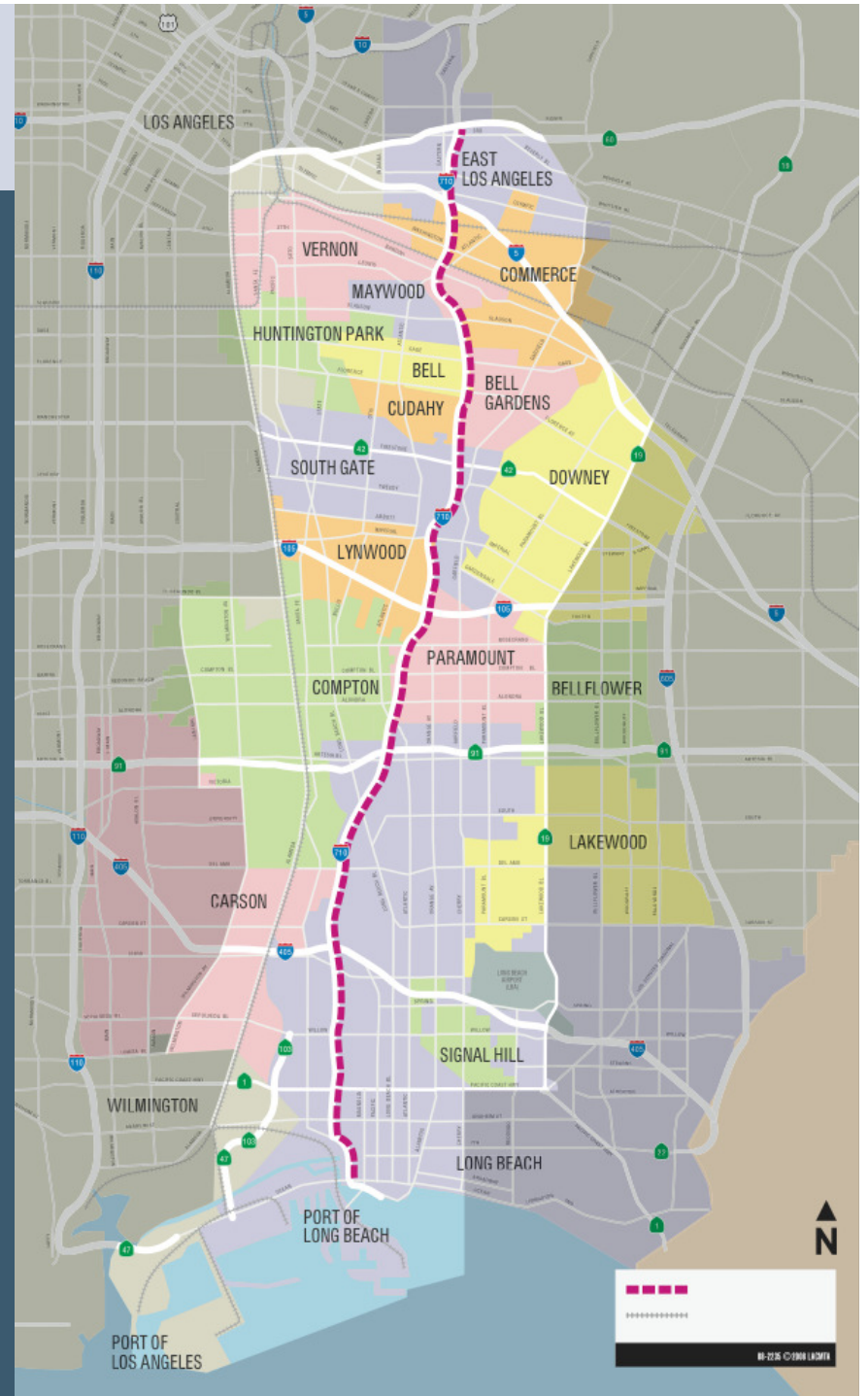
# EIR/EIS Recap

## CEQA Process

## NEPA Process



# EIR/EIS Study Area



# EIR/EIS Technical Studies - Organization

- Regulatory Setting
- Methodology
- Affected Environment
- Environmental Consequences
  - Beneficial/Adverse Effects
  - Short Term/Long Term
  - Comparison between Alternatives
  - Public Health Considerations
  - Cumulative Effects
- Avoidance, Minimization and/or Mitigation Measures

# EIR/EIS Topic Areas

- Human Environment
- Physical Environment
- Biological Environment

# EIR/EIS Topic Areas

## Human Environment

- Land Use
- Growth
- Community Impacts
  - Community Character and Cohesion
  - Business/Residential Relocations
  - Environmental Justice
- Utilities/Emergency Services
- Traffic and Transportation/Ped and Bike Facilities
- Visual/Aesthetics
- Cultural Resources

# EIR/EIS Topic Areas

## Physical Environment

- Hydrology and Floodplain
- Water Quality and Stormwater Runoff
- Geology/Soils/Seismic/Topography
- Paleontology
- Hazardous Waste/Materials
- Air Quality/Health Risk
- Greenhouse Gas Emissions
- Noise
- Energy

# EIR/EIS Topic Areas

## Biological Environment

- Natural Communities
- Invasive Species
- Plant Species
- Animal Species
- Threatened and Endangered Species
- Wetlands and other Waters



# Environmental Studies

The I-710 Corridor Project EIR/EIS

## EIR/EIS Topic Areas and Supporting Studies

04-13-09

### Natural Environment Study

Includes analysis of natural communities, plant species, animal species, invasive species, and threatened & endangered species.

### Section 4(f) Evaluation

Includes analysis of impacts to parks, wildlife refuges, and historic sites.

### Community Impact Assessment

Includes analysis of environmental justice, land use, growth-related effects, farmsteads, community character & cohesion, economics (tax revenues), and community facilities & services.

### KEY

Topic areas in Chapter 3 of the EIR/EIS: *Affected Environment, Environmental Consequences, and Avoidance, Minimization, and/or Mitigation Measures.*

Technical studies that inform the various topic areas in Chapter 3. Matching colors indicate which studies inform each topic area.

Studies, assessments, and evaluations that support multiple topic areas.

