

# I-405 Sepulveda Pass Widening Project

Sunset Bridge Improvements Community Meeting

May 3, 2010



## Project Scale

The I-405 Sepulveda Pass Widening Project will add a 10-mile northbound carpool lane on the San Diego Freeway (I-405) from the Santa Monica Freeway (I-10) to the Ventura Freeway (US 101). Ramps, bridges and sound walls also will be improved.

Completion of the \$1 billion project is projected for spring 2013.



# Project Benefits

Specific improvements include:

- Removal and replacement of three bridges at Skirball Center Dr., Sunset Bl. and Mulholland Dr.
- Realignment of 27 on- and off-ramps
- Widening of 13 existing overpasses and structures
- Construction of approximately 18 miles of retaining walls and sound walls.



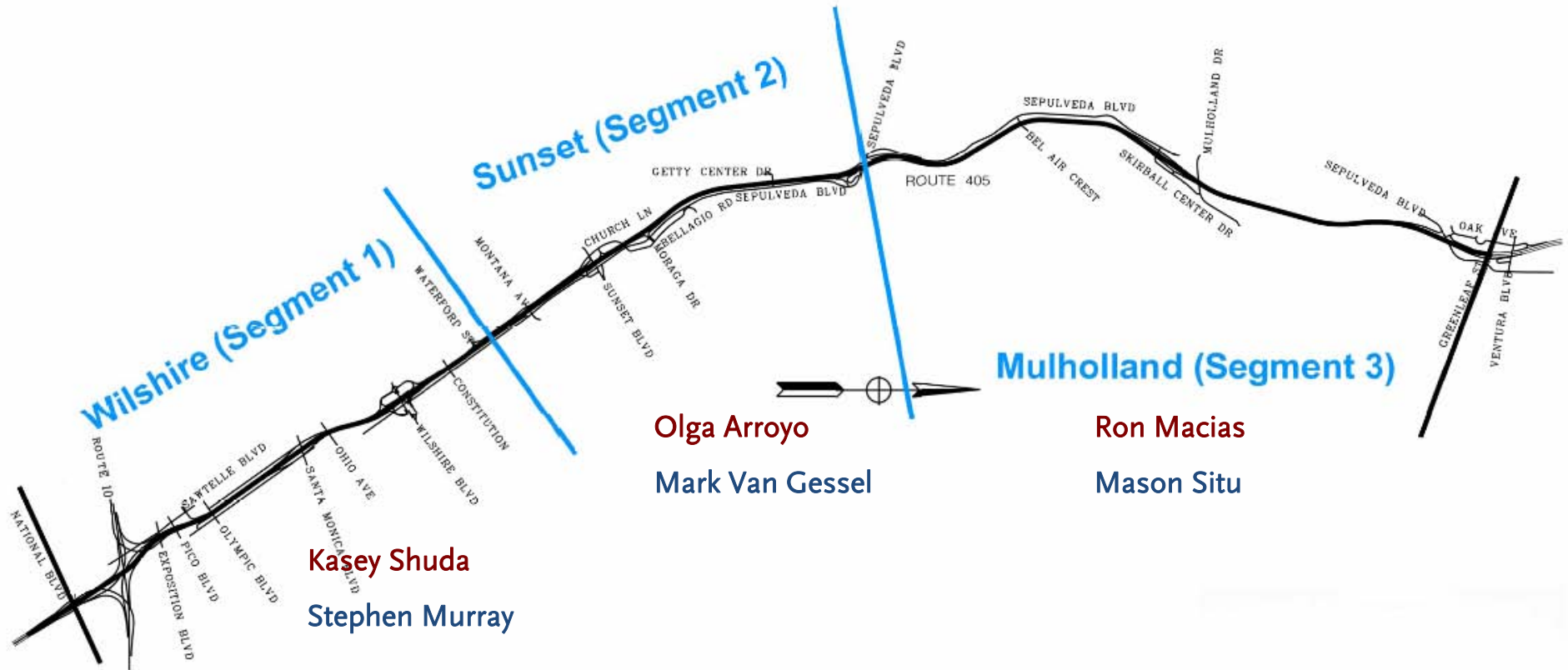
## Project Benefits (Continued)

Specific improvements include:

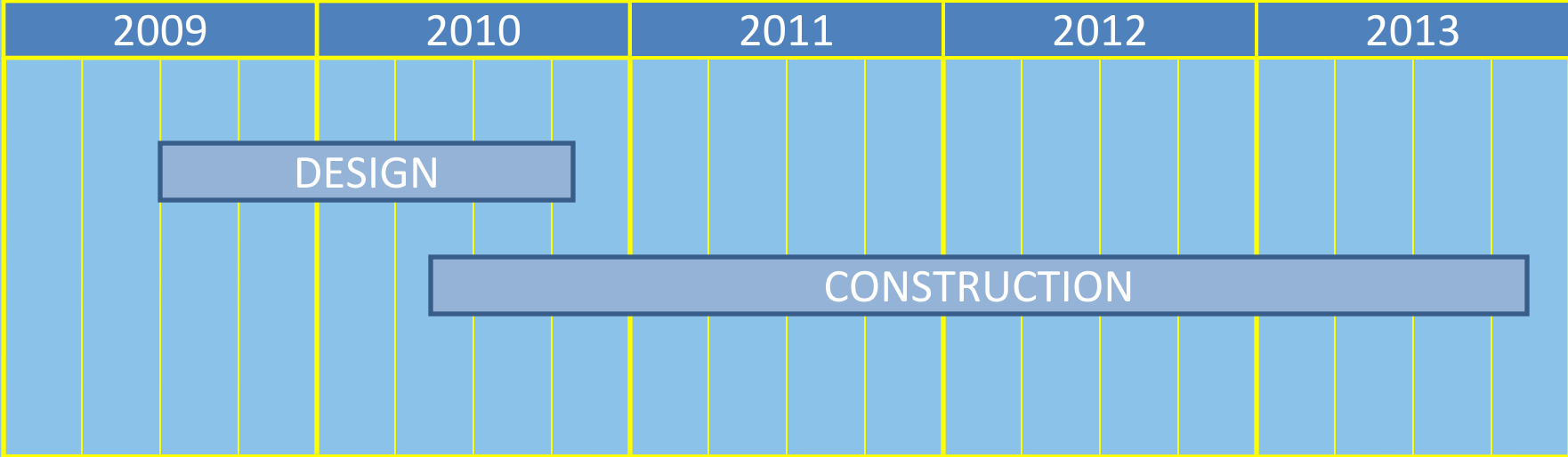
- Reduced commuter time
- Reduced air pollution
- Rideshare incentives
- Improved links with state and regional transportation network



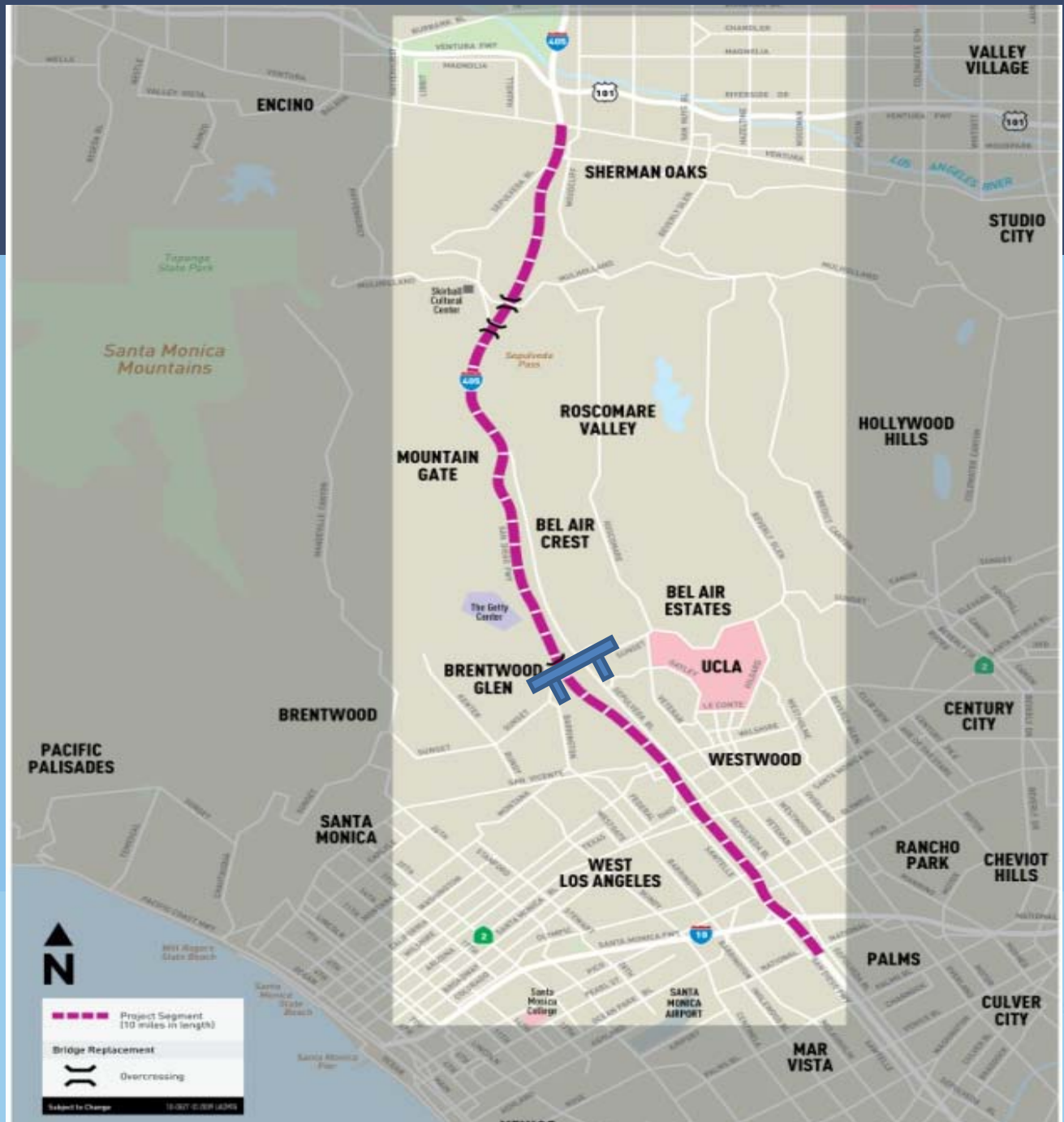
# Project Approach



# Schedule



# Project Overview





# Sunset Segment Look Ahead (Waterford to Sepulveda)

Location	Activity	Closures/Notes	Work Hours	Projected Date
Sepulveda between Montana and Sunset	Undergrounding utilities	NB closure off-peak hours. Closure of Sepulveda intersection at Homedale, Bronwood, Alleyway	Day/Night	March through May
	Tree removal (empty lot)			Late March
	Clear hillside (shrubs) Phase I	Lane reduction	Day	Early May
	Build access road		Day	May
	Clear hillside (trees) Phase II	Lane reduction	Day	Early May
	Begin retaining and sound walls		Day/Night	May





## Sunset Segment Look Ahead (Continued)

Location	Activity	Closures/Notes	Work Hours	Projected Date
Sunset Bridge	Clear on/off ramps	Lane closures	Day/Night	Early May
	Realign traffic	Traffic reconfiguration (2 lanes each direction); lane closures	Night	May 7
	Begin Sunset bridge demolition	Traffic delays; lane reduction	Day/Night	Late June
	Clear and grub (Montana to Church)		Day	Early May
	Yard development		Day	Late April – Early May



## Sunset Segment Look Ahead (Continued)

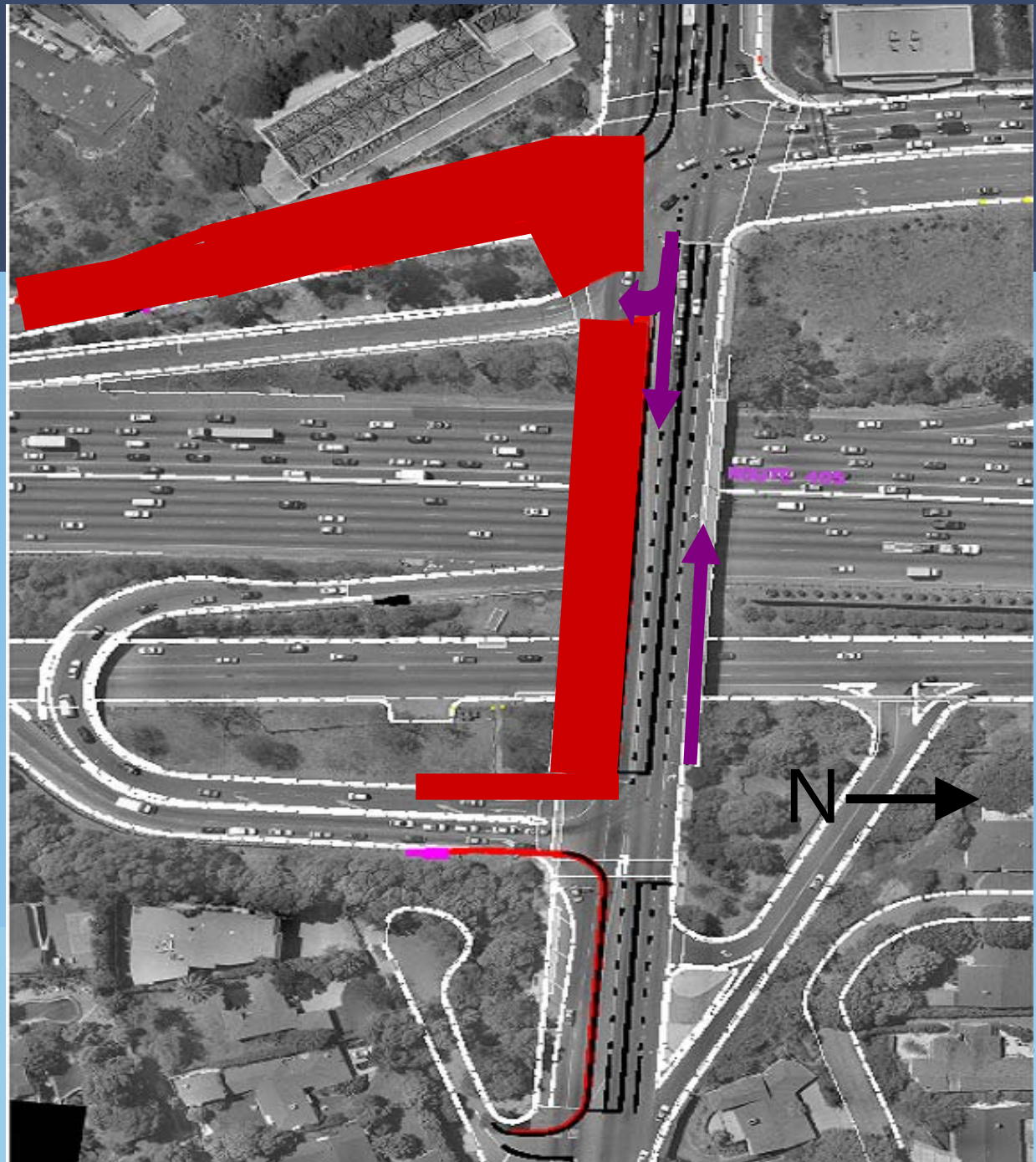
Location	Activity	Closures/Notes	Work Hours	Projected Date
Church Ln. at Sepulveda (northbound)	Add an additional lane, improve mobility	Full weekend closure	Day/Night	April 26 – May 3 weekend-April 30
Church Ln at Sunset (southbound)	LADWP (LA-29) Waterline improvement project	6 - month closure of Church Ln. between Sunset and Kiel St.	Day/Night	May 7
Sepulveda/Getty Ct. Drive	Yard development		Day/Night	Ongoing



# Traffic Reconfiguration

Start:

- Night of May 7, 2010
- 2 lanes in each direction
- LA29 closure of Church
- Bridge preparation begins



# Build Access Road – Vegetation Removal

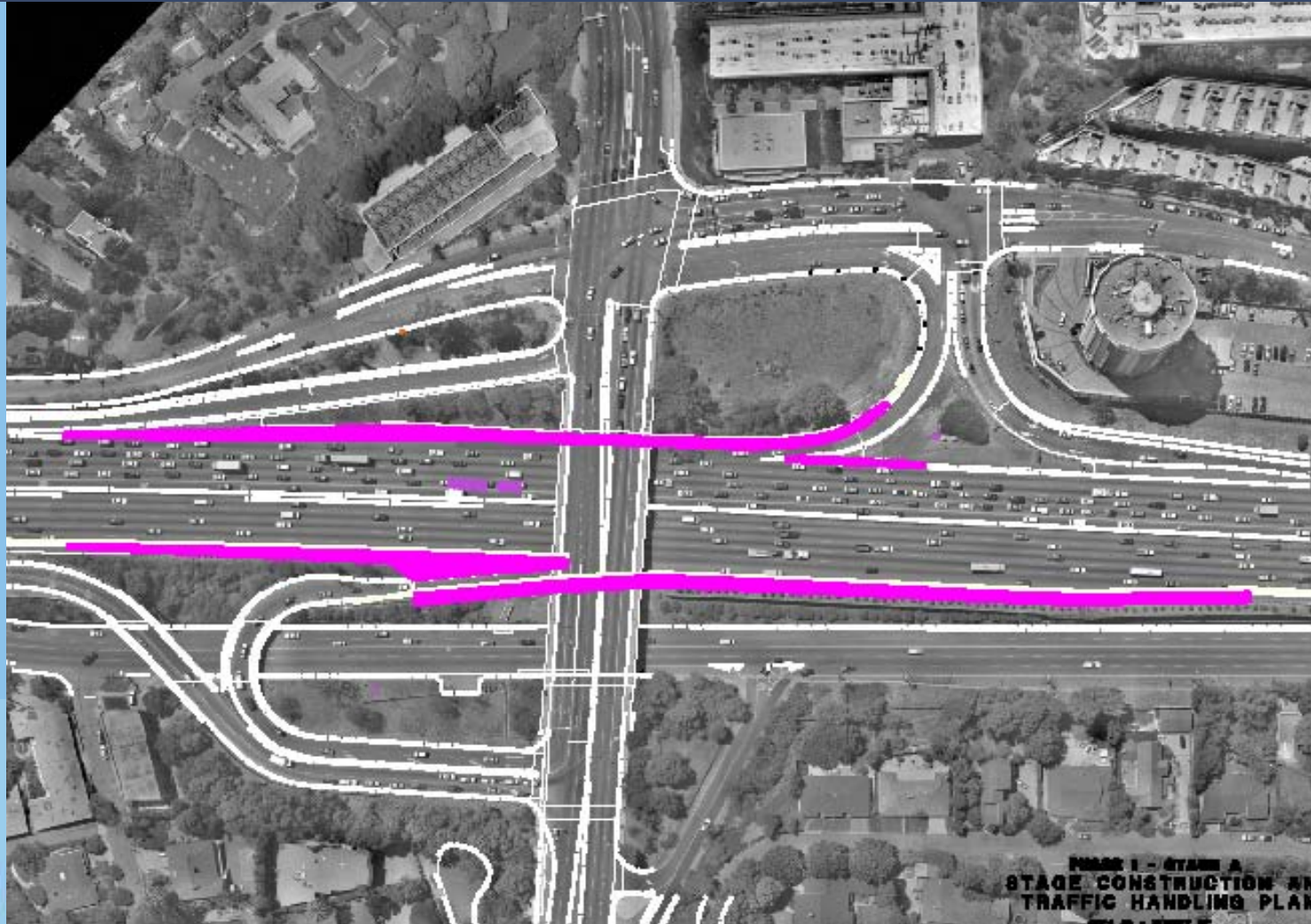


FIGURE 1 - STAGE A  
STAGE CONSTRUCTION AND  
TRAFFIC HANDLING PLAN

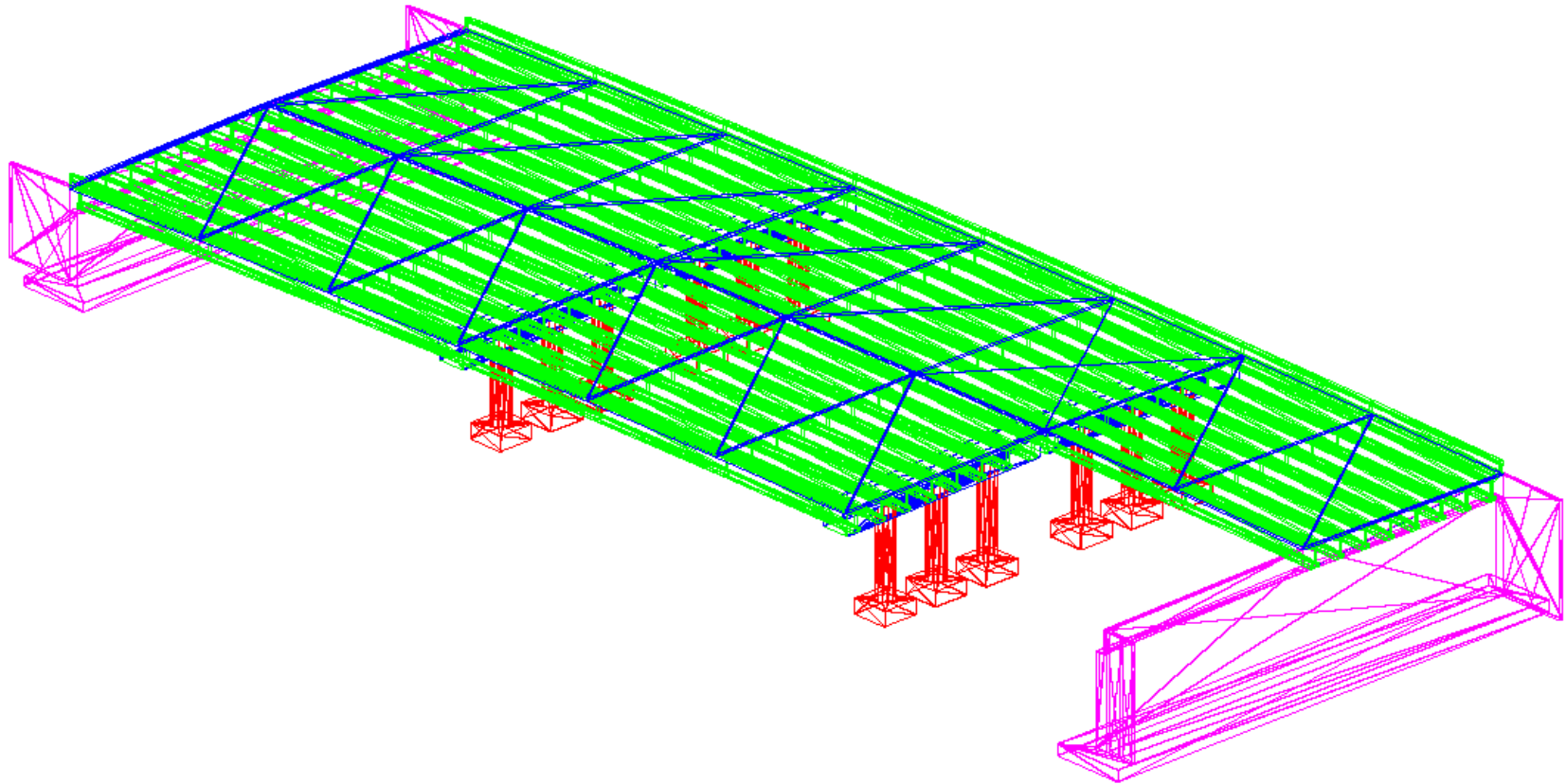




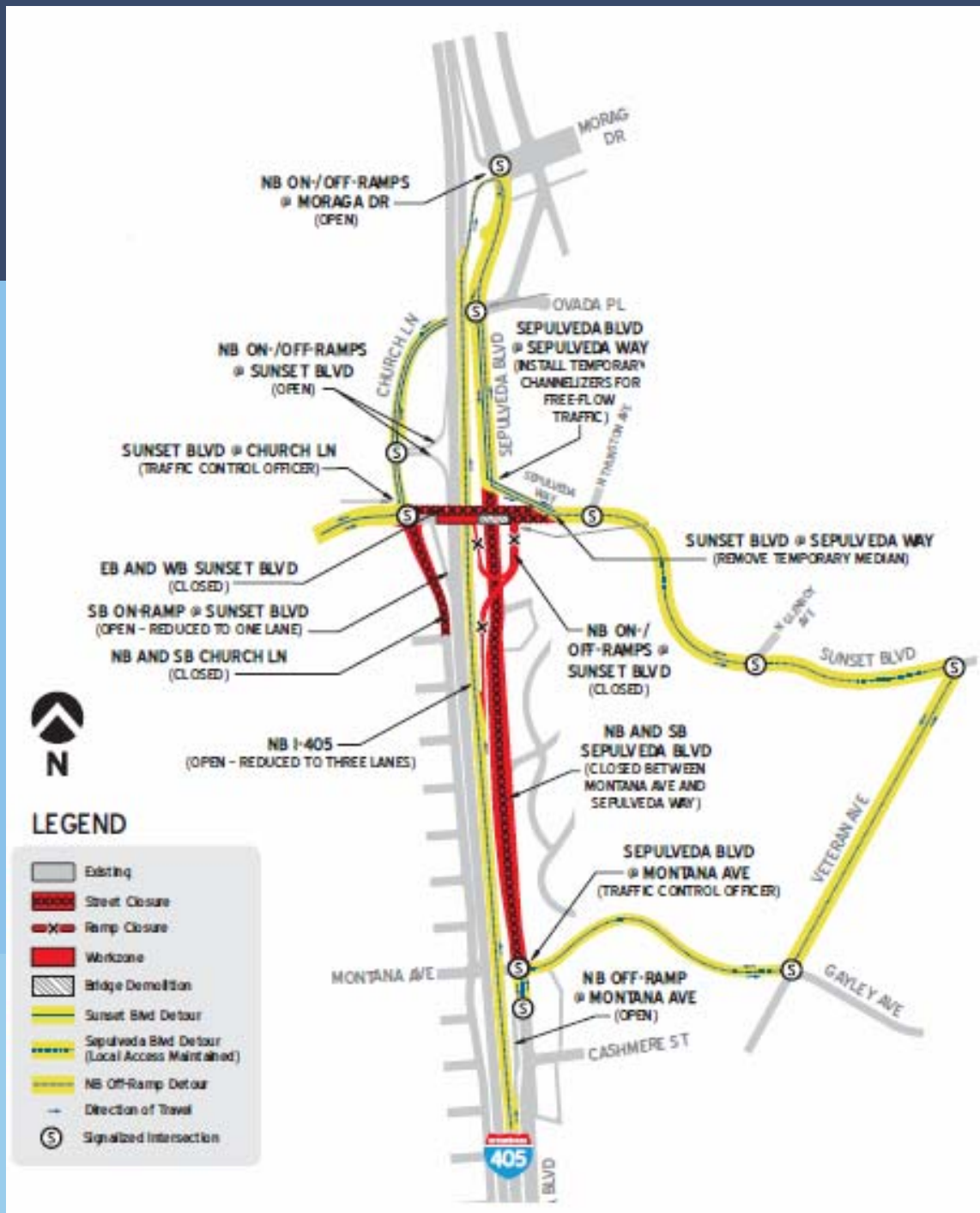
# Demolition of Bridge Over Sepulveda Bl – 2 Nights



# Demolition of Bridge Over Sepulveda Bl – 2 Nights



# Sepulveda Bl Detour



## LEGEND

- Existing
- Street Closure
- Ramp Closure
- Workzone
- Bridge Demolition
- Sunset Blvd Detour
- Sepulveda Blvd Detour (Local Access Maintained)
- NB Off-Ramp Detour
- Direction of Travel
- Signalized Intersection

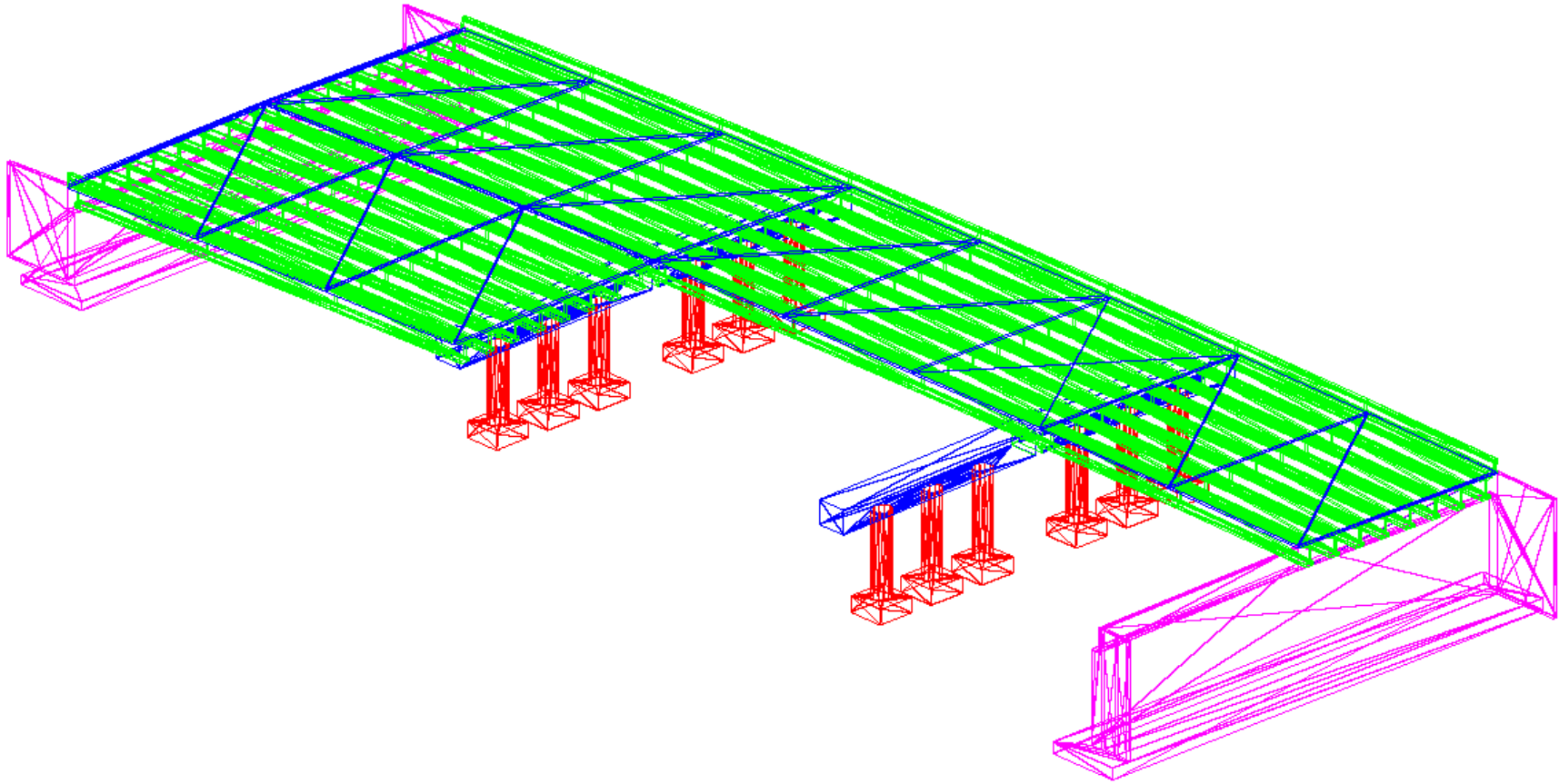




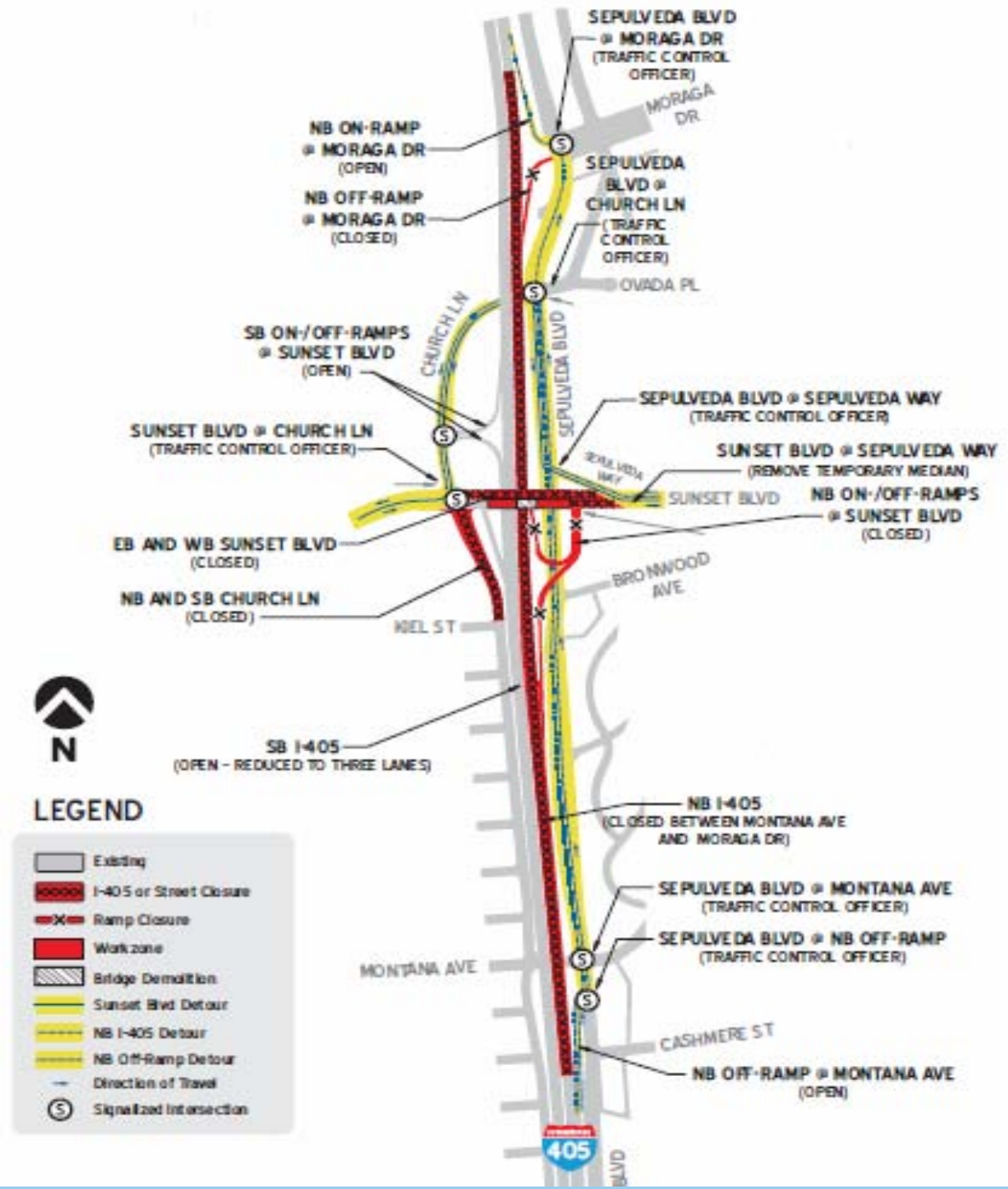
# Demolition of Bridge Over NB 405 – 2 Nights



# Demolition of Bridge Over NB 405 – 2 Nights



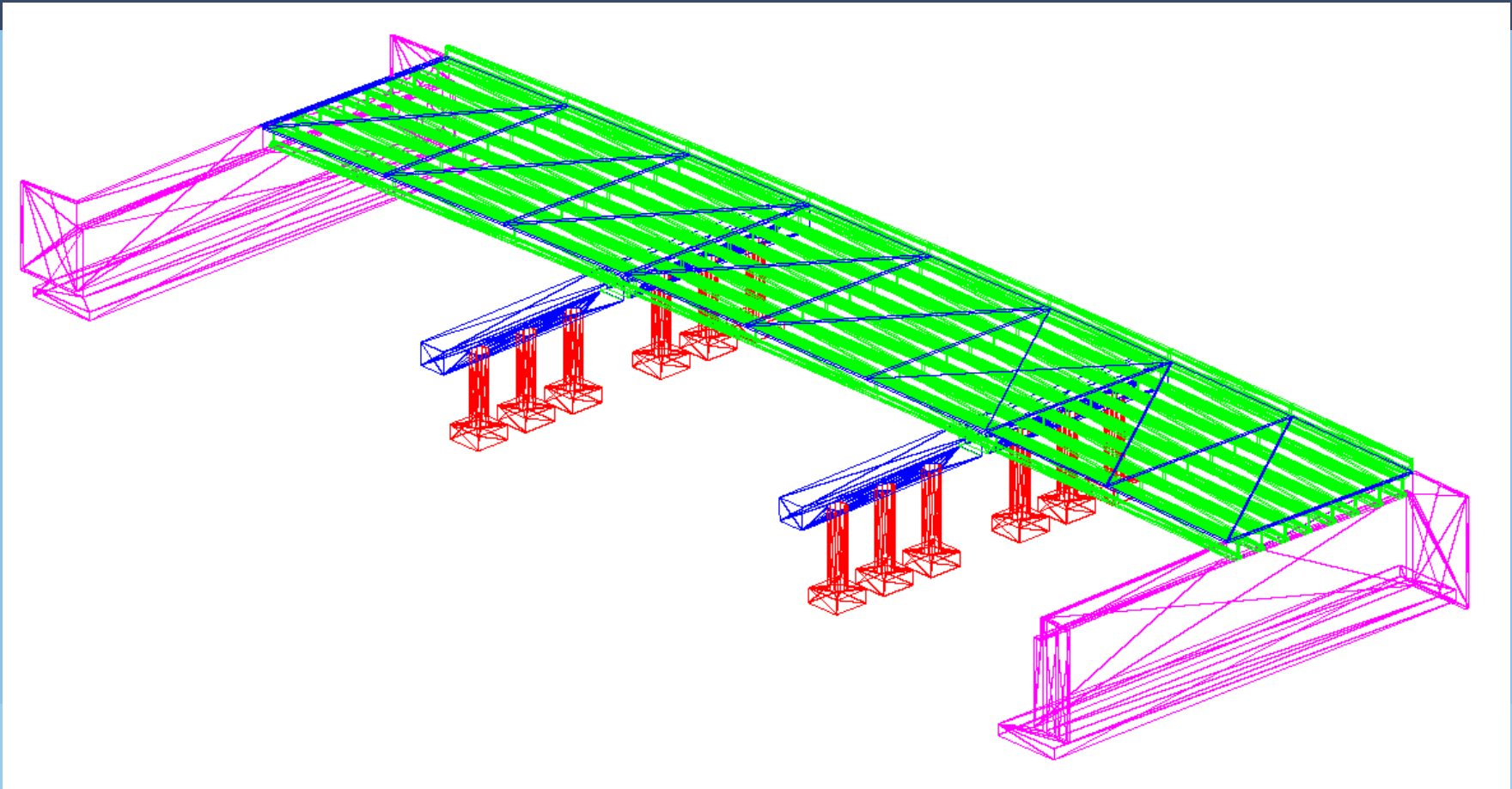
# NB 405 Closure Detour



# Demolition of Bridge Over SB 405 – 2 Nights

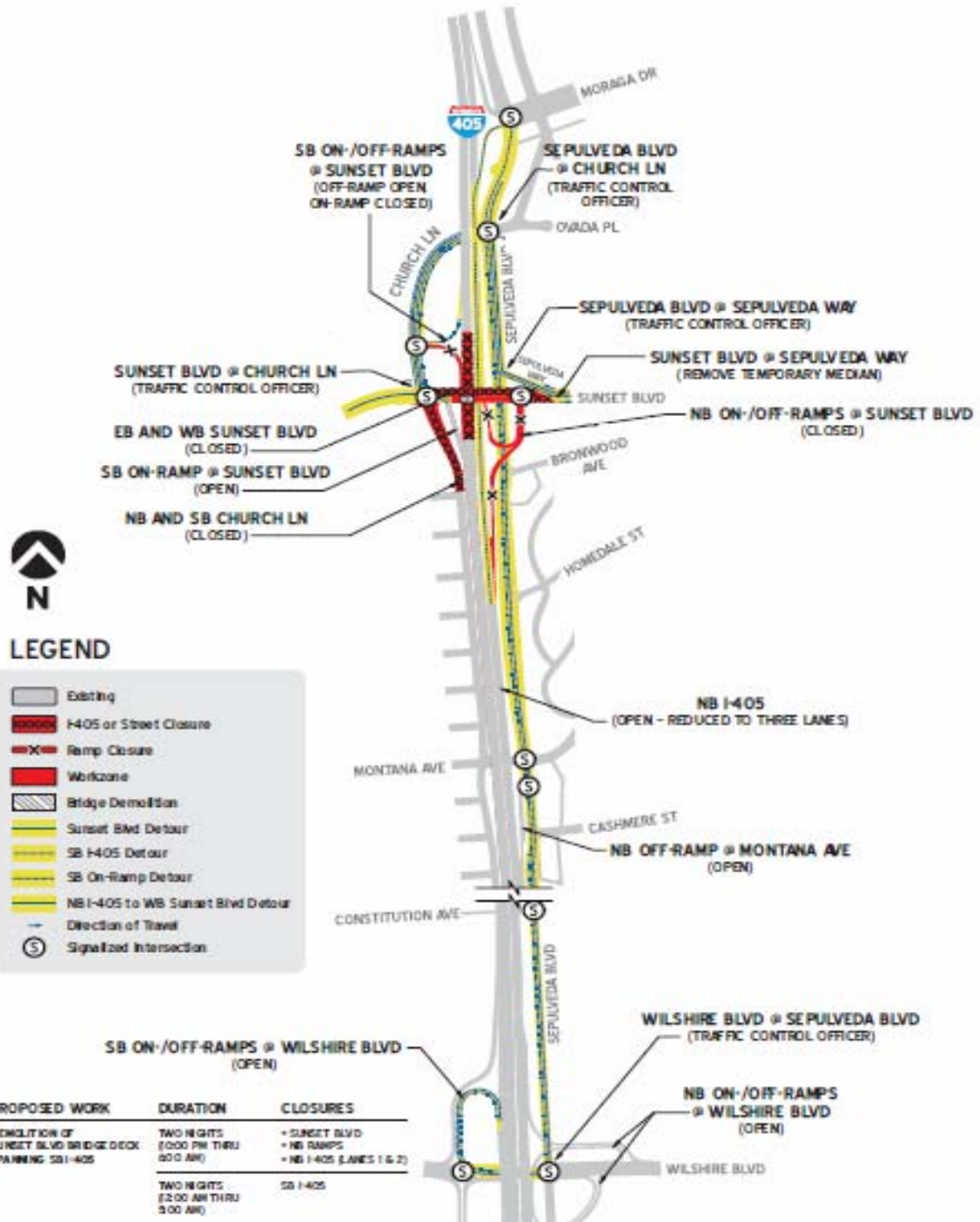


# Demolition of Bridge Over SB 405 – 2 Nights





# SB 405 Closure Detour

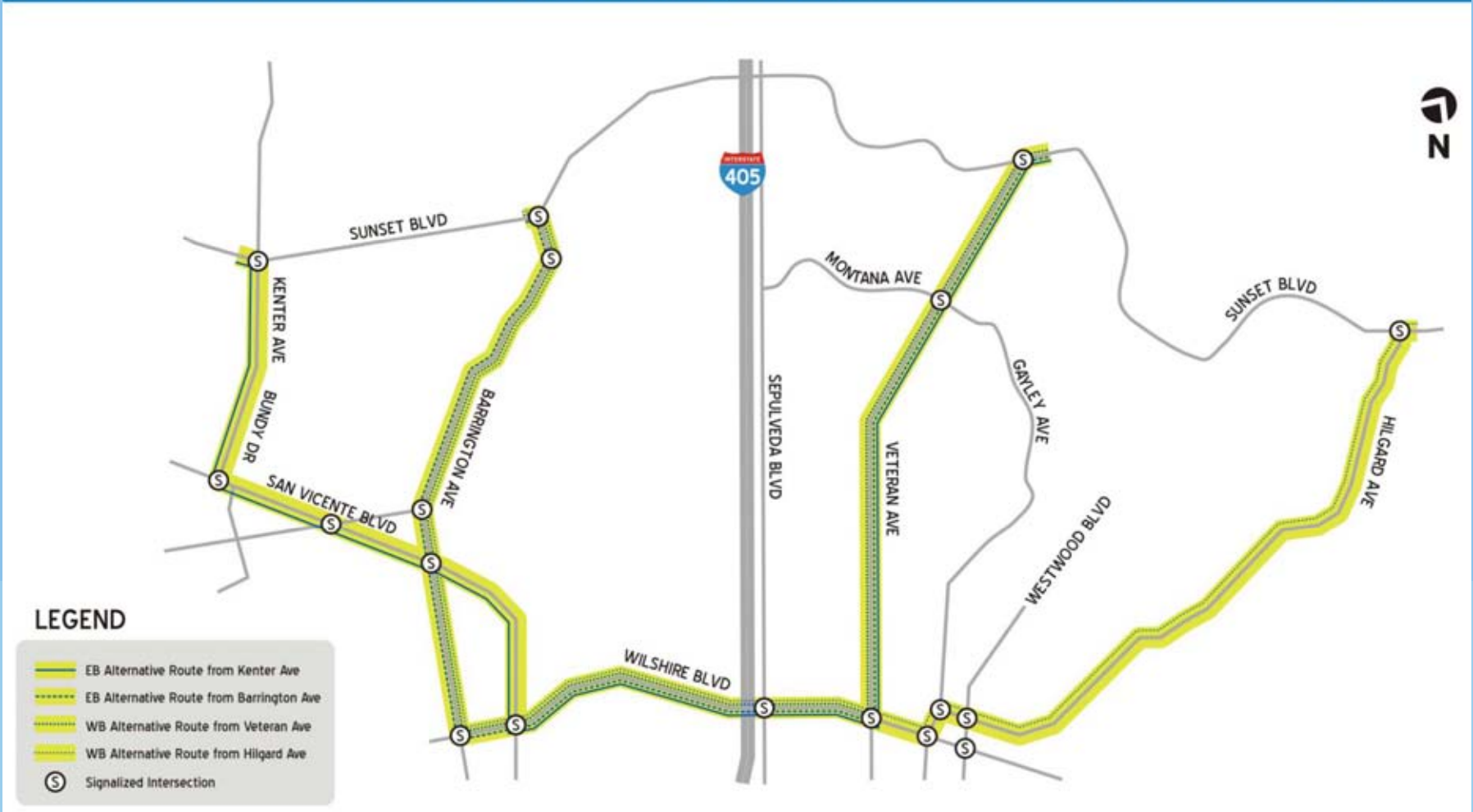






# Alternative Routes – Sunset Bridge Reconstruction

## STAGE CONSTRUCTION and TRAFFIC HANDLING PLAN: Sunset Bridge Reconstruction Alternative Routes (All Phases and Stages)



# Construction Mitigation

## Construction Noise Mitigation

- Monitoring noise levels during construction
- Reducing noise at point of generation
- Reducing noise at point of reception
- Limiting night work
- Limiting equipment idling
- Operating equipment at lowest power possible
- Establishing complaint process

## Emergency coordination

- LAPD, LAFD, CHP, etc.



# Sunset Bridge Outreach Efforts

## Online

- Metro.net/405
- Twitter
- Facebook
- Eblast
- The Source

## Media Buys

- Print ads
- Video display ads
- Backlit boards and digital displays at fitness centers
- LATimes.com
- DailyBruin.com



# Sunset Bridge Outreach Efforts

## Briefings

- Home owner's associations
- Neighborhood Councils
- Major institutions
- CD11 Transportation Advisory Committee
- West LA Traffic Committee
- Bus operations (Metro and municipal operators)
- Online media briefing
- Online chat



# Sunset Bridge Outreach Efforts

## Construction Notices/Fact Sheets

- Schools, faith based organizations, recreation centers
- Emergency responders
- LAWA Flyaway
- AAA and other transportation organizations
- Taxis, FedEx, UPS, etc.
- Door-to-door distribution (residents and businesses)
- Libraries
- Offices of elected officials



## For More Information

Project Hotline: (213) 922-3665

I405@metro.net

[www.metro.net/405](http://www.metro.net/405)

[www.facebook.com/405project](http://www.facebook.com/405project)

Twitter: [http://twitter.com/I\\_405](http://twitter.com/I_405)

Nixle: [nixle.com](http://nixle.com)

