

## Destinations

### DINING

- 21 Choices Frozen Yogurt  
85 W Colorado Bl
- A'Float Sushi  
87 E Colorado Bl
- Akbar Cuisine of India  
44 N Fair Oaks Av
- Barney's Beanery  
99 E Colorado Bl
- Boba World  
24 W Colorado Bl
- Buca di Beppo  
80 W Green St
- California Pizza Kitchen  
99 N Los Robles Av
- Chado Tea Room  
79 N Raymond Av
- Cheesecake Factory  
2 W Colorado Bl
- City Thai  
48 S Fair Oaks Av
- Equator Cafe  
22 Mills Pl
- Father Nature's Lavash Wraps  
17 De Lacey Av
- Gyu-Kaku  
70 W Green St
- Intelligentisa Coffee & Tea  
55 E Colorado Bl
- Islands  
330 E Colorado Bl
- King Taco  
45 N Arroyo Pkwy
- La Luna Negra  
44 W Green St
- Lucky Baldwins Pub & Cafe  
17 S Raymond Av
- Mi Piace  
25 E Colorado Bl
- Naga Naga Ramen  
49 E Colorado Bl
- Noodle World  
24 W Colorado Bl
- Saigon Noodle Restaurant  
28 N Raymond Av
- Tibet Nepal House  
36 E Holly St
- Wokcano  
33 S Fair Oaks Av
- Yard House  
330 E Colorado Bl

### ENTERTAINMENT

- The 35er  
12 E Colorado Bl
- Arclight Pasadena  
336 E Colorado Bl
- Jake's Billiards  
38 W Colorado Bl

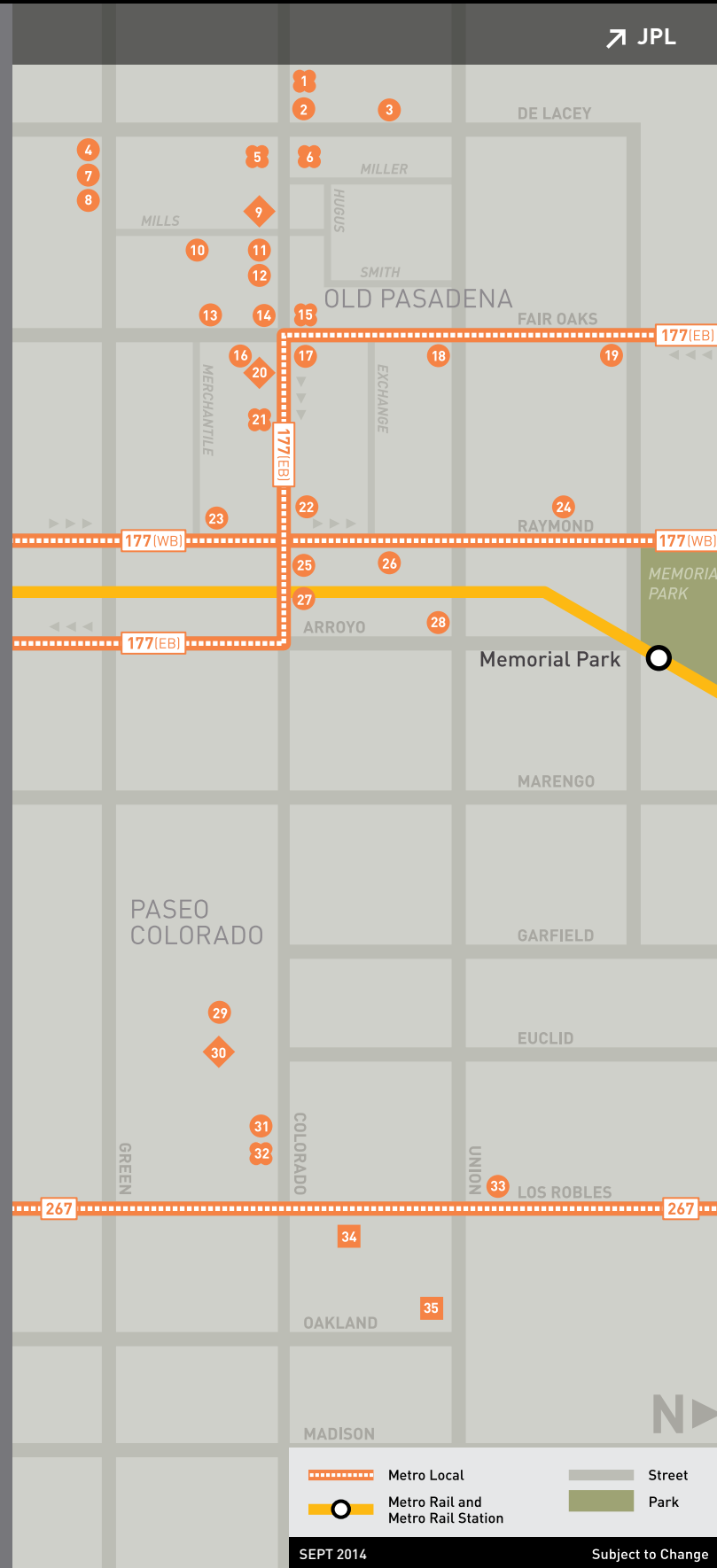
### MUSEUMS

- Pacific Asia Museum  
46 N Los Robles Av
- Pasadena Museum of California Art  
490 E Union St

### SHOPPING

- American Apparel  
46 W Colorado Bl
- Apple Store  
54 W Colorado Bl
- H & M  
60 W Colorado Bl
- Barnes & Noble  
111 W Colorado Bl
- Urban Outfitters  
139 W Colorado Bl
- Gap  
61 W Colorado Bl
- J Crew  
3 W Colorado Bl
- Macy's  
400 E Colorado Bl
- Vans  
28 E Colorado Bl

## Old Pasadena Inset



## Caltech/JPL



Think global.  
Go Local.  
Go Metro.



A Metro bus line is always around the corner at Caltech and JPL, making it easy to get from campus to Old Pasadena, Downtown and more.

For information on Metro bus and rail lines, visit [metro.net/caltech\\_jpl](http://metro.net/caltech_jpl).

Explore new ways to save money, save time and be good to the planet.

Every time you ride a Metro bus or rail line, you make a dent in air pollution and help curb global warming.

So think global, go local – Metro Local – and make a difference. **Go Metro.**



## Destinations to/from Caltech and JPL



### Metro Rail Destinations

#### A UNION STATION

- > Olvera Street
- > Philippe The Original  
1001 N Alameda St

#### B CHINATOWN

- > Chinatown Restaurants
- > Chung King Road Art Galleries

#### C LINCOLN/CYPRESS

- > LA River Center and Gardens  
570 W Av 26

#### D HERITAGE SQUARE

- > Heritage Square Museum  
300 Homer St

#### E HIGHLAND PARK

- > Folliero's Italian Food & Pizza  
5566 N Figueroa St

#### G FILLMORE

- > Good Girl Dinette  
110 N Ave 56
- > Mr. T's Bowl  
5621 1/2 N Figueroa St

#### F SOUTH PASADENA

- > Buster's Ice Cream & Coffee Shop  
1006 Mission St
- > Firefly Bistro  
1009 El Centro St
- > Heirloom Café and Bakery  
807 Meridian Av
- > Kaldi Coffee and Tea  
1019 El Centro St
- > Nicole's Gourmet Foods  
921 Meridian Av
- > Señor Fish  
618 Mission St

#### H DEL MAR

- > Houston's  
320 S Arroyo Pkwy
- > La Grande Orange Café  
260 S Raymond Av
- > Pasadena Civic Auditorium  
300 E Green St
- > Pasadena Ice Skating Rink  
310 E Green St

#### I LAKE

- > Ice House Comedy Club  
24 N Mentor Av
- > South Lake Avenue Shops and Restaurants

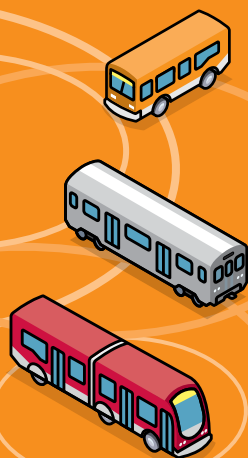
#### J SIERRA MADRE VILLA

- > 300 Pasadena  
3545 E Foothill Bl
- > Chipotle  
3409 E Foothill Bl
- > Hastings Ranch Shops and Restaurants

## It's easy to Go Metro.

- 1 Find \$1.75
- 2 Get on and pay\*
- 3 Ride

\*Better yet, buy a student discount pass. Visit [metro.net/caltech\\_jpl](http://metro.net/caltech_jpl) for more information.

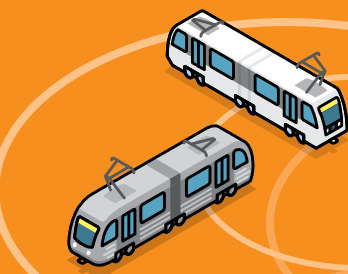


## Bike Tips

- > It's easy to start or complete your trip on Metro by bike.
- > Metro buses have bike racks located at the front of the bus.
- > You can find bike racks and lockers at many Metro Rail and Orange Line Stations.

For more information, visit [metro.net/bikes](http://metro.net/bikes).

Effective 9/14.  
Information subject to change.



## It's a fact...

- > Walking or using mass transit two days a week can reduce greenhouse gas emissions by an average of 1,600 pounds per year and save you a bundle at the pump.
- > For every mile traveled, public transportation uses about half the fuel consumed by automobiles and about one-third of that used by SUVs and light trucks.