

Destinations

DINING

- 9 Border Grill
445 S Figueroa St
- 26 Bottega Louie
700 S Grand Av
- 32 BottleRock
1050 S Flower St, Ste 167
- 25 Chipotle
601 W 7th St
- 22 Clifton's Cafeteria
648 S Broadway
- 21 Cole's
118 E 6th St
- 17 Daily Grill
612 S Flower St
- 31 El Cholo
1037 S Flower St
- 14 Famima!!
525 W 6th St
- 7 Grand Central Market
317 S Broadway
- 9 Johnny Rockets
445 S Figueroa St
- 11 Lemonade
505 S Flower St
- 10 Mendocino Farms
444 S Flower St
- 16 Nickel Diner
524 S Main St
- 27 The Original Pantry Café
877 S Figueroa St
- 18 Urbano Pizza Bar
630 W 6th St, Ste 116
- 23 Wokcano
800 W 7th St

ENTERTAINMENT

- 35 LA Convention Center
1201 S Figueroa St
- 30 L.A. LIVE
800 W Olympic Bl
- Club Nokia
- Conga Room
- ESPN Zone
- The Grammy Museum
- Lucky Strike Lanes
- Nokia Theatre L.A. LIVE
- Regal Cinemas L.A. LIVE Stadium 14
- 1 Music Center
135 N Grand Av
- 29 Orpheum Theatre
842 S Broadway
- 34 STAPLES Center
1111 S Figueroa St
- 2 Walt Disney Concert Hall
111 S Grand Av

LIBRARY

- 13 Los Angeles Central Library
630 W 5th St

NIGHTLIFE

- 20 The Association
110 E 6th St
- 19 Casey's Irish Pub
613 S Grand Av
- 5 The Edison
108 W 2nd St
- 8 La Cita
336 S Hill St
- 33 The Mayan
1038 S Hill St
- 15 The Perch
448 S Hill St, 13th Fl
- 4 Redwood Bar & Grill
316 W 2nd St
- 12 Rooftop Bar at The Standard
550 S Flower St

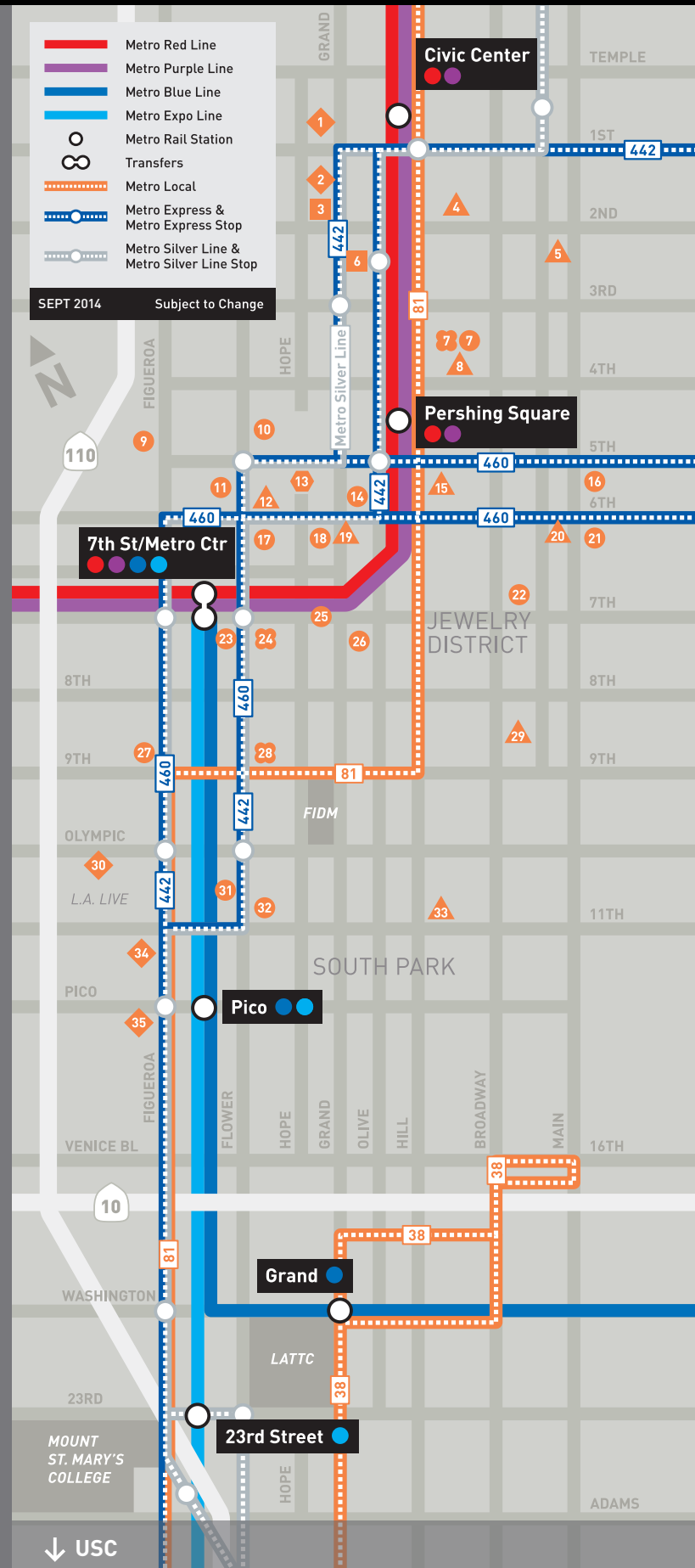
MUSEUMS

- 6 MOCA
250 S Grand Av
- 3 REDCAT
631 W 2nd St

SHOPPING

- 7 Grand Central Market
317 S Broadway
- 24 Macy's Plaza
750 W 7th St
- 28 Ralphs
645 W 9th St

Downtown LA Inset



USC



Think global.
Go Local.
Go Metro.



A Metro bus or rail line is always around the corner at USC, making it easy to get from campus to Downtown, Culver City, Hollywood and more.

For information on Metro bus and rail lines, visit metro.net/usc.

Explore new ways to save money, save time and be good to the planet.

Every time you ride a Metro bus or rail line, you make a dent in air pollution and help curb global warming.

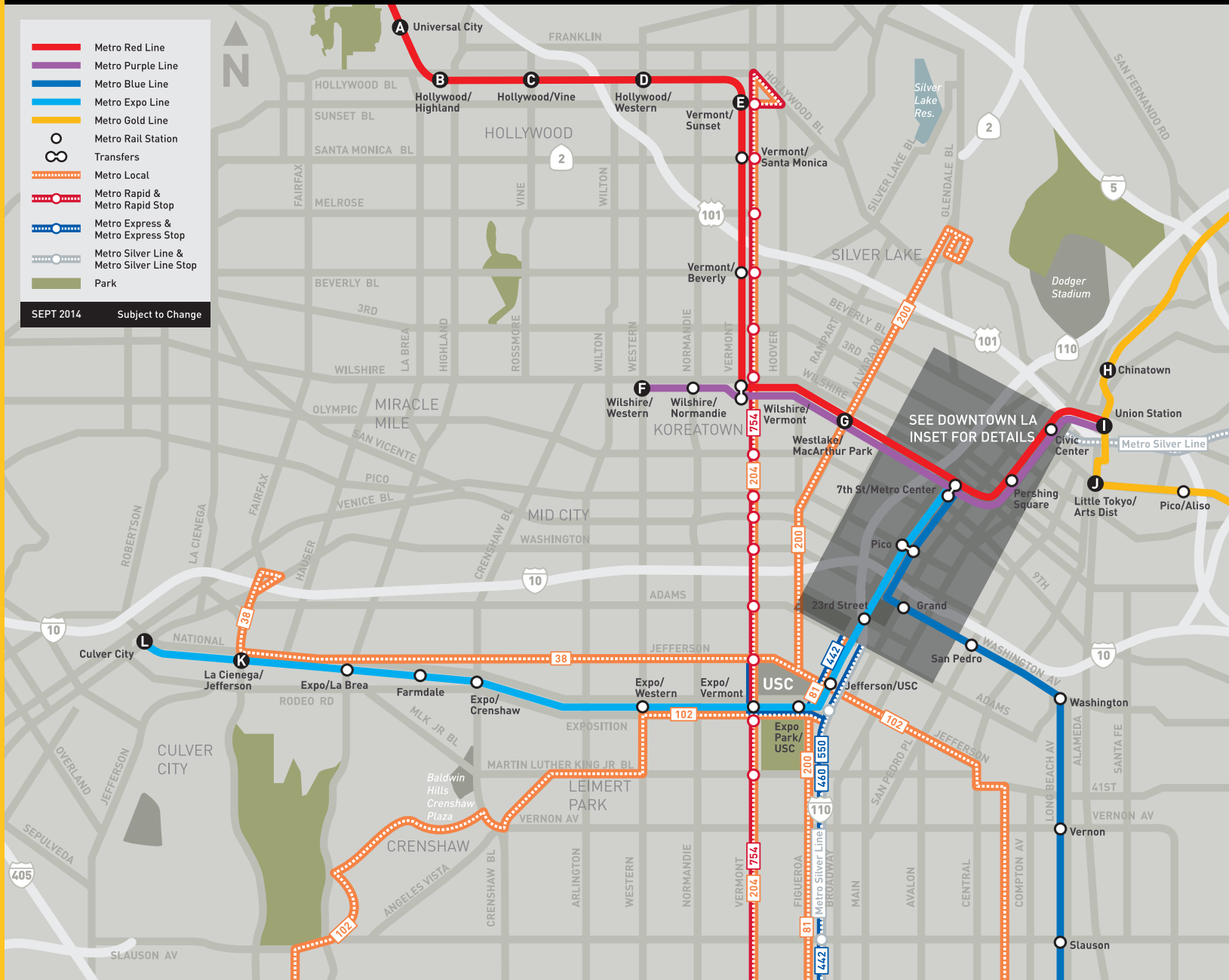
So think global, go local – Metro Local – and make a difference. **Go Metro.**



Destinations to/from USC

- Metro Red Line
- Metro Purple Line
- Metro Blue Line
- Metro Expo Line
- Metro Gold Line
- Metro Rail Station
- ∞ Transfers
- ⋯ Metro Local
- Metro Rapid & Metro Rapid Stop
- Metro Express & Metro Express Stop
- Metro Silver Line & Metro Silver Line Stop
- Park

SEPT 2014 Subject to Change



Metro Rail Destinations

A UNIVERSAL CITY

- > Universal CityWalk
- > Universal Studios

B HOLLYWOOD/HIGHLAND

- > Egyptian Theatre
6712 Hollywood Bl
- > Grauman's Chinese Theatre
6925 Hollywood Bl
- > Hollywood & Highland Center
- > Hollywood Walk of Fame

C HOLLYWOOD/VINE

- > Amoeba Music
6400 W Sunset Bl
- > ArcLight Cinemas
6360 W Sunset Bl

D HOLLYWOOD/WESTERN

- > Avalon Hollywood
1735 Vine St
- > Pantages Theatre
6233 Hollywood Bl

E VERMONT/SUNSET

- > Little Armenia
- > Thai Town
- > Umami Burger
4655 Hollywood Bl

F WILSHIRE/WESTERN

- > Koreatown
- > The Wiltern
3790 Wilshire Bl

G WESTLAKE/MACARTHUR PARK

- > Langer's
704 S Alvarado St

H CHINATOWN

- > Chung King Road Art Galleries

I UNION STATION

- > Olvera Street
- > Philippe the Original
1001 N Alameda St

J LITTLE TOKYO/ARTS DIST

- > The Geffen Contemporary at MOCA
152 N Central Av
- > Japanese American National Museum
100 N Central Av

K LA CIENEGA/JEFFERSON

- > Ballona Creek Bike Path
Enter from Jefferson Bl
- > Target
3535 S La Cienega Bl

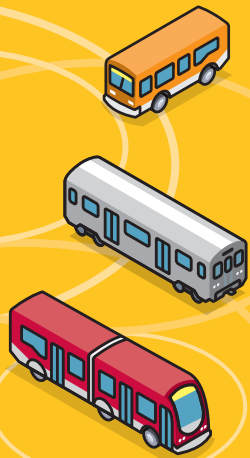
L CULVER CITY

- > Father's Office
3229 Helms Av
- > Kirk Douglas Theatre
9820 Washington Bl
- > Santa Monica Pier
Take Metro Rapid 733

It's easy to Go Metro.

- 1 Find \$1.75
- 2 Get on & pay*
- 3 Ride

* Better yet, buy a student discount pass. Visit metro.net/usc for more information.

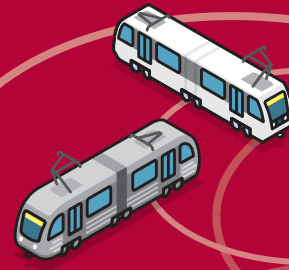


Bike Tips

- > It's easy to start or complete your trip on Metro by bike.
- > Metro buses have bike racks located at the front of the bus.
- > You can find bike racks and lockers at many Metro Red and Orange Line Stations.

For more information, visit metro.net/bikes.

Effective 9/14.
Information subject to change.



It's a fact...

- > Walking or using mass transit two days a week can reduce greenhouse gas emissions by an average of 1,600 pounds per year and save you a bundle at the pump.
- > The average commuter who rides public transportation just three days a week would save roughly \$1,000 on fuel over the course of a year.

For Metro Silver Line fare information check metro.net/silverline.