

Destinations

ATTRACTIONS

- 31 Santa Monica Pier

NIGHTLIFE

- 5 Cabo Cantina
1240 3rd St
- 26 Copa d'Oro
217 Broadway
- 11 Barney's Beanery
1351 3rd St
- 28 Bodega Wine Bar
814 Broadway
- 15 Britannia Pub
318 Santa Monica Blvd
- 19 Harvelle's Blues Club
1432 4th St

DINING

- 28 Bay Cities Italian Deli & Bakery
1517 Lincoln Blvd
- 22 Benihana
1447 4th St
- 21 Border Grill
1445 4th St
- 20 Bucca di Beppo
1442 2nd St
- 2 California Pizza Kitchen
210 Wilshire Blvd
- 32 Cha Cha Chicken
1906 Ocean Ave
- 1 El Cholo
1025 Wilshire Blvd
- 30 Fritto Misto Italian Café
601 Colorado Ave
- 23 Jinky's Café
1447 2nd St
- 25 Joe's Pizza
111 Broadway
- 8 Johnny Rockets
1322A 3rd St
- 16 Mercado
1416 4th St
- 13 The Misfit Restaurant & Bar
225 Santa Monica Blvd
- 3 Musha Restaurant
424 Wilshire Blvd
- 27 Pinkberry
1456 3rd St
- 3 PF Chang's
326 Wilshire Blvd

- 24 Pono Burger
829 Broadway
- 18 Real Food Daily
514 Santa Monica Blvd
- 14 Sake House by Hiraki
401 Santa Monica Blvd
- 4 Superfood Cafe
530 Wilshire Blvd
- 6 Tender Greens
201 Arizona Ave
- 29 Umami Burger
500 Broadway
- 4 Vanilla Bake Shop
512 Wilshire Blvd
- 3 Wahoo's Fish Taco
418 Wilshire Blvd
- 17 Wokano
1413 5th St
- 12 Ye Olde King's Head Pub & Restaurant
116 Santa Monica Blvd

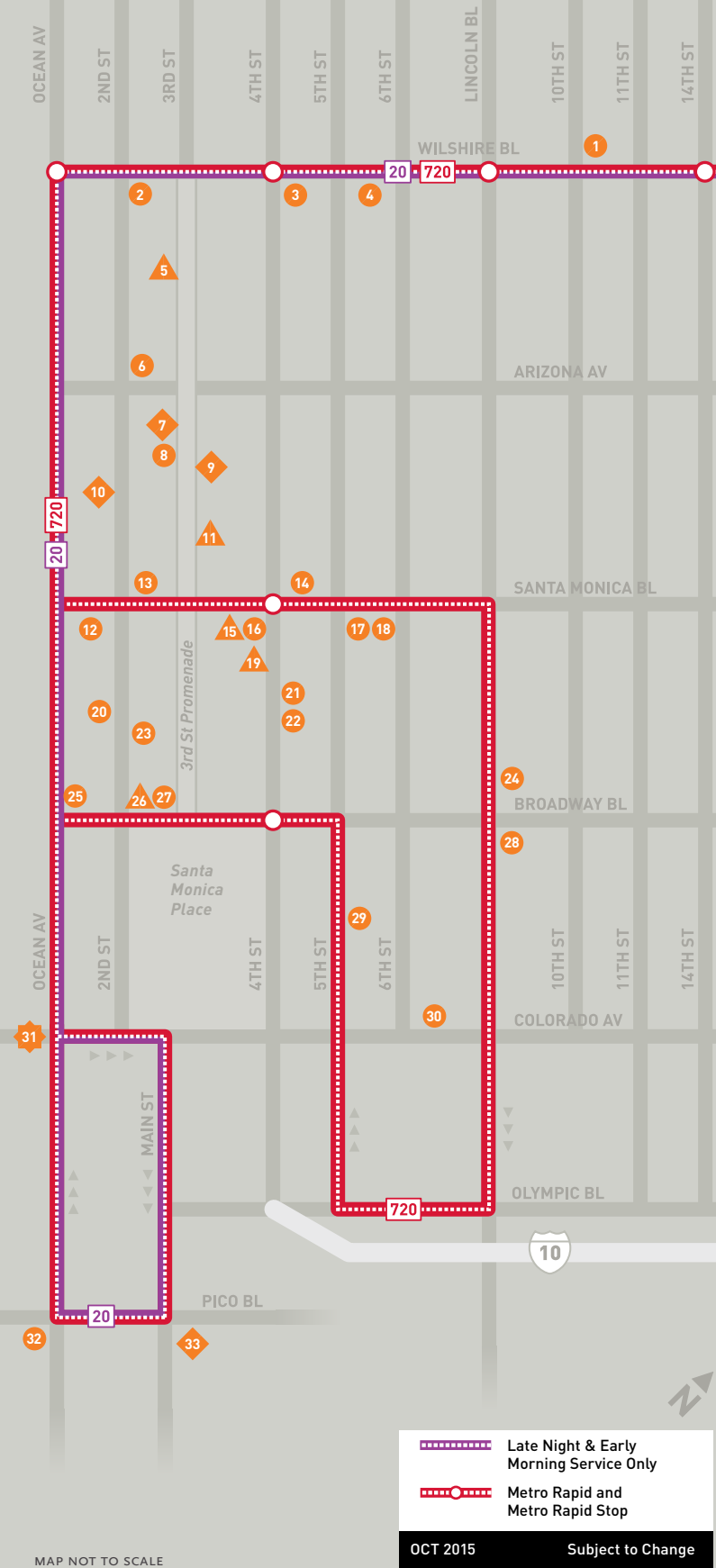
ENTERTAINMENT

- 19 AMC Broadway 4
1441 3rd St
- 7 AMC Theaters Santa Monica 7
1310 3rd St
- 32 Bowlmor Santa Monica
235 Pico Blvd
- 10 Monica Film Center
1332 2nd St
- 9 M.I.'s Westside Comedy Theater
1323-A 3rd St

SHOPPING

- 3rd Street Promenade Shops
- Santa Monica Place
- > Bloomingdale's
- > Nordstrom

Santa Monica Detail



UCLA



Explore new ways to save money, save time and be good to the planet.

Every time you ride a Metro bus or rail line, you make a dent in air pollution and help curb global warming.

So think global, go local – Metro Local – and make a difference. **Go Metro.**

A Metro bus line is always around the corner at UCLA, making it easy to get from campus to Santa Monica, Hollywood and more.

For information on Metro bus and rail lines, visit metro.net/ucla.



Late Night & Early Morning Service Only
 Metro Rapid and Metro Rapid Stop
 OCT 2015 Subject to Change

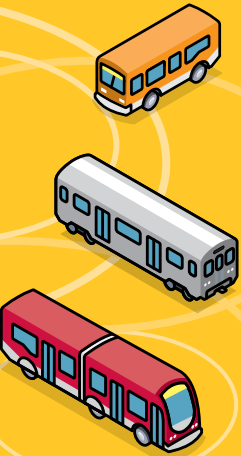
→ UCLA

Destinations to/from UCLA

It's easy to Go Metro.

- 1 Find \$1.75
- 2 Get on & pay*
- 3 Ride

* Better yet, buy a student discount pass. Visit metro.net/ucla for more information.

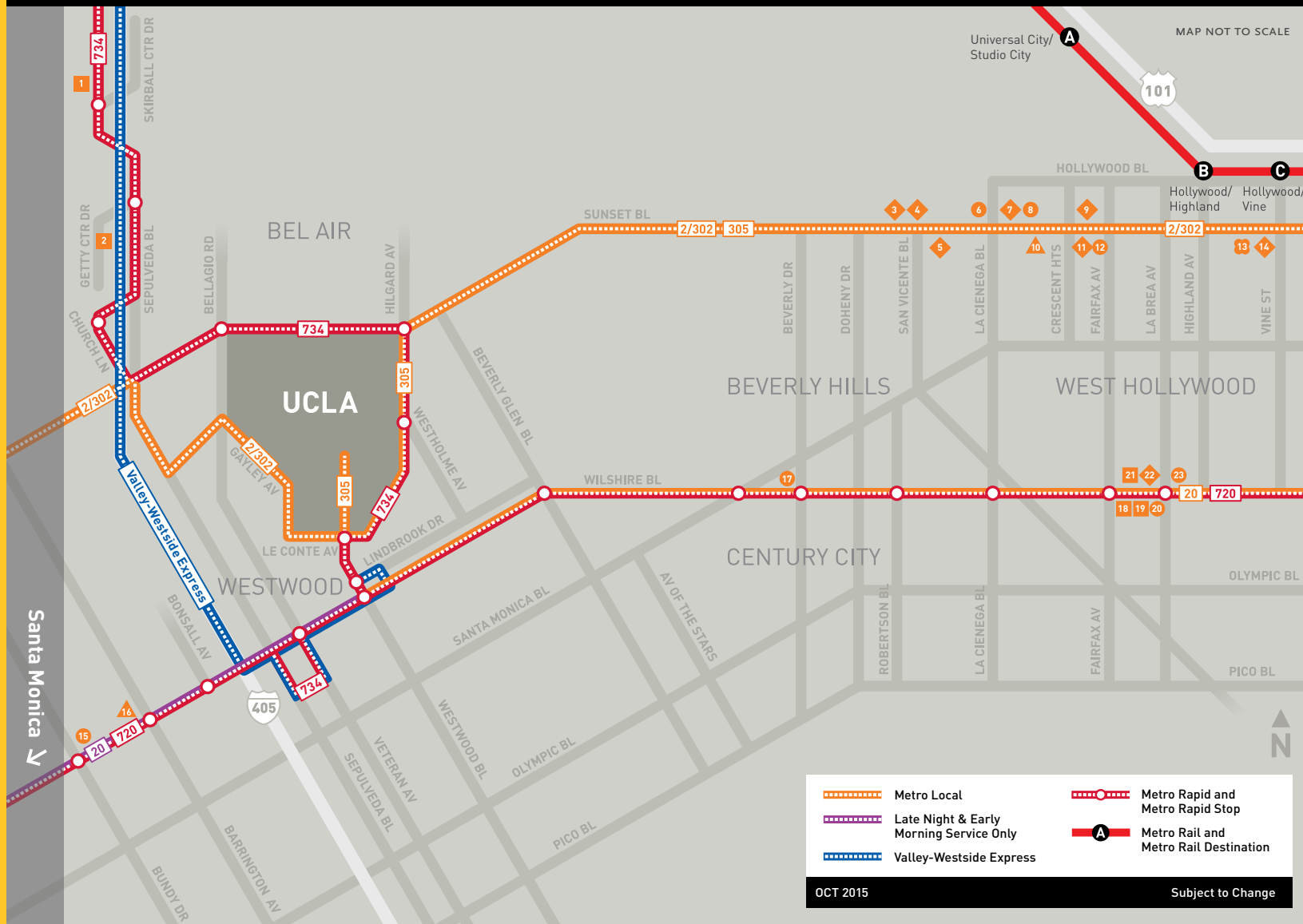


Bike Tips

- > It's easy to start or complete your trip on Metro by bike.
- > Metro buses have bike racks located at the front of the bus.
- > You can find bike racks and lockers at many Metro Rail and Orange Line Stations.

For more information, visit metro.net/bikes.

Effective 10/15.
Information subject to change.



NIGHTLIFE

- 16 Brū Haus
11831 Wilshire Blvd
- 10 The Den on Sunset
8226 W Sunset Blvd
- 16 Q's Billiard Club
11835 Wilshire Blvd
- 10 The Standard Hotel Lounge
8300 W Sunset Blvd

DINING

- 8 Carney's Restaurant
8351 W Sunset Blvd
- 23 Genwa Korean BBQ
5115 Wilshire Blvd
- 12 The Griddle Cafe
7916 W Sunset Blvd
- 15 Literati Cafe
12081 Wilshire Blvd
- 23 Luna Park
672 S La Brea Av
- 6 Mel's Drive-In
8585 W Sunset Blvd

- 6 Roppongi Asian Tapas Bar & Sushi
8535 W Sunset Blvd
- 8 Saddle Ranch Chop House
8371 W Sunset Blvd
- 17 Sprinkles Cupcakes
9635 S Santa Monica Blvd
- 20 Yuko Kitchen
5484 Wilshire Blvd

ENTERTAINMENT

- 14 Arclight Hollywood
6360 W Sunset Blvd
- 7 The Comedy Store
8433 W Sunset Blvd
- 22 The El Rey Theatre
5515 Wilshire Blvd
- 9 The Laugh Factory
8001 W Sunset Blvd
- 3 The Roxy
9009 W Sunset Blvd
- 11 Sundance Sunset 5 Cinemas
8000 W Sunset Blvd

- 5 Viper Room
8852 W Sunset Blvd
- 4 Whisky A Go-Go
8901 W Sunset Blvd

MUSEUMS

- 19 Craft & Folk Art Museum
5814 Wilshire Blvd
- 2 The Getty Center
1200 Getty Center Dr
- 21 LACMA
5905 Wilshire Blvd
- 21 Page Museum/La Brea Tar Pits
5801 Wilshire Blvd
- 18 Petersen Automotive Museum
6060 Wilshire Blvd
- 1 Skirball Cultural Center
2701 N Sepulveda Blvd

SHOPPING

- 13 Amoeba Music
6400 W Sunset Blvd

A UNIVERSAL CITY/STUDIO CITY

- > Universal CityWalk
- > Universal Studios

B HOLLYWOOD/HIGHLAND

- > Egyptian Theatre
6712 Hollywood Blvd
- > El Capitan Theatre
6838 Hollywood Blvd
- > TCL Chinese Theatre
6925 Hollywood Blvd
- > Hollywood & Highland Center
- > Hollywood Walk of Fame

C HOLLYWOOD/VINE

- > Avalon Hollywood
1735 Vine St
- > Hollywood Pantages Theatre
6233 Hollywood Blvd

It's a fact...

- > For every mile traveled, public transportation uses about half the fuel consumed by automobiles and about one-third of that used by SUVs and light trucks.
- > If your daily commute is just 10 miles each way and you normally drive a 20-mpg vehicle, you would save 236 gallons of gas each year by opting to use transit.

