



## Link Union Station (Link US) Project

Open House

September 26, 2018



# Major Project Components



1. New rail communication, signals, and tracks
2. New run-through tracks over US-101 and new loop track
3. New expanded passenger concourse, platforms, escalators, and elevators
4. Accommodation of HSR with a new lead track and optimized throat and rail yard

# Anticipated Project Benefits

What will Link US Provide?

IMPROVE INTRASTATE,  
INTERCITY & LOCAL  
TRANSIT CONNECTIVITY



HSR; Metrolink, Amtrak,  
Metro rail; Metro  
and municipal bus  
systems; ridesharing

ENHANCE PASSENGER  
EXPERIENCE



New concourse,  
retail and other  
amenities and new  
expanded platforms

IMPROVE REGIONAL  
CONNECTIVITY



One-seat rides to key  
destinations in  
Southern California

REDUCE TRAIN  
IDLING TIMES



Shorter wait times,  
fuel savings,  
emissions reductions

FUTURE  
DEVELOPMENT



Opportunity for  
transit-oriented  
development

GENERATE 4,500  
JOBS PER YEAR



During five-year  
construction period

IMPROVE  
PEDESTRIAN ACCESS



Enhanced mobility options  
and safety features

INCREASE RAIL  
SERVICE CAPACITY



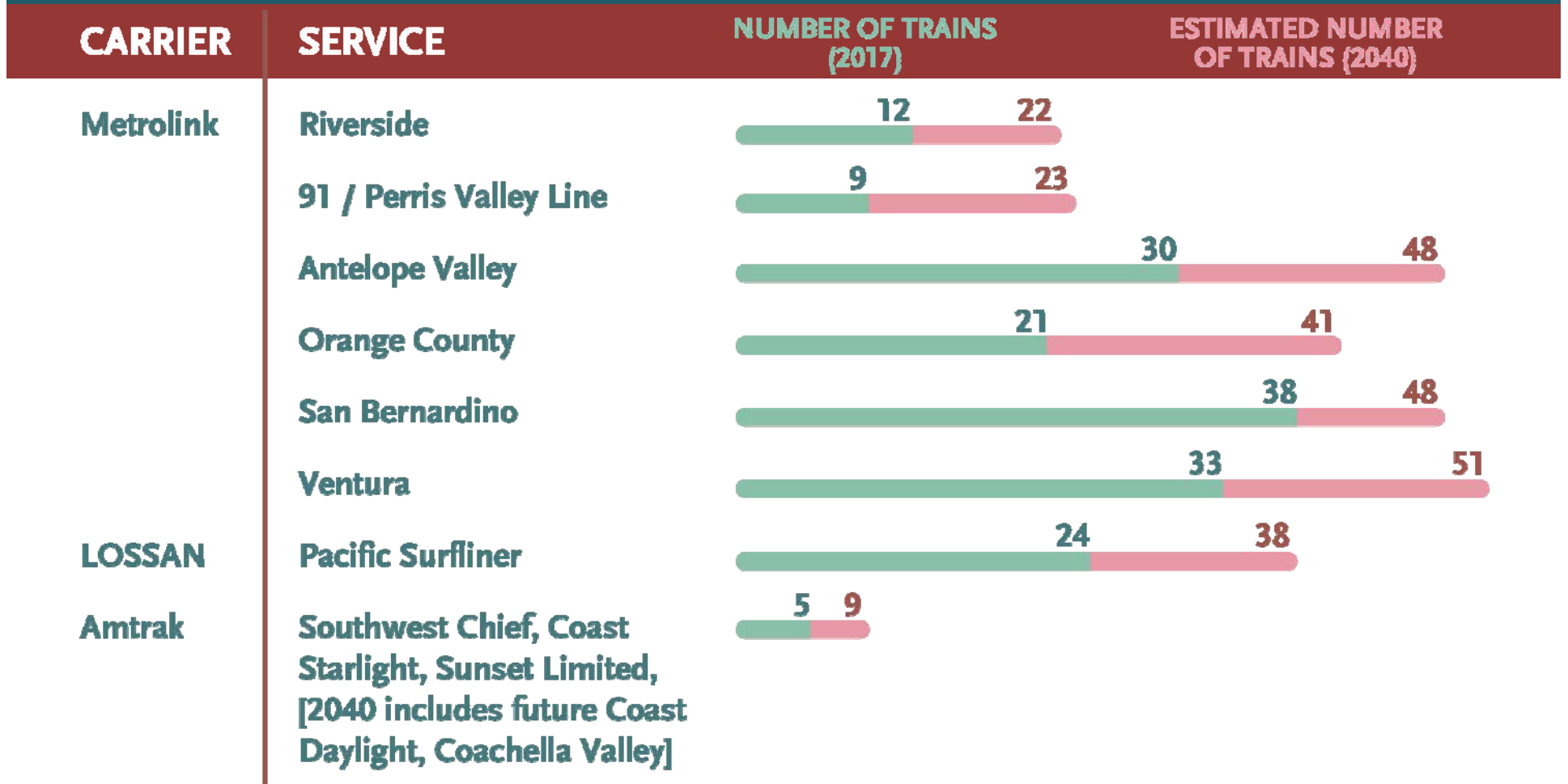
Accommodate  
future demand

IMPROVE US-101 &  
LOCAL ROADWAYS



Updated design and  
enhanced safety

# Project Benefits: Meeting Future Demand



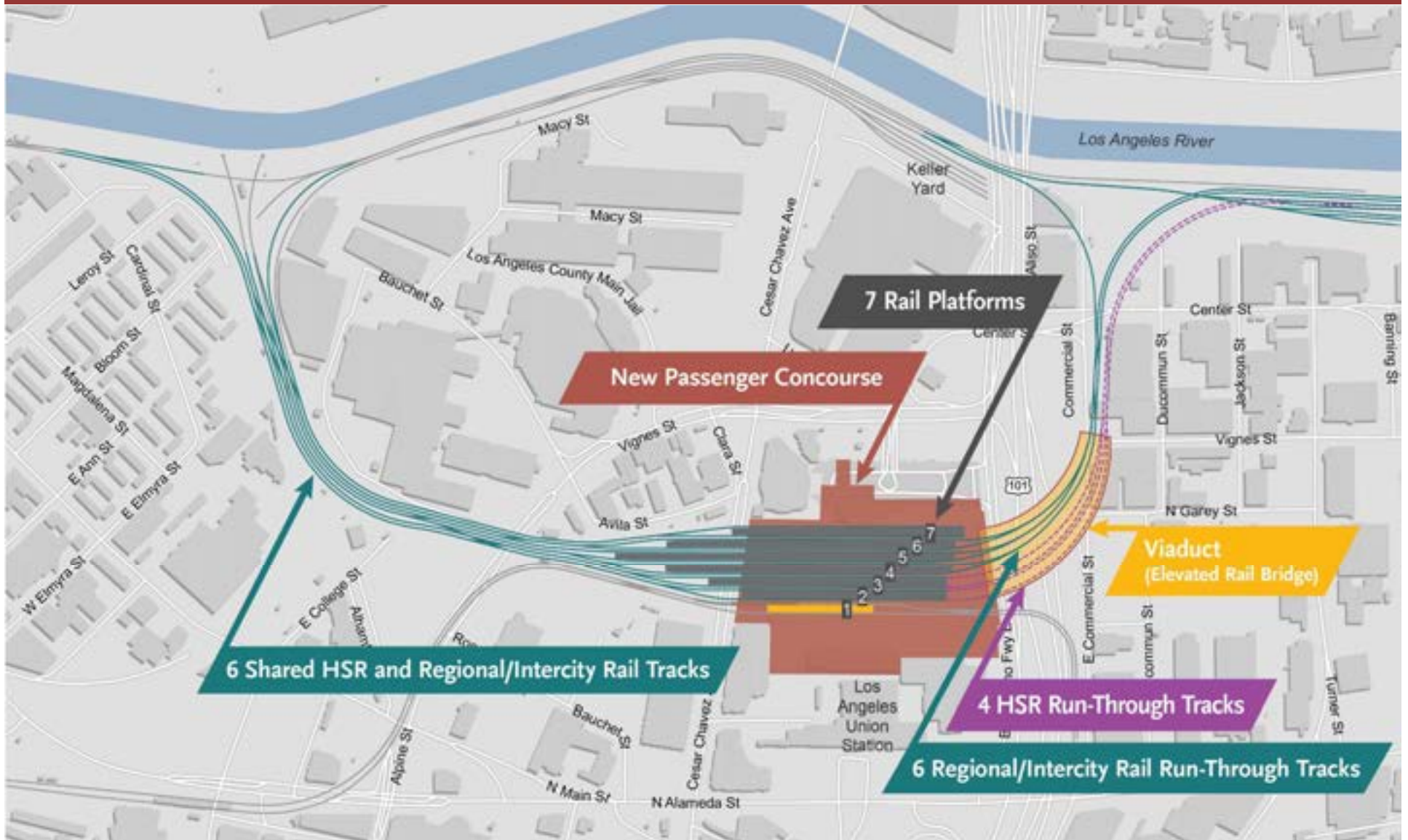
Increased regional rail from 172 to 280 trains per day – up to 63%



*Note: 2040 train volumes are preliminary estimates consistent with the Metrolink 2025 Strategic Plan*

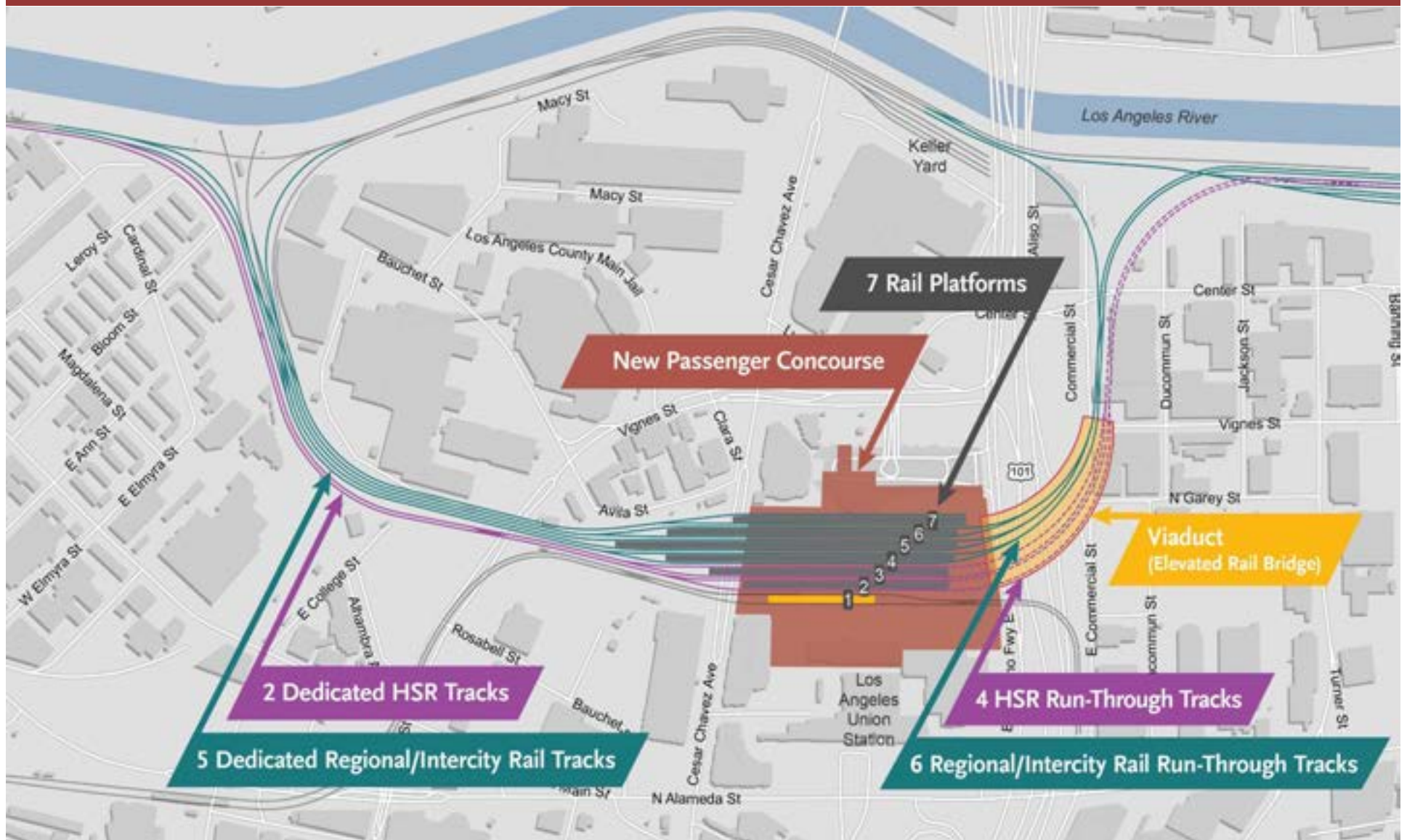
# Build Alternatives

Build Alternative 1 - Up to 10 New Run-Through Tracks with Shared Tracks



# Build Alternatives

Build Alternative 2 - Up to 10 New Run-Through Tracks with Dedicated Tracks



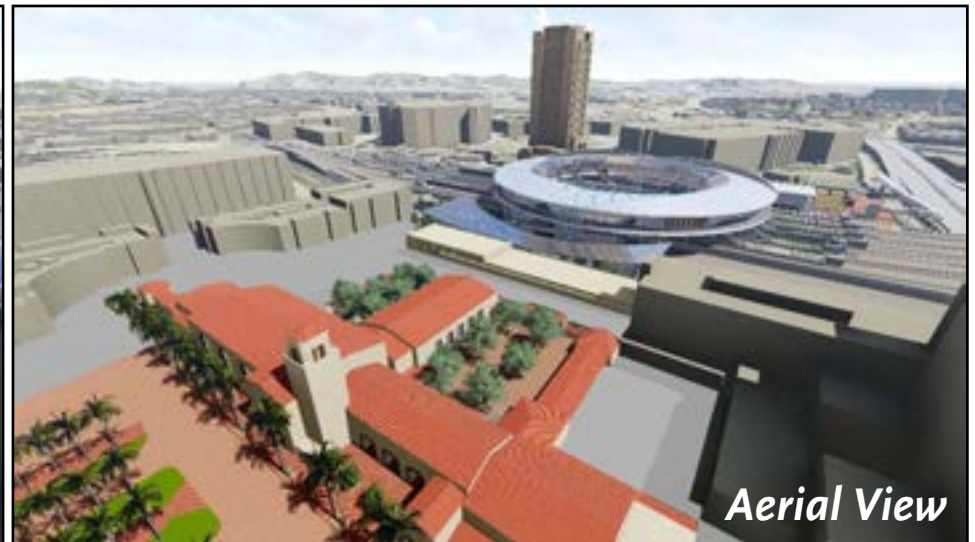
# Expanded Passenger Concourse

Design Options (*Conceptual Renderings*)

At-Grade Option



Above-Grade Option



The New Passenger Concourse will:

1. Increase passenger capacity, improve connectivity, accessibility and safety
2. Provide transit-related retail, food, and other amenities
3. Help create a world-class transit station to improve passenger experience

# Expanded Passenger Concourse

At-Grade Option (Conceptual Renderings)



*Patsaouras Bus Plaza*



*West Plaza*



*Platform*



*Passenger Concourse*



# Expanded Passenger Concourse

Above-Grade Option (*Conceptual Renderings*)





# Construction Phasing Overview

## Phase A: Commercial and Center Street

### Phase A

#### PHASE 2 – COMMERCIAL AND CENTER ST

1. R/W Acquisition
2. Utility Relocation at Commercial & Center St
3. Commercial & Center St Improvements



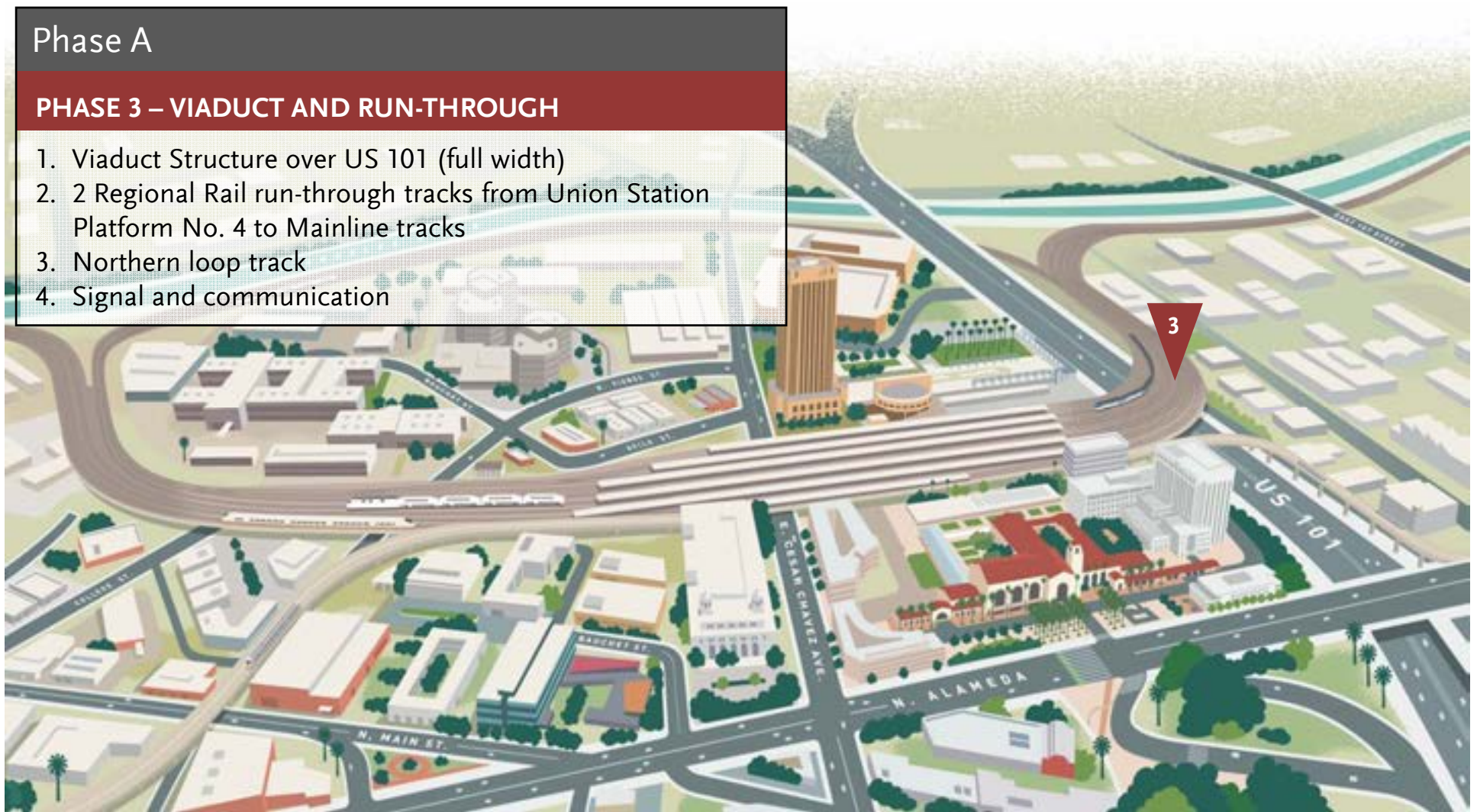
# Construction Phasing Overview

## Phase A: Viaduct and Run-Through

### Phase A

#### PHASE 3 – VIADUCT AND RUN-THROUGH

1. Viaduct Structure over US 101 (full width)
2. 2 Regional Rail run-through tracks from Union Station Platform No. 4 to Mainline tracks
3. Northern loop track
4. Signal and communication



# Construction Phasing Overview

## Phase B: Rail Yard/Concourse Area

### Phase B

#### PHASE 4 – RAIL YARD/CONCOURSE AREA

1. Raising of the rail yard including new platforms and tracks
2. New passenger concourse including a new open plaza (West Plaza)



# Funding Update: Phase A

FUNDING SOURCE	PHASE 1, 2, & 3
State Proposition 1A/ High Speed Rail Bonds for 1 platform and 2 tracks	\$423M
TIRCP	\$398M
Other	\$129M
<b>TOTAL</b>	<b>\$950M</b>

## Phase B of the Link US Infrastructure Project remains to be unfunded:

- \$1.15 Billion (above-grade option)
- \$1.5 Billion (at-grade option)

California High Speed Rail Authority released draft 2018 business plan for public comment.

The draft plan includes up to **\$423 million** for Link US.

As part of the 2018 Transit and Intercity Rail Capital Program, CalSTA awarded \$875 million to Metrolink's SCORE program.

Includes **\$398 million** for Link US.

# CEQA Proposed Project

Reasons why Alt. 1 and Design Option B is the CEQA proposed project

## Shared Tracks

1. Avoids direct impacts to William Mead Homes (Section 106; Environmental Justice; Section 4(f) property under NEPA)

## Above-Grade Concourse

1. The above-grade option costs approximately \$500 million less than the at-grade option
2. Requires less soil export, which potentially reduces short-term traffic and air quality effects during construction
3. Requires less ground disturbance, which potentially reduces effects to buried archaeological resources and effects associated with hazardous materials if present



# Next Steps: CEQA Proposed Project

Staff Recommendation - Subject to Metro Board Approval

1. Draft environmental document will evaluate all alternatives **equally**
2. Circulation of Draft Environmental Document tentatively anticipated in **December 2018**
3. Based on preliminary findings, Metro staff will request approval from the Metro Board to identify, in the Draft EIR/EIS, Build Alternative 1 with Design Option B as the “CEQA Proposed Project” at the December Board meeting



# Provide comments to the CEQA proposed project

## Options for sending comments

 213.922.2524

 *LinkUnionStation@metro.net*

 *metro.net/linkus*

 *facebook.com/regionalrail*

# Project Development Phases

We Are Here

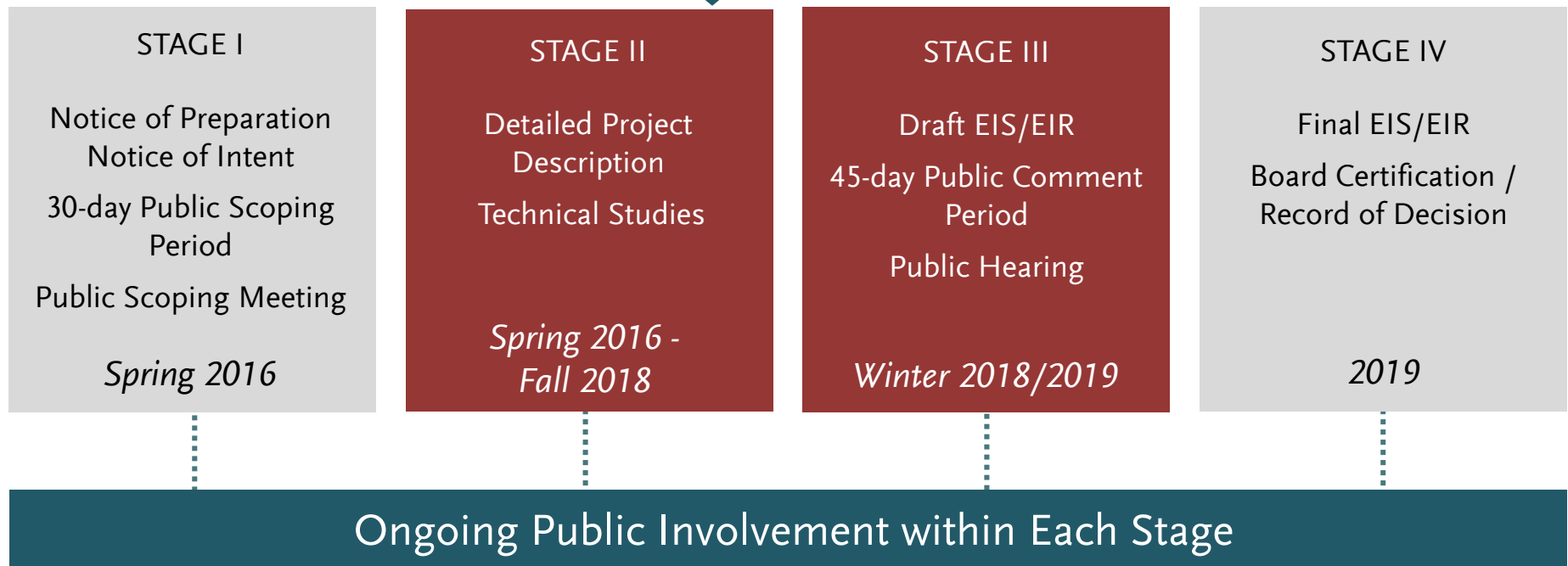


Ongoing Public Involvement within each Project Development Phase

# Environmental Review Timeline

CEQA/NEPA

We Are Here



*\*Subject to Change*

# Draft Environmental Document

## Environmental Topics



### Chapters

- Ch. 3.2 Land Use & Planning
- Ch. 3.3 Transportation
- Ch. 3.4 Visual Quality & Aesthetics
- Ch. 3.5 Air Quality & Global Climate Change
- Ch. 3.6 Noise & Vibration
- Ch. 3.7 Biological & Wetland Resources
- Ch. 3.8 Floodplains, Hydrology & Water Quality
- Ch. 3.9 Geology, Soils & Seismicity
- Ch. 3.10 Hazardous Waste & Materials
- Ch. 3.11 Public Utilities & Energy
- Ch. 3.12 Cultural & Paleontology
- Ch. 3.13 Parks, Community Services, Public Facilities
- Ch. 3.14 Economic & Fiscal Impacts
- Ch. 3.15 Safety & Security
- Ch. 3.16 Socio-Economics & Communities Affected

# Draft Environmental Document Circulation

Public Release Upcoming in late 2018



## *45-Day Public Review Period*

**Copy of Draft EIS/EIR will be made available at these proposed locations:**

1. LA Central Public Library – DTLA
2. Lincoln Heights Branch Library
3. Chinatown Branch Library
4. Little Tokyo Branch Library
5. Benjamin Franklin Library in Boyle Heights
6. LA Union Station/Metro Library

**Formal Comment Submittal via:  
Email, mail, web, comment card, court reporter**

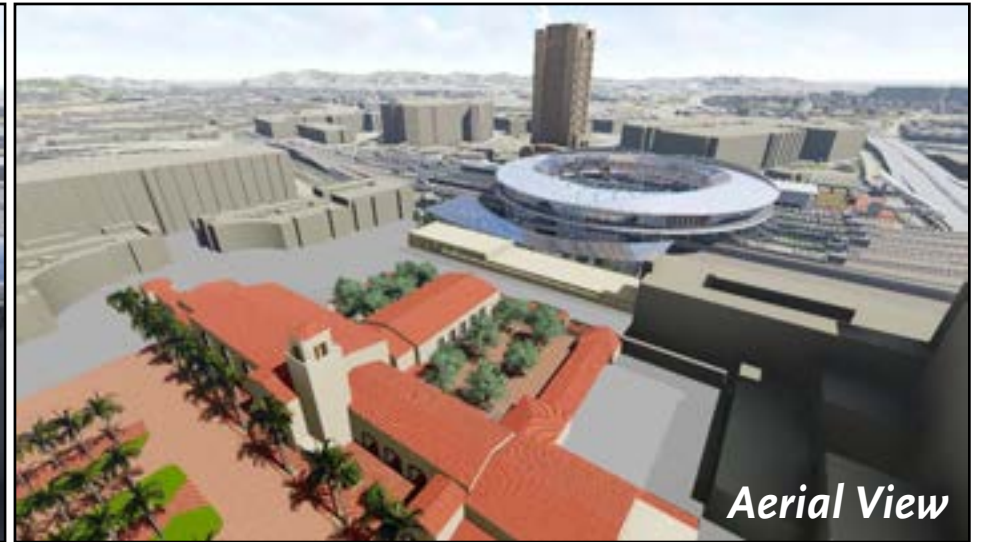


# LA Union Station Concept Videos

1. Close your eyes and imagine what a world class transit station could be
2. The following videos are meant to inspire creativity for a world class transit station at Union Station
3. Some elements shown are not funded and are not part of Link US. Future development shown will be in later phases.
4. Visual representation of concourse and other elements are for illustrative purpose and conceptual only and it is subject to change

# Expanded Passenger Concourse

## Concept Videos



*\*Note: Visual representation of concourse and associated videos are illustrative and conceptual only and subject to change.*

# Thank You – Stay Involved

## Link US Contact Information

*Jeanet Owens*, P.E., Metro, Senior Executive Officer, Regional Rail

*Vincent Chio*, P.E., Metro, Director, Regional Rail

*Danielle Valentino*, Metro, Community Relations Manager



213.922.2524



*LinkUnionStation@metro.net*



*metro.net/linkus*



*facebook.com/regionalrail*

