

# Patsaouras Plaza Bus Station

## Quarterly Service Council Meet & Confer– January 2015



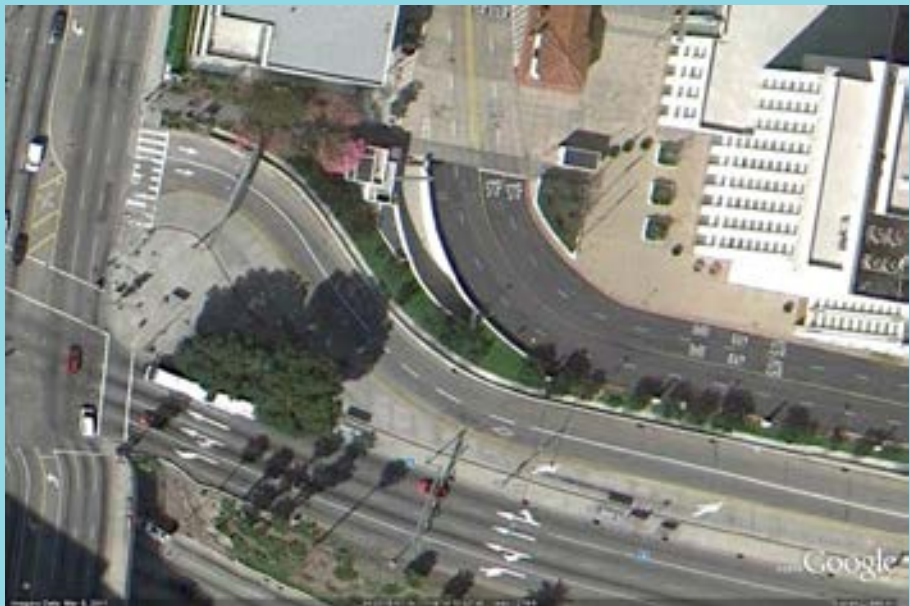
# Patsaouras Plaza Bus Station

## Project Context



# Patsaouras Plaza Bus Station

## Project Context



# Patsaouras Plaza Bus Station

## Project Description



- Relocates patron boarding station currently on North Alameda
- Improves vertical and horizontal pedestrian circulation
- Provides direct connection to Union Station



# Patsaouras Plaza Bus Station

## Project Description



- Partially funded by \$10 million FTA Discretionary Grant
- Public Art “Wind Bridge” by artist Ned Kahn
- Will serve Metro, Foothill Transit, and other operators



# Patsaouras Plaza Bus Station

## Design Models and Perspectives



# Patsaouras Plaza Bus Station

## Design Models and Perspectives



# Patsaouras Plaza Bus Station

## Project Budget

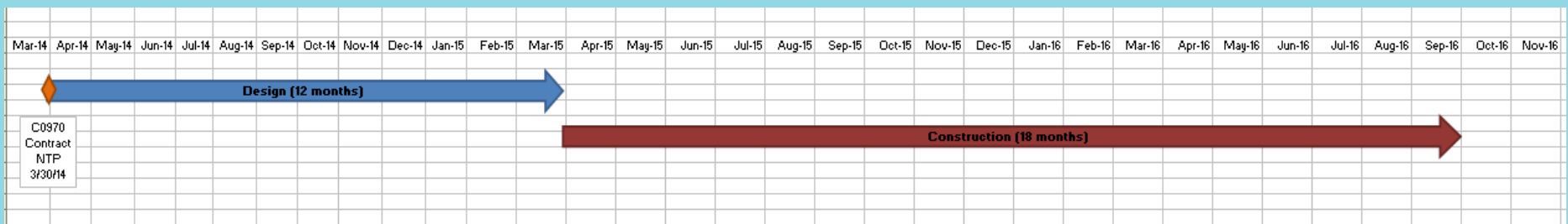


ELEMENT CODE	ELEMENT DESCRIPTION	ORIGINAL BUDGET	CURRENT BUDGET		COMMITMENTS		EXPENDITURES		CURRENT FORECAST		BUDGET / FORECAST VARIANCE
			PERIOD	TO DATE	PERIOD	TO DATE	PERIOD	TO DATE	PERIOD	TO DATE	
C	CONSTRUCTION	19,992,000	-	19,992,000	-	19,992,000	1,066,000	1,066,000	-	19,992,000	-
S	SPECIAL CONDITIONS	1,000,000	-	750,000	76,500	80,000	2,000	5,500	-	932,000	(182,000)
R	RIGHT-OF-WAY	-	-	-	-	-	-	-	-	-	-
P	PROFESSIONAL SERVICES	6,792,000	-	7,425,000	394,000	3,285,500	138,000	2,810,000	-	6,792,000	(267,000)
PC	PROJECT CONTINGENCY	3,200,000	-	2,817,000	-	-	-	-	-	3,200,000	121,000
<b>TOTAL PROJECT</b>		<b>30,984,000</b>	<b>-</b>	<b>30,984,000</b>	<b>470,500</b>	<b>23,357,000</b>	<b>1,206,000</b>	<b>3,881,500</b>	<b>-</b>	<b>30,770,000</b>	<b>206,000</b>





# Patsaouras Plaza Bus Station Project Schedule



C0970 Contract Award		3/26/2014
C0970 Contract NTP		3/30/2014
Final Design	4/1/2014	4/1/2015
Major Construction	4/2/2015	10/1/2016



# Patsaouras Plaza Bus Station

## Current Status



- **Design/Build Contract awarded to OHL USA in March 2014**
- **Final Design in Progress (60% Design completed January 2015)**
- **Caltrans final approvals and right of way transfers in process**
- **Construction permits in process**
- **Utility Relocation starts March 2015**
- **Foundation Construction starts April 2015**
- **Station is complete October 2016**

