

TRANSIT SERVICE & CAPITAL IMPROVEMENT PLAN (FY 2014 – FY 2018)



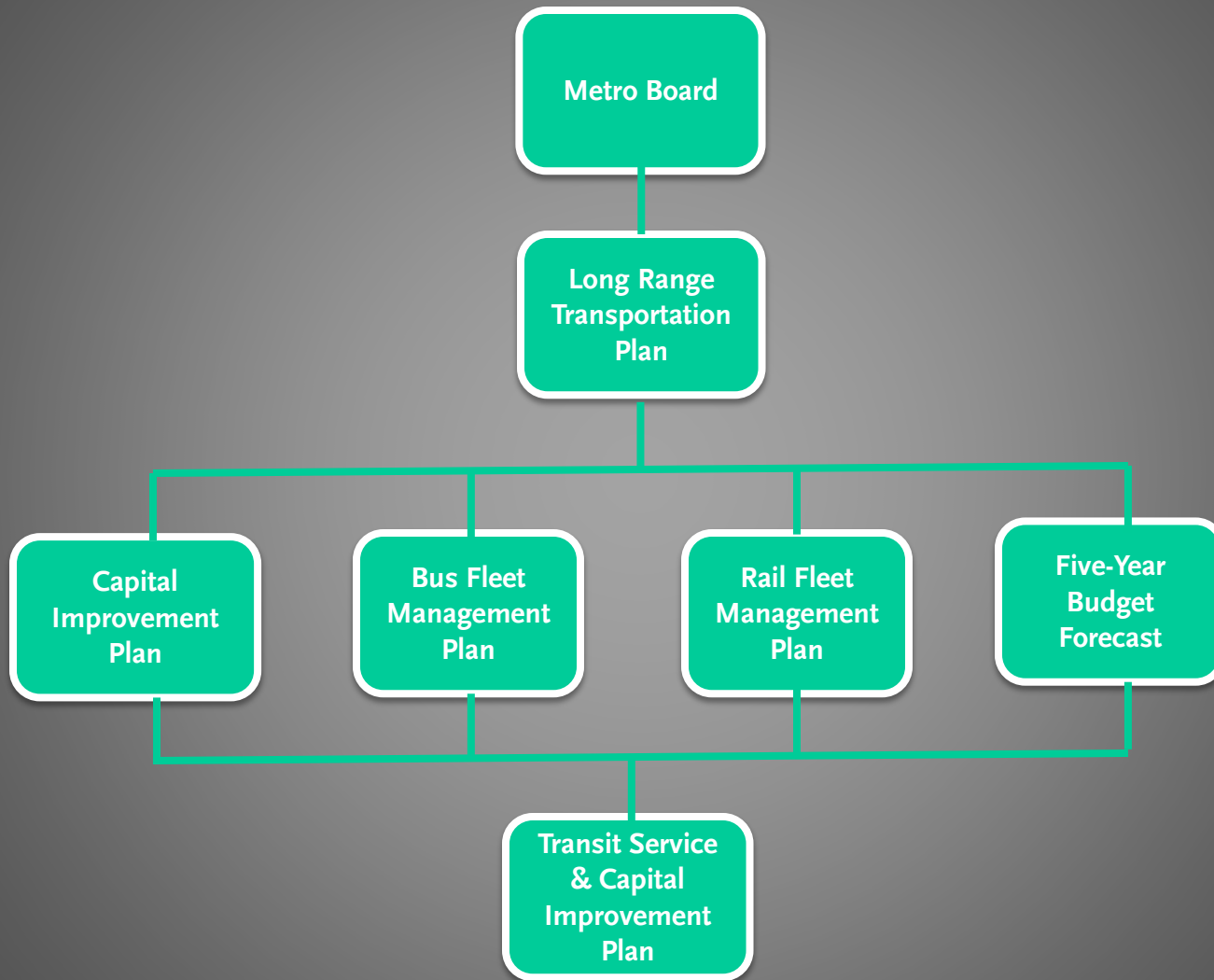
BACKGROUND

- Formerly referred to as the five-year Short Range Transit Plan (SRTP) and was last formalized and published in March 2000.
- In 2005, in lieu of an SRTP update, Metro received a court order to develop and implement a New Service Plan.
- An SRTP update was initiated in 2009, but was never formalized.
- This is an updated five-year plan (FY 2014 – FY 2018).

WHAT IS IT?

- 5-year implementation plan for near term transit service and capital improvement projects.
- Consistent with the goals & strategies of Metro's 2009 Long Range Transportation Plan (LRTP)
- Identifies challenges and opportunities
- Assist staff in their ongoing decision-making process as this plan is implemented.

CONTRIBUTING DOCUMENTS



OTHER COORDINATING PLANNING DOCUMENTS

- The following documents are currently being developed in concert with the TSCIP.
 - Short Range Transportation Plan (SRTP)
 - State of Good Repair & Asset Management Plan
 - Regional Short Range Transit Plan (RSRTP)

SRTP ORGANIZATION

Chapter Sequence

Introduction

Current
Transit
System

Challenges
&
Opportunities

New Transit
Projects &
Studies

Fare
Structure &
Policy

Capital
Improvement
Projects

Operations
and Capital
Funding

CURRENT TRANSIT SYSTEM

- Primary transit provider.
- Service area is over 1,400 Sq. Miles.
- Over 15,000 Bus Stops & 72 Rail Stations.
- Over 1,900 peak buses & 190 light/heavy rail cars.
- Approximately 1M bus boardings and 350K rail boardings daily.

- 6 Rail Routes
 - 4 Light Rail
 - 2 Heavy Rail (Subway Line)
- 171 Bus Routes
 - Metroliner (Orange & Silver)
 - Rapid
 - Express
 - Limited
 - Local
 - Shuttle
- A number of bus routes operate 24 hr. service.

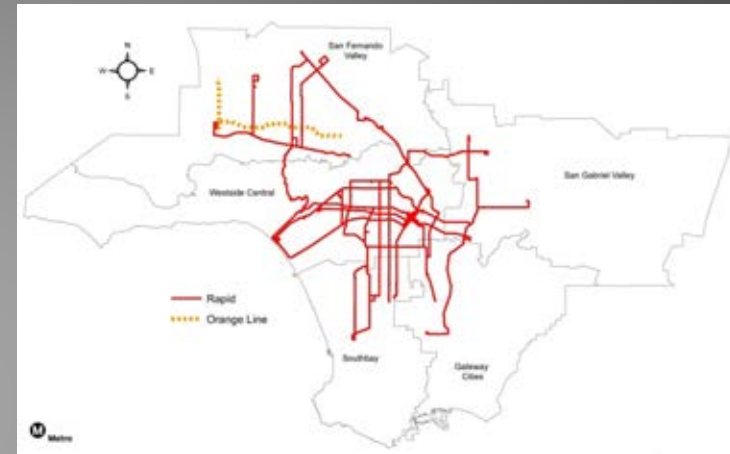


METRO BUS SYSTEM MAPS

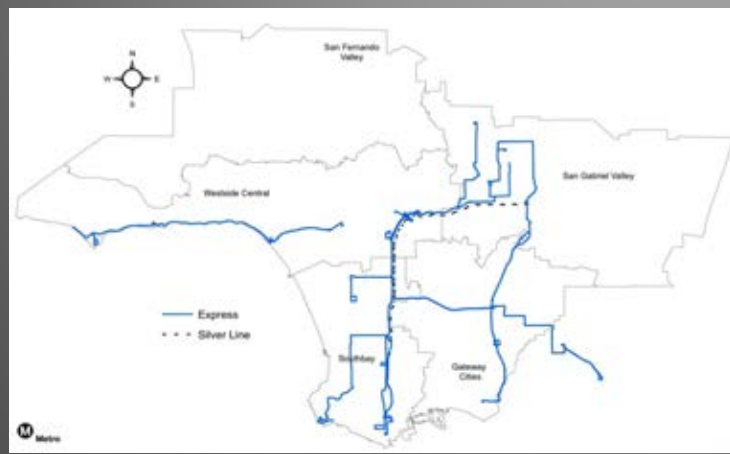
Local, Limited, and Shuttle



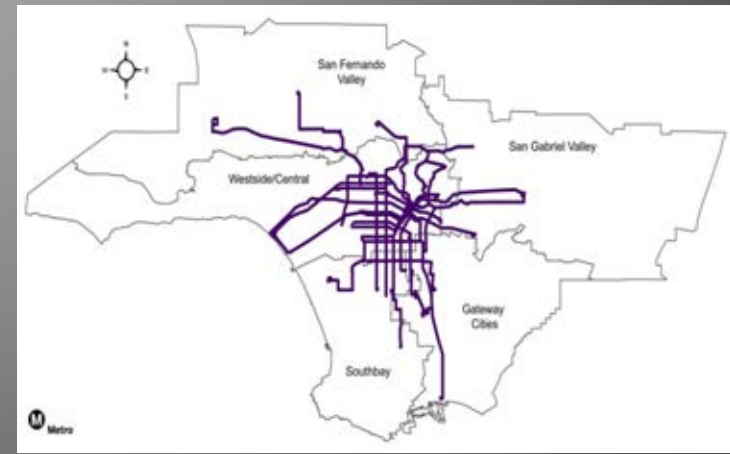
Orange Line & Rapid



Silver Line & Express



24-Hour Bus Routes



Metro

CURRENT RAIL NETWORK



CHALLENGES & OPPORTUNITIES

- Operating Budget
- Capital Budget
- Farebox Recovery Ratio
- New Bus Division 13
- Los Angeles City Proposed Bicycle Lanes
- Demographics

NEW TRANSIT PROJECTS & STUDIES

- Projected completed transit projects:
 - Wilshire BRT Project (FY 2014)
 - Gold Line Foothill Extension to Azusa (FY 2016)
 - Expo Line extension to Santa Monica (FY 2016)
- Rail projects under construction:
 - Crenshaw Light Rail (FY 2019)
 - Regional Connector (FY 2020)
 - Purple Line extension to Westwood (TBD)

REGIONAL CONNECTOR: PLANNED RESTRUCTURING OF THE BLUE, GOLD & EXPO RAIL LINES



- Regional Connector will connect 3 existing light rail lines (Blue, Gold, & Expo Lines).
- Planned combination of the Expo Line and Gold Line segment to East Los Angeles.
- Planned combination of the Blue Line and Gold Line segment to Azusa.

PROJECTED RAIL NETWORK (2022)



METRO FARE STRUCTURE

- A planned fare increase on July 1, 2013 was deferred and a fare policy study was initiated.
- Key Objectives of the Fare Policy Study
 - Increase Fare Revenue
 - Increase Farebox recovery Ratio
 - Address Transfer Needs of Cash Paying Customers
 - Consideration of Premium Fares for Premium Services
 - Incentivizing TAP Usage.

CAPITAL IMPROVEMENT PROJECTS

- Metro currently operates 11 bus divisions.
 - Divisions 1, 2, and 3 are scheduled to be upgraded.
 - A new bus Division 13 is under construction.
- Metro currently operates 4 rail divisions.
 - 3 new light rail divisions are being built to support:
 - Crenshaw Line
 - Expo Line
 - Gold Line
- Vehicle Procurement
 - Bus: Retirement eligible at 12 years or 500,000 miles
 - Rail: Retirement eligible at 25 years



OPERATIONS & CAPITAL FUNDING

- Operations Funding

- Bulk of funds through the Formula Allocation Process (Prop A, TDA, PTA, and STA) with other operators.
- Other Sources: Prop C Discretionary Funds, Federal Grant 5307, Measure R, CMAQ, fares.

- Capital Funding

- Prop A, Prop C, TDA, TIFIA Loan, Federal Grants 5309, 5337, & 5339, CMAQ, and Measure R.



QUESTIONS