

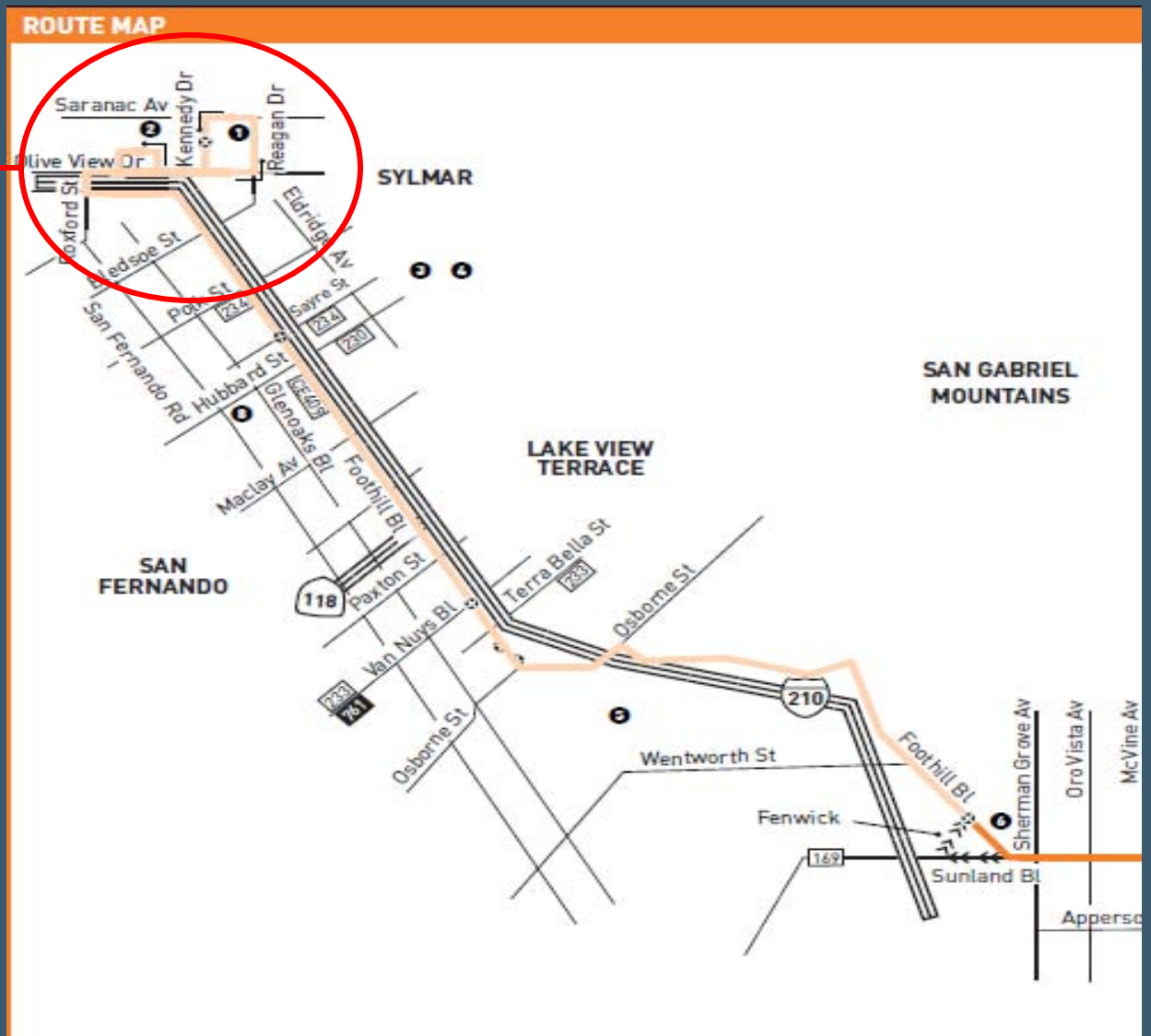
June 23, 2013 Service Changes

Service Planning and Analysis

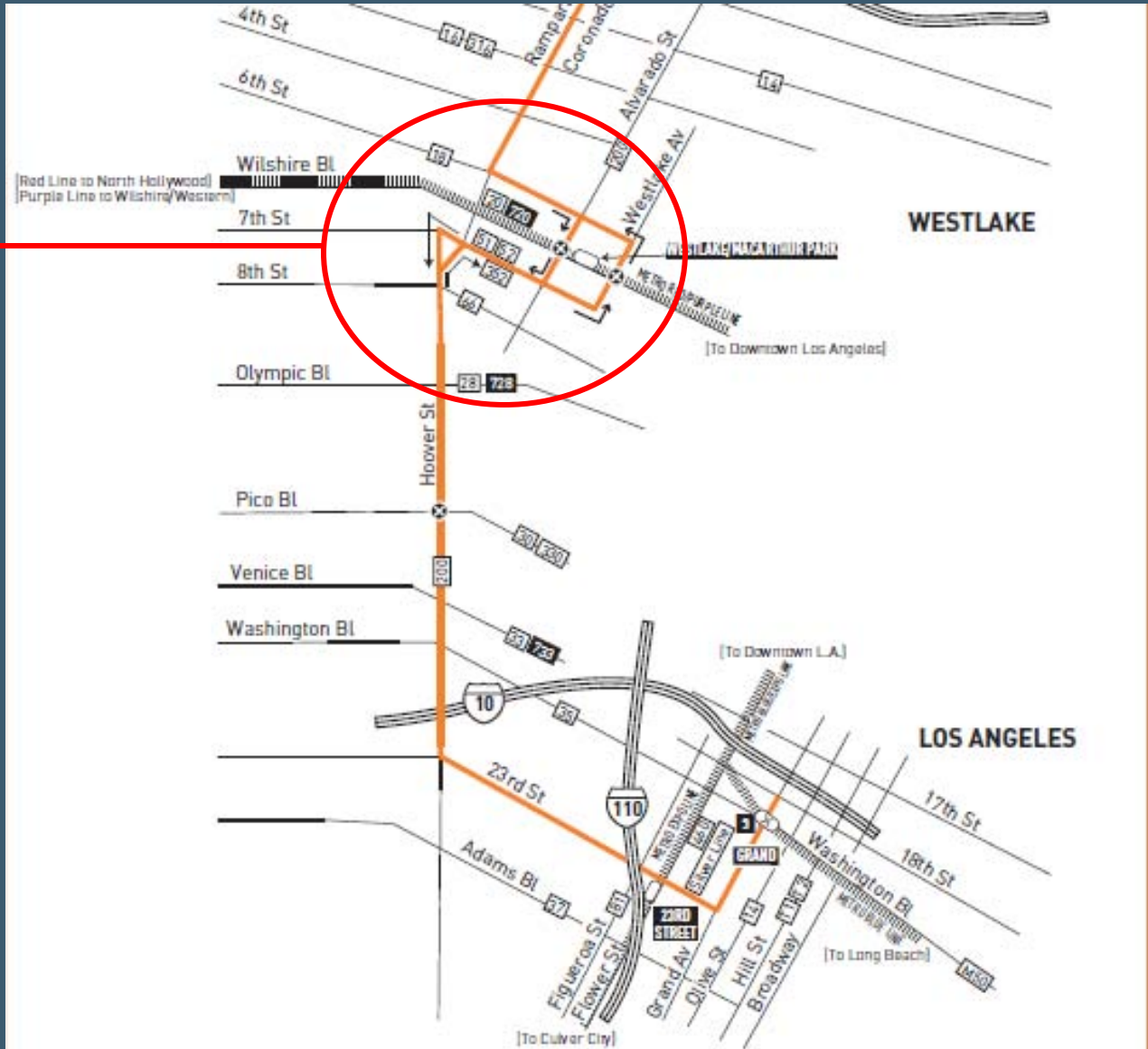


- ✓ Improve on-time performance by analyzing and modifying running time.
- ✓ Add service where passenger loads exceed 130% Board approved load standard.
- ✓ Implement two minor route changes to avoid accident prone intersections.
- ✓ Improve access to the Olive View Medical Hospital and Mental Health Facilities.
- ✓ Join Lines 90/290 to reduce transfers.

Improve service
to Olive View



Modify route to
use Alvarado St
between 6th &
7th St.



Orange Line Service Improvements

- Improve mid-day headway from 10 to 8 minutes, and evening improvements.

