

Gateway Cities Service Council

April 11, 2013

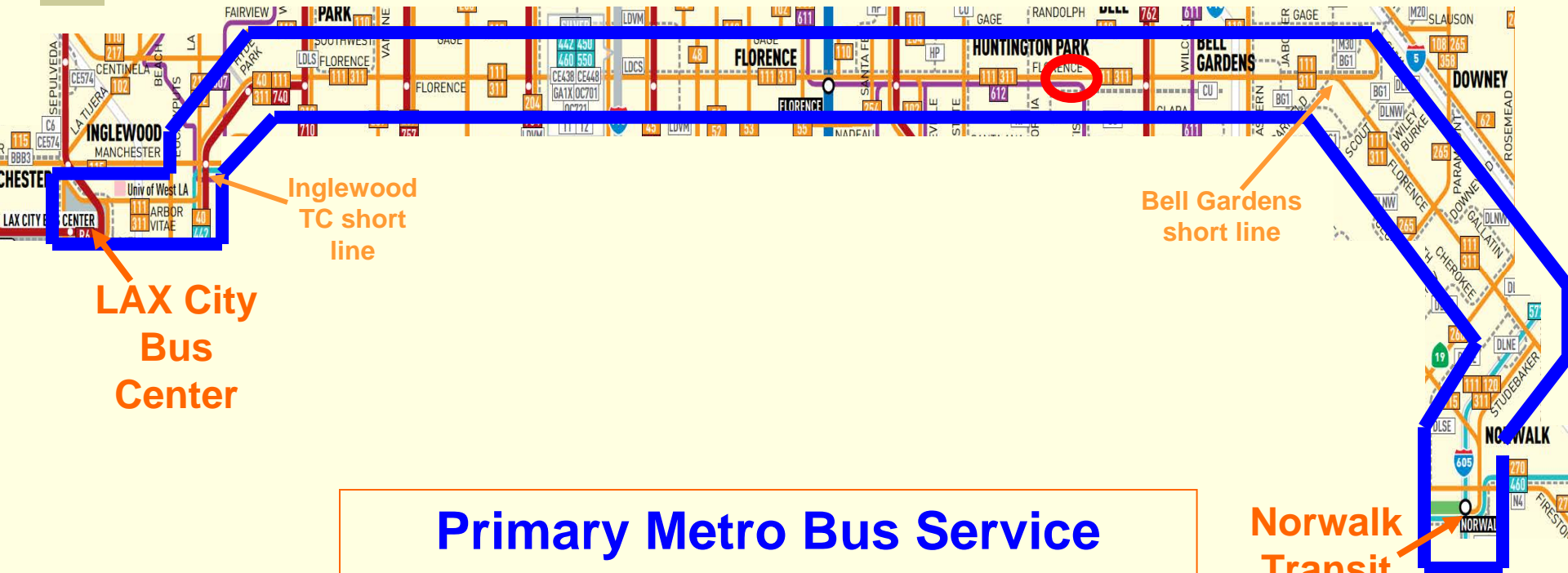
Florence Av. Corridor Study

Florence Av. Corridor Study

Primary Metro Bus Service

Lines 111 and 311

GWC Florence Av. Corridor Study



Primary Metro Bus Service
Lines 111 and 311



GWC Florence Av. Corridor Study

Service Statistics

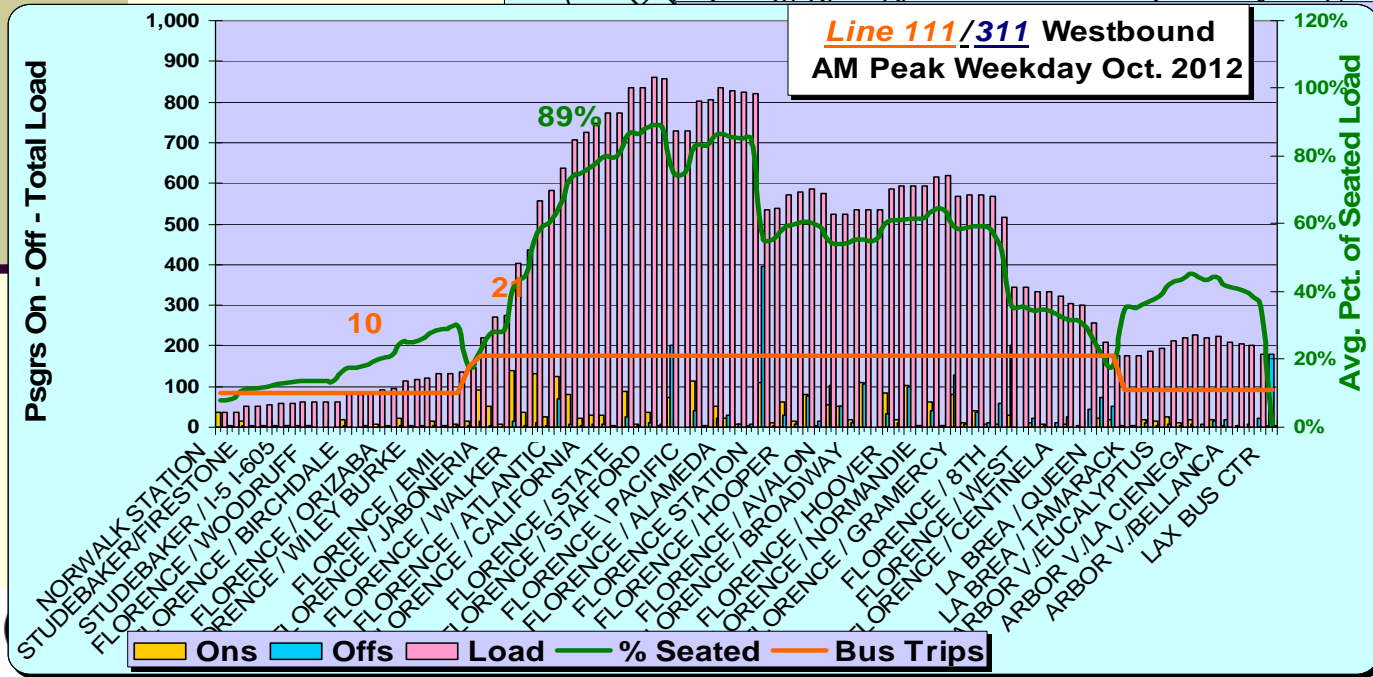
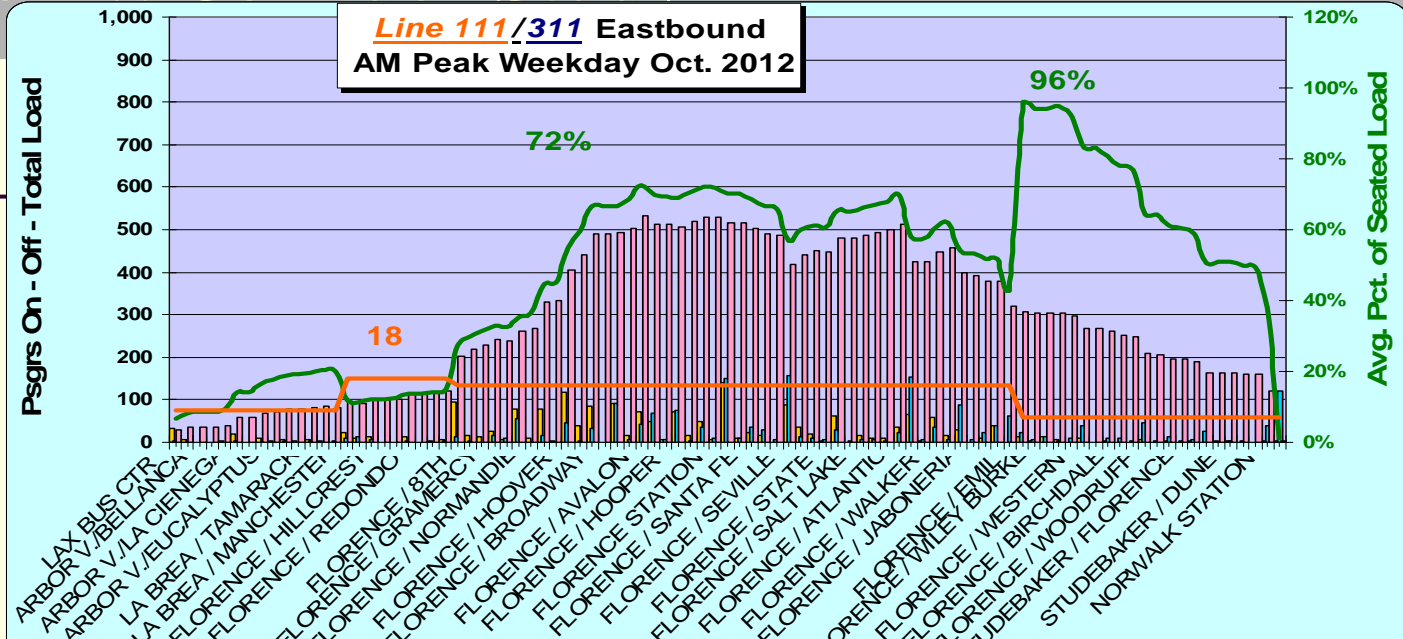
Ridership (Oct. 2012)	Line 111	Line 311	Combined
Weekday	16,195	4,034	20,229
Saturday	14,142	N/S	14,142
Sunday	11,188	N/S	11,188

Average Service Frequencies (Mins.)	Line 111	Line 311	Combined
Weekday AM Peak	18 - 20	18 - 20	9 - 10
Weekday Mid-Day	15	N/S	
Weekday PM Peak	16 - 18	16 - 18	8 - 9
Saturday	11-12	N/S	
Sunday	11-12	N/S	

Bus Line Performance	Line 111/311	Sys. Avg
Subsidy / Passenger	\$1.27	\$1.75
Subsidy / Psgr. Mile	\$0.39	\$0.42
Passengers / Bus Hr.	68	55
Psgr. Miles / Seat Mi.	0.545	0.471



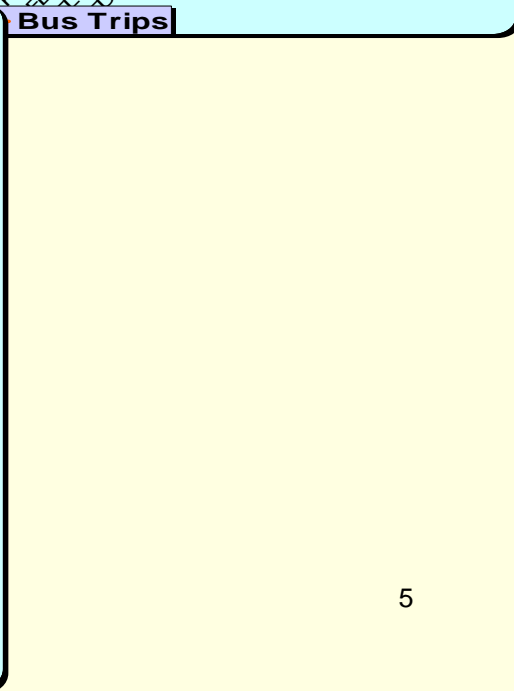
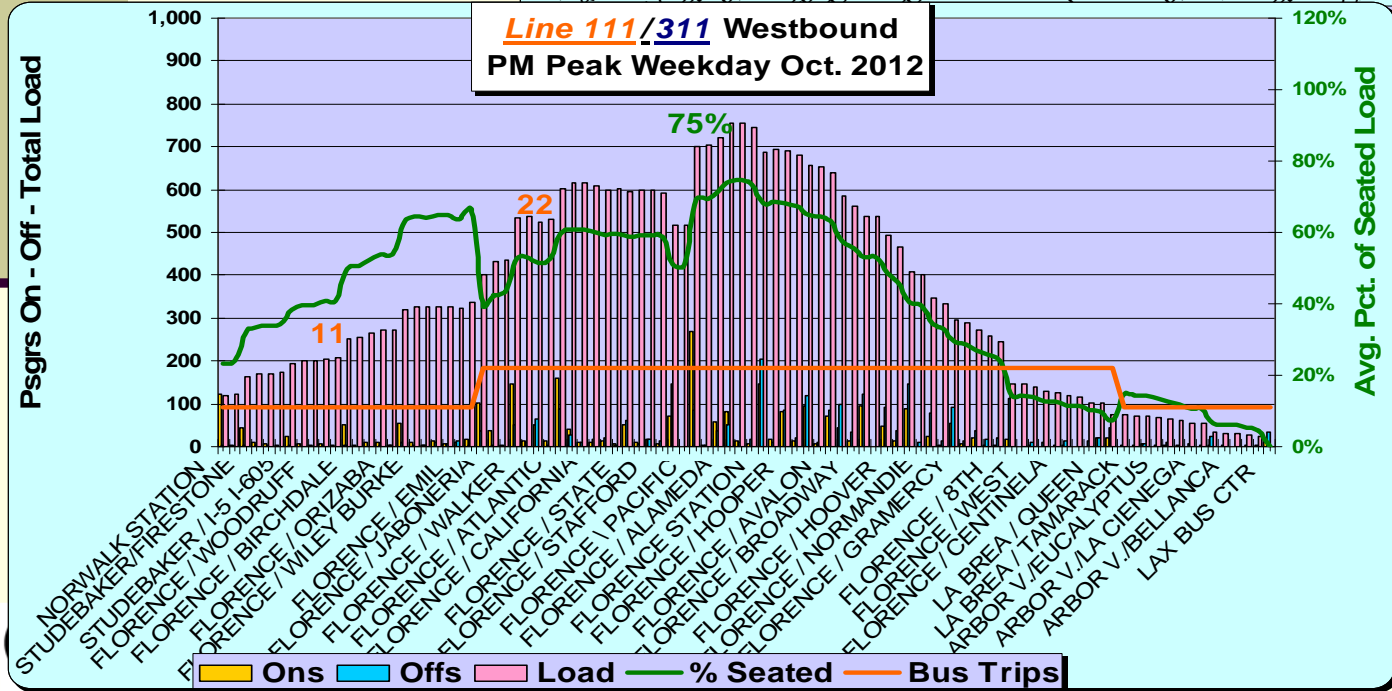
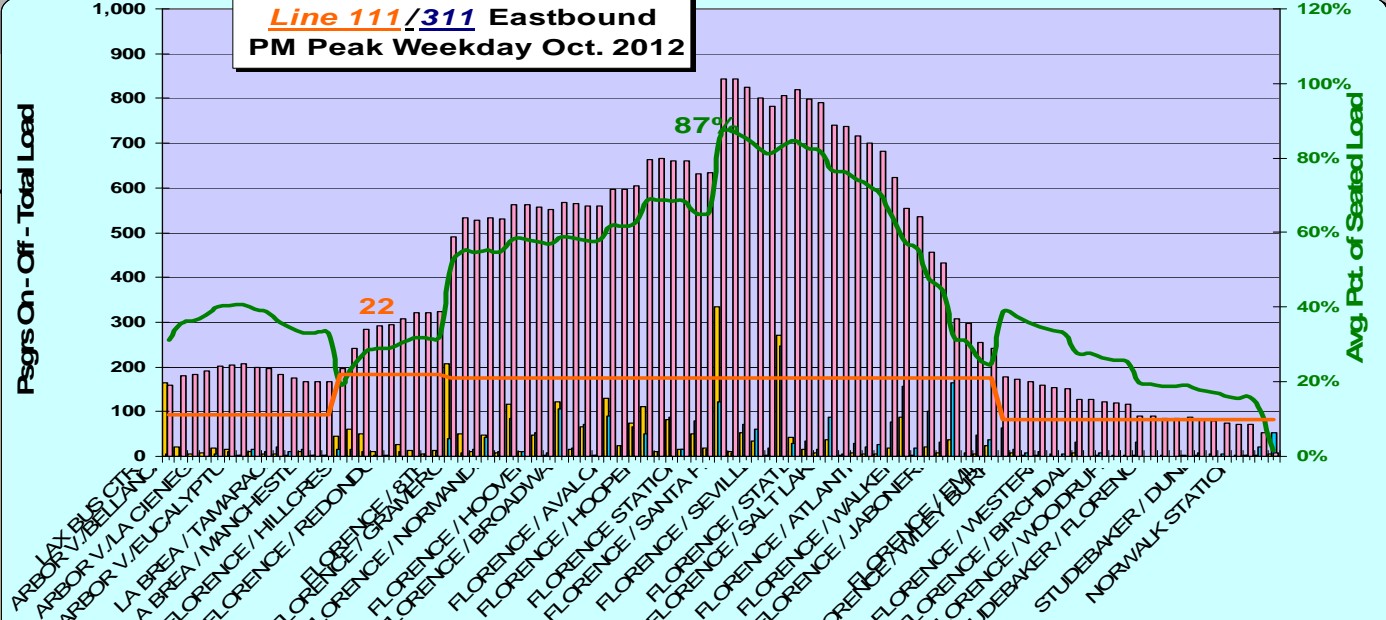
GWC Florence Av. Corridor Study



Bus Trips

Ons Offs Load % Seated Bus Trips

GWC Florence Av. Corridor Study



Possible Service Modification to Consider

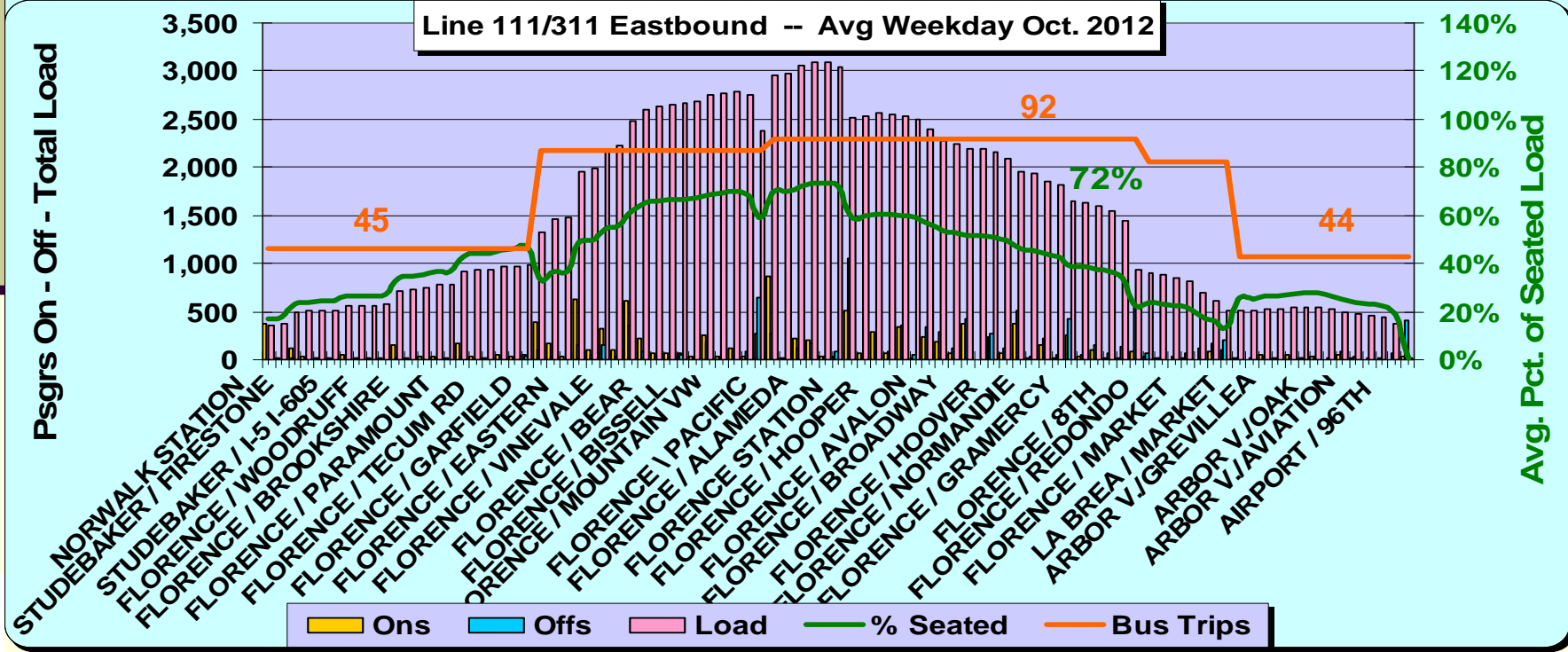
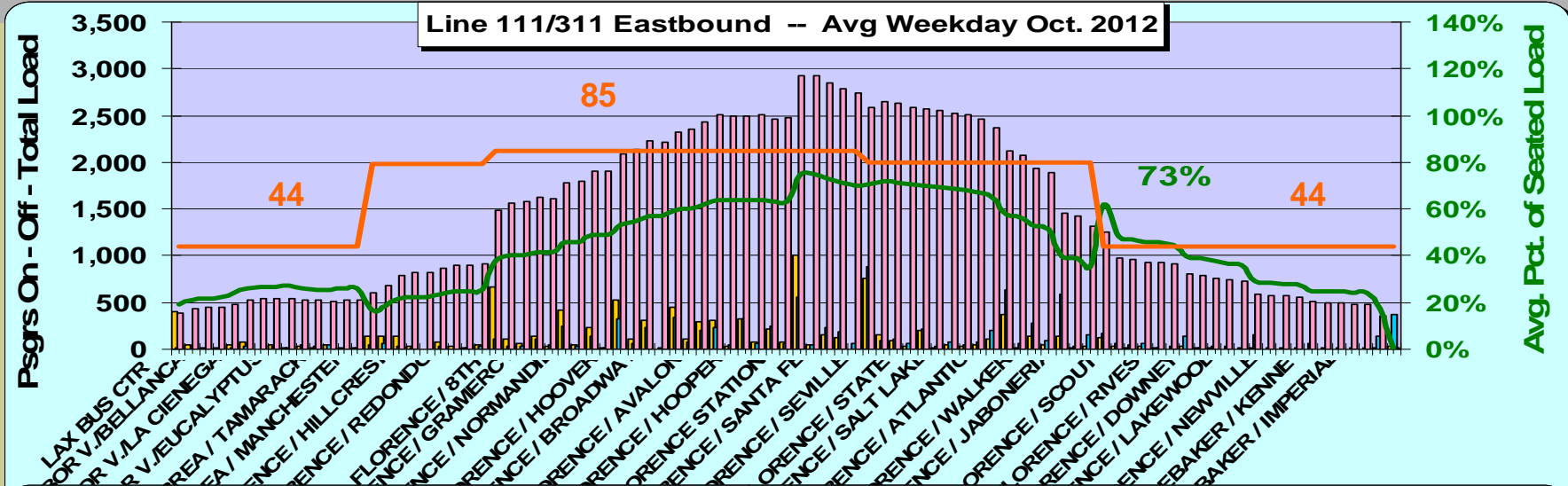
- a) Cancel limited stop service and increase local service**
- b) If cancelling limiteds saves bus hrs. increase service to Norwalk Green Line Station**
- c) Establish night connection with Blue Line**
- d) Other modifications as developed today**

Next Steps

- a) Agree on selected types of service modification**
- b) Work with Service Planning to evaluate modifications**
- c) Return to GWC Service Council in June**
- d) Select modifications to be part of Jan. 2014 hearing**
- e) Approved modifications could be implemented June 2014**

Questions ?

GWC Florence Av. Corridor Study



■ Ons
 ■ Offs
 ■ Load
 — % Seated
 — Bus Trips

