

System Safety and Operations Report



System Safety and Operations Committee

April 18, 2013

Employees Recognition – April 2013

Rail Roadeo - Transportation

- Norma Martinez, Gerardo Perez, Jorge Zavaleta

Rail Roadeo - Maintenance

- Jose Padilla, Rafaele Mastrangelo Jr., Charley Houck

In-Service On-Time Performance – February 2013

Bus

Actual 75.2%

Goal 80%

Rail- Heavy

Actual 99.5%

Goal 99%

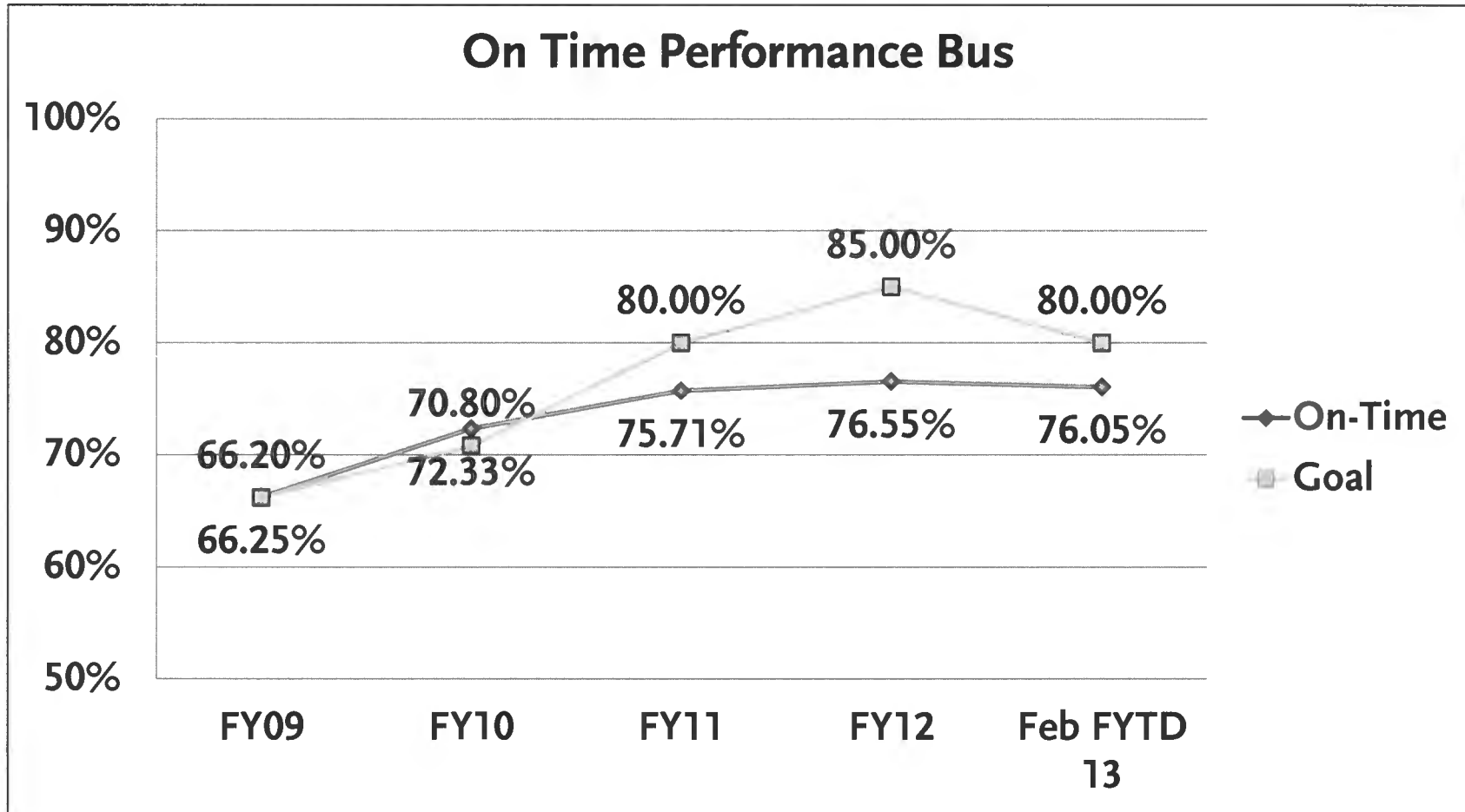
Rail- Light

Actual 97.5%

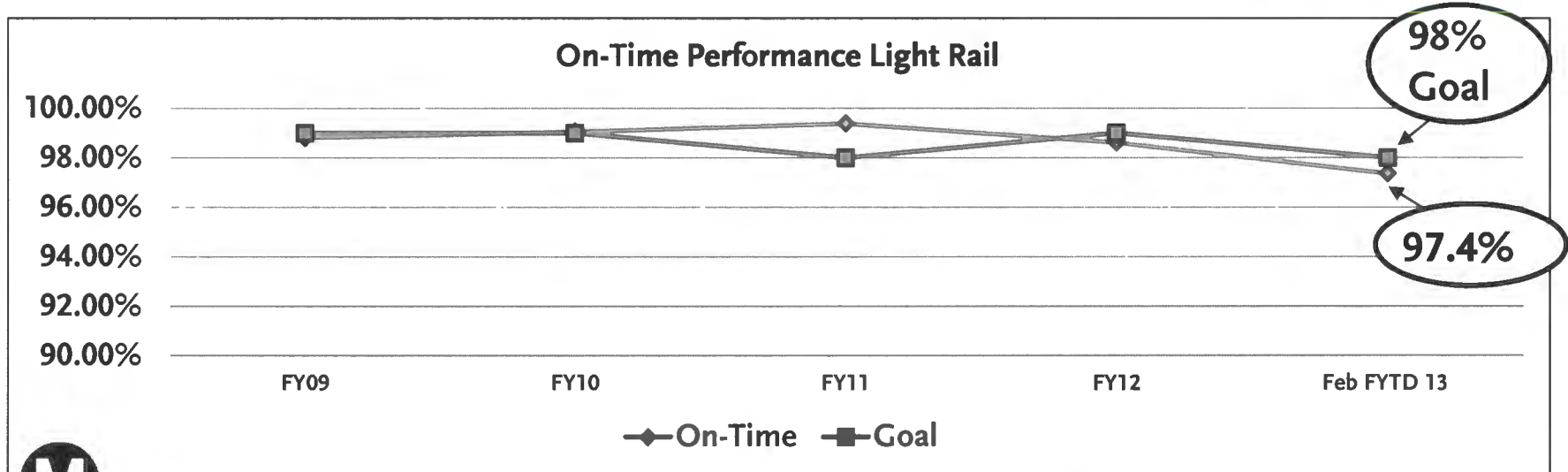
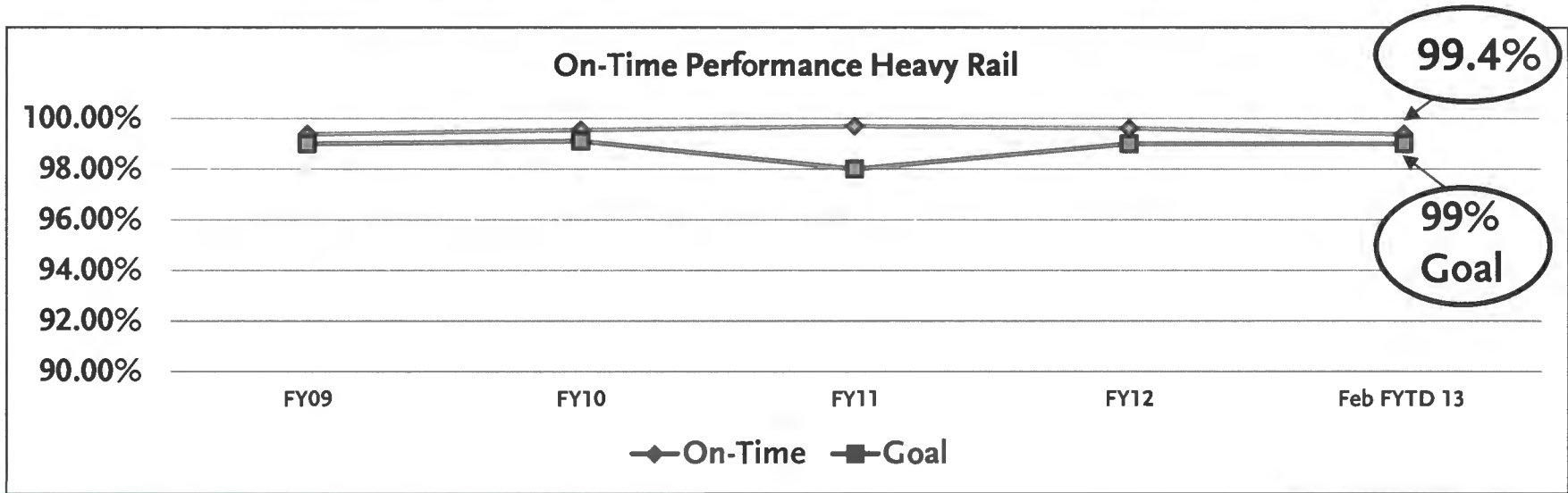
Goal 98%



Bus Service Reliability Year-to-date – February 2013

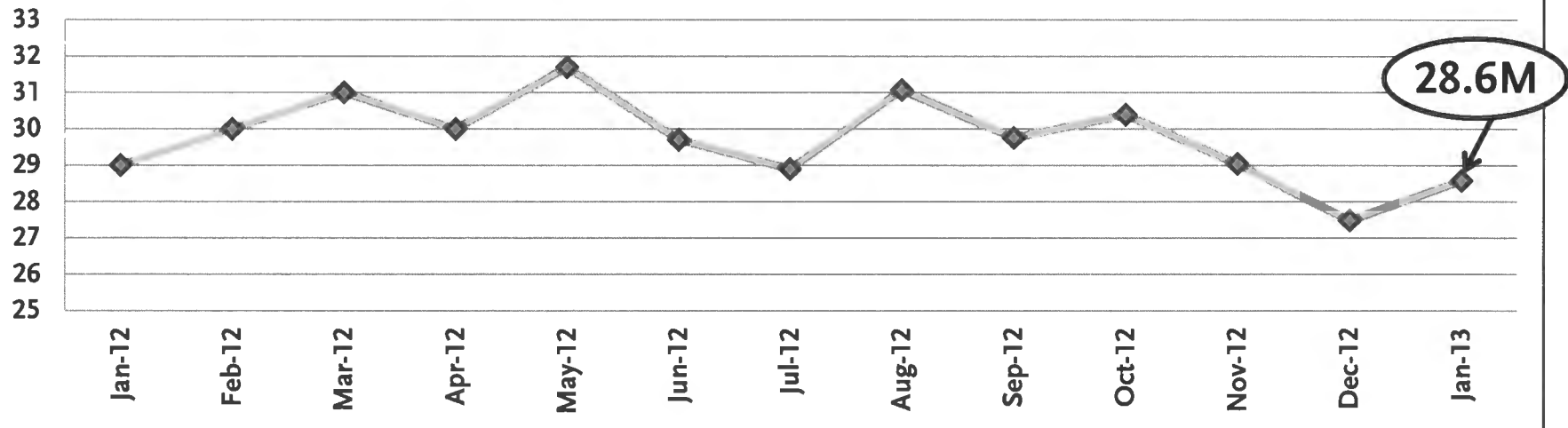


Rail Service Reliability Year-to-Date – February 2013

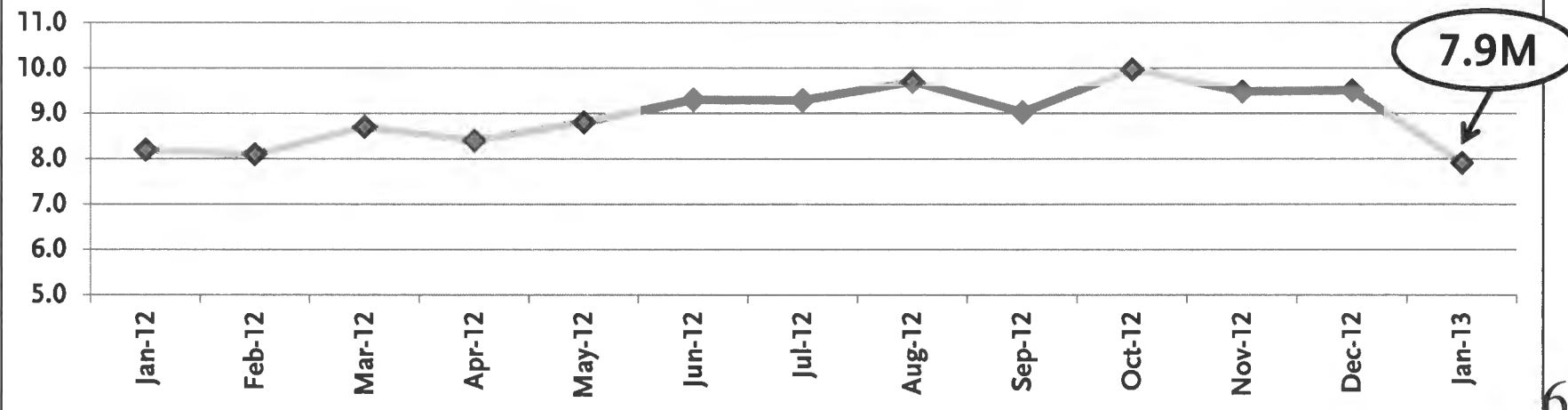


Bus and Rail Boardings- February 2013

Systemwide Bus Boardings in Millions



Systemwide Rail Boardings in Millions



Rail Line Improvement Update: Expo Line

Expo Culver City Lot Paved and Striped



Blue/Expo Line Crossing



Metro

Heads Up!

- Install pavement markings at non-gated station crossings
- 20 Blue Line trains wrapped with safety messages



Customer Comments – February 2013

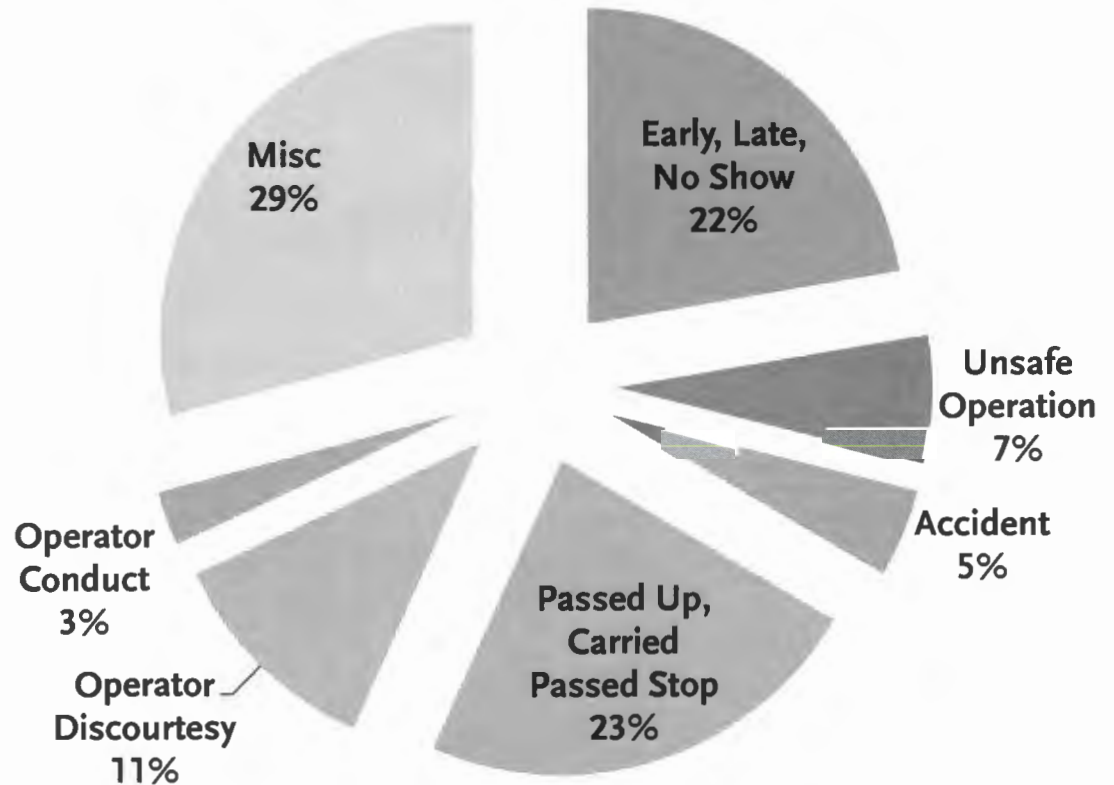
Commendations 79

Complaints per 100,000
Bus Boardings

Bus

Goal 2.20

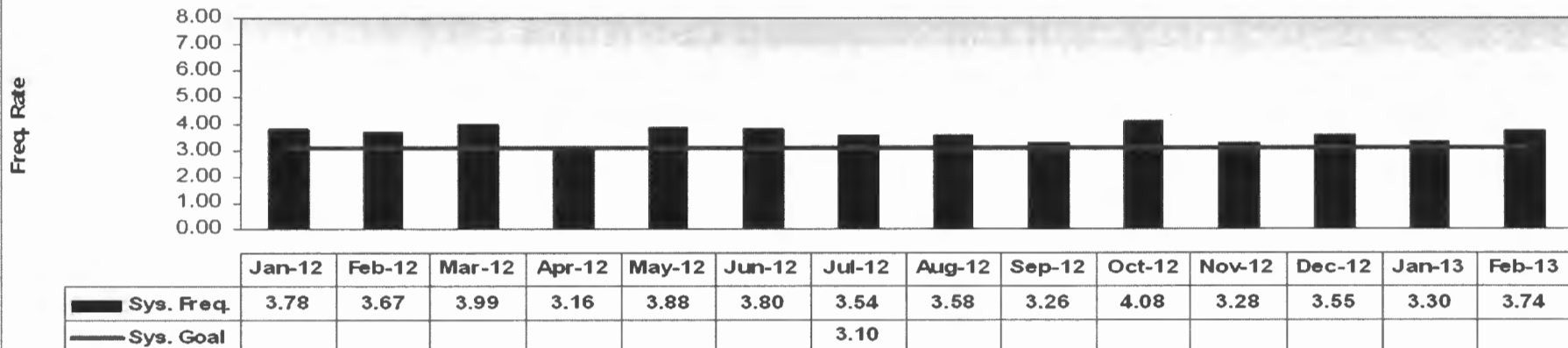
Actual 3.02



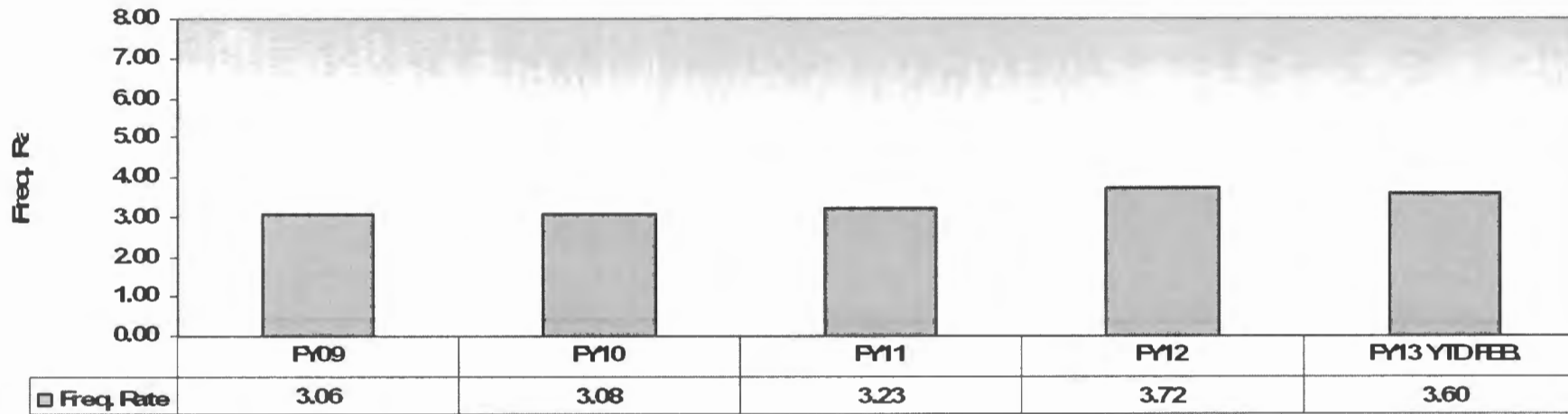
Total Complaints – 963

Bus Accidents- February 2013

Bus Accidents Per 100,000 Hub Miles

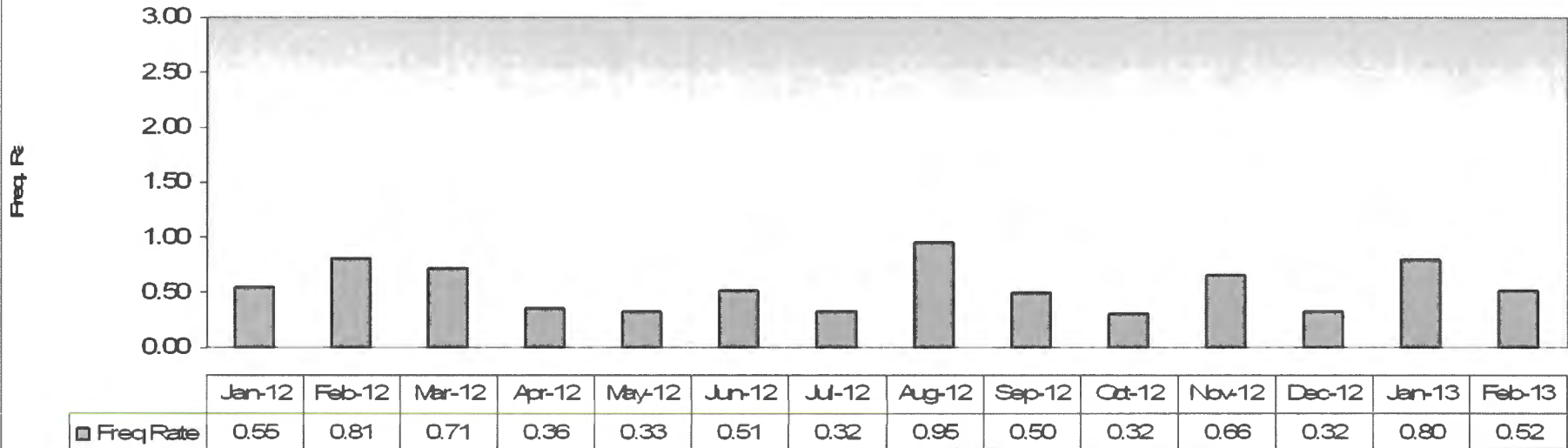


Bus Accidents Per 100,000 Hub Miles

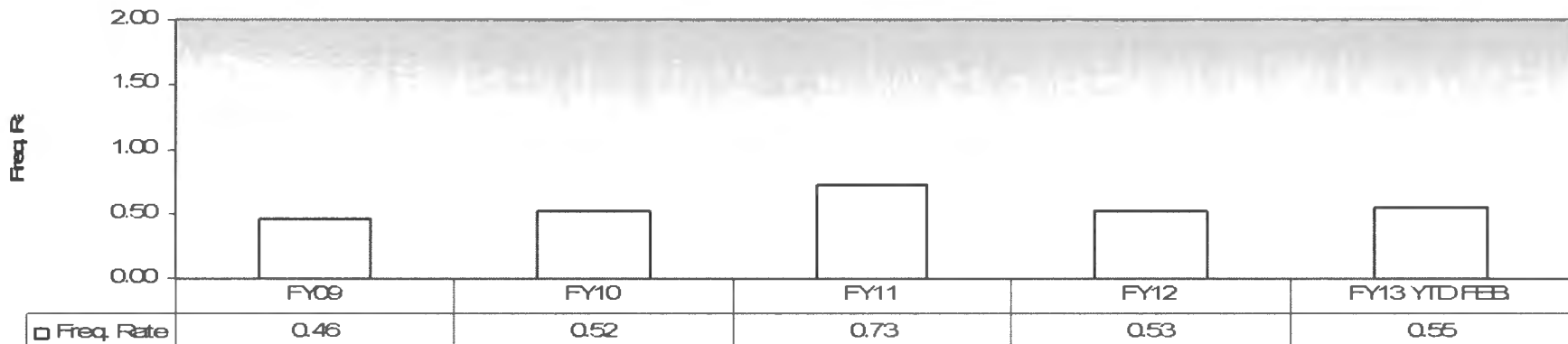


Rail Accidents – February 2013

Rail Accidents Per 100,000 Train Miles

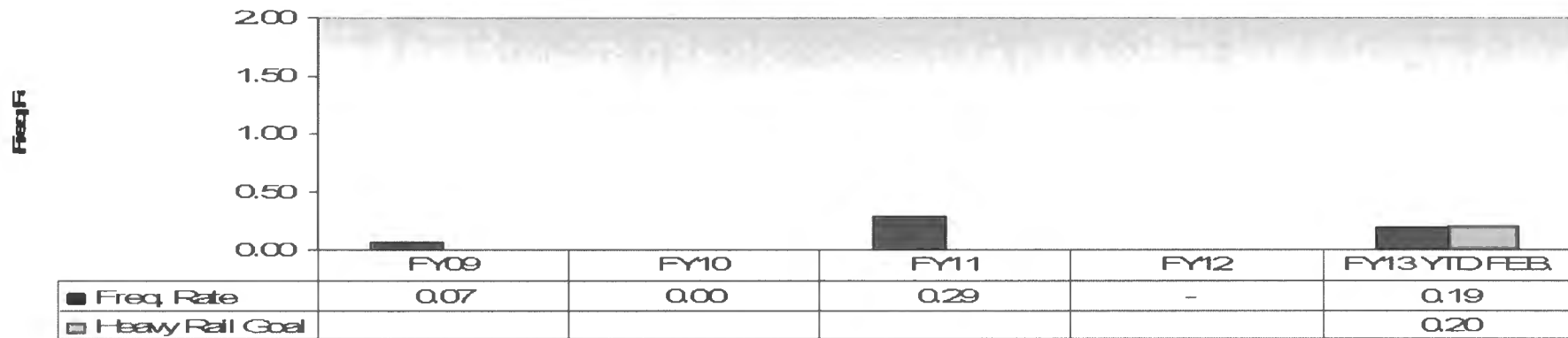


Systemwide Rail Accidents Per 100,000 Train Miles

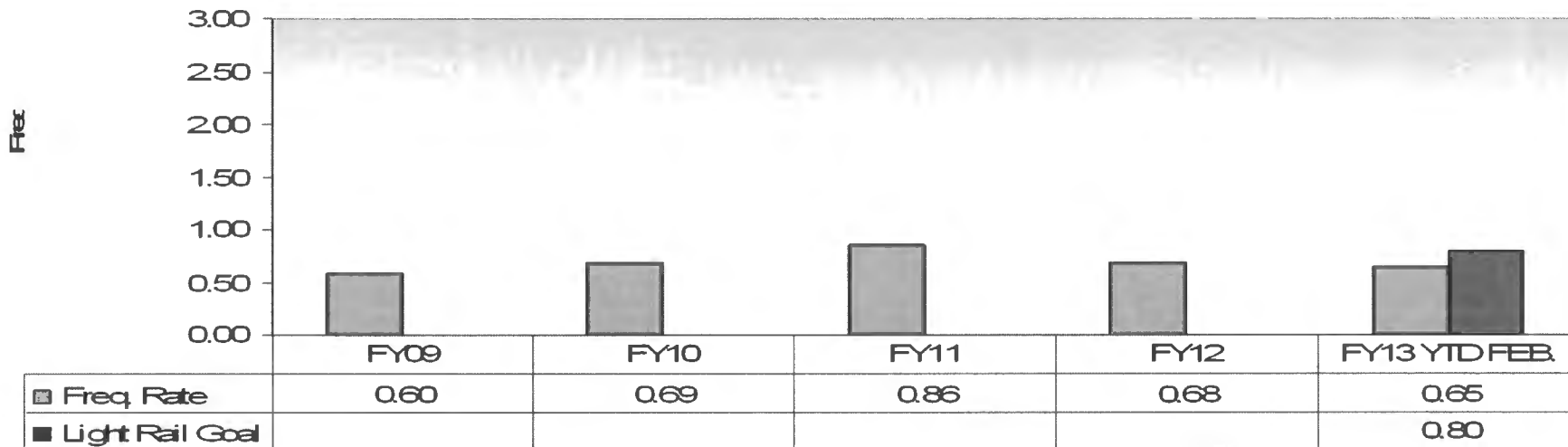


Heavy and Light Rail Accidents – February 2013

Heavy Rail Accidents Per 100,000 Train Miles

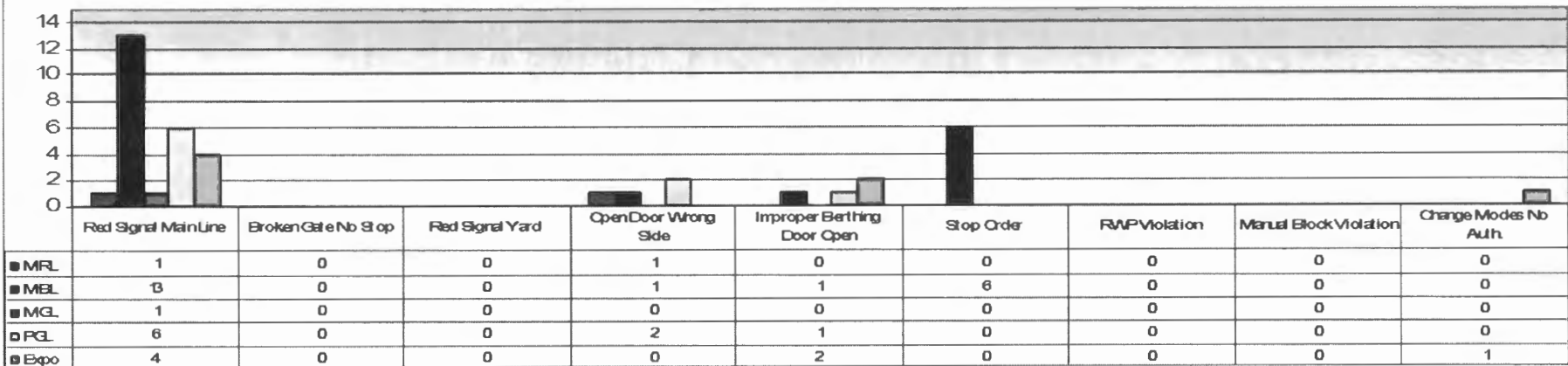


Light Rail Accidents Per 100,000 Train Miles

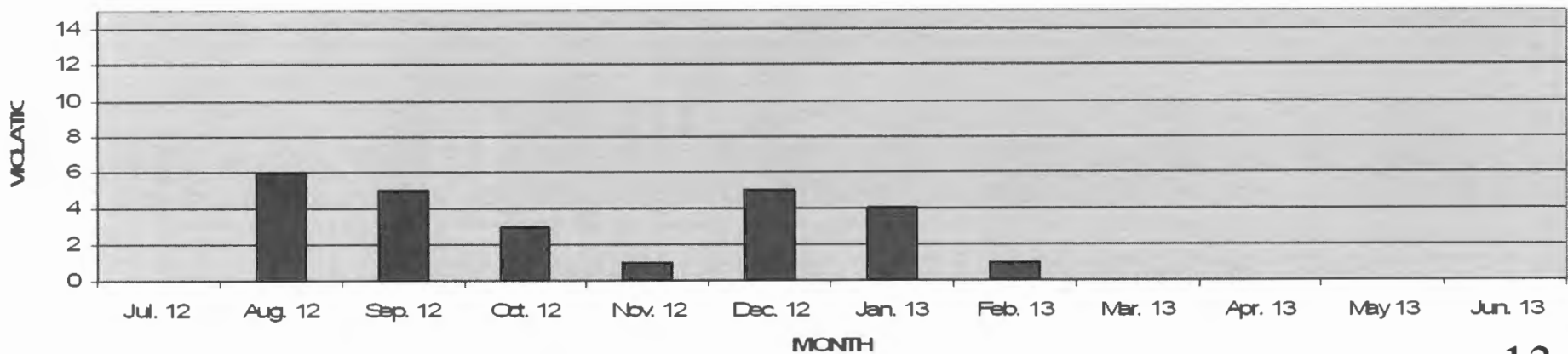


Rail Safety – February 2013

Rail Systemwide Safety Incidents FY13 YTD (as of Feb.)

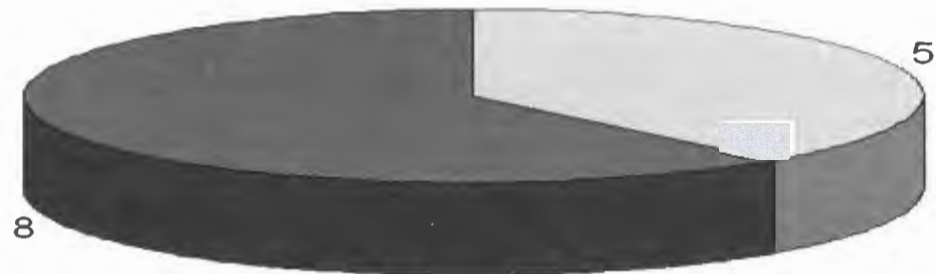


RAIL SIGNAL VIOLATIONS ON MAIN LINE FY13 YTD (as of Feb.)



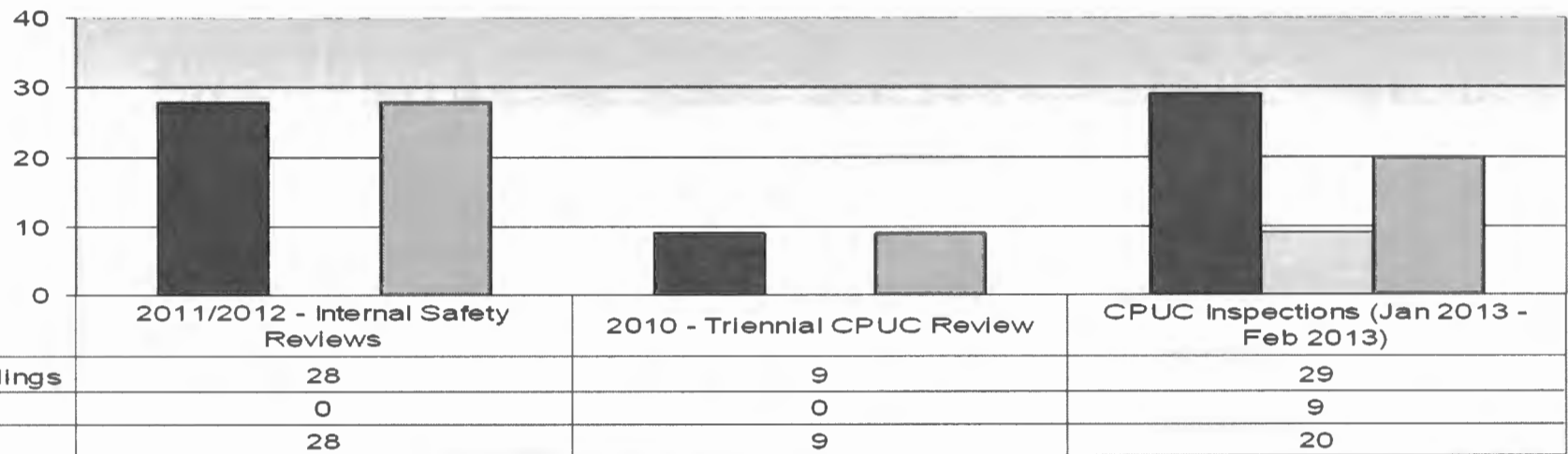
Inspections and Corrective Actions – February 2013

Number of Inspections (JAN - FEB 2013)



Inspections with no findings
 Inspections with findings

Status of Corrective Action Plans



Safety Education – February 2013

Rail Safety Education and Outreach
Number of People Reached - July 2011 to February 2013

