

## **Metro South Bay Cities Corridor Study Bus Lines**

**Metro Lines 210 & 710  
On-Time Performance**

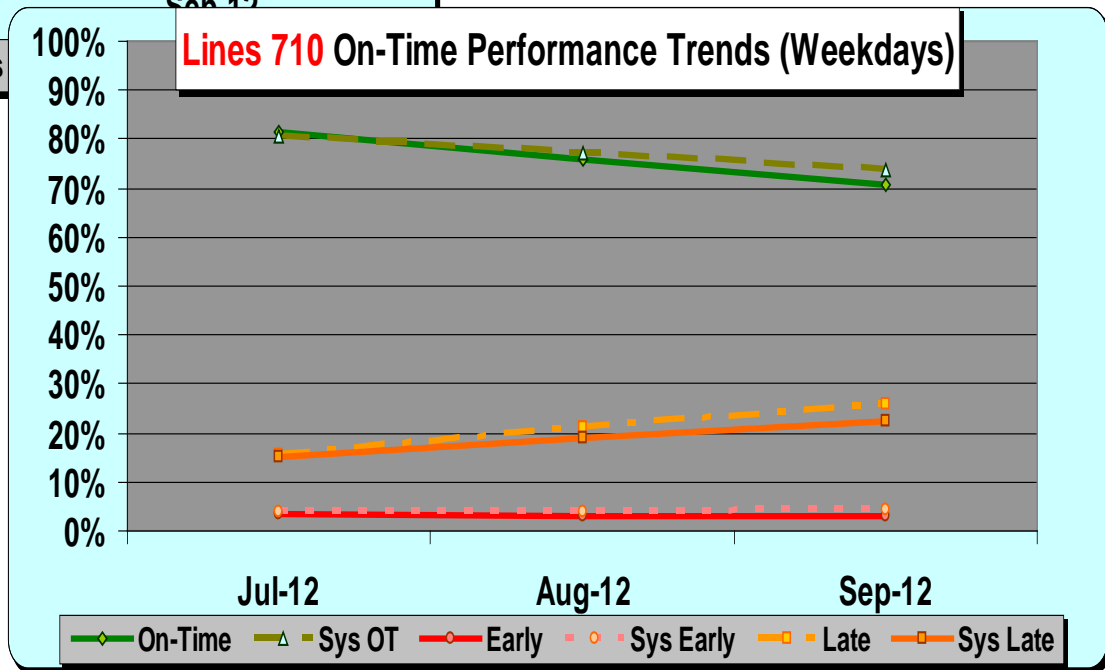
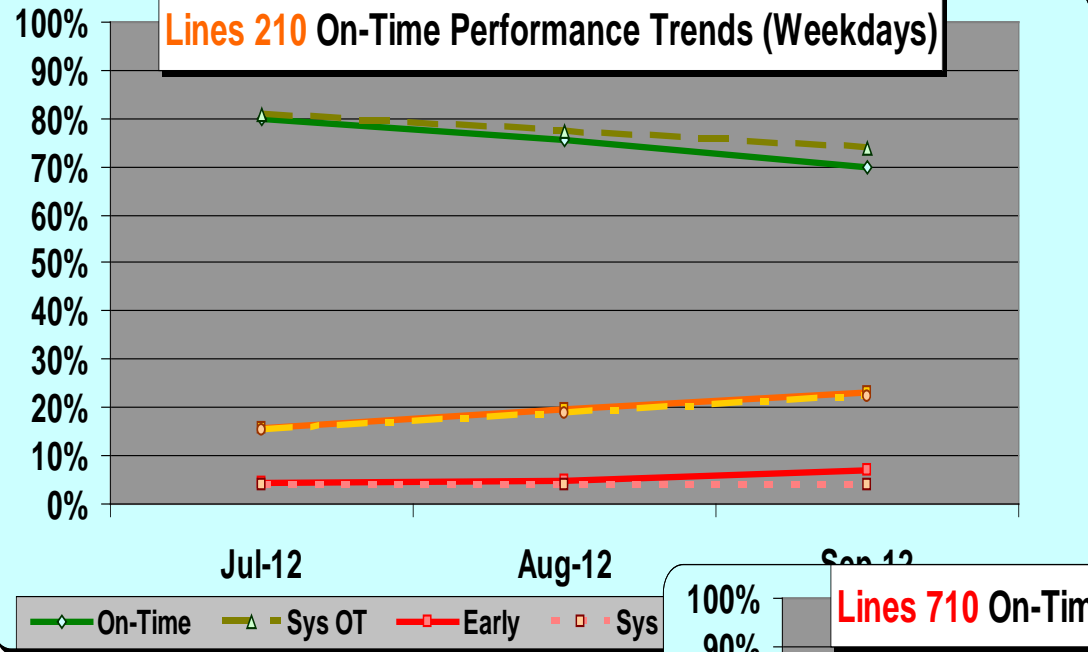
# SBC Service Council November 2012 Meeting

## Metro Bus Three Month On-Time Performance Trends

Bus Line		Weekdays			Saturdays			Sundays		
		Jul-12	Aug-12	Sep-12	Jul-12	Aug-12	Sep-12	Jul-12	Aug-12	Sep-12
<b>210</b>	<b>On-Time</b>	79.9%	75.3%	70.0%	77.7%	71.9%	65.2%	73.5%	72.4%	70.2%
<b>710</b>	<b>On-Time</b>	81.3%	75.7%	70.9%	87.1%	83.4%	79.0%			
<b>Sys OT</b>		<b>80.8%</b>	<b>77.3%</b>	<b>73.7%</b>	<b>76.1%</b>	<b>73.9%</b>	<b>71.6%</b>	<b>77.8%</b>	<b>74.9%</b>	<b>75.2%</b>
<b>210</b>	<b>Early</b>	4.2%	4.8%	6.8%	4.2%	3.0%	5.4%	4.1%	2.9%	5.6%
<b>710</b>	<b>Early</b>	3.4%	3.0%	3.1%	3.4%	2.9%	1.4%			
<b>Sys Early</b>		<b>3.9%</b>	<b>4.0%</b>	<b>4.1%</b>	<b>3.5%</b>	<b>3.4%</b>	<b>3.6%</b>	<b>3.6%</b>	<b>3.5%</b>	<b>3.9%</b>
<b>210</b>	<b>Late</b>	15.9%	19.8%	23.2%	18.1%	25.1%	29.4%	22.4%	24.7%	24.2%
<b>710</b>	<b>Late</b>	15.3%	21.3%	26.0%	9.5%	13.7%	19.6%			
<b>Sys Late</b>		<b>15.3%</b>	<b>18.8%</b>	<b>22.2%</b>	<b>20.4%</b>	<b>22.7%</b>	<b>24.8%</b>	<b>18.6%</b>	<b>22.7%</b>	<b>21.0%</b>

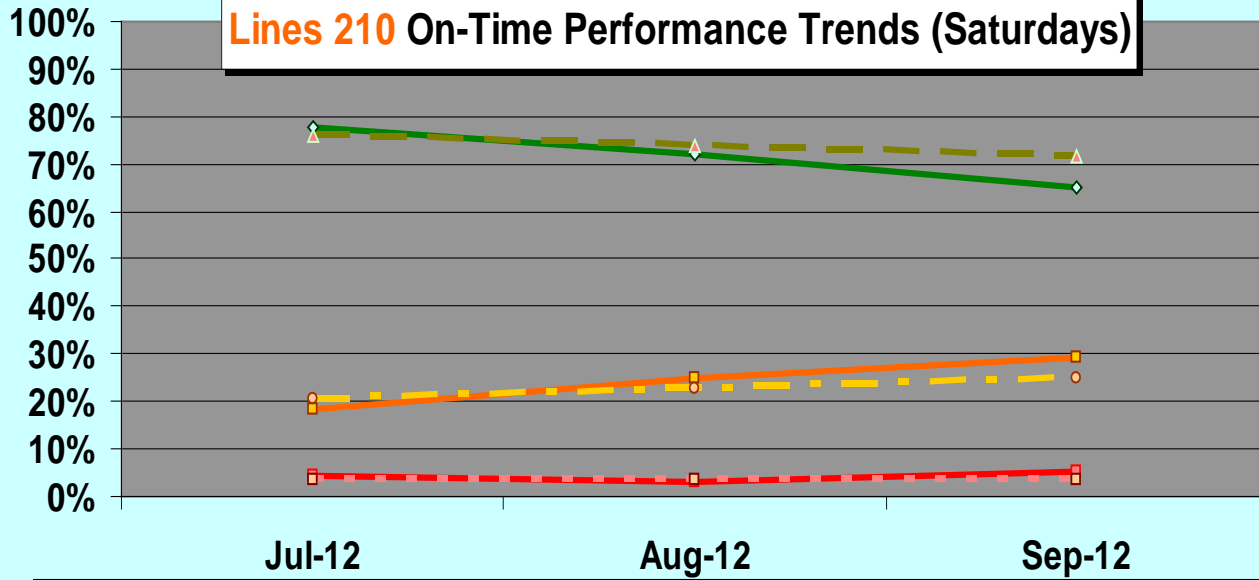


# SBC Service Council November 2012 Meeting

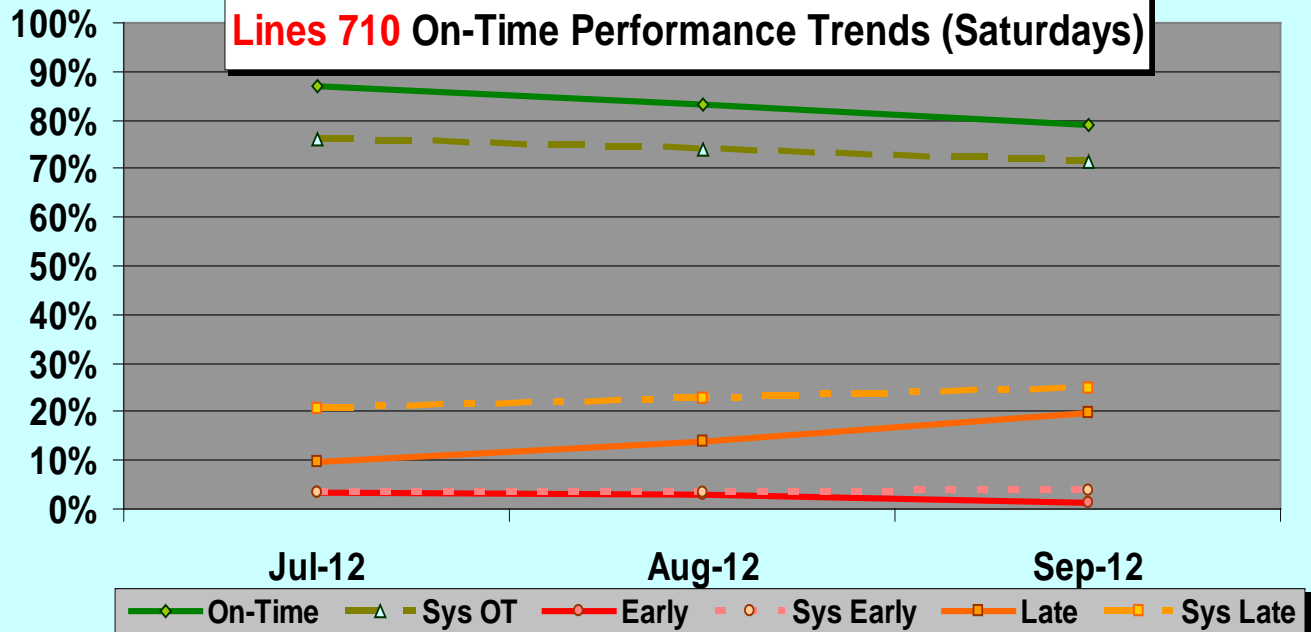


# SBC Service Council November 2012 Meeting

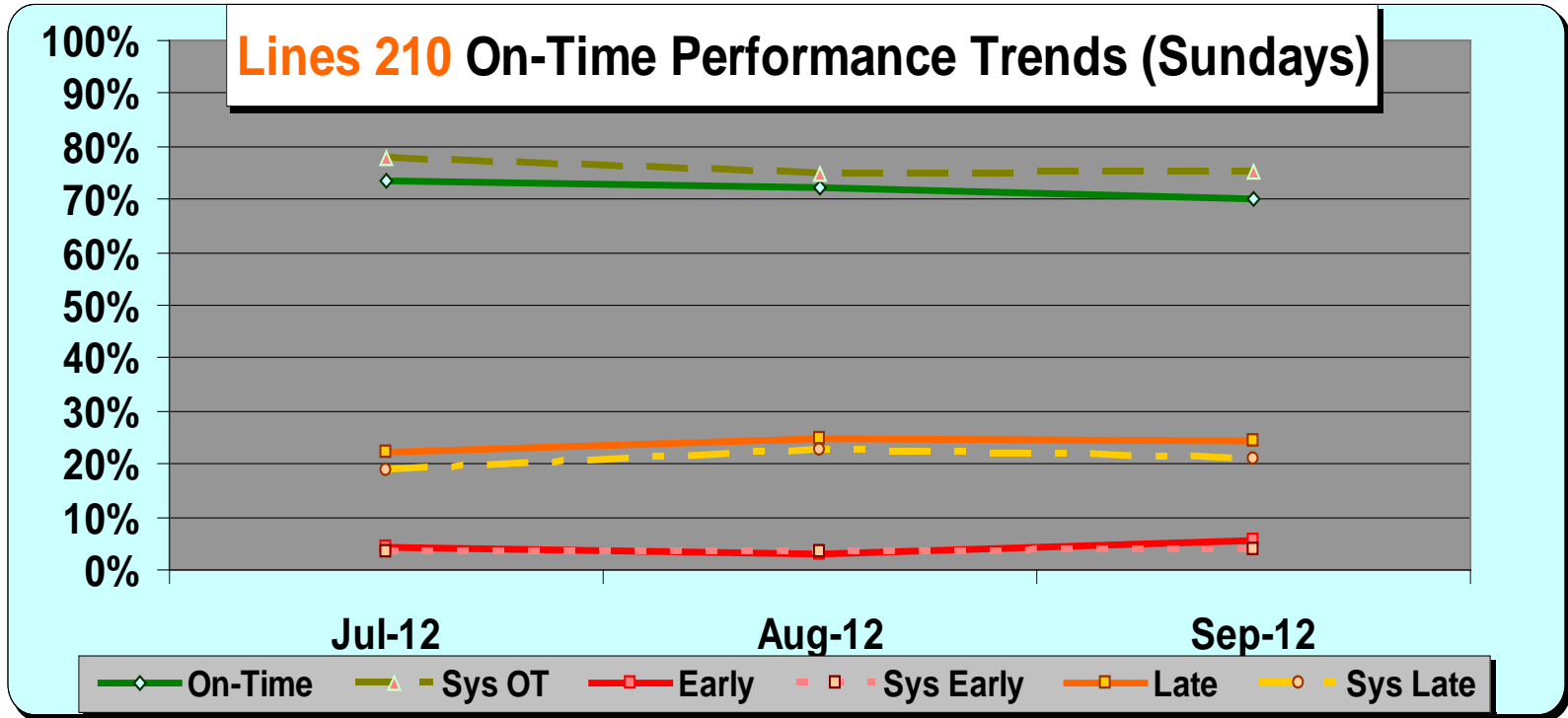
**Lines 210 On-Time Performance Trends (Saturdays)**



**Lines 710 On-Time Performance Trends (Saturdays)**



# SBC Service Council November 2012 Meeting



## DISCUSSION