

# **CORPORATE SAFETY REPORT**

## **METRO BOARD MEETING**

**Vijay Khawani**

**Executive Officer, Corporate Safety**

**Sept 27, 2012**

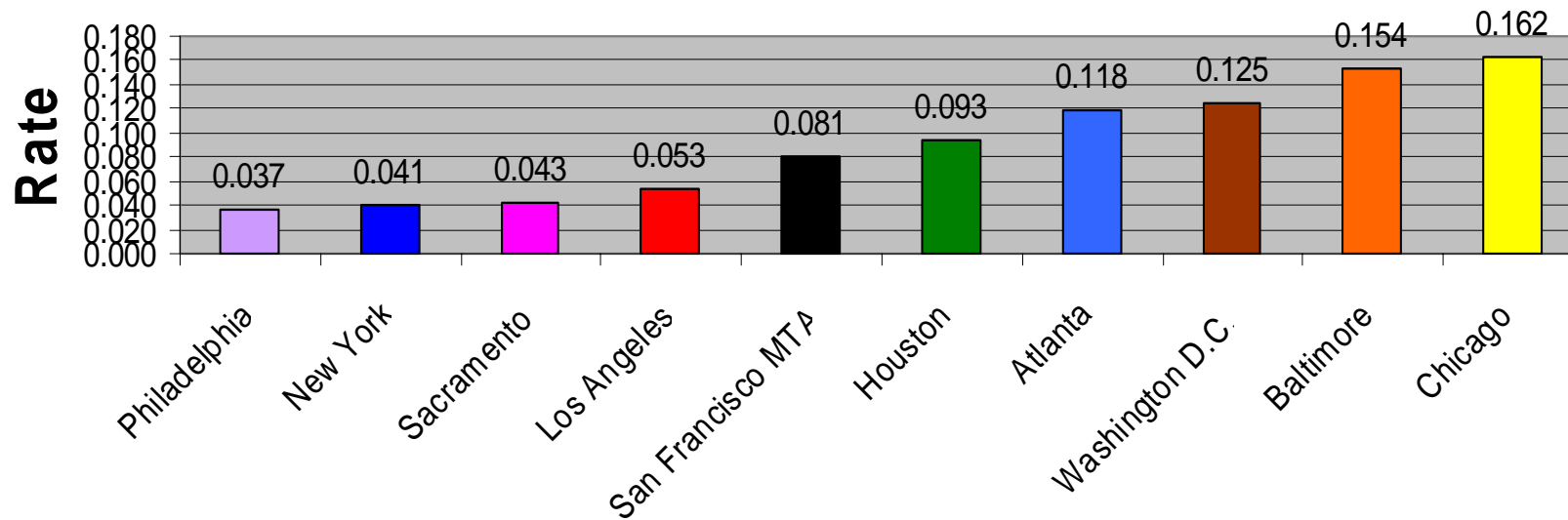


**Metro**

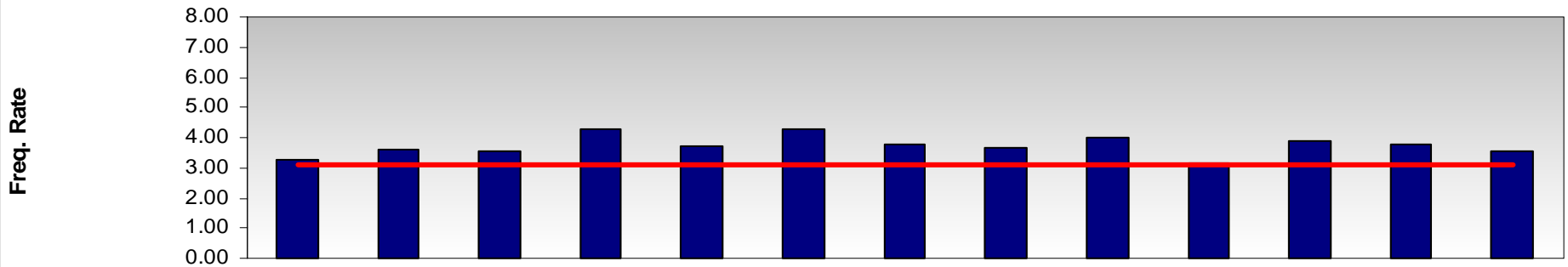
# National Transit Database

## Bus Collision Rates (100,000 Hub Miles)

### CY12 YTD (Jan 1, 2012 through April 30, 2012)

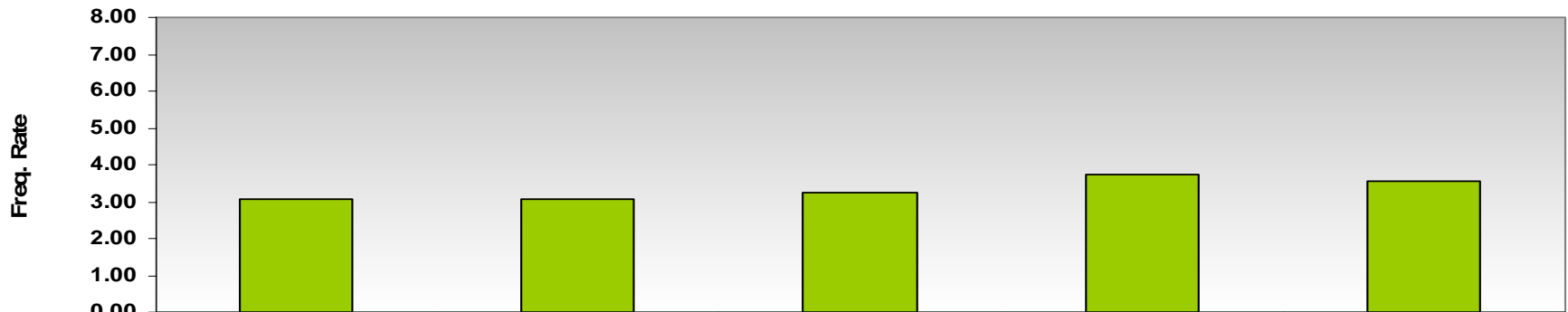


### Bus Accidents Per 100,000 Hub Miles



	Jul-11	Aug-11	Sep-11	Oct-11	Nov-11	Dec-11	Jan-12	Feb-12	Mar-12	Apr-12	May-12	Jun-12	Jul-12
<b>Sys. Freq.</b>	3.27	3.63	3.52	4.28	3.72	4.26	3.78	3.67	3.99	3.16	3.88	3.80	3.54
<b>Sys. Goal</b>	3.10												3.10

### Bus Accidents Per 100,000 Hub Miles



	FY09	FY10	FY11	FY12	FY13 YTD
<b>Series1</b>	3.06	3.08	3.23	3.72	3.54

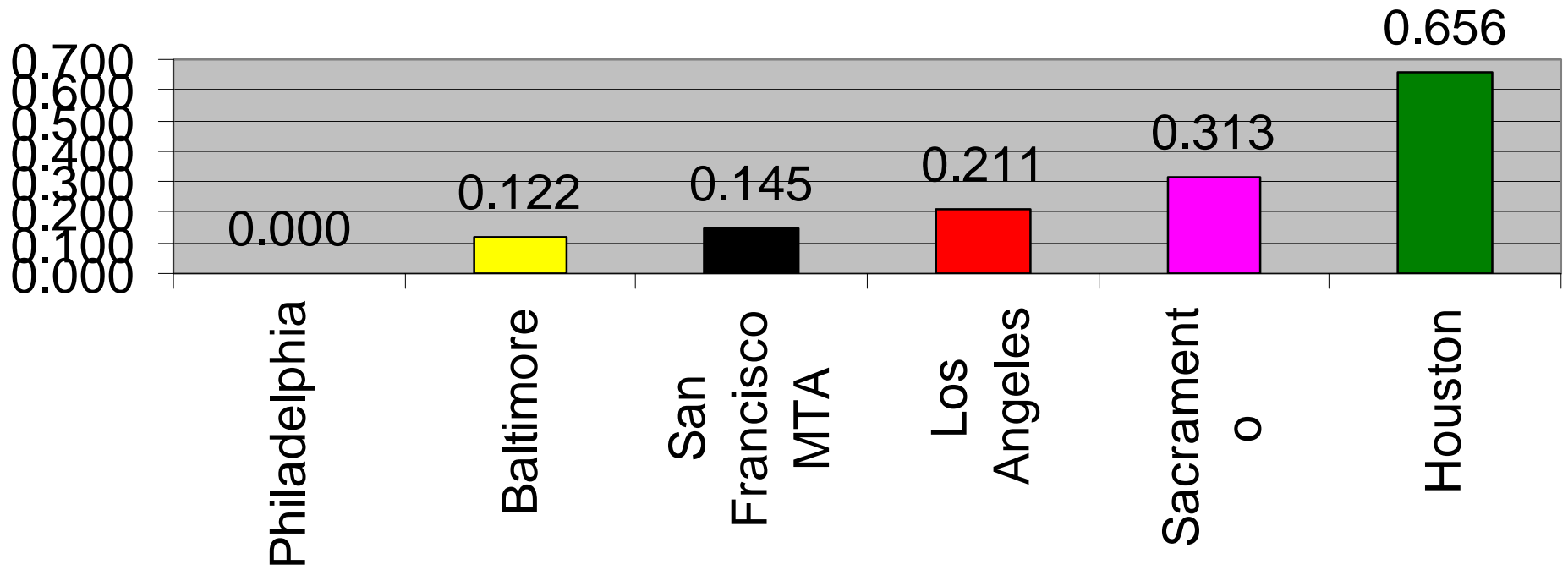


**Metro**

# National Transit Database

## Light Rail Collision Rates (100,000 Vehicle Miles)

### CY12YTD (January 1, 2012 through April 30, 2012)

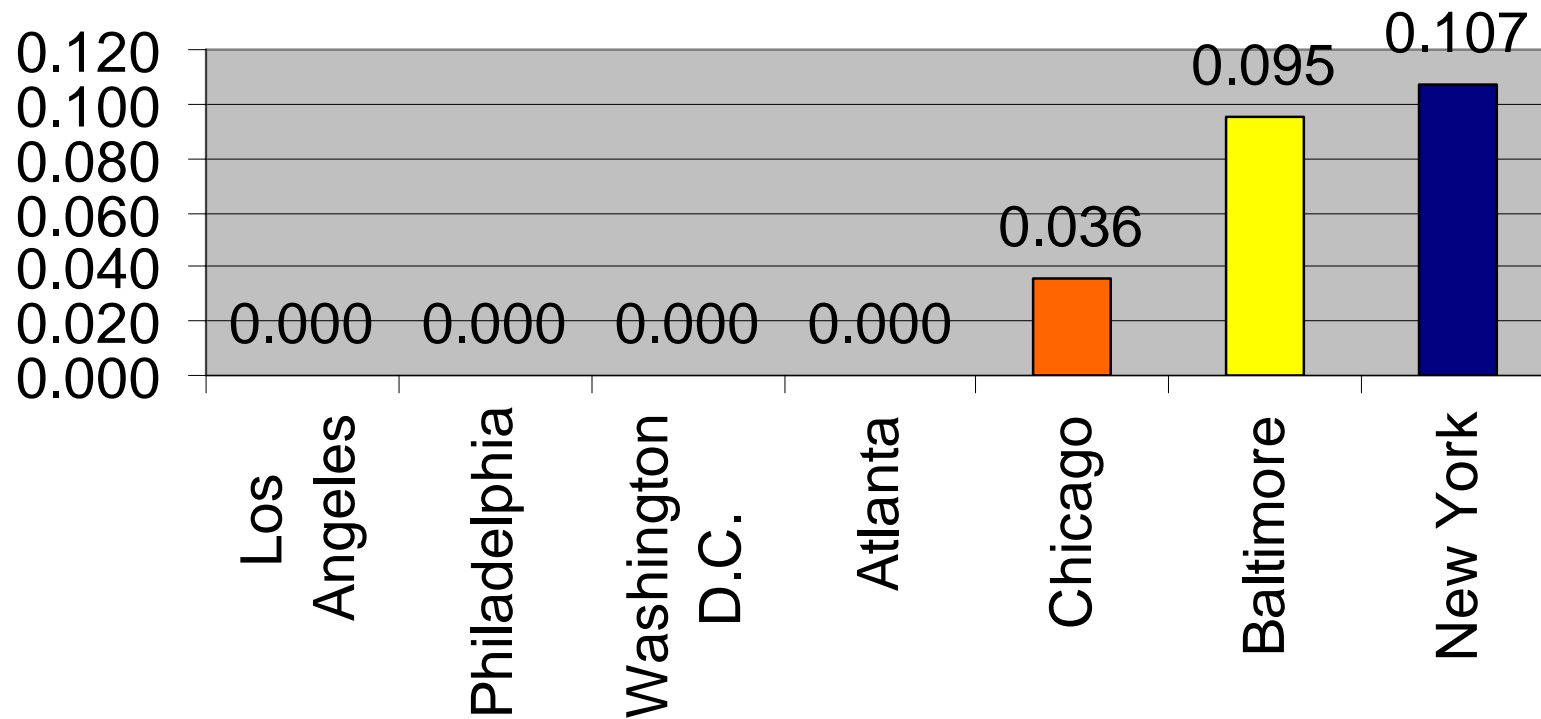


**Metro**

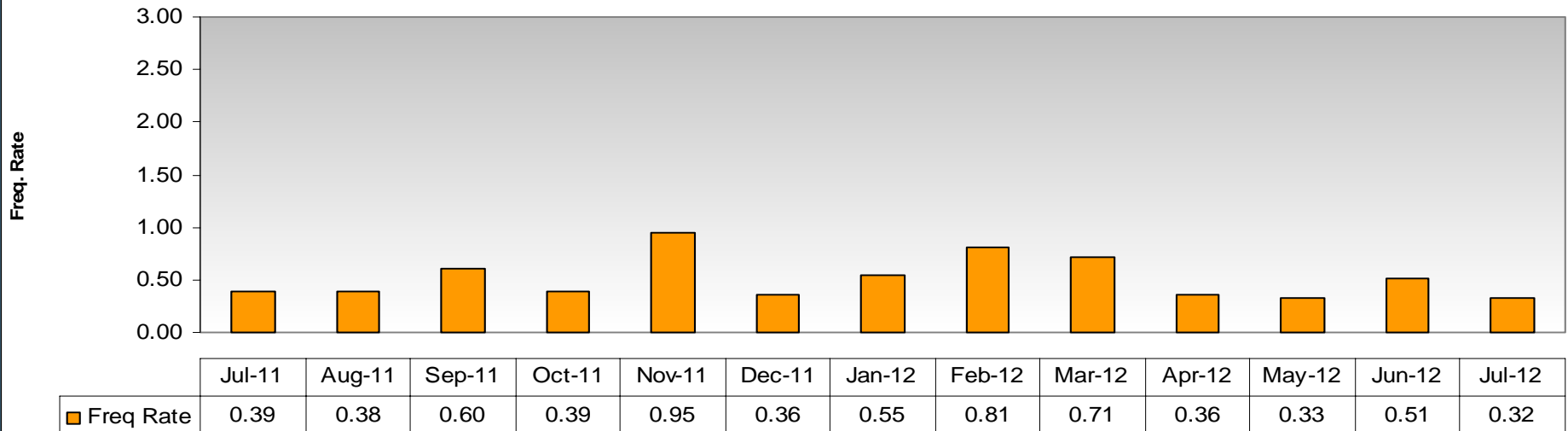
# National Transit Database

## Heavy Rail Collision Rates (100,000 Vehicle Miles)

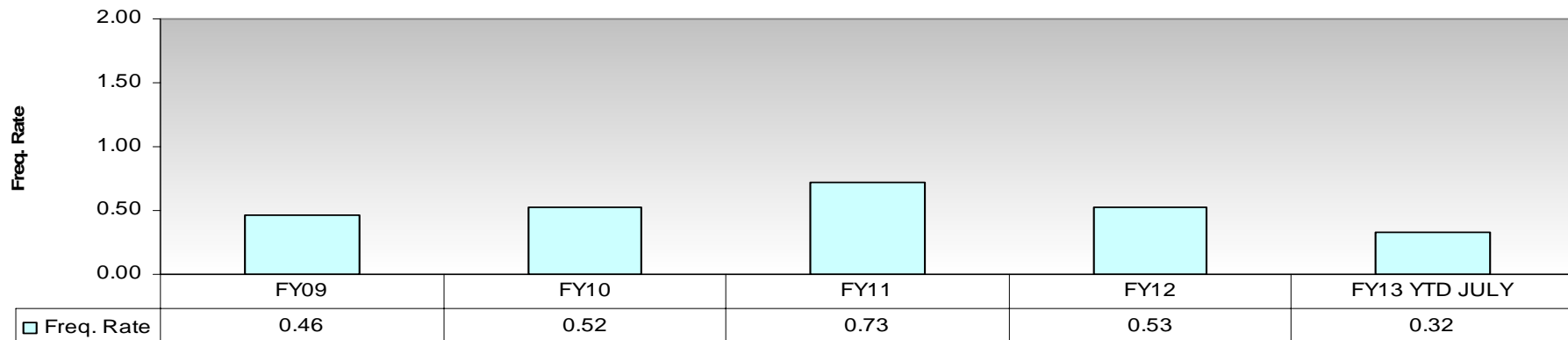
### CY12YTD (January 1, 2012 through April 30, 2012)



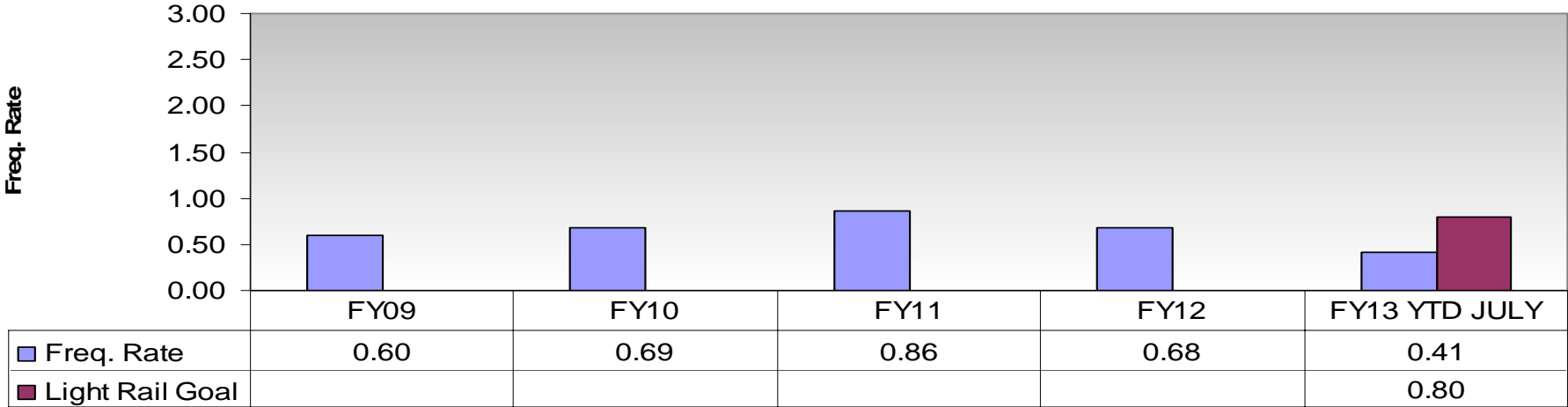
### Rail Accidents Per 100,000 Train Miles



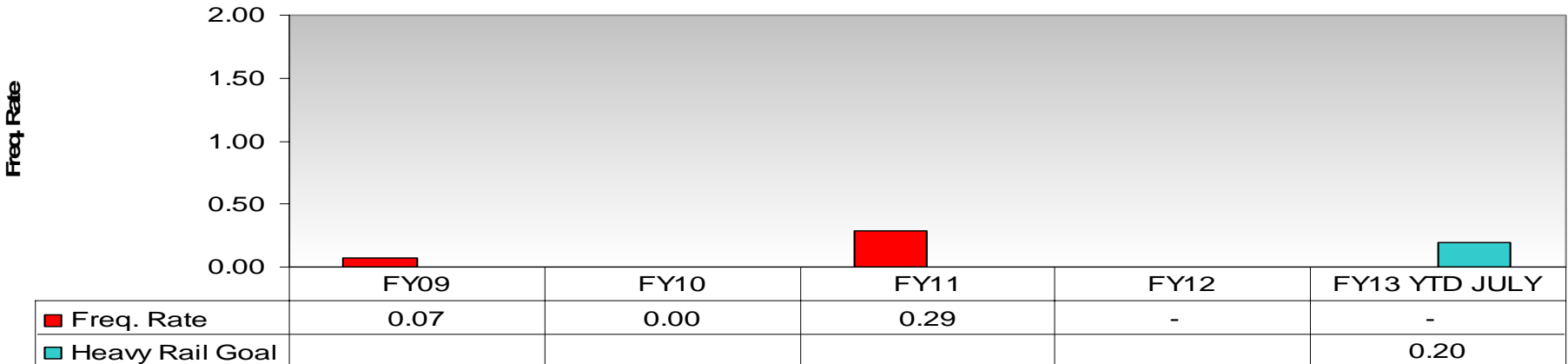
### Systemwide Rail Accidents Per 100,000 Train Miles



### Light Rail Accidents Per 100,000 Train Miles

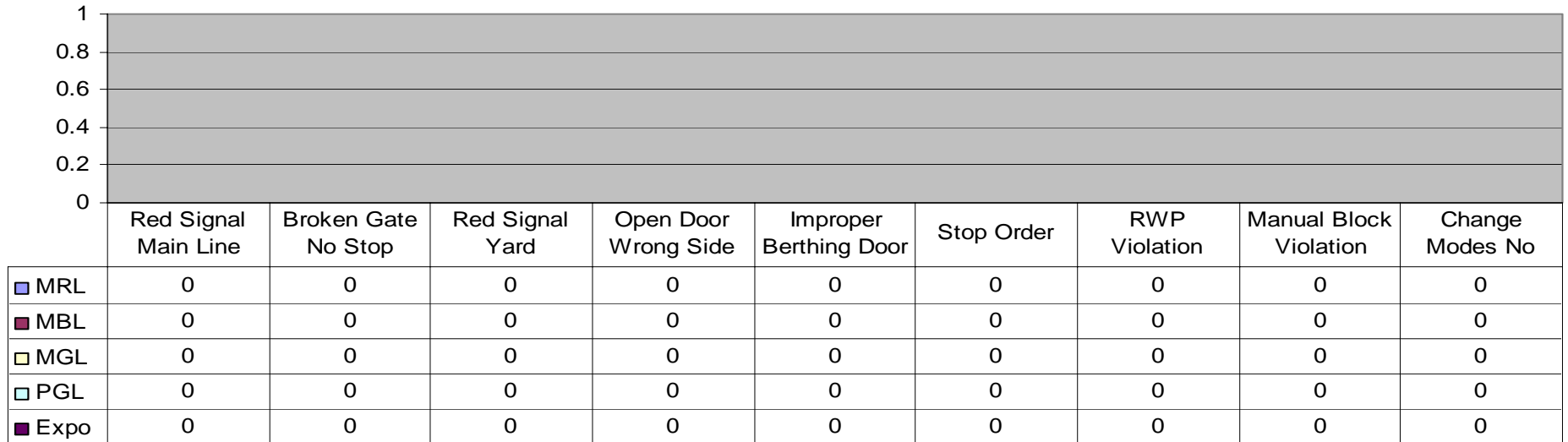


### Heavy Rail Accidents Per 100,000 Train Miles

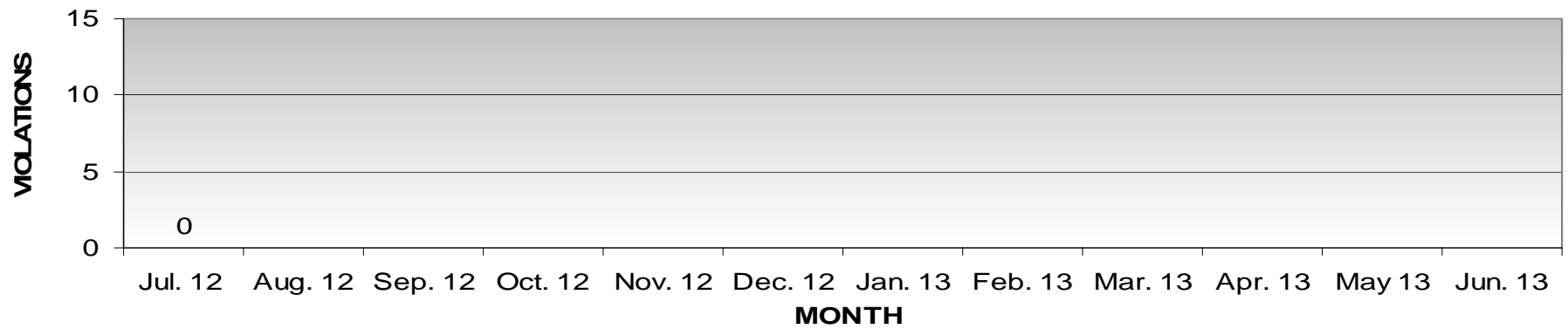


**Metro**

### Rail Systemwide Safety Incidents FY13 YTD (as of July)

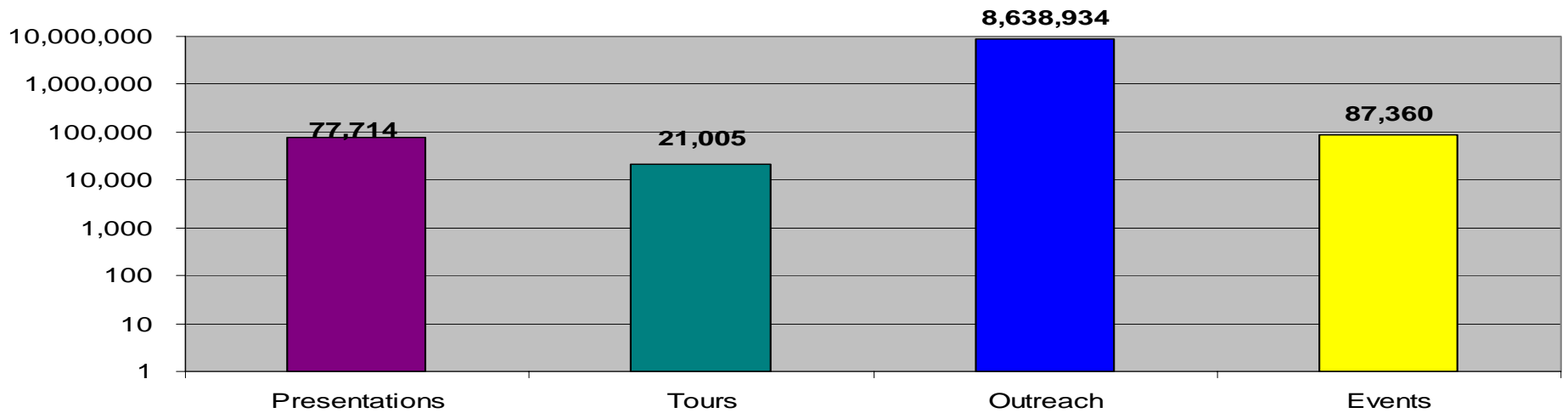


### RAIL RED SIGNAL VIOLATIONS ON MAIN LINE FY13 YTD (as of July)

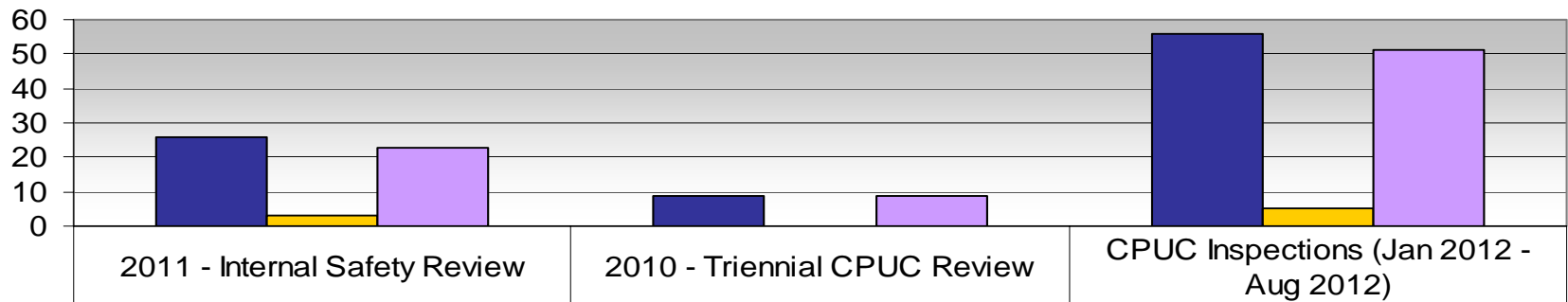




### Rail Safety Education and Outreach Number of People Reached - July 2011 to July 2012



### Status of Corrective Action Plans



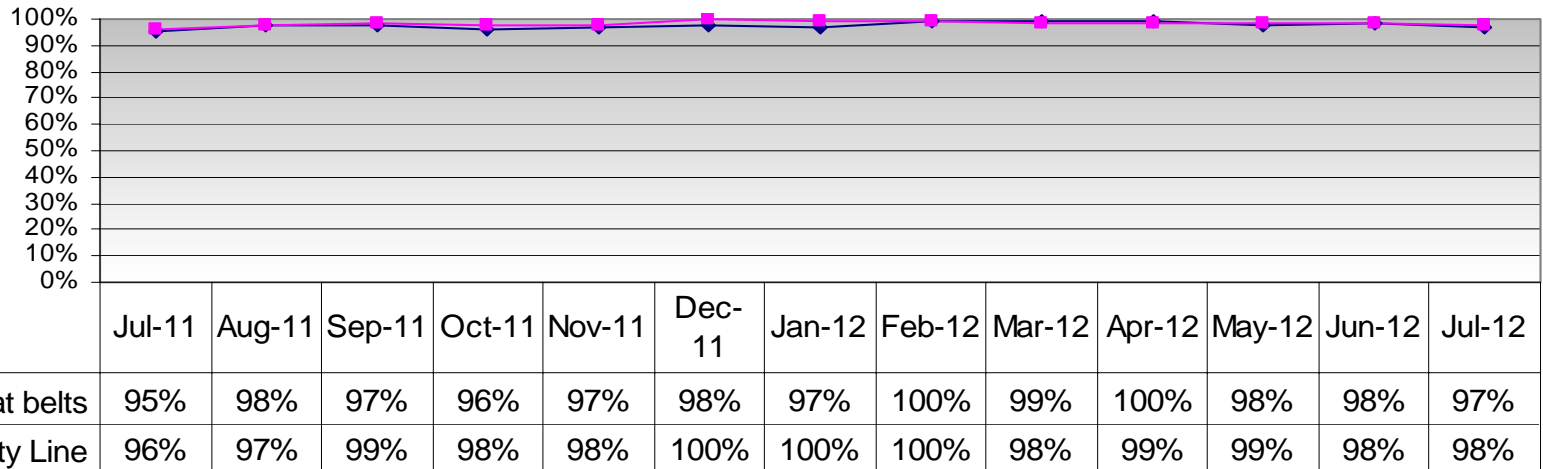
■ Total Findings	26	9	56
■ Open	3	0	5
■ Closed	23	9	51



**Metro**

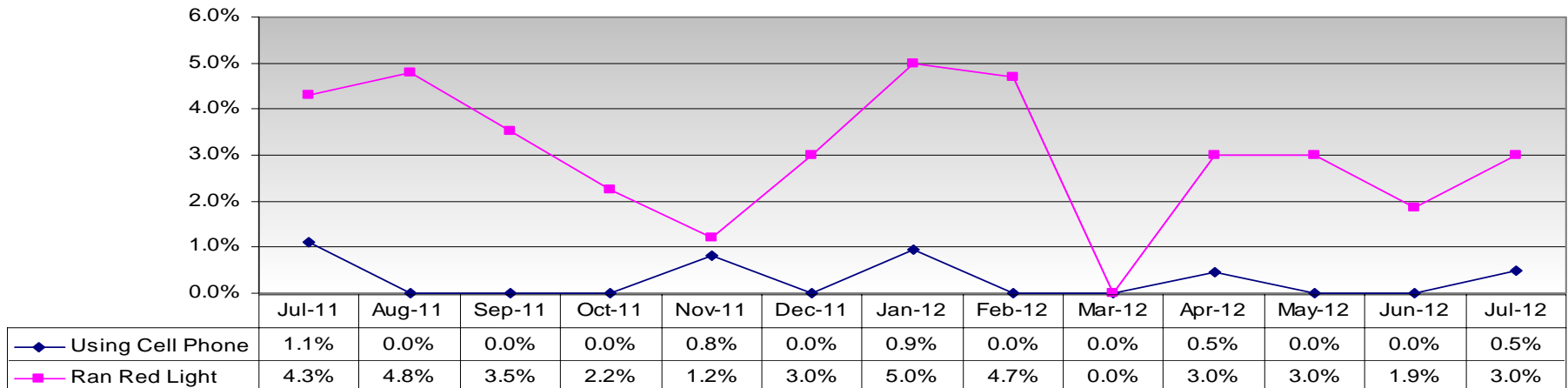
## Did Operator Wear Seat Belt & Were all Passengers Behind Safety Line before Bus Was Moved?

Relative Frequency



## Cell Phone/Electronic Device Used & Did Operator Run a Red Light?

Relative Frequency



**Metro**