

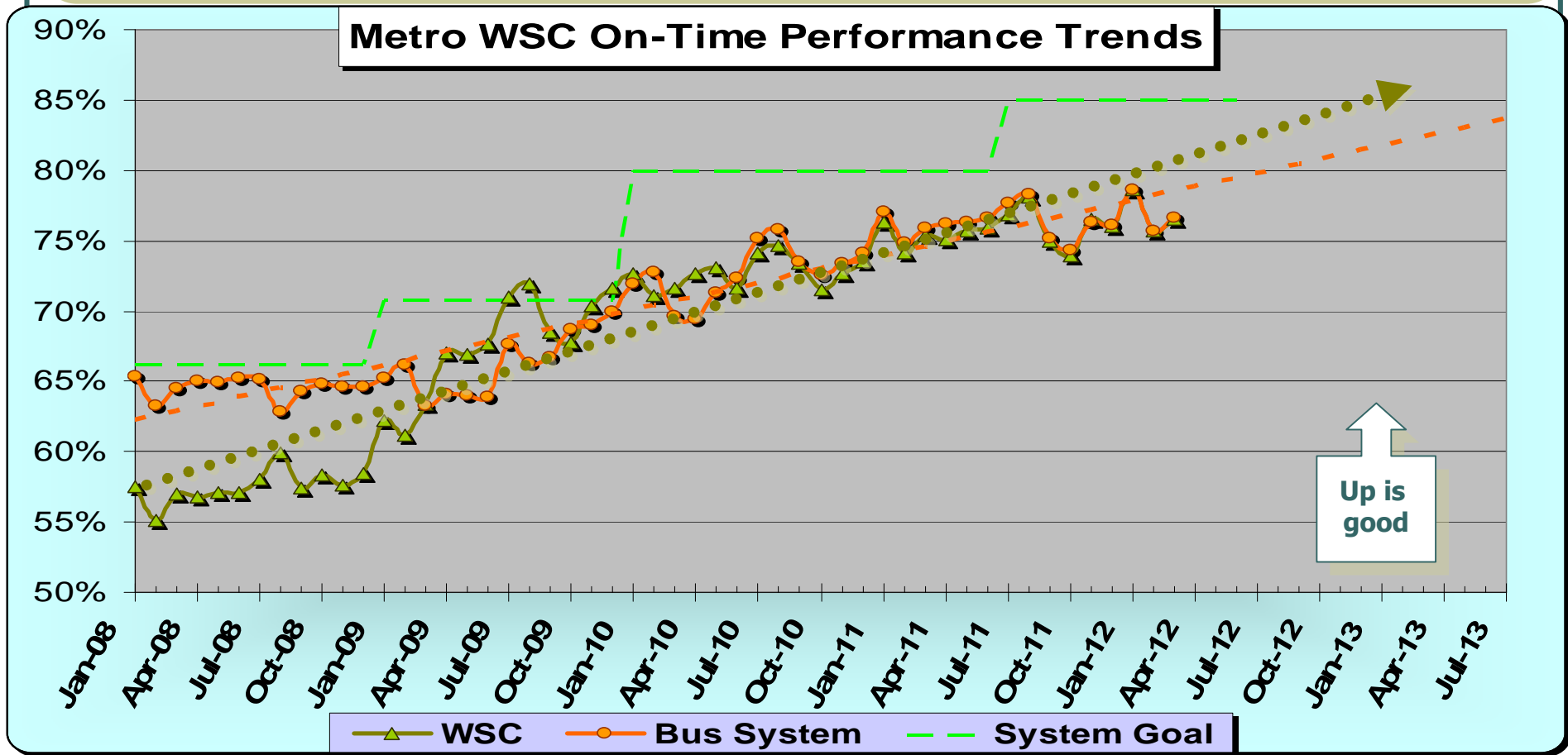
***Metro Westside/Central
Service Council
May 9, 2012 Meeting***

***Performance Report on
March 2012 Service***



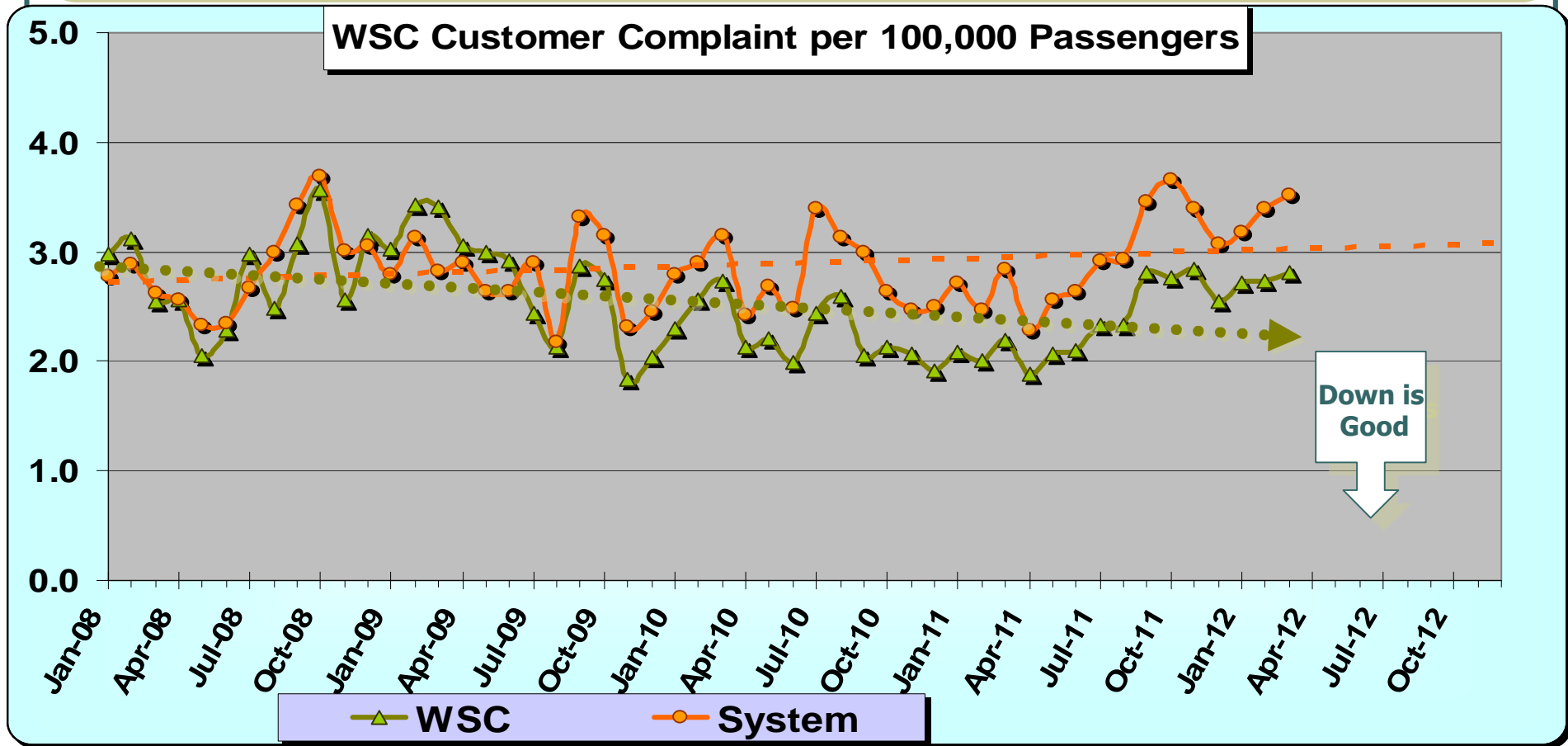
WSC Service Council May 2012 Meeting

		Target	March	YTD
<u>On Time Performance</u>	Metro Bus System	85.0%	76.6%	76.6%
	Westside/Central	85.0%	76.6%	76.4%



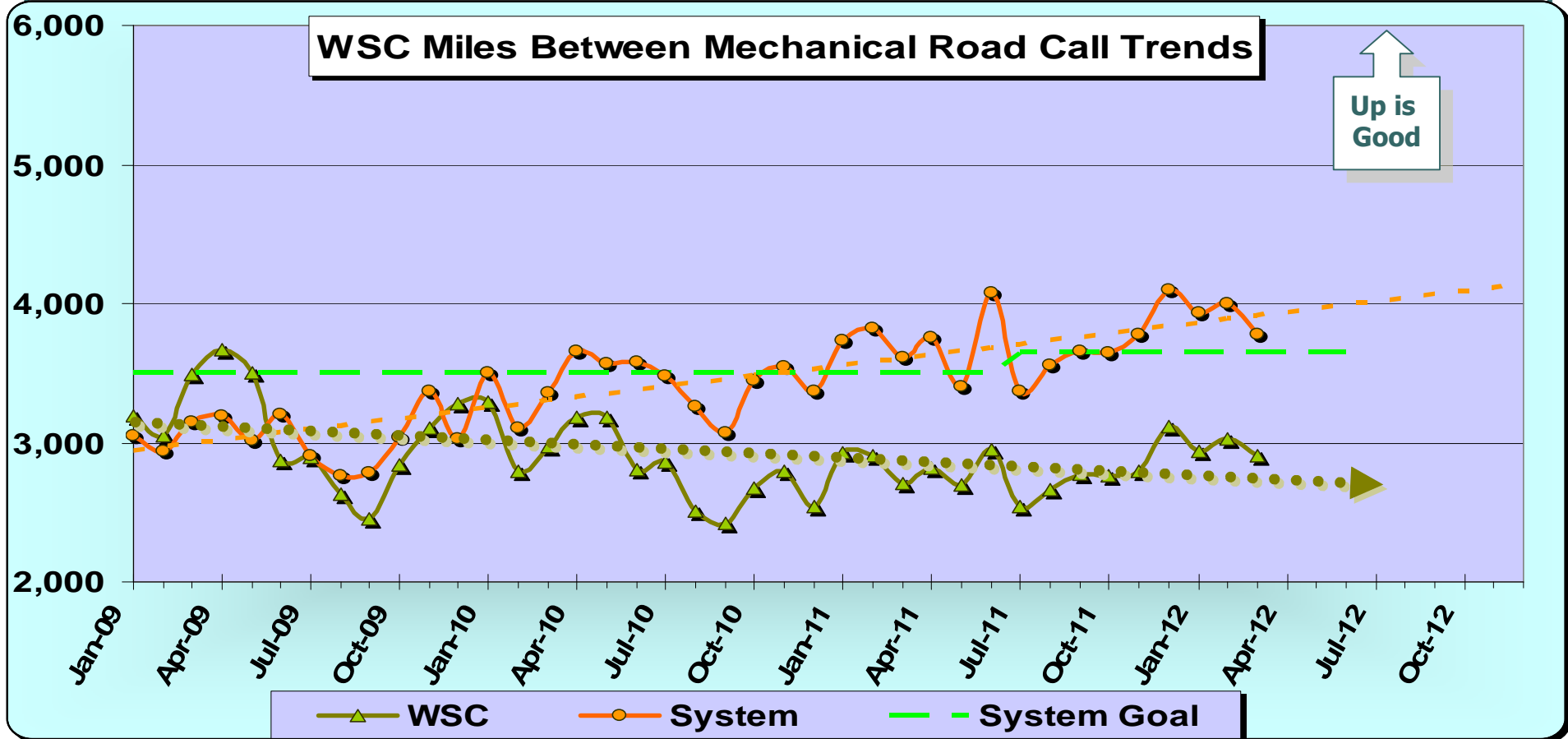
WSC Service Council May 2012 Meeting

		Target	March	YTD
Complaints / 100,000 Psgrs.	Metro Bus System	2.20	3.52	3.29
	Westside/Central	2.04	2.80	2.65



WSC Service Council May 2012 Meeting

<u>Miles / Mech.</u> <u>Road Call</u>		Target	March	YTD
Metro Bus System		3,650	3,775	3,757
Westside/Central		3,650	2,903	2,826



WSC Service Council May 2012 Meeting

Clean Bus Rating

Metro Bus System
Westside/Central

Target

March

YTD

8.0

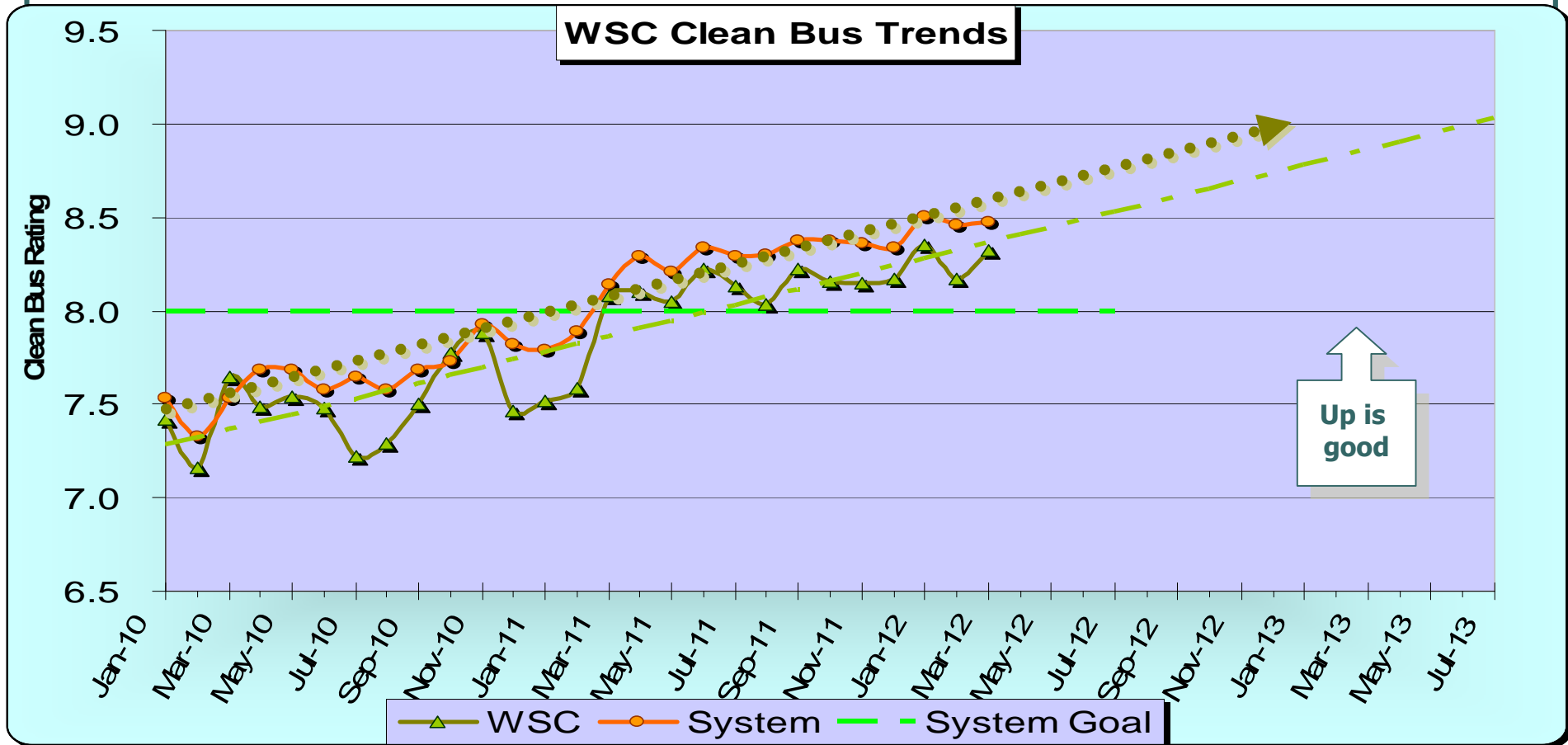
8.48

8.39

8.0

8.32

8.19



WSC Service Council May 2012 Meeting

**Accidents /
100,000 Miles**

Metro Bus System

Target

March

YTD

3.20

3.99

3.78

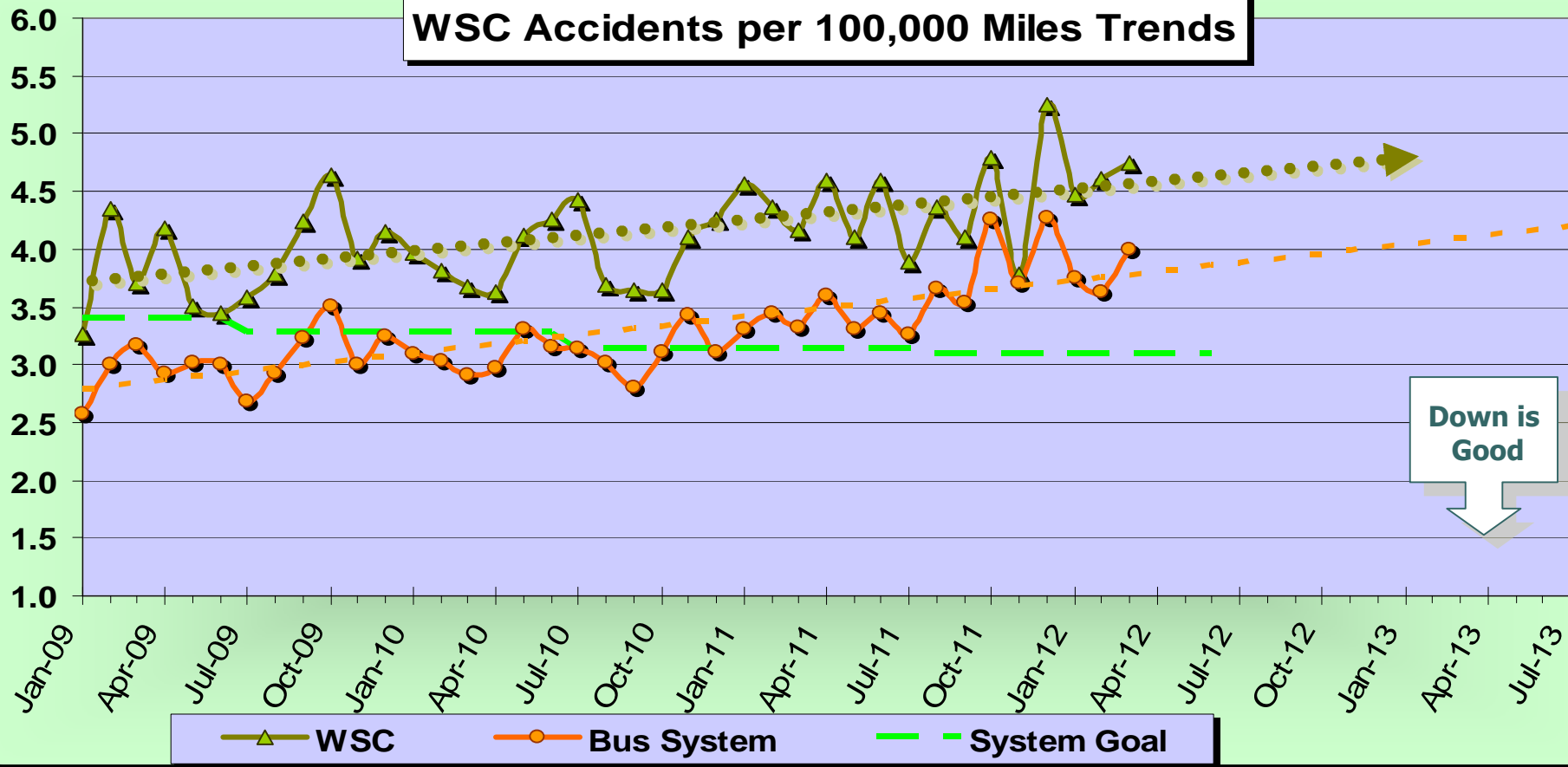
Westside/Central

3.53

4.75

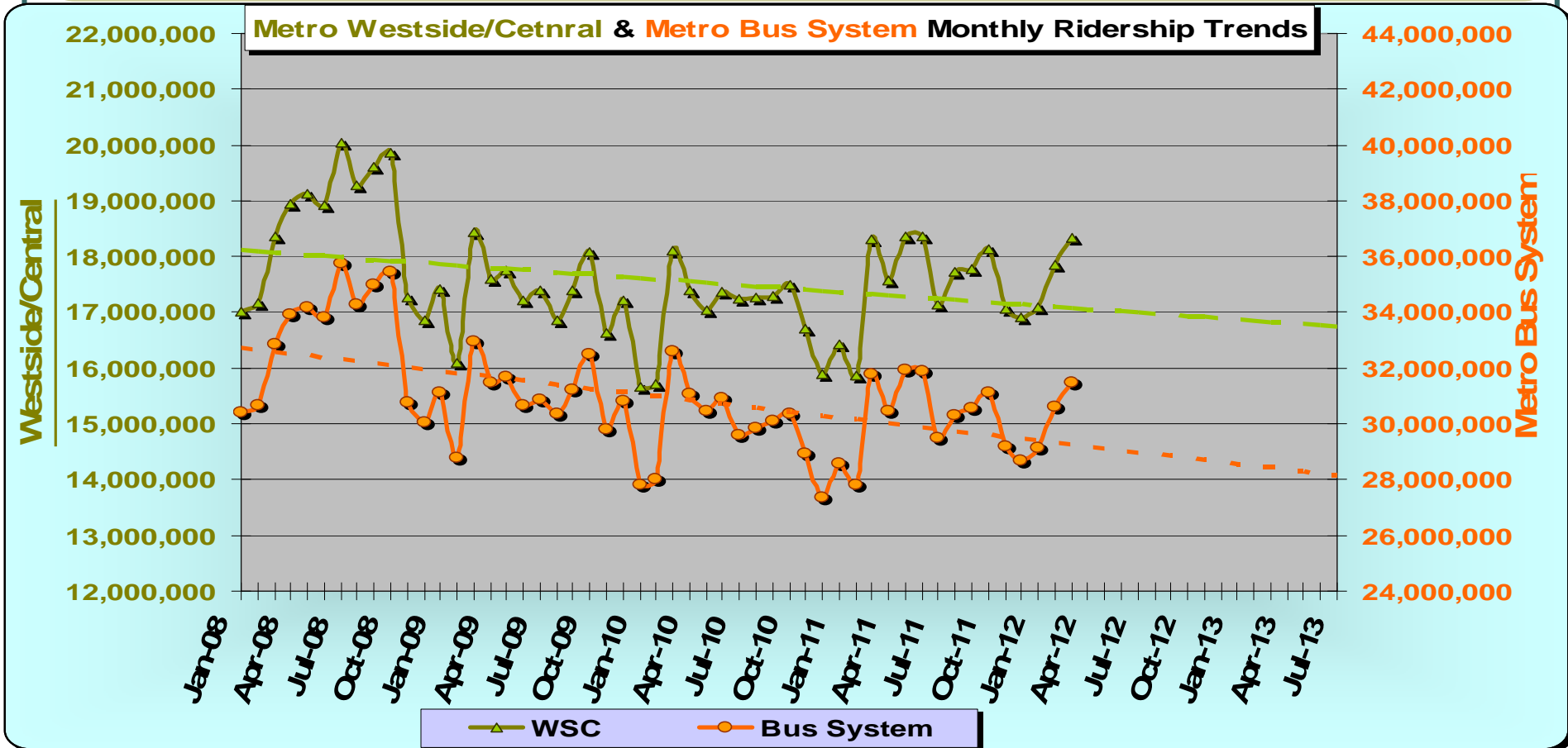
4.45

WSC Accidents per 100,000 Miles Trends



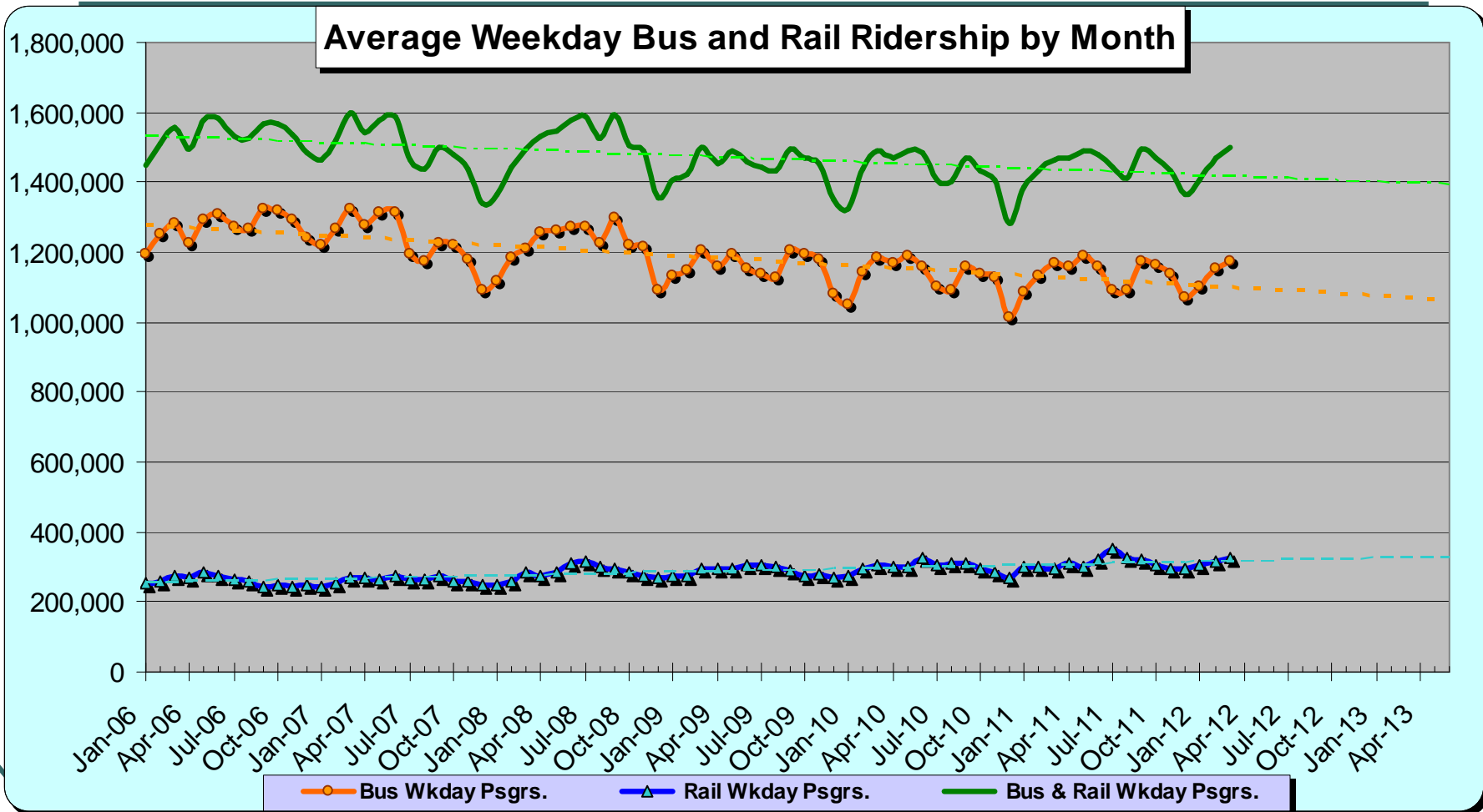
WSC Service Council May 2012 Meeting

		Target	March	YTD
Monthly Bus Ridership	Metro Bus System	29,270,000	31,470,000	30,060,000
	Westside/Central	16,890,000	18,340,000	17,560,000



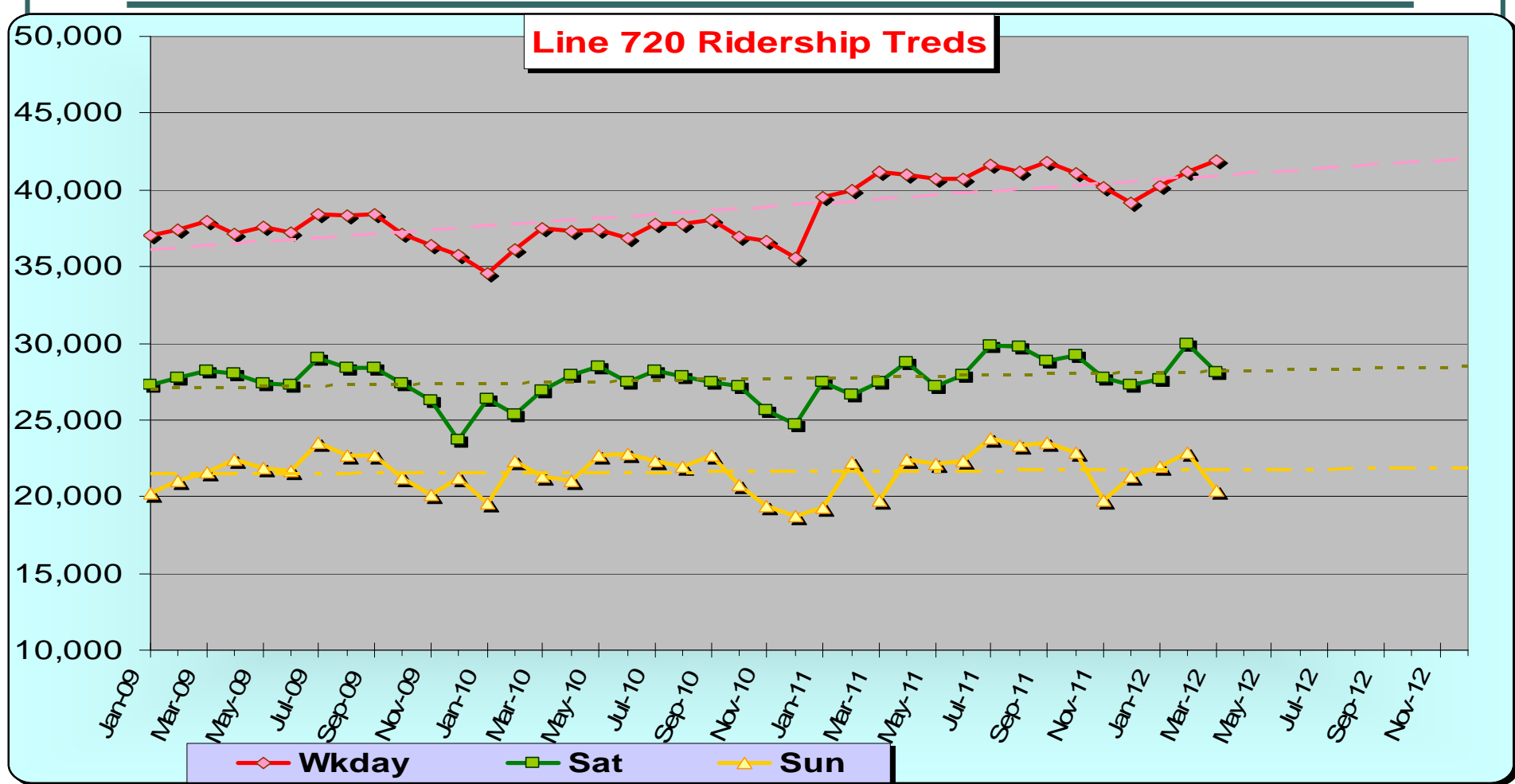
WSC Service Council May 2012 Meeting

Avg. Daily Ridership Bus and Rail Ridership



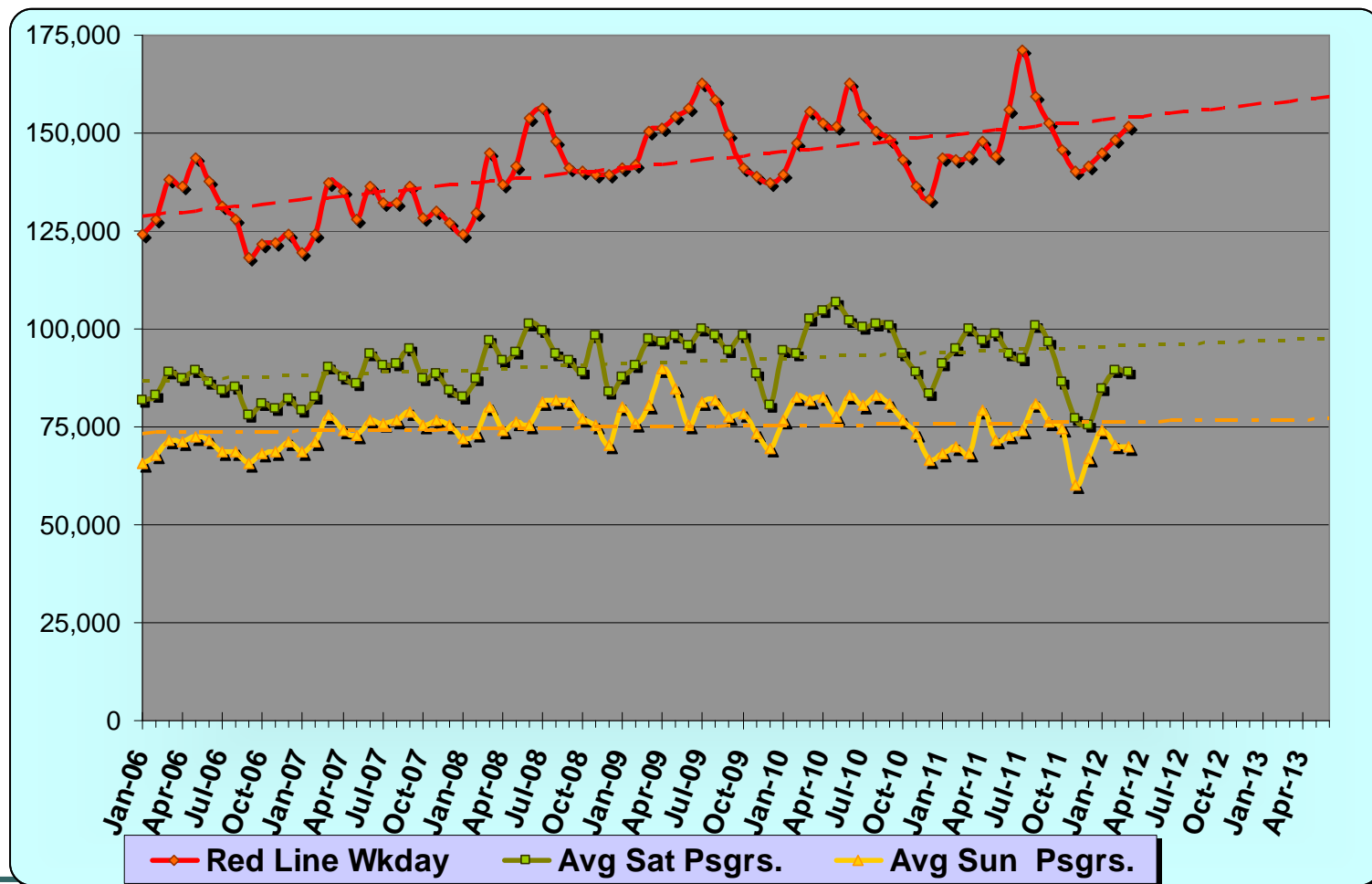
WSC Service Council May 2012 Meeting

Metro **Line 720** Ridership Trends



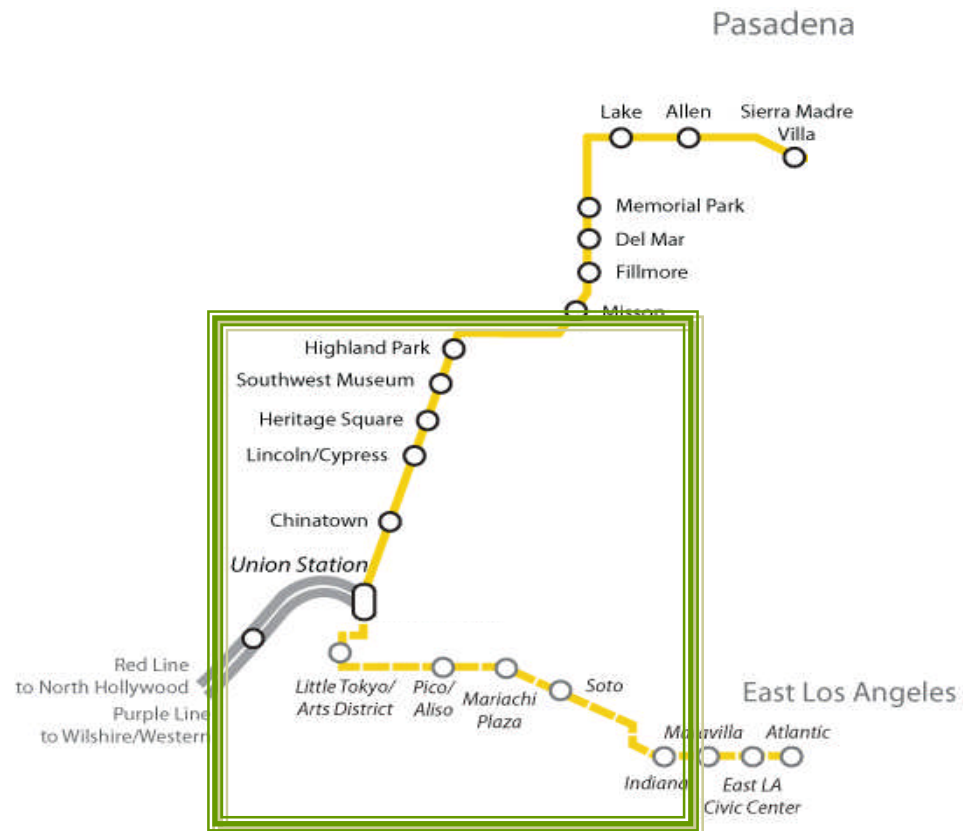
WSC Service Council May 2012 Meeting

Metro **Red/Purple Line** Ridership Trends



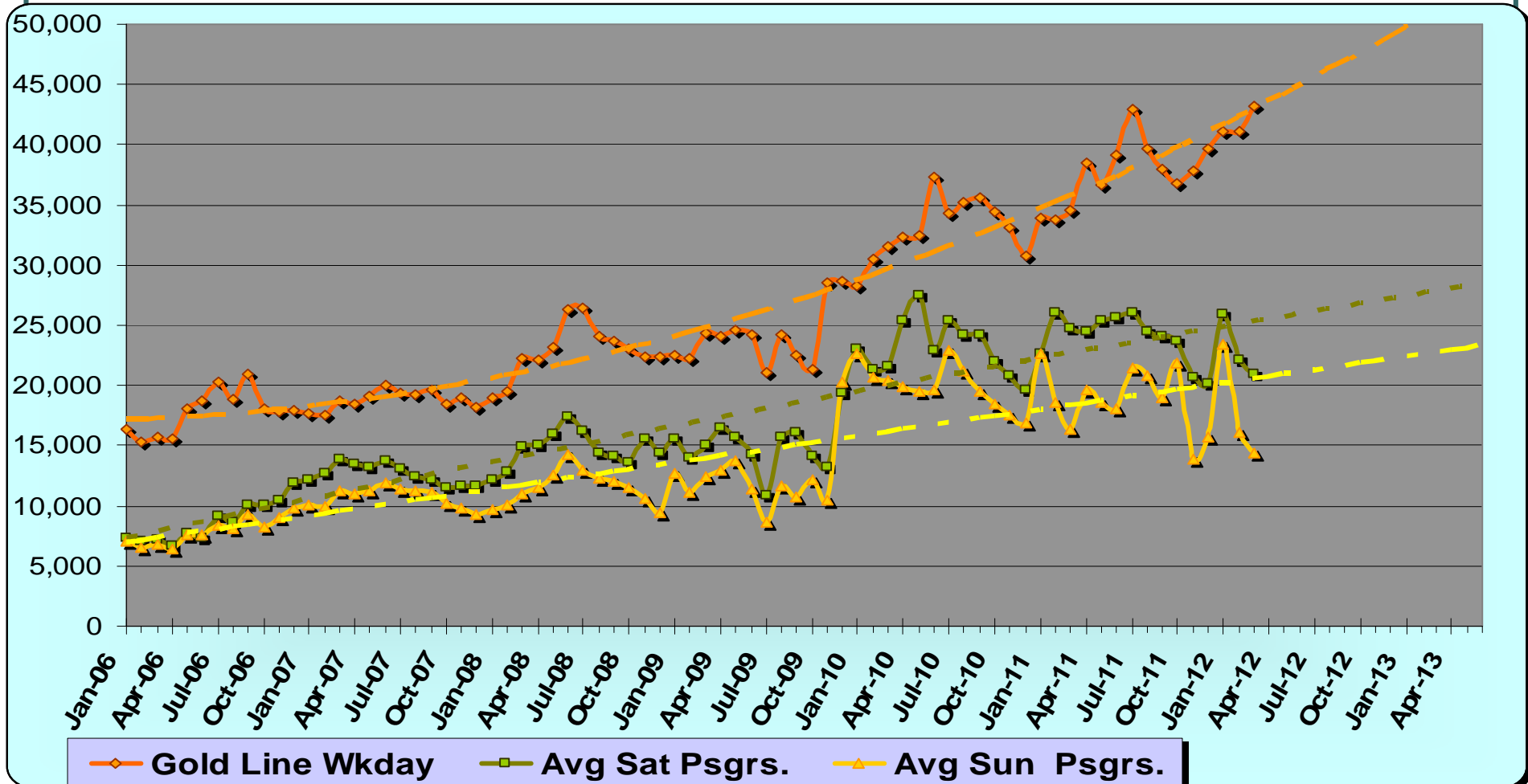
WSC Service Council May 2012 Meeting

Metro Gold Line



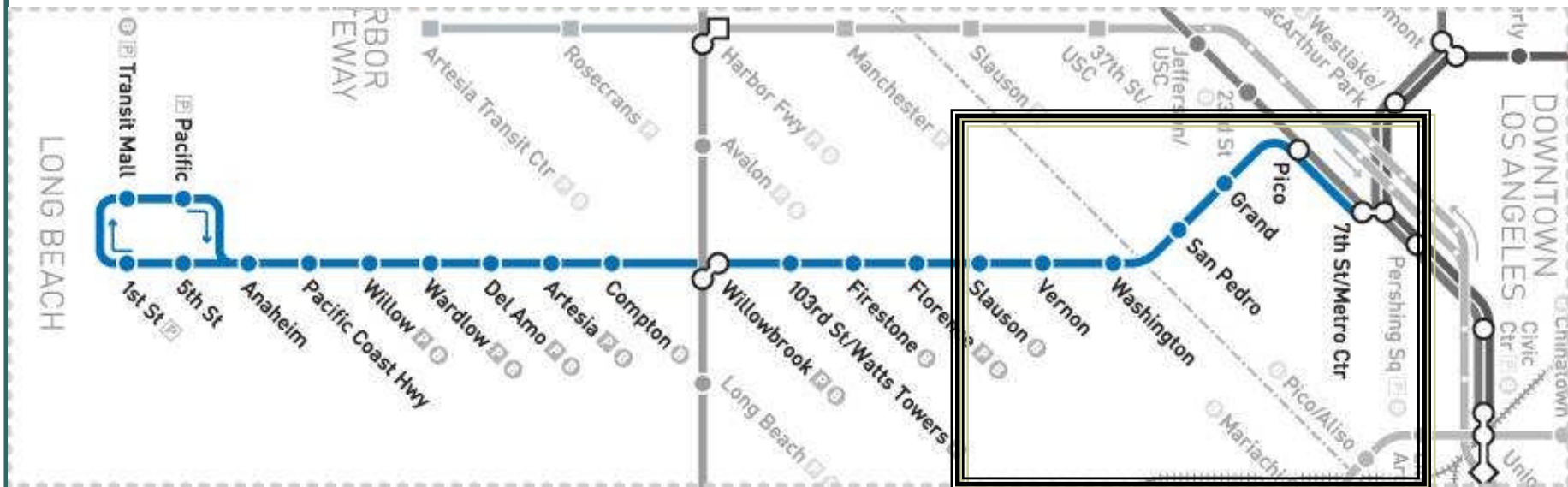
WSC Service Council May 2012 Meeting

Metro Gold Line Ridership Trends



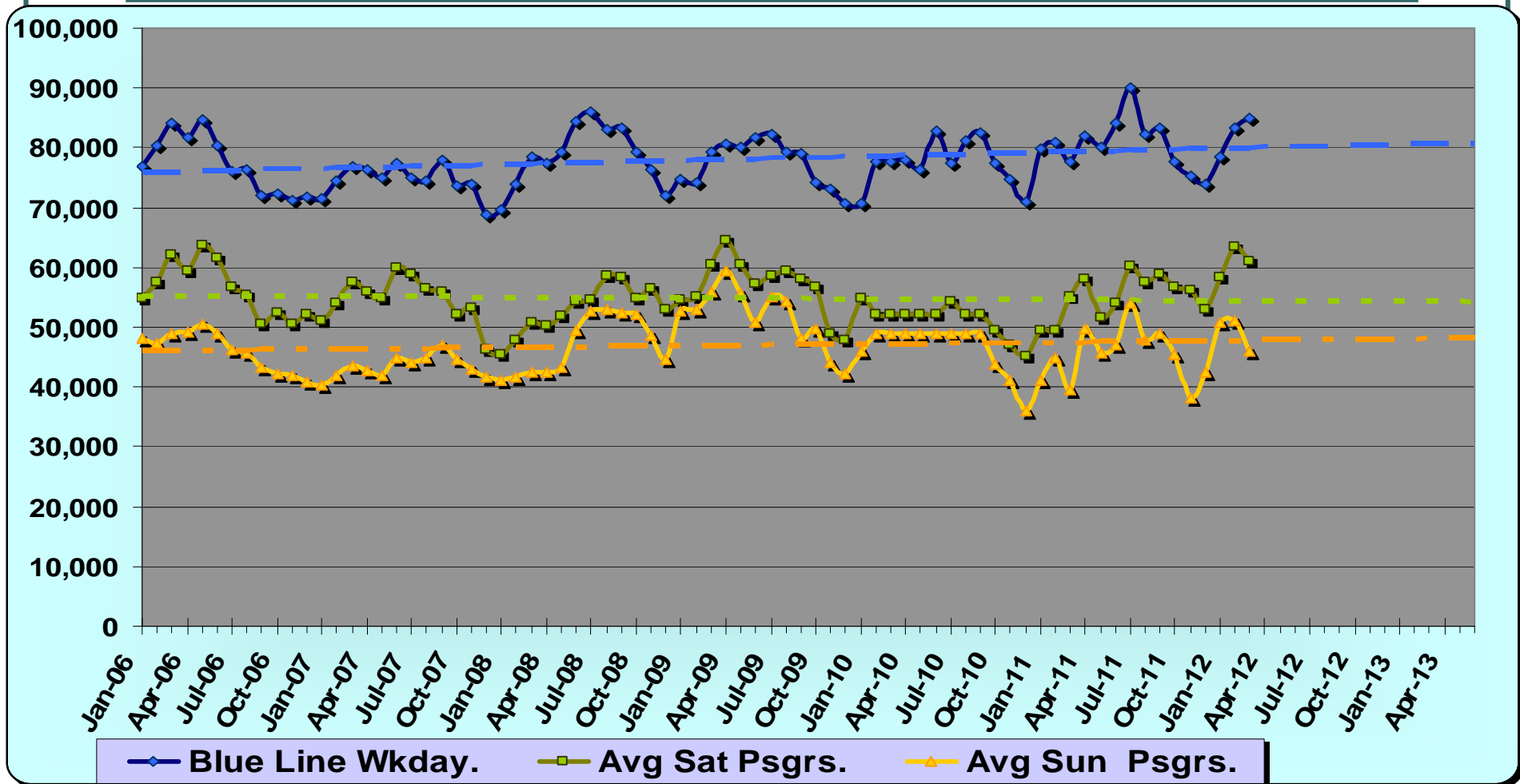
WSC Service Council May 2012 Meeting

Metro Blue Line



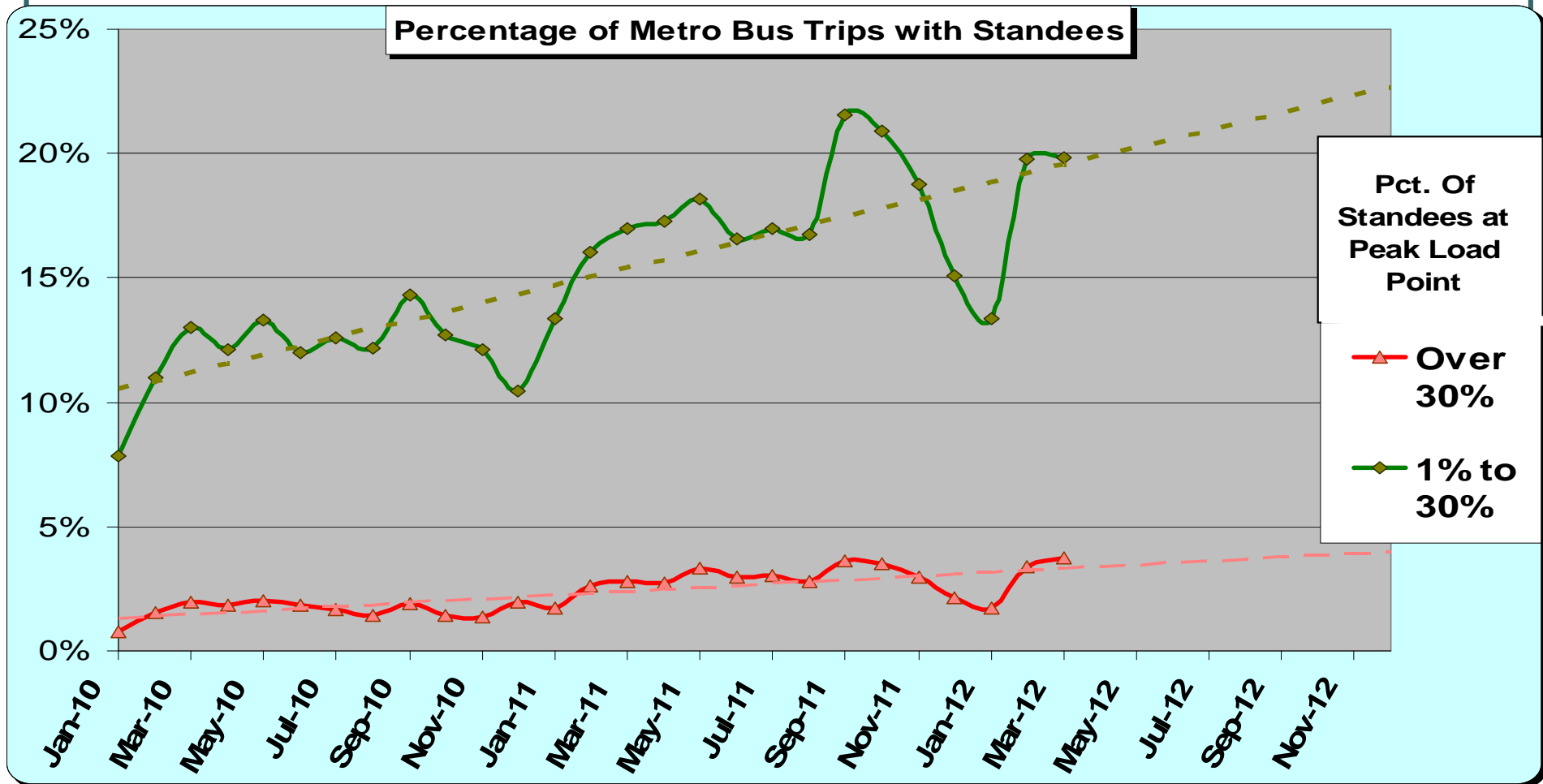
WSC Service Council May 2012 Meeting

Metro Blue Line Ridership Trends



WSC Service Council May 2012 Meeting

Metro Bus Trips with Standees



WSC Service Council May 2012 Meeting

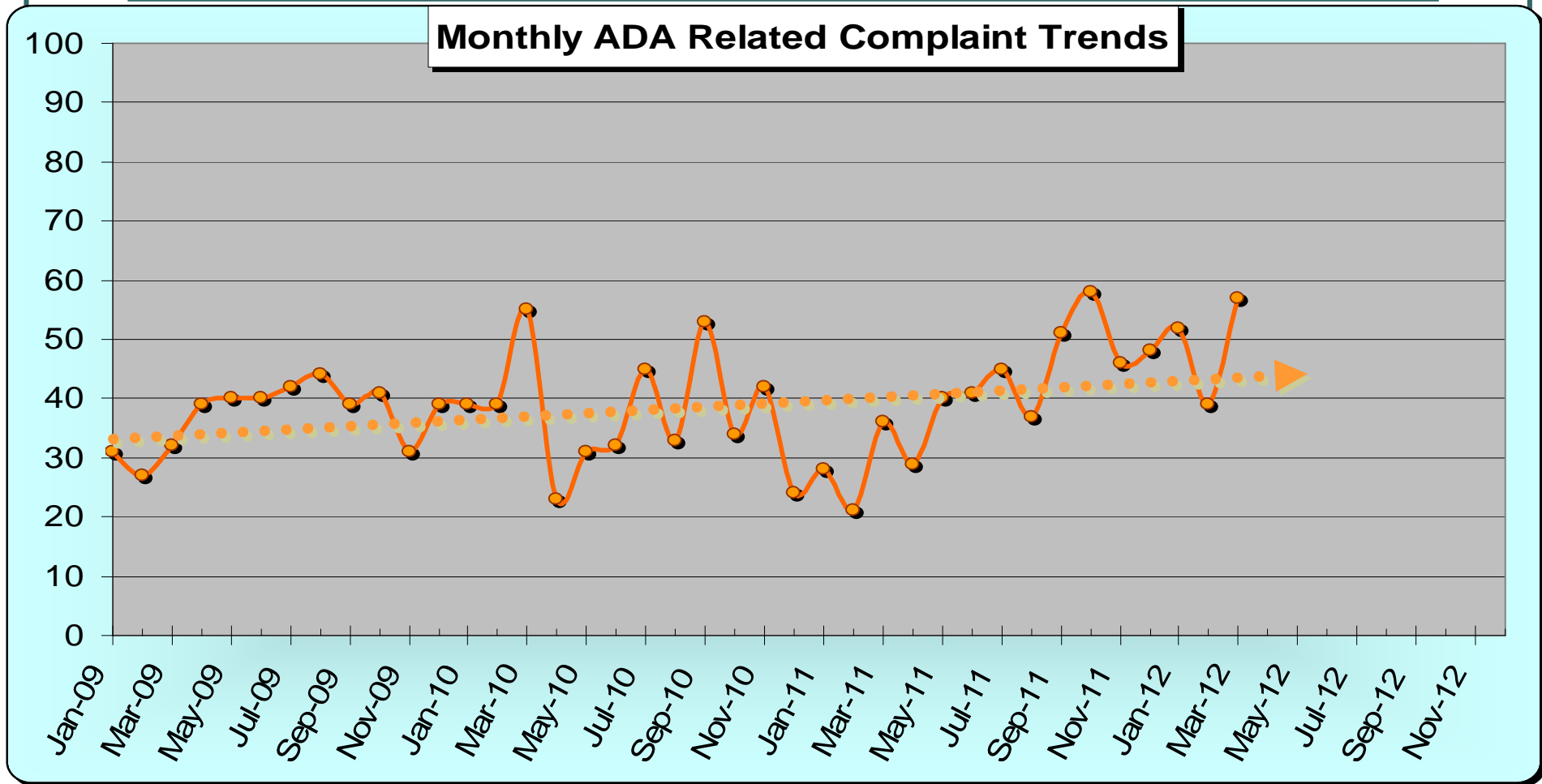
Bus Station Cleanliness Evaluation Scores

Bus Stations Evaluated	Dec. 2011	Mar. 2012	Change	Agency
	Score	Score		
Artesia Blue Line Bus Sta.	7.4	6.4	-1.1	Metro
Aviation Green Line Bus Sta.	6.1	8.3	2.3	Metro
Burbank Metrolink Bus Sta.	8.5	8.5	0.0	Burbank
Culver City Sta.	7.6	7.1	-0.4	Culver City
Cal State LA Busway Sta.	7.6	7.8	0.2	Metro
Cal State LA Local Bus Sta.	8.3	8.6	0.3	LADOT
Del Amo Blue Line Bus Sta.	8.4	7.9	-0.5	Metro
El Monte Bus Sta.	7.5	7.6	0.0	Metro
Harbor-Gateway Transit Ctr.	8.1	8.2	0.1	Metro
Inglewood Bus Sta.	8.4	8.2	-0.2	Inglewood
LAX City Bus Sta.	5.3	6.6	1.3	Metro
Norwalk Green Line Bus Sta.	7.2	8.3	1.0	Metro
North Hollywood Red Line Bus Sta.	7.1	7.4	0.3	Metro
Patsaouras Bus Plaza	8.2	6.8	-1.4	Metro
Pico-Rimpau Bus Ctr.	7.7	8.2	0.6	Metro
Rosa Parks Bus Sta.	7.8	8.1	0.3	Metro
South Bay Galleria Bus Ctr.	8.4	6.5	-1.9	Redondo Beach
Sierra Madre Gold Line Bus Sta.	7.2	8.0	0.8	Metro
Universal Red Line Bus Sta.	6.5	N/S	-	Metro
Harbor-Century Fwy, Silver Line Sta.	8.2	8.1	-0.1	Metro
	7.56	7.71	0.15	AVG.



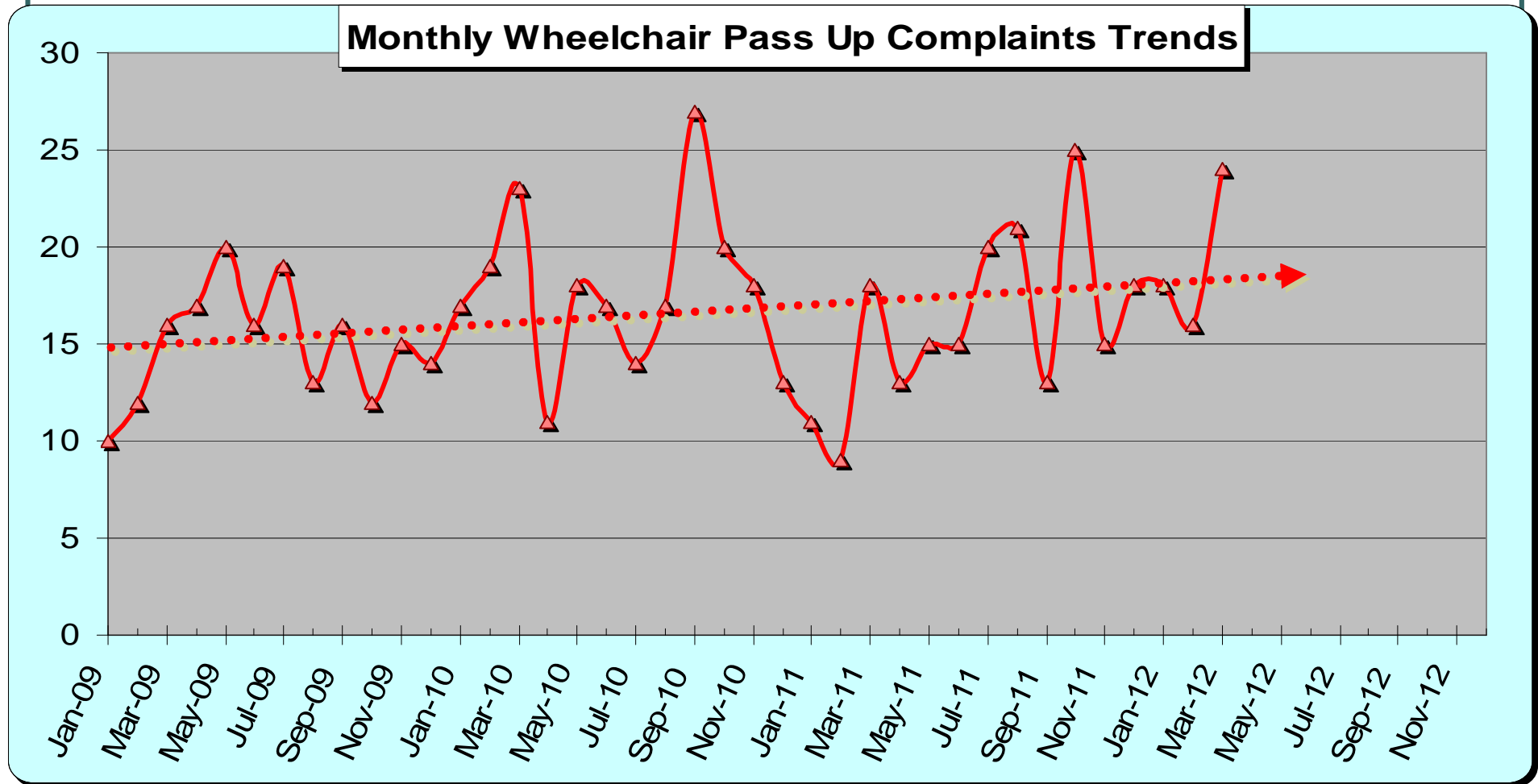
WSC Service Council May 2012 Meeting

Monthly ADA Related Complain Trends



WSC Service Council May 2012 Meeting

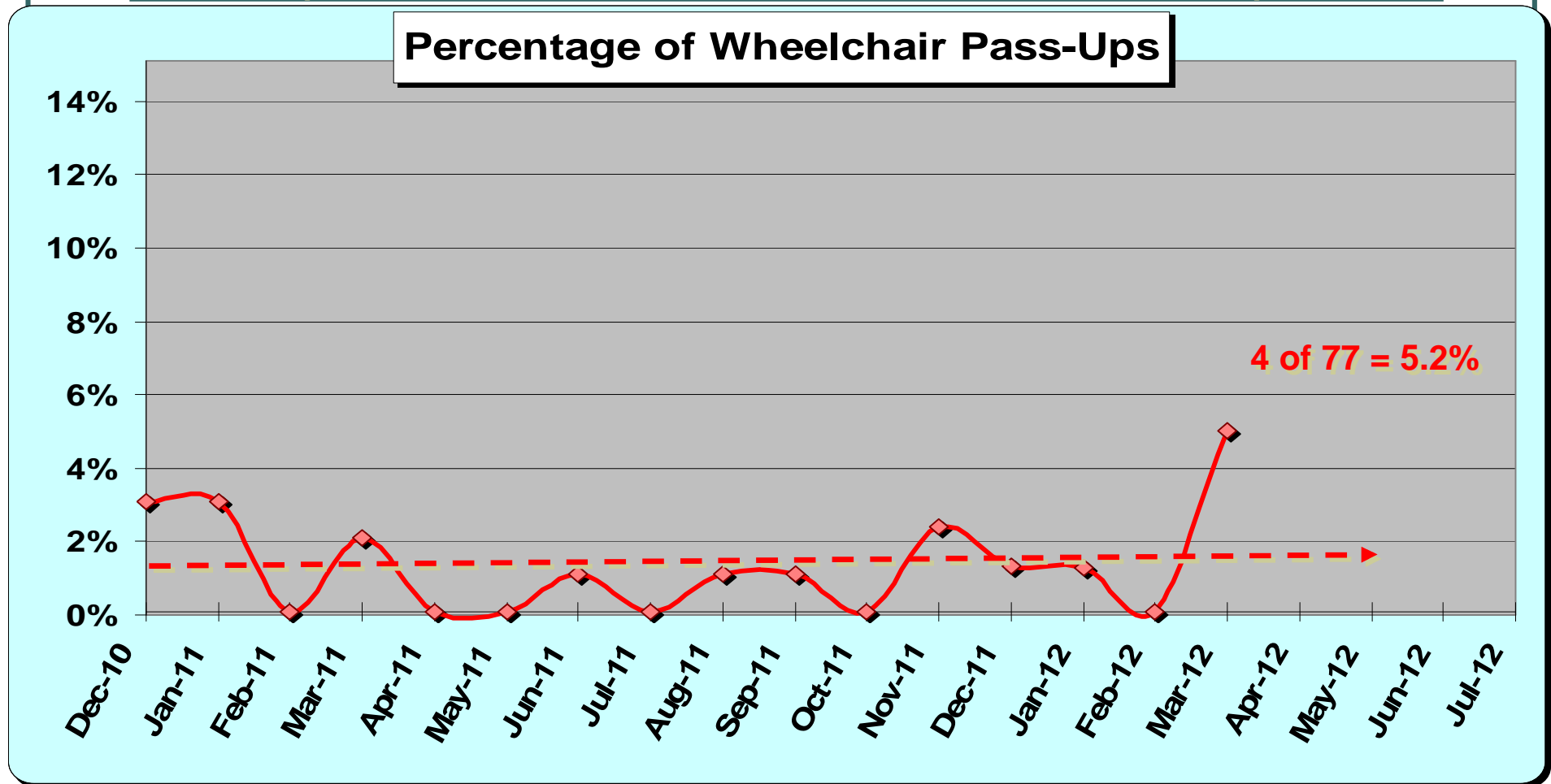
Monthly Wheelchair Pass-Up Complaints



WSC Service Council May 2012 Meeting

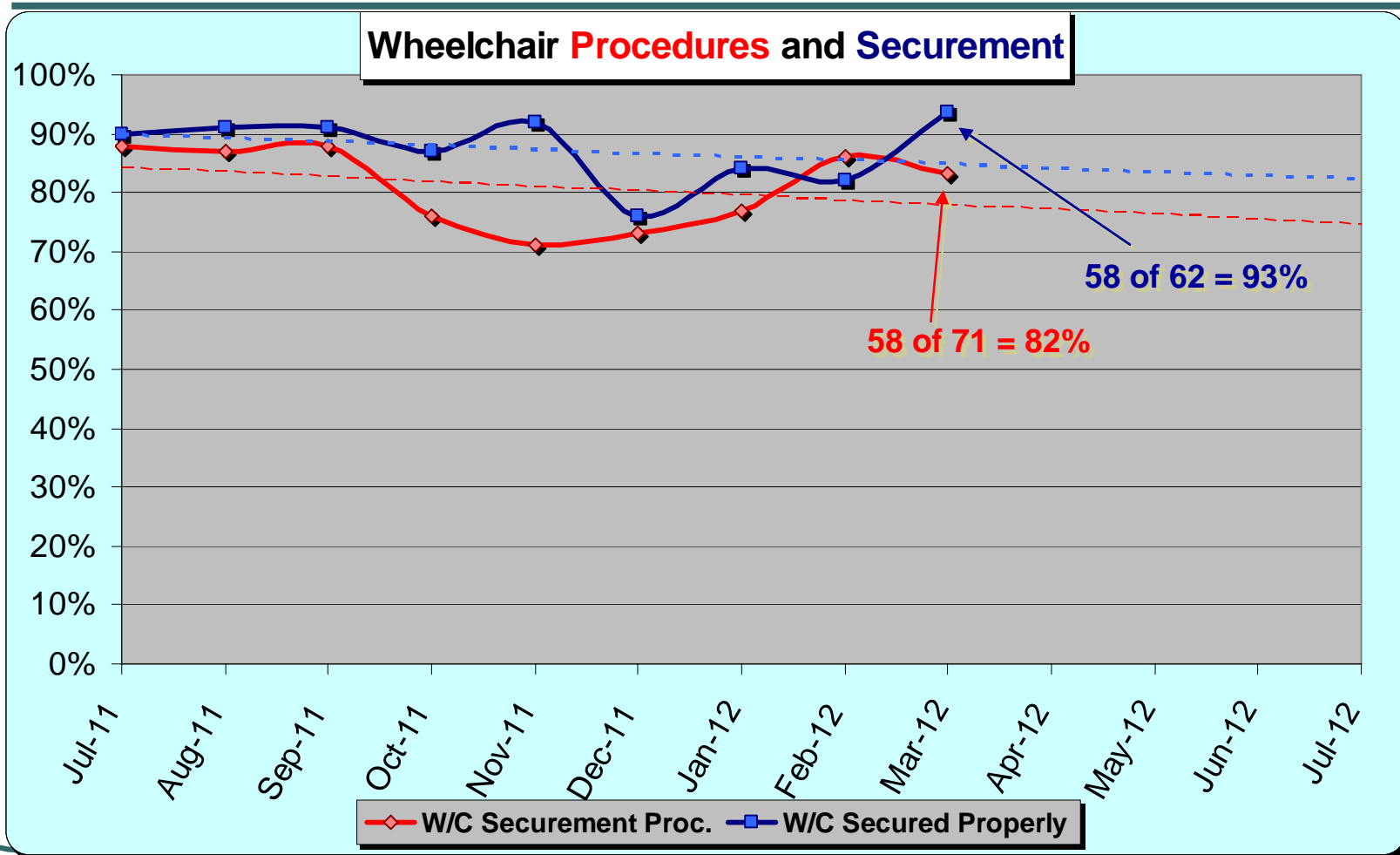
Mystery Riders Observations

(215 Undercover Rides in March 2012 Report)



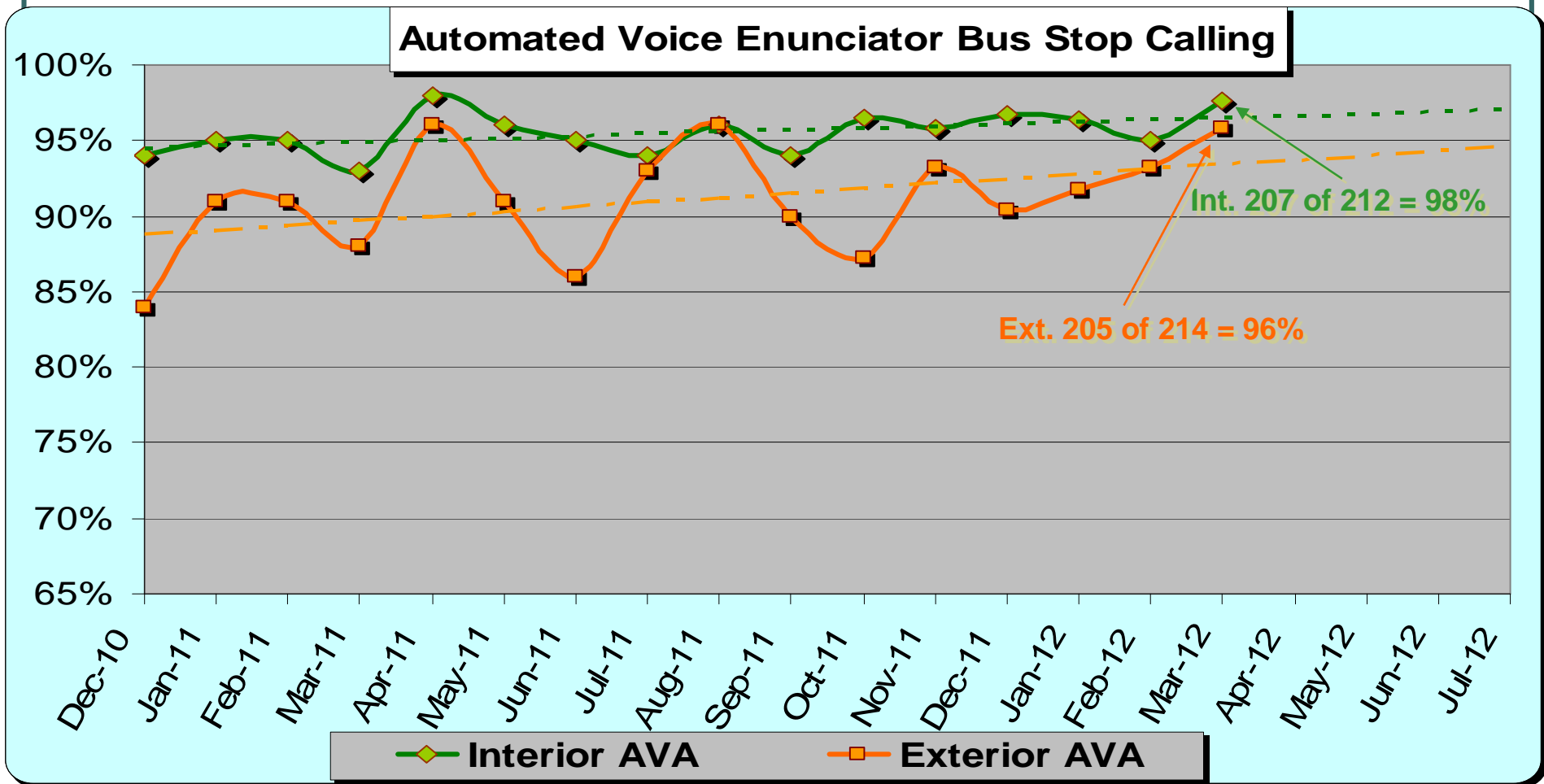
WSC Service Council May 2012 Meeting

Mystery Riders Observations



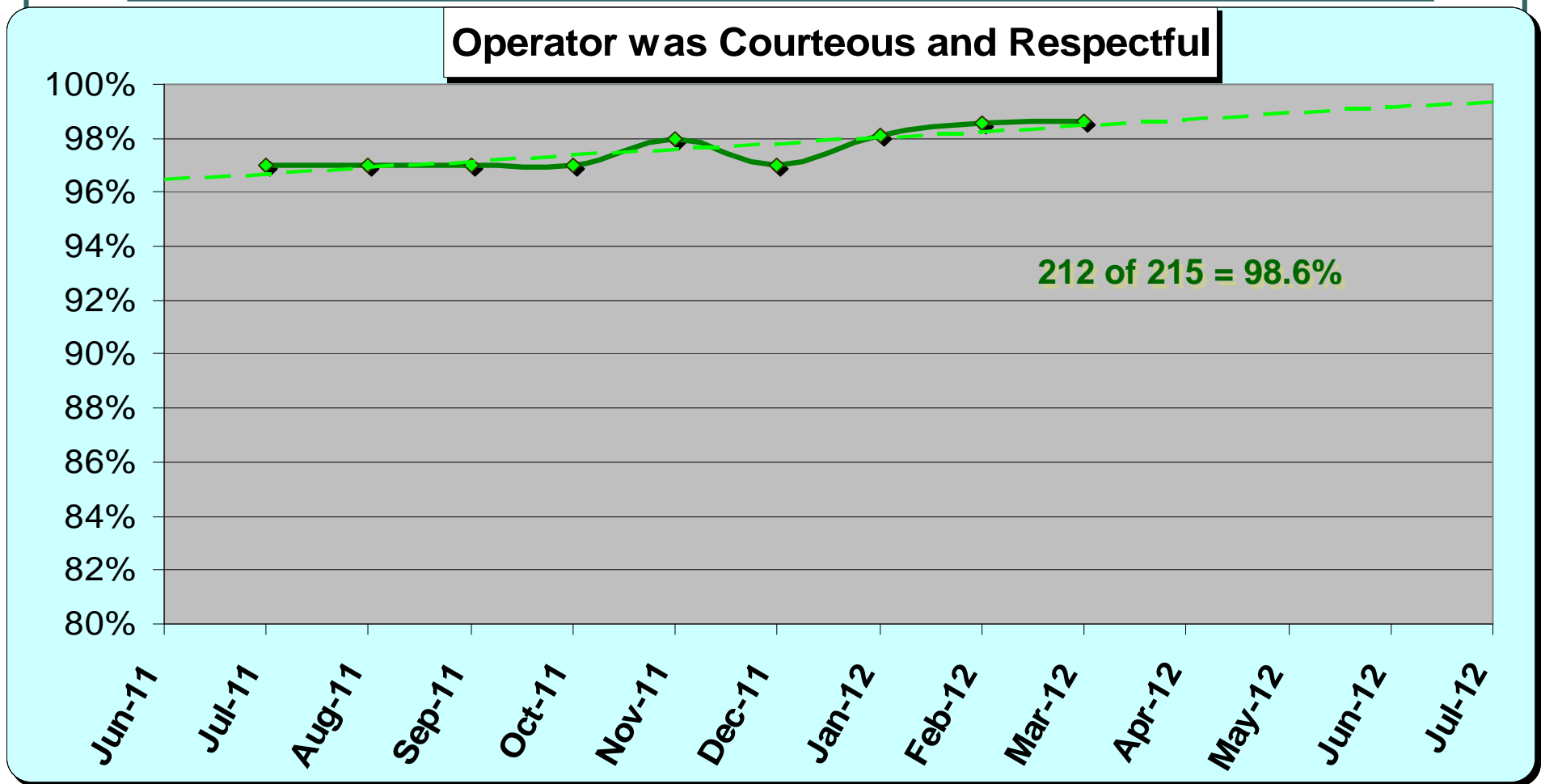
WSC Service Council May 2012 Meeting

Mystery Riders Observations



WSC Service Council May 2012 Meeting

Mystery Riders Observations



Expo Light Rail Line Update

Civil Rights (Title VI Status)

Meet and Confer with CEO

May 21 @ 2:30PM

Heritage Conf. Room on 13th Floor - USG

- **FY 13 & 14 Metro Budget Outlook**
- **Metro Bus & Rail Performance Targets for FY 13**
- **Introduction of Frank Alejandro**
- **Measure R**