

CORPORATE SAFETY REPORT

METRO BOARD MEETING

Vijay Khawani

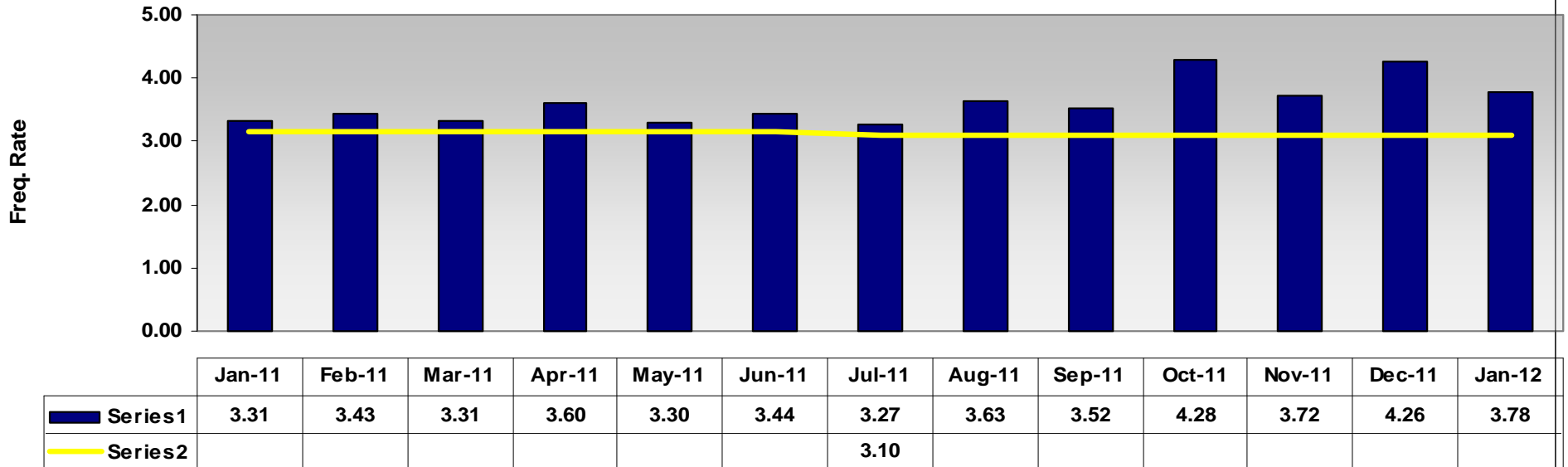
Executive Officer, Corporate Safety

March 22 , 2012

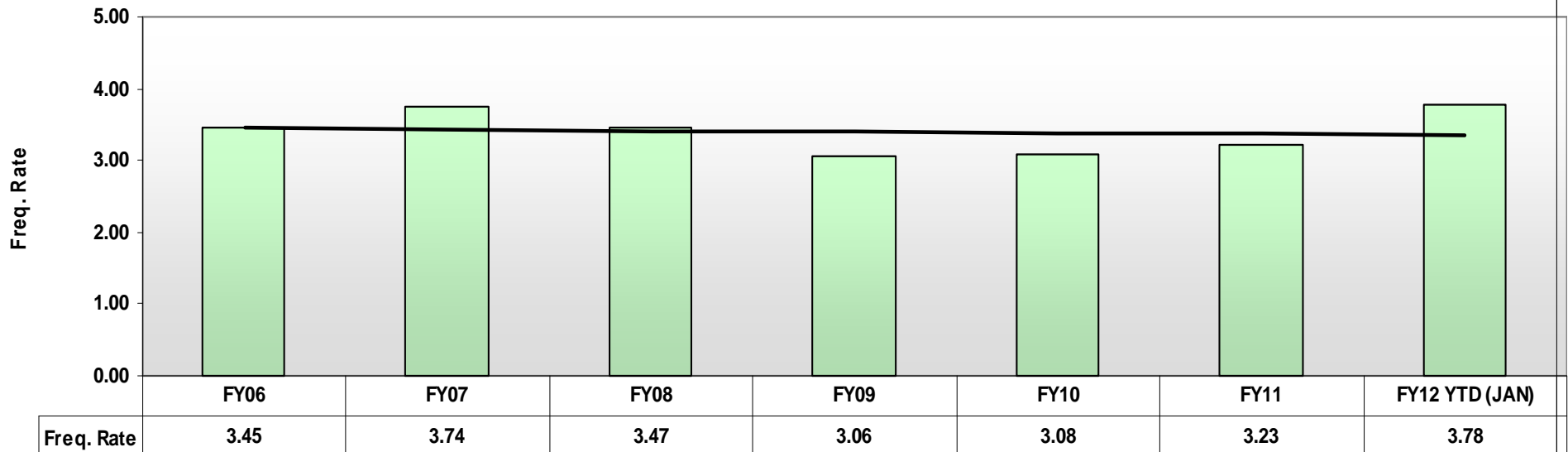


Metro

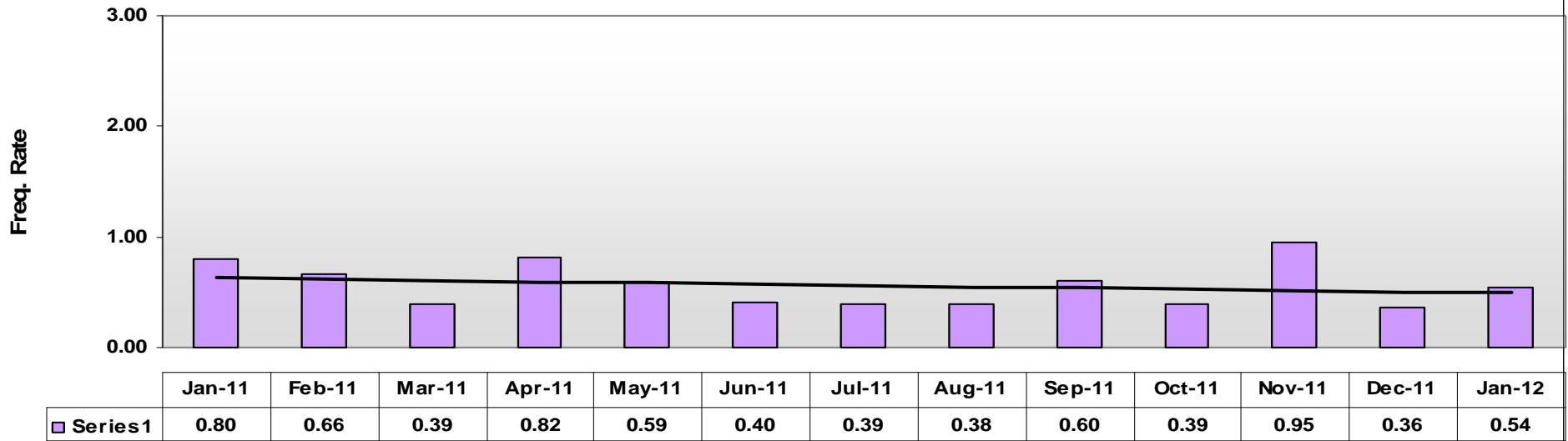
Safety - Bus Accidents Per 100,000 Hub Miles



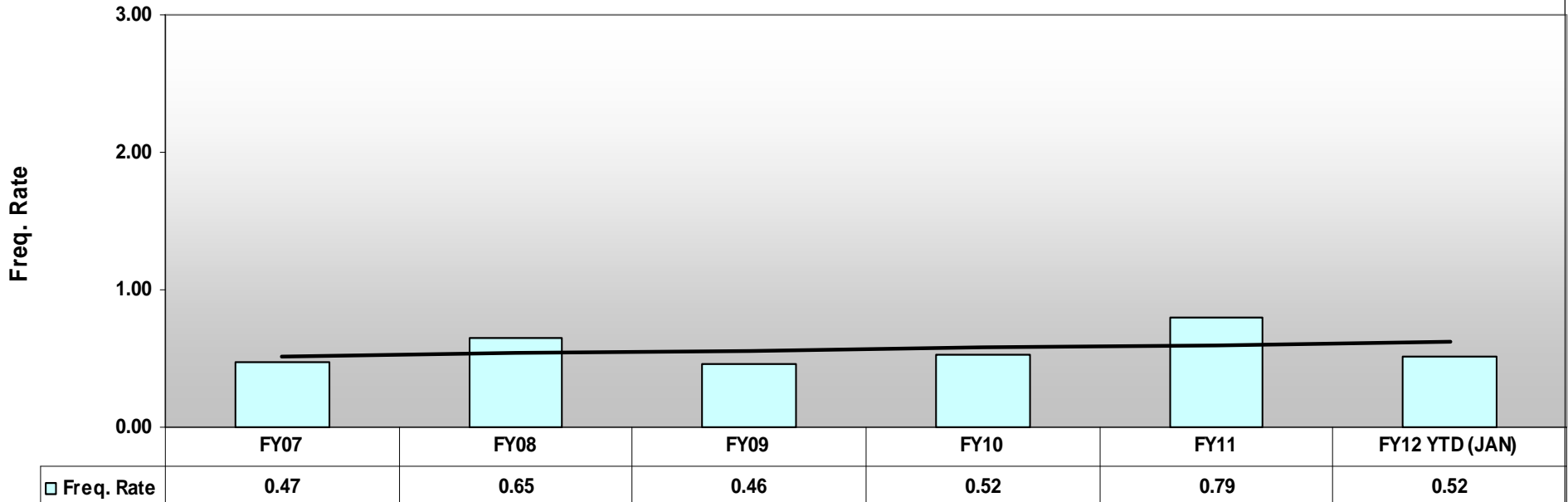
Safety - Bus Accidents Per 100,000 Hub Miles



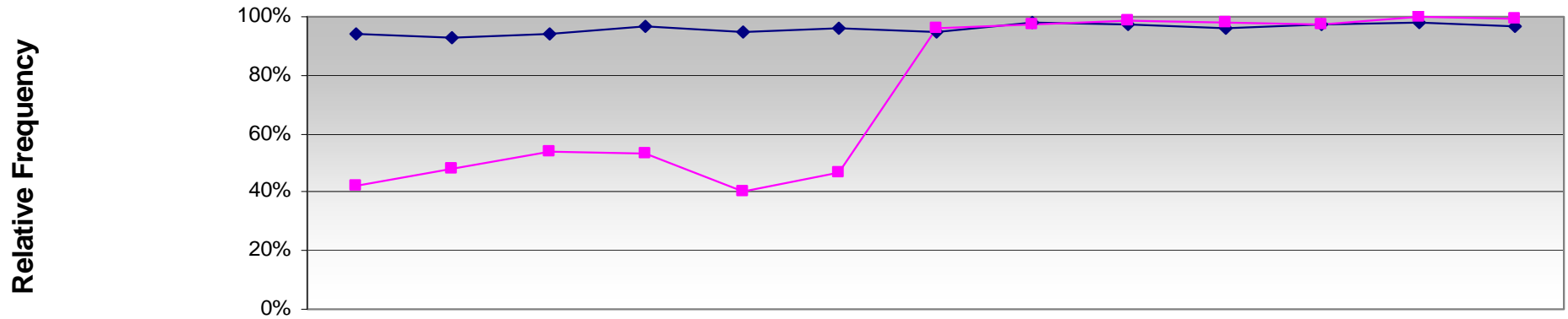
Safety - Rail Accidents Per 100,000 Train Miles



Safety - Rail Accidents Per 100,000 Train Miles

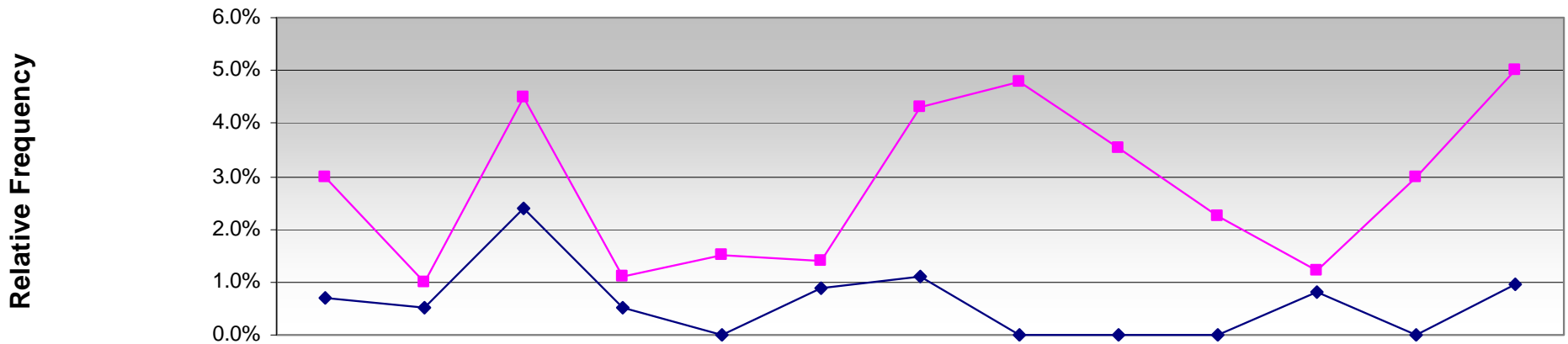


Did Operator Wear Seat Belt & Were all Passengers Behind Safety Line before Bus Was Moved?



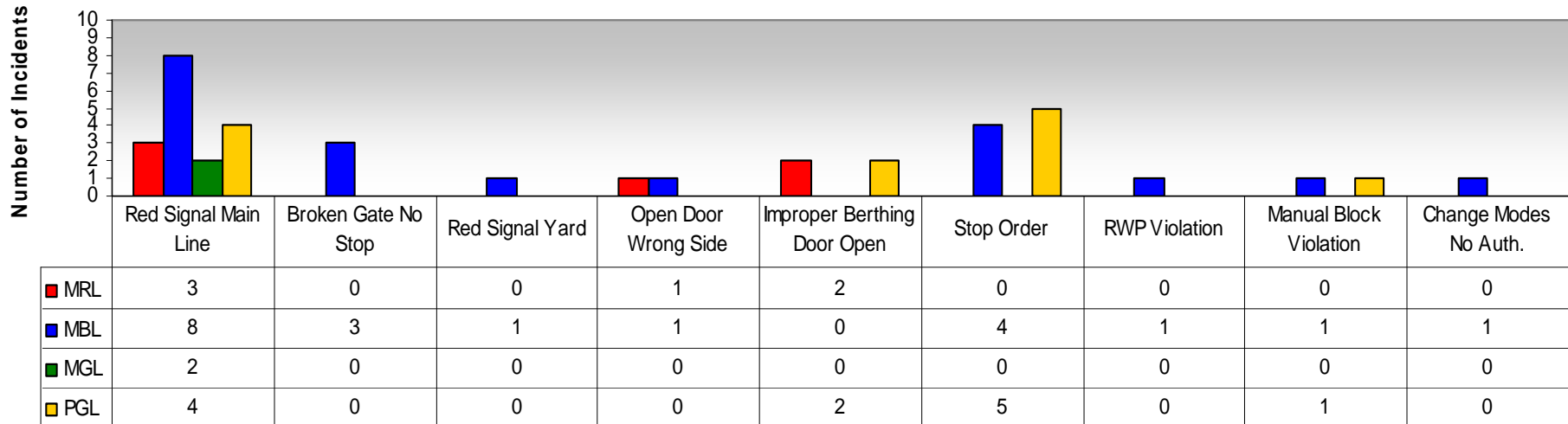
	Jan-11	Feb-11	Mar-11	Apr-11	May-11	Jun-11	Jul-11	Aug-11	Sep-11	Oct-11	Nov-11	Dec-11	Jan-12
◆ Wearing seat belts	94%	93%	94%	97%	95%	96%	95%	98%	97%	96%	97%	98%	97%
■ Behind Safety Line	42%	48%	54%	53%	40%	47%	96%	97%	99%	98%	98%	100%	100%

Cell Phone/Electronic Device Used & Did Operator Run a Red Light?

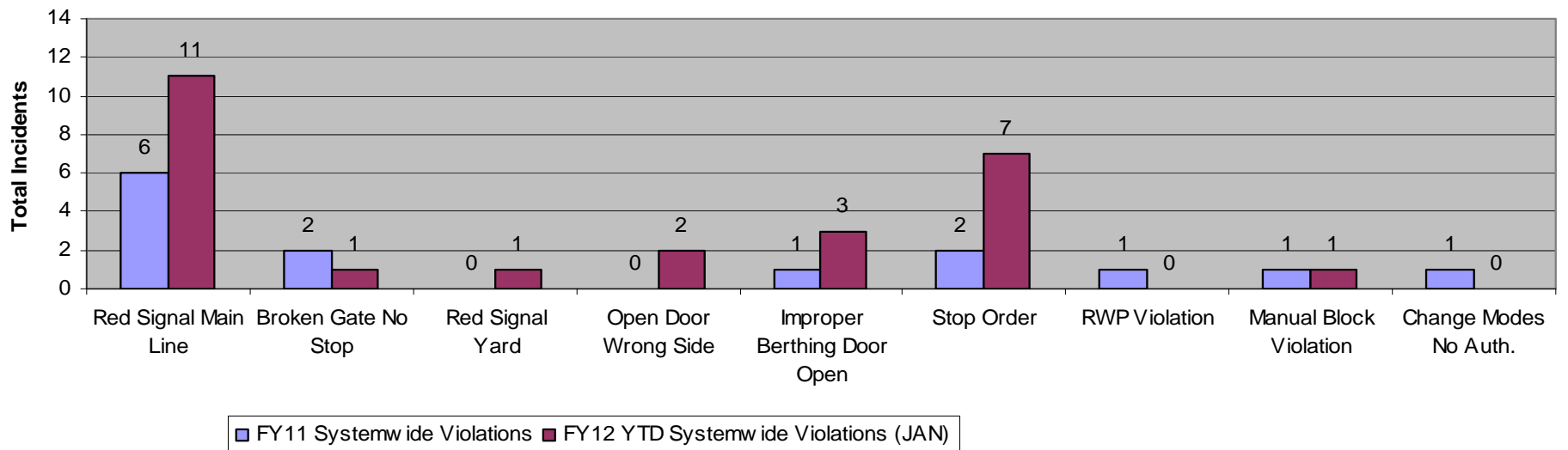


	Jan-11	Feb-11	Mar-11	Apr-11	May-11	Jun-11	Jul-11	Aug-11	Sep-11	Oct-11	Nov-11	Dec-11	Jan-12
◆ Using Cell Phone	0.7%	0.5%	2.4%	0.5%	0.0%	0.9%	1.1%	0.0%	0.0%	0.0%	0.8%	0.0%	0.9%
■ Ran Red Light	3.0%	1.0%	4.5%	1.1%	1.5%	1.4%	4.3%	4.8%	3.5%	2.2%	1.2%	3.0%	5.0%

Rail Systemwide Safety Incidents (July 2010 - January 2012)

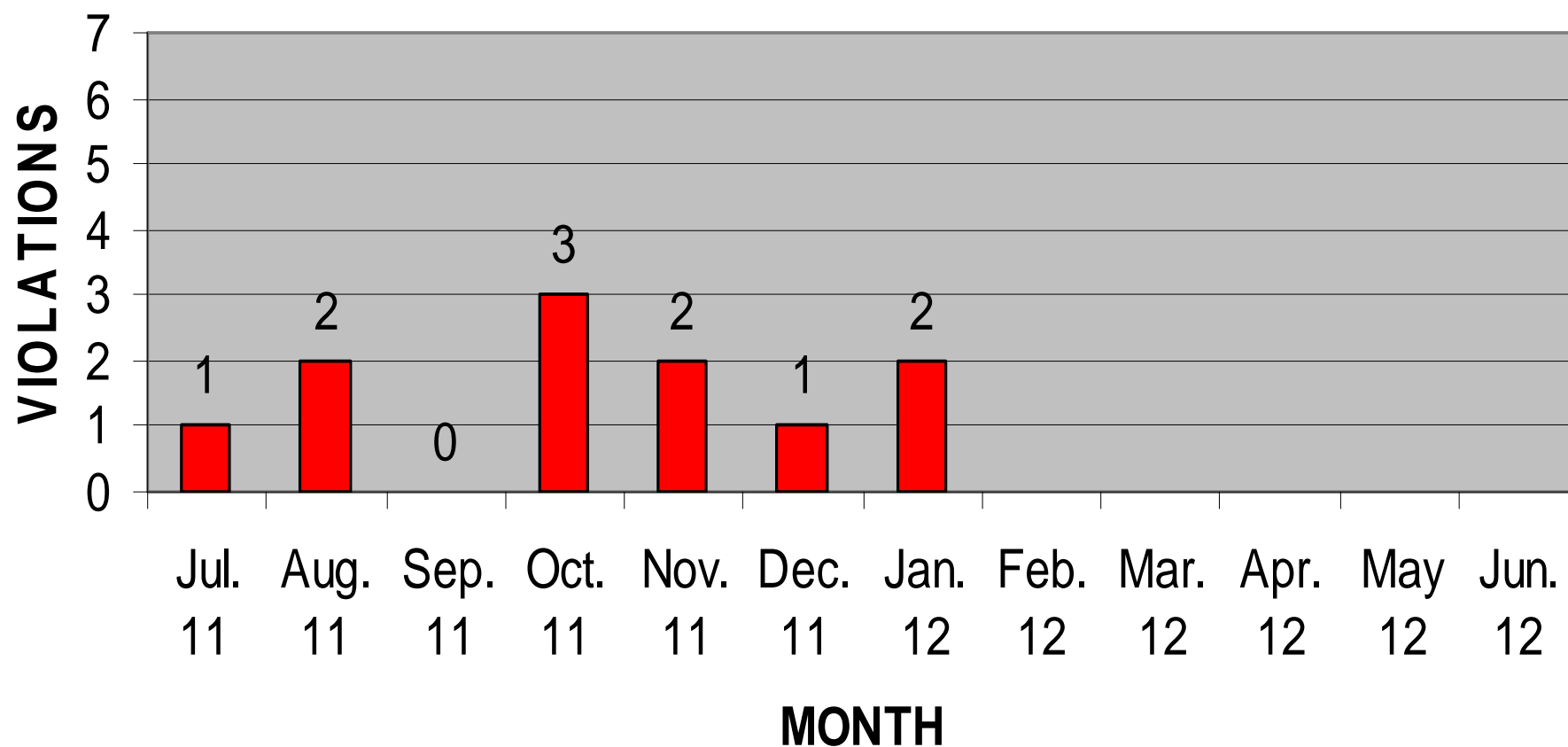


Rail Systemwide Safety Incidents comparing FY11 vs FY12 YTD (JAN)

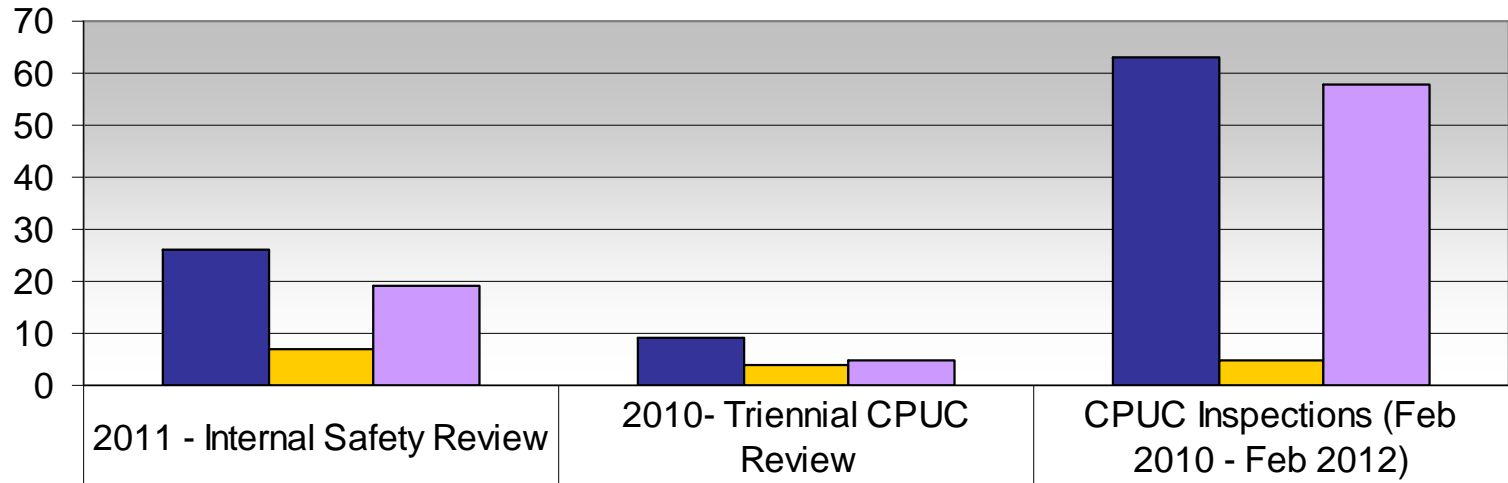


FY 12 YTD RED SIGNAL VIOLATIONS- MAINLINE

FY12 RED SIGNAL VIOLATIONS - MAIN LINE

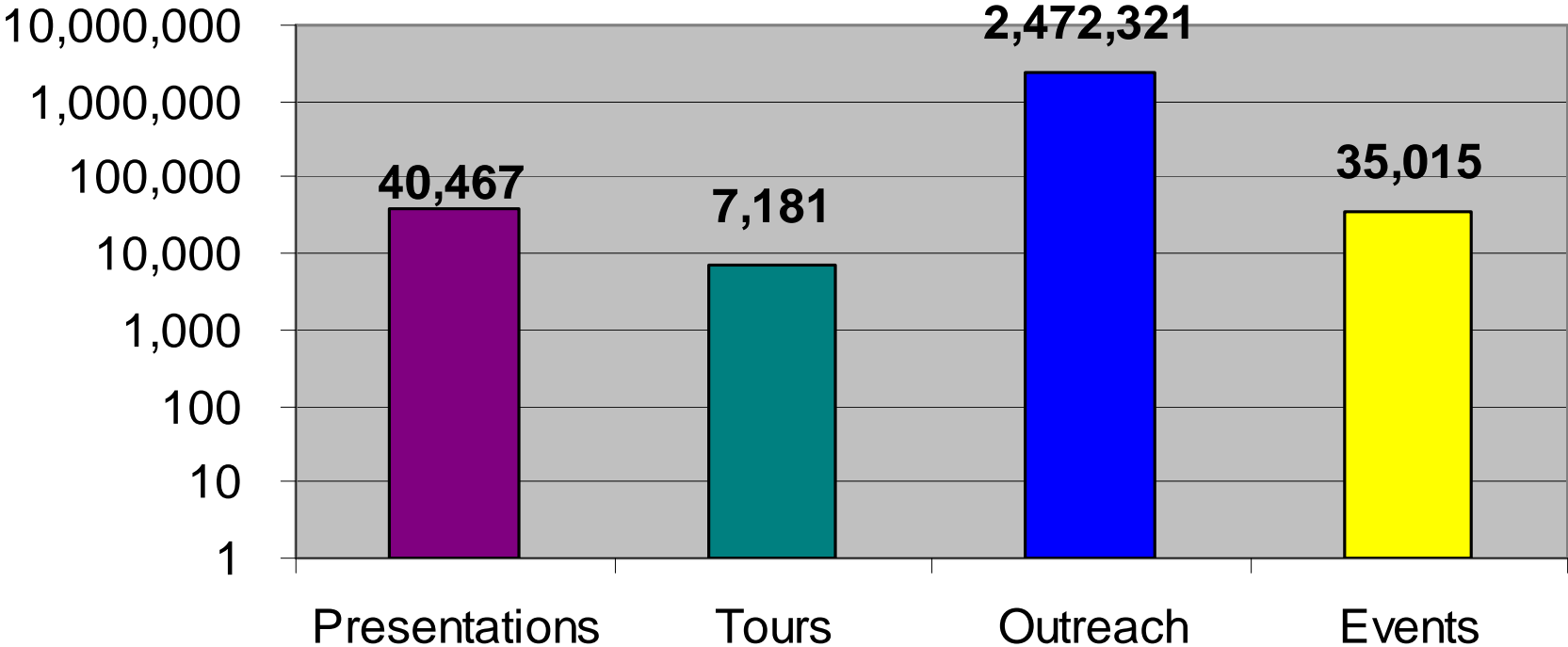


Status of Corrective Action Plans



■ Total Findings	26	9	63
■ Open	7	4	5
■ Closed	19	5	58

**Rail Safety Education and Outreach
Number of People Reached FY 12
July 2011 to January 2012**



Harbor Freeway Station Safety Improvements

- On February 22, an errant motorist entered the “Buses Only” lane on the 110 freeway near the 105/110 station and collided with patrons who were waiting at the bus station
- As part of the investigation process, Metro, Caltrans, and CHP staff conducted joint site inspections to consider safety enhancements to mitigate similar recurrences
- The bus station properties are owned by Caltrans and operated by Metro.

Harbor Freeway Station Safety Improvements

- The agencies agreed on implementing the following measures:
 - Additional sand barrel crash attenuators
 - Enhanced signage on the freeway in advance of Diamond lane/Bus lane separation
 - Enhanced pavement markings in lanes
 - Concrete – filled metal bollards along the platform edge
 - Enhancing the STOP signs with beacons
 - Replacing delineators or lane separators on the freeway on approach to the station

Proposed Bollards in Station Area



Proposed Additional Crash Attenuators



Next Steps

- **Metro staff is working closely with Caltrans to implement the safety enhancements at the 105/110 station**
- **Similar enhancements will be made at the 37th Street, Slauson, Rosecrans, and Manchester freeway stations, and at other locations (eg: El Monte busway)**