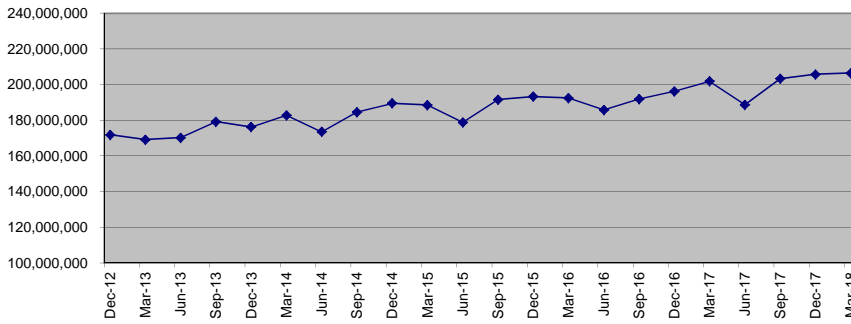
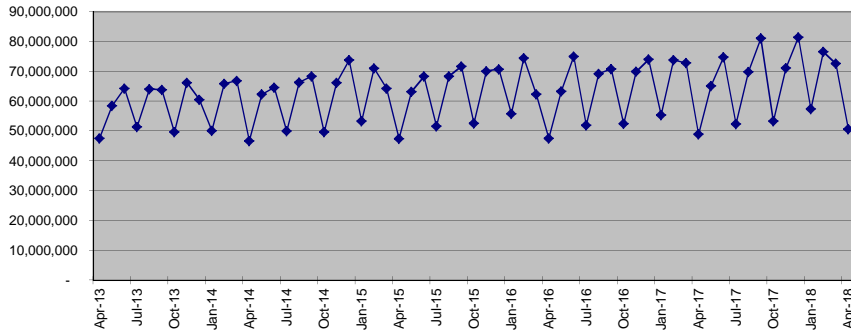


**Proposition A**  
**Quarterly Sales Tax Cash Receipts**



**Proposition A**  
**Monthly Sales Tax Cash Receipts**



|          | Monthly Receipts | Quarterly Receipts | % Change Same Period Prior Year |         |
|----------|------------------|--------------------|---------------------------------|---------|
| Jan-2012 | 47,244,200       | Sep-2009           | 137,972,623                     | -20.22% |
| Feb-2012 | 59,978,000       | Dec-2009           | 138,493,579                     | -18.54% |
| Mar-2012 | 55,757,483       | Mar-2010           | 141,745,979                     | -5.63%  |
| Apr-2012 | 43,229,100       | Jun-2010           | 137,026,066                     | 1.90%   |
| May-2012 | 54,293,800       | Sep-2010           | 143,946,727                     | 4.33%   |
| Jun-2012 | 62,635,846       | Dec-2010           | 149,679,595                     | 8.08%   |
| Jul-2012 | 47,364,700       | Mar-2011           | 150,612,671                     | 6.26%   |
| Aug-2012 | 59,163,600       | Jun-2011           | 147,818,378                     | 7.88%   |
| Sep-2012 | 61,670,555       | Sep-2011           | 155,334,683                     | 7.91%   |
| Oct-2012 | 49,144,700       | Dec-2011           | 164,168,373                     | 9.68%   |
| Nov-2012 | 61,734,800       | Mar-2012           | 162,979,683                     | 8.21%   |
| Dec-2012 | 61,037,791       | Jun-2012           | 160,158,746                     | 8.35%   |
| Jan-2013 | 47,500,600       | Sep-2012           | 168,198,855                     | 8.28%   |
| Feb-2013 | 63,150,600       | Dec-2012           | 171,917,291                     | 4.72%   |
| Mar-2013 | 58,513,076       | Mar-2013           | 169,164,276                     | 3.79%   |
| Apr-2013 | 47,517,300       | Jun-2013           | 170,227,205                     | 6.29%   |
| May-2013 | 58,431,600       | Sep-2013           | 179,196,966                     | 6.54%   |
| Jun-2013 | 64,278,305       | Dec-2013           | 176,293,223                     | 2.55%   |
| Jul-2013 | 51,346,700       | Mar-2014           | 182,774,563                     | 8.05%   |
| Aug-2013 | 64,075,200       | Jun-2014           | 173,574,333                     | 1.97%   |
| Sep-2013 | 63,775,066       | Sep-2014           | 184,585,161                     | 3.01%   |
| Oct-2013 | 49,635,000       | Dec-2014           | 189,544,392                     | 7.52%   |
| Nov-2013 | 66,180,000       | Mar-2015           | 188,558,173                     | 3.16%   |
| Dec-2013 | 60,478,223       | Jun-2015           | 178,912,650                     | 3.08%   |
| Jan-2014 | 50,074,100       | Sep-2015           | 191,597,609                     | 3.80%   |
| Feb-2014 | 65,840,300       | Dec-2015           | 193,325,465                     | 1.99%   |
| Mar-2014 | 66,860,163       | Mar-2016           | 192,534,361                     | 2.11%   |
| Apr-2014 | 46,709,600       | Jun-2016           | 185,841,805                     | 3.87%   |
| May-2014 | 62,279,500       | Sep-2016           | 191,928,471                     | 0.17%   |
| Jun-2014 | 64,585,233       | Dec-2016           | 196,279,771                     | 1.53%   |
| Jul-2014 | 49,950,800       | Mar-2017           | 201,891,203                     | 4.86%   |
| Aug-2014 | 66,324,800       | Jun-2017           | 188,745,386                     | 1.56%   |
| Sep-2014 | 68,309,561       | Sep-2017           | 203,348,482                     | 5.95%   |
| Oct-2014 | 49,627,600       | Dec-2017           | 205,806,117                     | 4.85%   |
| Nov-2014 | 66,170,100       | Mar-2018           | 206,474,450                     | 2.27%   |
| Dec-2014 | 73,746,692       |                    |                                 |         |
| Jan-2015 | 53,257,300       |                    |                                 |         |
| Feb-2015 | 71,009,700       |                    |                                 |         |
| Mar-2015 | 64,291,173       |                    |                                 |         |
| Apr-2015 | 47,415,700       |                    |                                 |         |
| May-2015 | 63,220,900       |                    |                                 |         |
| Jun-2015 | 68,276,050       |                    |                                 |         |
| Jul-2015 | 51,646,900       |                    |                                 |         |
| Aug-2015 | 68,314,200       |                    |                                 |         |
| Sep-2015 | 71,636,509       |                    |                                 |         |
| Oct-2015 | 52,541,000       |                    |                                 |         |
| Nov-2015 | 70,054,600       |                    |                                 |         |
| Dec-2015 | 70,729,865       |                    |                                 |         |
| Jan-2016 | 55,829,400       |                    |                                 |         |
| Feb-2016 | 74,439,200       |                    |                                 |         |
| Mar-2016 | 62,265,761       |                    |                                 |         |
| Apr-2016 | 47,500,600       |                    |                                 |         |
| May-2016 | 63,334,100       |                    |                                 |         |
| Jun-2016 | 75,007,105       |                    |                                 |         |
| Jul-2016 | 51,917,900       |                    |                                 |         |
| Aug-2016 | 69,223,800       |                    |                                 |         |
| Sep-2016 | 70,786,771       |                    |                                 |         |
| Oct-2016 | 52,422,600       |                    |                                 |         |
| Nov-2016 | 69,896,800       |                    |                                 |         |
| Dec-2016 | 73,960,371       |                    |                                 |         |
| Jan-2017 | 55,334,600       |                    |                                 |         |
| Feb-2017 | 73,779,400       |                    |                                 |         |
| Mar-2017 | 72,777,203       |                    |                                 |         |
| Apr-2017 | 48,864,300       |                    |                                 |         |
| May-2017 | 65,152,400       |                    |                                 |         |
| Jun-2017 | 74,728,686       |                    |                                 |         |
| Jul-2017 | 52,391,700       |                    |                                 |         |
| Aug-2017 | 69,855,600       |                    |                                 |         |
| Sep-2017 | 81,101,182       |                    |                                 |         |
| Oct-2017 | 53,302,800       |                    |                                 |         |
| Nov-2017 | 71,070,200       |                    |                                 |         |
| Dec-2017 | 81,433,317       |                    |                                 |         |
| Jan-2018 | 57,354,200       |                    |                                 |         |
| Feb-2018 | 76,532,000       |                    |                                 |         |
| Mar-2018 | 72,558,250       |                    |                                 |         |
| Apr-2018 | 50,623,400       |                    |                                 |         |