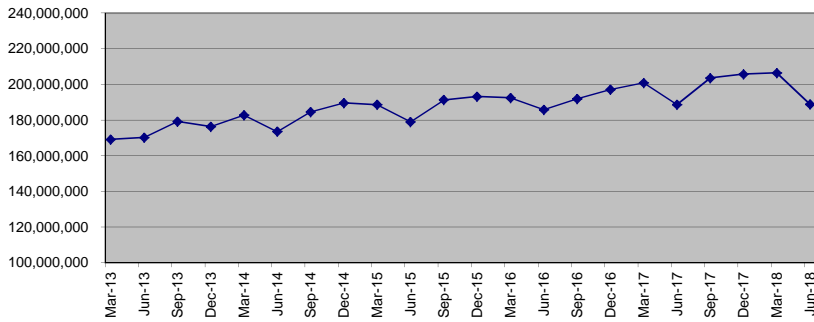
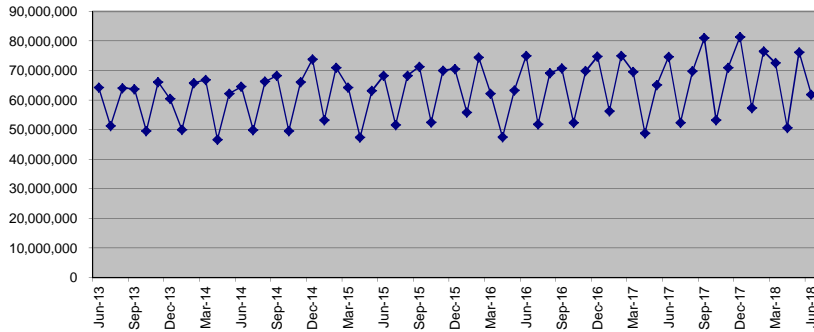


**Proposition C
Quarterly Sales Tax Cash Receipts**



**Proposition C
Monthly Sales Tax Cash Receipts**



	Monthly Receipts	Quarterly Receipts	% Change Same Period Prior Year	
Jan-2012	47,244,100	Sep-2009	137,988,532	-20.21%
Feb-2012	59,977,800	Dec-2009	138,510,976	-18.56%
Mar-2012	55,765,744	Mar-2010	141,760,917	-5.64%
Apr-2012	43,228,400	Jun-2010	137,024,422	1.88%
May-2012	54,292,800	Sep-2010	143,956,139	4.32%
Jun-2012	62,659,360	Dec-2010	149,712,807	8.09%
Jul-2012	47,363,100	Mar-2011	150,633,862	6.26%
Aug-2012	59,161,400	Jun-2011	147,804,137	7.87%
Sep-2012	61,696,081	Sep-2011	155,342,602	7.91%
Oct-2012	49,156,600	Dec-2011	164,212,177	9.68%
Nov-2012	61,750,700	Mar-2012	162,987,644	8.20%
Dec-2012	60,994,982	Jun-2012	160,180,560	8.37%
Jan-2013	47,500,700	Sep-2012	168,220,581	8.29%
Feb-2013	63,150,800	Dec-2012	171,902,282	4.68%
Mar-2013	58,561,544	Mar-2013	169,213,044	3.82%
Apr-2013	47,516,400	Jun-2013	170,290,497	6.31%
May-2013	58,430,300	Sep-2013	179,247,820	6.56%
Jun-2013	64,343,794	Dec-2013	176,312,573	2.57%
Jul-2013	51,346,400	Mar-2014	182,802,807	8.03%
Aug-2013	64,074,800	Jun-2014	173,578,738	1.93%
Sep-2013	63,826,620	Sep-2014	184,624,446	3.00%
Oct-2013	49,635,000	Dec-2014	189,618,737	7.55%
Nov-2013	66,180,000	Mar-2015	188,610,165	3.18%
Dec-2013	60,497,573	Jun-2015	179,005,639	3.13%
Jan-2014	50,074,100	Sep-2015	191,355,765	3.65%
Feb-2014	65,840,300	Dec-2015	193,240,427	1.91%
Mar-2014	66,888,407	Mar-2016	192,538,448	2.08%
Apr-2014	46,709,600	Jun-2016	185,913,122	3.86%
May-2014	62,279,500	Sep-2016	191,944,858	0.31%
Jun-2014	64,589,638	Dec-2016	197,132,446	2.01%
Jul-2014	49,950,800	Mar-2017	200,947,889	4.37%
Aug-2014	66,324,700	Jun-2017	188,741,861	1.52%
Sep-2014	68,348,946	Sep-2017	203,585,942	6.06%
Oct-2014	49,627,300	Dec-2017	205,776,453	4.38%
Nov-2014	66,169,800	Mar-2018	206,539,477	2.78%
Dec-2014	73,821,637	Jun-2018	188,839,142	0.05%
Jan-2015	53,257,200			
Feb-2015	71,009,600			
Mar-2015	64,343,365			
Apr-2015	47,415,300			
May-2015	63,220,400			
Jun-2015	68,369,939			
Jul-2015	51,646,700			
Aug-2015	68,313,900			
Sep-2015	71,395,165			
Oct-2015	52,540,700			
Nov-2015	70,054,300			
Dec-2015	70,645,427			
Jan-2016	55,829,300			
Feb-2016	74,439,100			
Mar-2016	62,270,048			
Apr-2016	47,500,600			
May-2016	63,334,100			
Jun-2016	75,078,422			
Jul-2016	51,917,900			
Aug-2016	69,223,800			
Sep-2016	70,803,158			
Oct-2016	52,422,600			
Nov-2016	69,896,800			
Dec-2016	74,813,046			
Jan-2017	56,284,800			
Feb-2017	75,046,400			
Mar-2017	69,616,699			
Apr-2017	48,864,600			
May-2017	65,152,800			
Jun-2017	74,724,461			
Jul-2017	52,391,200			
Aug-2017	69,854,900			
Sep-2017	81,123,442			
Oct-2017	53,302,200			
Nov-2017	71,069,600			
Dec-2017	81,404,653			
Jan-2018	57,354,400			
Feb-2018	76,562,400			
Mar-2018	72,622,677			
Apr-2018	50,624,300			
May-2018	76,250,406			
Jun-2018	61,964,436			