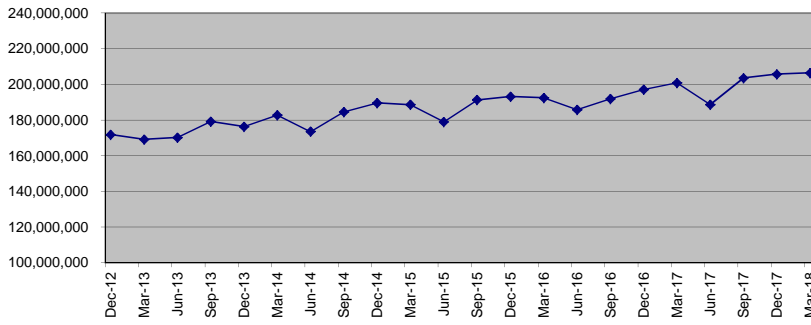
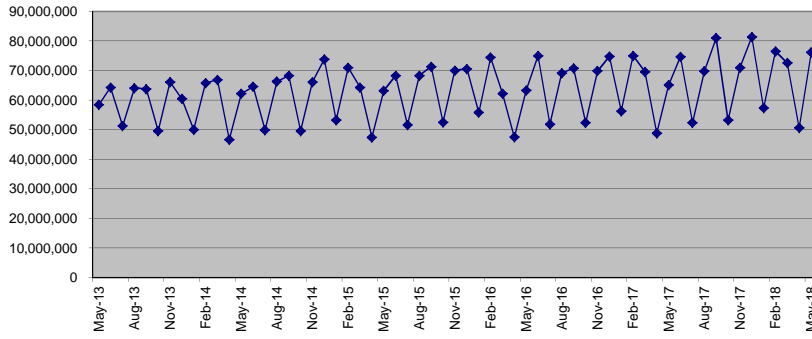


**Proposition C
Quarterly Sales Tax Cash Receipts**



**Proposition C
Monthly Sales Tax Cash Receipts**



| | Monthly Receipts | | Quarterly Receipts | % Change Same Period Prior Year |
|----------|------------------|----------|--------------------|---------------------------------|
| Jan-2012 | 47,244,100 | Sep-2009 | 137,988,532 | -20.21% |
| Feb-2012 | 59,977,800 | Dec-2009 | 138,510,976 | -18.56% |
| Mar-2012 | 55,765,744 | Mar-2010 | 141,760,917 | -5.64% |
| Apr-2012 | 43,228,400 | Jun-2010 | 137,024,422 | 1.88% |
| May-2012 | 54,292,800 | Sep-2010 | 143,956,139 | 4.32% |
| Jun-2012 | 62,659,360 | Dec-2010 | 149,712,807 | 8.09% |
| Jul-2012 | 47,363,100 | Mar-2011 | 150,633,862 | 6.26% |
| Aug-2012 | 59,161,400 | Jun-2011 | 147,804,137 | 7.87% |
| Sep-2012 | 61,696,081 | Sep-2011 | 155,342,602 | 7.91% |
| Oct-2012 | 49,156,600 | Dec-2011 | 164,212,177 | 9.68% |
| Nov-2012 | 61,750,700 | Mar-2012 | 162,987,644 | 8.20% |
| Dec-2012 | 60,994,982 | Jun-2012 | 160,180,560 | 8.37% |
| Jan-2013 | 47,500,700 | Sep-2012 | 168,220,581 | 8.29% |
| Feb-2013 | 63,150,800 | Dec-2012 | 171,902,282 | 4.68% |
| Mar-2013 | 58,561,544 | Mar-2013 | 169,213,044 | 3.82% |
| Apr-2013 | 47,516,400 | Jun-2013 | 170,290,497 | 6.31% |
| May-2013 | 58,430,300 | Sep-2013 | 179,247,820 | 6.56% |
| Jun-2013 | 64,343,794 | Dec-2013 | 176,312,573 | 2.57% |
| Jul-2013 | 51,346,400 | Mar-2014 | 182,802,807 | 8.03% |
| Aug-2013 | 64,074,800 | Jun-2014 | 173,578,738 | 1.93% |
| Sep-2013 | 63,826,620 | Sep-2014 | 184,624,446 | 3.00% |
| Oct-2013 | 49,635,000 | Dec-2014 | 189,618,737 | 7.55% |
| Nov-2013 | 66,180,000 | Mar-2015 | 188,610,165 | 3.18% |
| Dec-2013 | 60,497,573 | Jun-2015 | 179,005,639 | 3.13% |
| Jan-2014 | 50,074,100 | Sep-2015 | 191,355,765 | 3.65% |
| Feb-2014 | 65,840,300 | Dec-2015 | 193,240,427 | 1.91% |
| Mar-2014 | 66,888,407 | Mar-2016 | 192,538,448 | 2.08% |
| Apr-2014 | 46,709,600 | Jun-2016 | 185,913,122 | 3.86% |
| May-2014 | 62,279,500 | Sep-2016 | 191,944,858 | 0.31% |
| Jun-2014 | 64,589,638 | Dec-2016 | 197,132,446 | 2.01% |
| Jul-2014 | 49,950,800 | Mar-2017 | 200,947,889 | 4.37% |
| Aug-2014 | 66,324,700 | Jun-2017 | 188,741,861 | 1.52% |
| Sep-2014 | 68,348,946 | Sep-2017 | 203,585,942 | 6.06% |
| Oct-2014 | 49,627,300 | Dec-2017 | 205,776,453 | 4.38% |
| Nov-2014 | 66,169,800 | Mar-2018 | 206,539,477 | 2.78% |
| Dec-2014 | 73,821,637 | | | |
| Jan-2015 | 53,257,200 | | | |
| Feb-2015 | 71,009,600 | | | |
| Mar-2015 | 64,343,365 | | | |
| Apr-2015 | 47,415,300 | | | |
| May-2015 | 63,220,400 | | | |
| Jun-2015 | 68,369,939 | | | |
| Jul-2015 | 51,646,700 | | | |
| Aug-2015 | 68,313,900 | | | |
| Sep-2015 | 71,395,165 | | | |
| Oct-2015 | 52,540,700 | | | |
| Nov-2015 | 70,054,300 | | | |
| Dec-2015 | 70,645,427 | | | |
| Jan-2016 | 55,829,300 | | | |
| Feb-2016 | 74,439,100 | | | |
| Mar-2016 | 62,270,048 | | | |
| Apr-2016 | 47,500,600 | | | |
| May-2016 | 63,334,100 | | | |
| Jun-2016 | 75,078,422 | | | |
| Jul-2016 | 51,917,900 | | | |
| Aug-2016 | 69,223,800 | | | |
| Sep-2016 | 70,803,158 | | | |
| Oct-2016 | 52,422,600 | | | |
| Nov-2016 | 69,896,800 | | | |
| Dec-2016 | 74,813,046 | | | |
| Jan-2017 | 56,284,800 | | | |
| Feb-2017 | 75,046,400 | | | |
| Mar-2017 | 69,616,699 | | | |
| Apr-2017 | 48,864,600 | | | |
| May-2017 | 65,152,800 | | | |
| Jun-2017 | 74,724,461 | | | |
| Jul-2017 | 52,391,200 | | | |
| Aug-2017 | 69,854,900 | | | |
| Sep-2017 | 81,123,442 | | | |
| Oct-2017 | 53,302,200 | | | |
| Nov-2017 | 71,069,600 | | | |
| Dec-2017 | 81,404,653 | | | |
| Jan-2018 | 57,354,400 | | | |
| Feb-2018 | 76,562,400 | | | |
| Mar-2018 | 72,622,677 | | | |
| Apr-2018 | 50,624,300 | | | |
| May-2018 | 76,250,406 | | | |