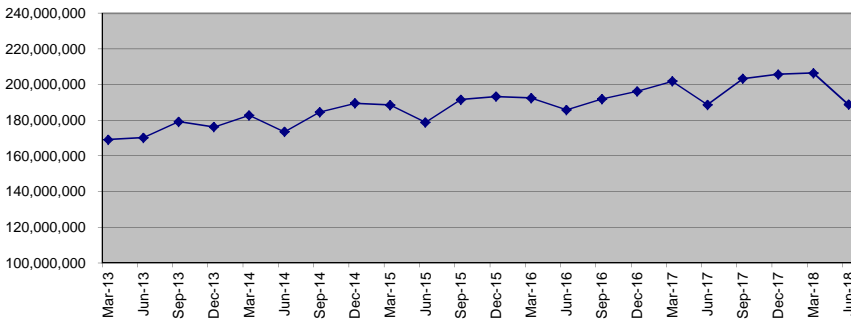
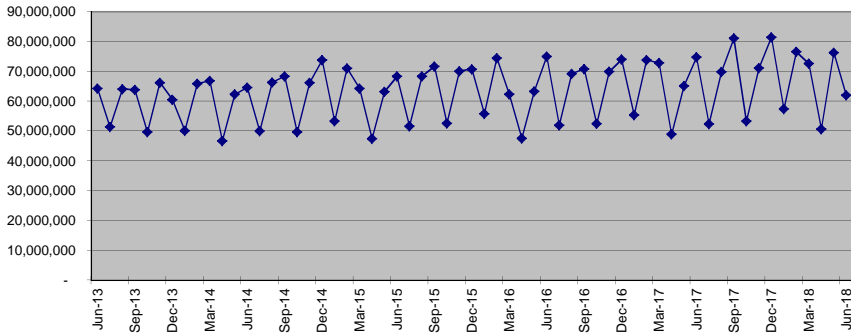


Proposition A
Quarterly Sales Tax Cash Receipts



Proposition A
Monthly Sales Tax Cash Receipts



	Monthly Receipts	Quarterly Receipts	% Change Same Period Prior Year	
Jan-2012	47,244,200	Sep-2009	137,972,623	-20.22%
Feb-2012	59,978,000	Dec-2009	138,493,579	-18.54%
Mar-2012	55,757,483	Mar-2010	141,745,979	-5.63%
Apr-2012	43,229,100	Jun-2010	137,026,066	1.90%
May-2012	54,293,800	Sep-2010	143,946,727	4.33%
Jun-2012	62,635,846	Dec-2010	149,679,595	8.08%
Jul-2012	47,364,700	Mar-2011	150,612,671	6.26%
Aug-2012	59,163,600	Jun-2011	147,818,378	7.88%
Sep-2012	61,670,555	Sep-2011	155,334,683	7.91%
Oct-2012	49,144,700	Dec-2011	164,168,373	9.68%
Nov-2012	61,734,800	Mar-2012	162,979,683	8.21%
Dec-2012	61,037,791	Jun-2012	160,158,746	8.35%
Jan-2013	47,500,600	Sep-2012	168,198,855	8.28%
Feb-2013	63,150,600	Dec-2012	171,917,291	4.72%
Mar-2013	58,513,076	Mar-2013	169,164,276	3.79%
Apr-2013	47,517,300	Jun-2013	170,227,205	6.29%
May-2013	58,431,600	Sep-2013	179,196,966	6.54%
Jun-2013	64,278,305	Dec-2013	176,293,223	2.55%
Jul-2013	51,346,700	Mar-2014	182,774,563	8.05%
Aug-2013	64,075,200	Jun-2014	173,574,333	1.97%
Sep-2013	63,775,066	Sep-2014	184,585,161	3.01%
Oct-2013	49,635,000	Dec-2014	189,544,392	7.52%
Nov-2013	66,180,000	Mar-2015	188,558,173	3.16%
Dec-2013	60,478,223	Jun-2015	178,912,650	3.08%
Jan-2014	50,074,100	Sep-2015	191,597,609	3.80%
Feb-2014	65,840,300	Dec-2015	193,325,465	1.99%
Mar-2014	66,860,163	Mar-2016	192,534,361	2.11%
Apr-2014	46,709,600	Jun-2016	185,841,805	3.87%
May-2014	62,279,500	Sep-2016	191,928,471	0.17%
Jun-2014	64,585,233	Dec-2016	196,279,771	1.53%
Jul-2014	49,950,800	Mar-2017	201,891,203	4.86%
Aug-2014	66,324,800	Jun-2017	188,745,386	1.56%
Sep-2014	68,309,561	Sep-2017	203,348,482	5.95%
Oct-2014	49,627,600	Dec-2017	205,806,117	4.85%
Nov-2014	66,170,100	Mar-2018	206,474,450	2.27%
Dec-2014	73,746,692	Jun-2018	188,858,440	0.06%
Jan-2015	53,257,300			
Feb-2015	71,009,700			
Mar-2015	64,291,173			
Apr-2015	47,415,700			
May-2015	63,220,900			
Jun-2015	68,276,050			
Jul-2015	51,646,900			
Aug-2015	68,314,200			
Sep-2015	71,636,509			
Oct-2015	52,541,000			
Nov-2015	70,054,600			
Dec-2015	70,729,865			
Jan-2016	55,829,400			
Feb-2016	74,439,200			
Mar-2016	62,265,761			
Apr-2016	47,500,600			
May-2016	63,334,100			
Jun-2016	75,007,105			
Jul-2016	51,917,900			
Aug-2016	69,223,800			
Sep-2016	70,786,771			
Oct-2016	52,422,600			
Nov-2016	69,896,800			
Dec-2016	73,960,371			
Jan-2017	55,334,600			
Feb-2017	73,779,400			
Mar-2017	72,777,203			
Apr-2017	48,864,300			
May-2017	65,152,400			
Jun-2017	74,728,686			
Jul-2017	52,391,700			
Aug-2017	69,855,600			
Sep-2017	81,101,182			
Oct-2017	53,302,800			
Nov-2017	71,070,200			
Dec-2017	81,433,317			
Jan-2018	57,354,200			
Feb-2018	76,532,000			
Mar-2018	72,558,250			
Apr-2018	50,623,400			
May-2018	76,270,607			
Jun-2018	61,964,432			