
Table of Contents

CHAPTER 6: PRIME CONTRACTOR AND SUBCONTRACTOR AVAILABILITY ANALYSIS..... 6-1

I. INTRODUCTION..... 6-1

II. PRIME CONTRACTOR AVAILABILITY DATA SOURCES..... 6-2

A. IDENTIFICATION OF BUSINESSES WITHIN THE MARKET AREA 6-2

B. PRIME CONTRACTOR SOURCES 6-3

C. DETERMINATION OF WILLINGNESS 6-4

D. DISTRIBUTION OF AVAILABLE PRIME CONTRACTORS BY SOURCE, ETHNICITY, AND GENDER..... 6-5

III. CAPACITY 6-8

A. SIZE OF CONTRACTS ANALYZED 6-8

B. LARGEST M/WBE CONTRACT AWARDED BY METRO, BY INDUSTRY..... 6-15

IV. WEIGHTED AVAILABILITY 6-15

V. PRIME CONTRACTOR AVAILABILITY ANALYSIS 6-16

A. PRIME CONTRACTOR AVAILABILITY – ALL INDUSTRIES 6-17

B. CONSTRUCTION PRIME CONTRACTOR AVAILABILITY 6-19

C. ARCHITECTURE AND ENGINEERING PRIME CONTRACTOR AVAILABILITY ... 6-21

D. MISCELLANEOUS AND OTHER PROFESSIONAL SERVICES PRIME CONTRACTOR AVAILABILITY 6-23

E. GOODS AND OTHER SERVICES PRIME CONTRACTOR AVAILABILITY 6-25

VI. SUBCONTRACTOR AVAILABILITY ANALYSIS..... 6-27



Table of Contents

A. SOURCES OF POTENTIALLY WILLING AND ABLE SUBCONTRACTORS AND AVAILABILITY	6-27
B. DETERMINATION OF SUBCONTRACTOR WILLINGNESS AND CAPACITY.....	6-27
C. SIZE OF SUBCONTRACTS ANALYZED	6-27
D. CONSTRUCTION SUBCONTRACTOR AVAILABILITY	6-33
E. ARCHITECTURE AND ENGINEERING SUBCONTRACTOR AVAILABILITY	6-35
F. MISCELLANEOUS AND OTHER PROFESSIONAL SERVICES SUBCONTRACTOR AVAILABILITY	6-37



List of Tables

TABLE 6.01:	PRIME CONTRACTOR AVAILABILITY DATA SOURCES.....	6-3
TABLE 6.02:	DISTRIBUTION OF PRIME CONTRACTOR AVAILABILITY DATA SOURCES, ALL INDUSTRIES.....	6-5
TABLE 6.03:	DISTRIBUTION OF PRIME CONTRACTOR AVAILABILITY DATA SOURCES, CONSTRUCTION.....	6-6
TABLE 6.04:	DISTRIBUTION OF PRIME CONTRACTOR AVAILABILITY DATA SOURCES, ARCHITECTURE AND ENGINEERING.....	6-6
TABLE 6.05:	DISTRIBUTION OF PRIME CONTRACTOR AVAILABILITY DATA SOURCES, MISCELLANEOUS AND PROFESSIONAL SERVICES.....	6-7
TABLE 6.06:	DISTRIBUTION OF PRIME CONTRACTOR AVAILABILITY DATA SOURCES, GOODS AND OTHER SERVICES.....	6-7
TABLE 6.07:	CONTRACTS BY SIZE, ALL INDUSTRIES,.....	6-10
TABLE 6.08:	CONSTRUCTION CONTRACTS BY SIZE,.....	6-11
TABLE 6.09:	ARCHITECTURE AND ENGINEERING CONTRACTS BY SIZE, JANUARY 1, 2008 TO DECEMBER 31, 2010.....	6-12
TABLE 6.10:	MISCELLANEOUS AND OTHER PROFESSIONAL SERVICES CONTRACTS BY SIZE, JANUARY 1, 2008 TO DECEMBER 31, 2010	6-13
TABLE 6.11:	GOODS AND OTHER SERVICES CONTRACTS BY SIZE, JANUARY 1, 2008 TO DECEMBER 31, 2010.....	6-14
TABLE 6.12:	LARGEST M/WBE CONTRACTS AWARDED BY METRO	6-15
TABLE 6.13:	AVAILABLE PRIME CONTRACTORS – ALL INDUSTRIES.....	6-18
TABLE 6.14:	AVAILABLE CONSTRUCTION PRIME CONTRACTORS.....	6-20
TABLE 6.15:	AVAILABLE ARCHITECTURE AND ENGINEERING PRIME CONTRACTORS..	6-22
TABLE 6.16:	AVAILABLE MISCELLANEOUS AND OTHER	



PROFESSIONAL SERVICES PRIME CONTRACTORS	6-24
TABLE 6.17: GOODS AND OTHER SERVICES PRIME CONTRACTORS	6-26
TABLE 6.18: UNIQUE SUBCONTRACTOR AVAILABILITY DATA SOURCES	6-27
TABLE 6.19: SUBCONTRACTS BY SIZE: ALL INDUSTRIES, JANUARY 1, 2008 TO DECEMBER 31, 2010	6-29
TABLE 6.20: CONSTRUCTION SUBCONTRACTS BY SIZE: JANUARY 1, 2008 TO DECEMBER 31, 2010	6-30
TABLE 6.21: ARCHITECTURE AND ENGINEERING SUBCONTRACTS BY SIZE: JANUARY 1, 2008 TO DECEMBER 31, 2010	6-31
TABLE 6.22: MISCELLANEOUS AND OTHER PROFESSIONAL SERVICES SUBCONTRACTS BY SIZE: JANUARY 1, 2008 TO DECEMBER 31, 2010	6-32
TABLE 6.23: AVAILABLE CONSTRUCTION SUBCONTRACTORS	6-34
TABLE 6.24: AVAILABLE ARCHITECTURE AND ENGINEERING SUBCONTRACTORS	6-36
TABLE 6.25: AVAILABLE MISCELLANEOUS AND OTHER PROFESSIONAL SERVICES SUBCONTRACTORS	6-38



CHAPTER 6: PRIME CONTRACTOR AND SUBCONTRACTOR AVAILABILITY ANALYSIS

I. INTRODUCTION

Availability is defined, according to *Croson*, as the number of qualified businesses in the jurisdiction's market area that are willing and able to provide goods or services.¹ To determine availability, qualified minority and woman-owned business enterprises (M/WBEs) and non-M/WBEs within the jurisdiction's market area that are ready, willing, and able to provide the goods and services need to be enumerated. The Los Angeles County Metropolitan Transportation Authority's (Metro) market area for the four industries—construction, architecture and engineering, miscellaneous and other professional services, and goods and other services—as defined in *Chapter 5: Market Area Analysis* is Los Angeles County.

When considering sources for determining the number of willing and able M/WBEs and non-M/WBEs in the market area, the selection must be based on whether two aspects about the population in question can be gauged from the sources. One consideration is a business's interest in doing business with the jurisdiction, as implied by the term "willing," and the other is its ability or capacity to provide a service or good, as implied by the term "able."

The compiled list of available businesses includes M/WBEs and non-M/WBEs in the construction, architecture and engineering, miscellaneous and other professional services, and goods and other services areas. Separate availability lists were compiled by industry for prime contractors and subcontractors. A distribution of the available businesses is presented in this chapter by ethnicity, gender, and industry.



¹ *City of Richmond v. J.A. Croson Co.*, 488 U.S. 469, 509 (1989).

II. PRIME CONTRACTOR AVAILABILITY DATA SOURCES

A. Identification of Businesses within the Market Area

Three sources were used to identify businesses in the market area that provide the goods and services that Metro procures. The first source was Metro's utilized businesses, the second source was local, state and federal government certification lists, and the third source was business associations' membership lists. Any business identified from more than one source was counted only once in an industry. A business that was willing to provide the goods or services in more than one industry was listed in each relevant industry's availability list.

The three sources were ranked with the highest rank assigned to the utilized businesses. Government certification lists were ranked second, business association membership lists were ranked third, and business community meetings were ranked fourth. Therefore, the first source used to build the availability list was Metro's utilized businesses. Businesses identified on certification lists were then appended to the list. The certification lists were collected from state and local government certification agencies. Businesses on association membership lists were also added to the availability list. The business associations included trade and professional groups, and Chambers of Commerce.

Extensive targeted outreach to business associations in Metro's market area was performed to identify and secure business membership lists. Business community meetings, letters, and telephone contact with the associations garnered a number of membership lists. From the three sources, 4,202 unique market area businesses that provided goods or services in one or more of the four industries were identified. An accounting of the willing businesses derived by source is listed below:

1. Metro's Records

All of Metro's utilized businesses and Metro's pre-qualified contractors and consultants were determined to be willing. There were 133 utilized businesses. From these sources, 80 unique market area businesses were added to the availability list.

2. Government Certification Lists

The market area businesses on the government certification lists were considered to be willing. There were 22,400 certified businesses. From these certification lists, 4,042 unique certified businesses were added to the availability list.



3. Business Association Membership Lists

Membership lists were obtained from 11 business associations located in the market area. From the business association membership lists, 688 market area businesses in the four industries were identified. The composite list was queried for businesses with a telephone number. There were 666 businesses with telephone numbers. These businesses were surveyed to determine their willingness to contract with Metro. There were 80 unique willing businesses from the membership lists added to the availability list.

B. Prime Contractor Sources

Table 6.01 lists the sources from which the final list of willing businesses was compiled.

Table 6.01: Prime Contractor Availability Data Sources

Source	Type of Information
Metro Records	
Metro Utilized Businesses	DBEs and non-DBEs
Government Certification Lists	
California Department of General Services Certification List	M/WBEs and non-M/WBEs
California Public Utilities Commission Certification List	M/WBEs
California Department of Transportation Unified Certification Program DBE Certification List	DBEs
California Department of Transportation SWBE and SMBE Certification List	S/M/WBEs
City of Long Beach Certification List	M/WBEs
City of Los Angeles Office of Contract Compliance M/WBE Certification List	M/WBEs
Los Angeles World Airports M/WBE Certification List	M/WBEs
Metro Certified Businesses	DBEs
Metro Vendors List	M/WBEs and non-M/WBEs
ProNet-8a Program-Los Angeles County	M/WBEs and non-M/WBEs



Source	Type of Information
Business Association Membership Lists	
Alhambra Chamber of Commerce	M/WBEs and non-M/WBEs
Anaheim Chamber of Commerce	M/WBEs and non-M/WBEs
Asian American Architects & Engineers Association	M/WBEs
California Association of General Contractors	M/WBEs and non-M/WBEs
Chinese American Construction Professionals	M/WBEs
Glendale Chamber of Commerce	M/WBEs
Greater Los Angeles African American Chamber of Commerce	M/WBEs
Hispanic Chamber of Commerce	M/WBEs
Inglewood Airport Area Chamber of Commerce	M/WBEs and non-M/WBEs
Irwindale Chamber of Commerce	M/WBEs and non-M/WBEs
Latino Business Chamber of Greater Los Angeles	M/WBEs

C. Determination of Willingness

The first component of the availability requirement set forth in *Croson* is the willingness of a business to perform the contracts in the relevant jurisdiction where the contracts are awarded.² All businesses included in the availability analysis were determined to be willing to contract with Metro. “Willingness” is defined in *Croson* and its progeny as an interest in doing government contracting. Businesses identified from the sources are listed below in Table 6.01 demonstrated their willingness to perform on public contracts. To be classified as “willing,” the business had either bid on a government contract, secured government certification, or been listed on a business organization or chamber of commerce’s membership list and affirmed an interest in contracting with Metro through the willingness survey. Only businesses on association membership lists that affirmed their willingness through a survey were included in the availability list.



² *Croson*, 488 U.S. 469.

D. Distribution of Available Prime Contractors by Source, Ethnicity, and Gender

Tables 6.02 through 6.05 present the distribution of willing prime contractors by source. The highest ranked source was the prime contractors utilized by Metro. Each ranked business is *counted only once*. For example, a utilized prime contractor counted in the prime contractor utilization source was not counted a second time as a bidder, certified business, or company identified from a business association list.

As noted in Table 6.02, 98.1 percent of the businesses on the unique list of available prime contractors were obtained from Metro’s records and government certification lists. Companies identified through the business community meetings and willingness survey represents 1.9 percent of the willing businesses.

Table 6.02: Distribution of Prime Contractor Availability Data Sources, All Industries

Sources	M/WBEs Percentage	Non-M/WBEs Percentage	Source Percentage
Prime Contractor Utilization	1.28%	2.38%	1.90%
Certification Lists	96.84%	95.71%	96.19%
Subtotal	98.11%	98.08%	98.10%
Willingness Survey	1.89%	1.92%	1.90%
Subtotal	1.89%	1.92%	1.90%
Grand Total*	100.00%	100.00%	100.00%

*The percentages may not total 100 percent due to rounding



A distribution of available businesses by source also was calculated for each industry. As noted in Table 6.03, 99.51 percent of construction businesses identified were derived from Metro records and government certification lists. Companies identified through the business community meetings and willingness survey represents 0.49 percent of the willing businesses.

Table 6.03: Distribution of Prime Contractor Availability Data Sources, Construction

Sources	M/WBEs Percentage	Non M/WBEs Percentage	Source Percentage
Prime Contractor Utilization	0.32%	1.40%	0.99%
Certification Lists	99.19%	98.10%	98.52%
Subtotal	99.52%	99.50%	99.51%
Willingness Survey	0.48%	0.50%	0.49%
Subtotal	0.48%	0.50%	0.49%
Grand Total*	100.00%	100.00%	100.00%

*The percentages may not total 100 percent due to rounding

Table 6.04 depicts the data sources for the available architecture and engineering prime contractors. As noted, 98.27 percent of architecture and engineering businesses identified were derived from Metro records and government certification lists. Companies identified through the business community meetings and willingness survey represents 1.73 percent of the willing businesses.

Table 6.04: Distribution of Prime Contractor Availability Data Sources, Architecture and Engineering

Sources	M/WBEs Percentage	Non M/WBEs Percentage	Source Percentage
Prime Contractor Utilization	1.27%	2.21%	1.73%
Certification Lists	96.20%	96.90%	96.54%
Subtotal	97.47%	99.12%	98.27%
Willingness Survey	2.53%	0.88%	1.73%
Subtotal	2.53%	0.88%	1.73%
Grand Total*	100.00%	100.00%	100.00%

*The percentages may not total 100 percent due to rounding



Table 6.05 depicts the data sources for the available miscellaneous and professional services prime contractors. As noted, 97.07 percent of the miscellaneous and professional services businesses identified were derived from Metro records and government certification lists. Companies identified through the business community meetings and willingness survey represents 2.93 percent of the willing businesses.

Table 6.05: Distribution of Prime Contractor Availability Data Sources, Miscellaneous and Professional Services

Sources	M/WBEs Percentage	Non M/WBEs Percentage	Source Percentage
Prime Contractor Utilization	2.26%	3.77%	2.93%
Certification Lists	95.18%	92.83%	94.14%
Subtotal	97.44%	96.60%	97.07%
Willingness Survey	2.56%	3.40%	2.93%
Subtotal	2.56%	3.40%	2.93%
Grand Total*	100.00%	100.00%	100.00%

*The percentages may not total 100 percent due to rounding

Table 6.06 depicts the data sources for the goods and other services prime contractors. As noted, 96.85 percent of the goods and other services businesses identified were derived from Metro records and government certification lists. Companies identified through the business community meetings and willingness survey represents 3.15 percent of the willing businesses.

Table 6.06: Distribution of Prime Contractor Availability Data Sources, Goods and Other Services

Sources	M/WBEs Percentage	Non M/WBEs Percentage	Source Percentage
Prime Contractor Utilization	1.07%	2.81%	2.28%
Certification Lists	96.07%	93.92%	94.57%
Subtotal	97.14%	96.72%	96.85%
Willingness Survey	2.86%	3.28%	3.15%
Subtotal	2.86%	3.28%	3.15%
Grand Total*	100.00%	100.00%	100.00%

*The percentages may not total 100 percent due to rounding



III. CAPACITY

The second component of the availability requirement set forth in *Croson* is the capacity or ability of a business to perform the contracts the jurisdiction awards.³ However, *Croson* did not set forth the elements to satisfy the capacity requirements. The cases where capacity has been considered have involved large, competitively bid construction prime contracts. The capacity of willing market area businesses to do business with Metro was assessed using three approaches.

- The size of all prime contracts awarded by Metro was analyzed to determine the capacity needed to perform the average awarded contract for each industry.
- The largest contracts awarded to M/WBEs were identified to determine demonstrated ability to win large, competitively bid contracts.
- Metro accepts certifications from businesses certified from the California Unified Certification Program (CUCP). The certification standards established by Metro and the CUCP are consistent with the uniform certification program requirements set forth in 49 CFR Section 26.81. Metro's accepted certification processes, which includes the CUCP, were assessed to determine if those processes meet the standard set in *Contractors Ass'n. of Eastern Pennsylvania v. City of Philadelphia (Philadelphia)*.⁴ *Philadelphia* found the U.S. Department of Transportation (USDOT) certification sufficient to measure capacity.

A. Size of Contracts Analyzed

In *Associated General Contractors of America v. City of Columbus* and *Engineering Contractors Ass'n. of South Florida v. Metropolitan Dade City* the courts were concerned with the capacity of the enumerated businesses to bid on large, competitively bid contracts. It should also be noted that the focus in both cases was on the bidder's size and ability to perform on large, competitively bid construction contracts.⁵

Metro's construction, architecture and engineering, miscellaneous and other professional services, and goods and other services contracts were analyzed to determine the size of awarded contracts in order to gauge the capacity required to perform on Metro's contracts. The size distribution illustrates the fact that the majority of Metro's contracts

³ *Croson*, 488 U.S. 469.

⁴ *Contractors Ass'n. of Eastern Pennsylvania v. City of Philadelphia*, 6 F.3d 990 (3d Cir. 1993), on remand, 893 F. Supp. 419 (E.D. Penn. 1995), *aff'd*, 91 F.3d 586 (3d Cir. 1996).

⁵ *Associated General Contractors of America v. City of Columbus*, 936 F. Supp. 1363 (S.D. Ohio Eastern Division, decided August 26, 1996), and *Engineering Contractors Ass'n. of South Florida v. Metropolitan Dade City*, 943 F. Supp. 1546 (S.D. Fla. 1996), *aff'd* 122 F.3d 895 (11th Cir. 1997). Writ of certiorari denied *Metropolitan Dade Participating Agencies v. Engineering Contrs. Ass'n.*, 523 U.S. 1004, 140 L. Ed. 2d 317, 118 S. Ct. 1186, (1998); related proceeding at *Hershell Gill Consulting Eng'rs, Inc. v. Miami-Dade Participating Agencies*, 2004 U.S. Dist. LEXIS 17197 (S.D. Fla., Aug. 24, 2004). Decision was vacated by the 6th Circuit Court of Appeals.



were under \$25,000. The distribution described in Table 6.07 illustrates that limited capacity is needed to perform the majority of Metro's contracts.

For the size analysis Metro's contracts were grouped into nine dollar ranges.⁶ Each industry was analyzed to determine the number and percentage of contracts that fell within the nine size categories. The size distribution of contracts awarded to non-minority males was then compared to the size distribution of contracts awarded to Caucasian females, minority females, and minority males.

Table 6.07, which presents the size distribution for contracts awarded within the nine dollar ranges in all industries combined, demonstrates that 43.96 percent of Metro's contracts were less than \$25,000; 54.4 percent were less than \$50,000; 67.58 percent were less than \$100,000; and 82.97 percent were less than \$500,000. Only 17.03 percent of Metro's contracts were \$500,000 or more.

The percentage of contracts Metro awarded to non-minority males, women-owned businesses, and minority male firms was comparable under \$500,000. Therefore the formal prime contract analysis was limited to contracts under \$500,000. This analysis addressed the concern that capping the capacity required to perform larger contracts had not been documented.

1. Construction Contracts by Size

Table 6.08 depicts Metro's construction contracts awarded within the nine dollar ranges. Contracts valued at less than \$25,000 were 22.58 percent; those less than \$50,000 were 29.03 percent; those less than \$100,000 were 38.71 percent; and those less than \$500,000 were 58.06 percent.

2. Architecture and Engineering Contracts by Size

Table 6.09 depicts Metro's architecture and engineering contracts within the nine dollar ranges. Contracts valued at less than \$25,000 were 23.53 percent; those less than \$50,000 were 29.41 percent; those less than \$100,000 were 29.41 percent; and those less than \$500,000 were 52.94 percent.

3. Miscellaneous and Other Professional Services Contracts by Size

Table 6.10 depicts Metro's miscellaneous and other professional services contracts within the nine dollar ranges. Contracts valued at less than \$25,000 were 33.33 percent; those less than \$50,000 were 49.21 percent; those less than \$100,000 were 65.08 percent; and those less than \$500,000 were 93.65 percent.



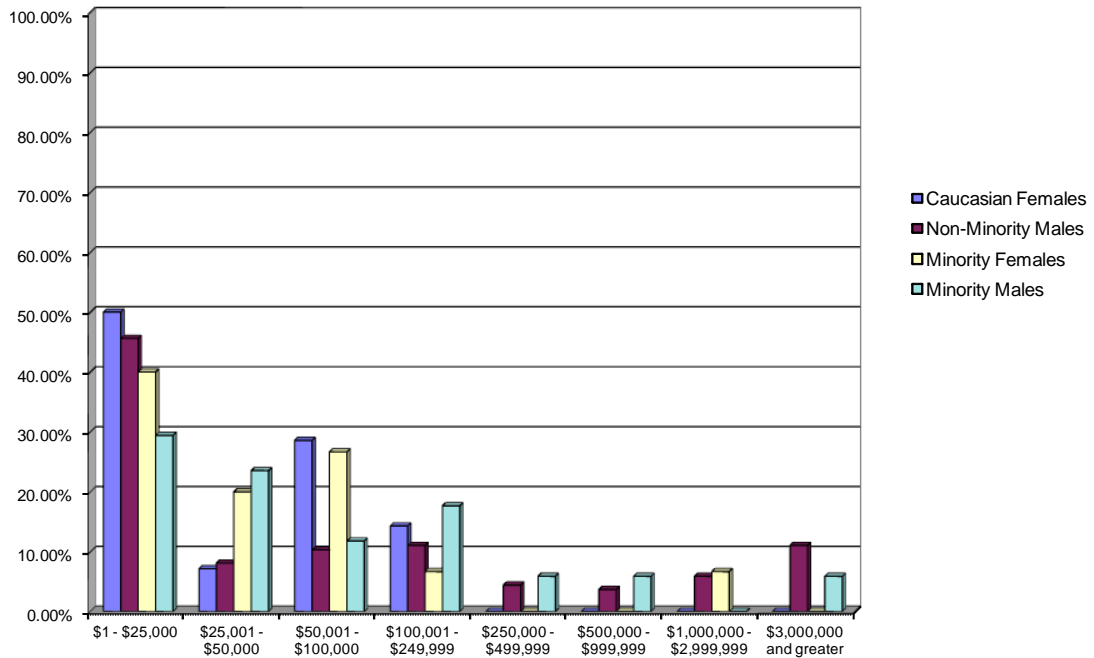
⁶ The nine dollar ranges are \$1 to \$25,000; \$25,001 to \$50,000; \$50,001 to \$100,000; \$100,001 to \$250,000; \$250,001 to \$500,000; \$500,001 to \$750,000; \$750,001 to \$1,000,000; \$1,000,001 to \$3,000,000; and \$3,000,001 and greater.

4. Goods and Other Services Contracts by Size

Table 6.07, which presents the size distribution for contracts awarded within the nine dollar ranges in all industries combined, demonstrates that 43.96 percent of Metro's contracts were less than \$25,000; 54.4 percent were less than \$50,000; 67.58 percent were less than \$100,000; and 82.97 percent

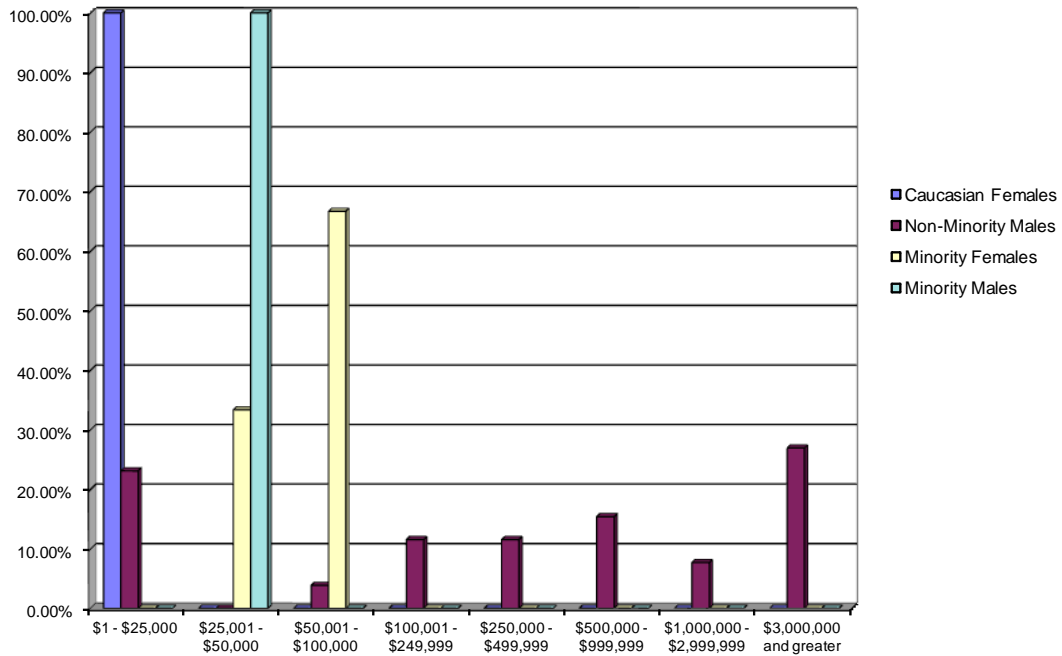
**Table 6.07: Contracts by Size, All Industries,
January 1, 2008 to December 31, 2010**

Size	Non-Minority				Minority				Total	
	Females		Males		Females		Males		Freq	Percent
	Freq	Percent	Freq	Percent	Freq	Percent	Freq	Percent		
\$1 - \$25,000	7	50.00%	62	45.59%	6	40.00%	5	29.41%	80	43.96%
\$25,001 - \$50,000	1	7.14%	11	8.09%	3	20.00%	4	23.53%	19	10.44%
\$50,001 - \$100,000	4	28.57%	14	10.29%	4	26.67%	2	11.76%	24	13.19%
\$100,001 - \$249,999	2	14.29%	15	11.03%	1	6.67%	3	17.65%	21	11.54%
\$250,000 - \$499,999	0	0.00%	6	4.41%	0	0.00%	1	5.88%	7	3.85%
\$500,000 - \$999,999	0	0.00%	5	3.68%	0	0.00%	1	5.88%	6	3.30%
\$1,000,000 - \$2,999,999	0	0.00%	8	5.88%	1	6.67%	0	0.00%	9	4.95%
\$3,000,000 and greater	0	0.00%	15	11.03%	0	0.00%	1	5.88%	16	8.79%
Total	14	100.00%	136	100.00%	15	100.00%	17	100.00%	182	100.00%



**Table 6.08: Construction Contracts by Size,
January 1, 2008 to December 31, 2010**

Size	Non-Minority				Minority				Total	
	Females		Males		Females		Males		Freq	Percent
	Freq	Percent	Freq	Percent	Freq	Percent	Freq	Percent		
\$1 - \$25,000	1	100.00%	6	23.08%	0	0.00%	0	0.00%	7	22.58%
\$25,001 - \$50,000	0	0.00%	0	0.00%	1	33.33%	1	100.00%	2	6.45%
\$50,001 - \$100,000	0	0.00%	1	3.85%	2	66.67%	0	0.00%	3	9.68%
\$100,001 - \$249,999	0	0.00%	3	11.54%	0	0.00%	0	0.00%	3	9.68%
\$250,000 - \$499,999	0	0.00%	3	11.54%	0	0.00%	0	0.00%	3	9.68%
\$500,000 - \$999,999	0	0.00%	4	15.38%	0	0.00%	0	0.00%	4	12.90%
\$1,000,000 - \$2,999,999	0	0.00%	2	7.69%	0	0.00%	0	0.00%	2	6.45%
\$3,000,000 and greater	0	0.00%	7	26.92%	0	0.00%	0	0.00%	7	22.58%
Total	1	100.00%	26	100.00%	3	100.00%	1	100.00%	31	100.00%



**Table 6.09: Architecture and Engineering Contracts by Size,
January 1, 2008 to December 31, 2010**

Size	Non-Minority				Minority				Total	
	Females		Males		Females		Males		Freq	Percent
	Freq	Percent	Freq	Percent	Freq	Percent	Freq	Percent		
\$1 - \$25,000	1	100.00%	1	8.33%	0	0.00%	2	50.00%	4	23.53%
\$25,001 - \$50,000	0	0.00%	0	0.00%	0	0.00%	1	25.00%	1	5.88%
\$50,001 - \$100,000	0	0.00%	0	0.00%	0	0.00%	0	0.00%	0	0.00%
\$100,001 - \$249,999	0	0.00%	3	25.00%	0	0.00%	0	0.00%	3	17.65%
\$250,000 - \$499,999	0	0.00%	0	0.00%	0	0.00%	1	25.00%	1	5.88%
\$500,000 - \$999,999	0	0.00%	1	8.33%	0	0.00%	0	0.00%	1	5.88%
\$1,000,000 - \$2,999,999	0	0.00%	3	25.00%	0	0.00%	0	0.00%	3	17.65%
\$3,000,000 and greater	0	0.00%	4	33.33%	0	0.00%	0	0.00%	4	23.53%
Total	1	100.00%	12	100.00%	0	0.00%	4	100.00%	17	100.00%

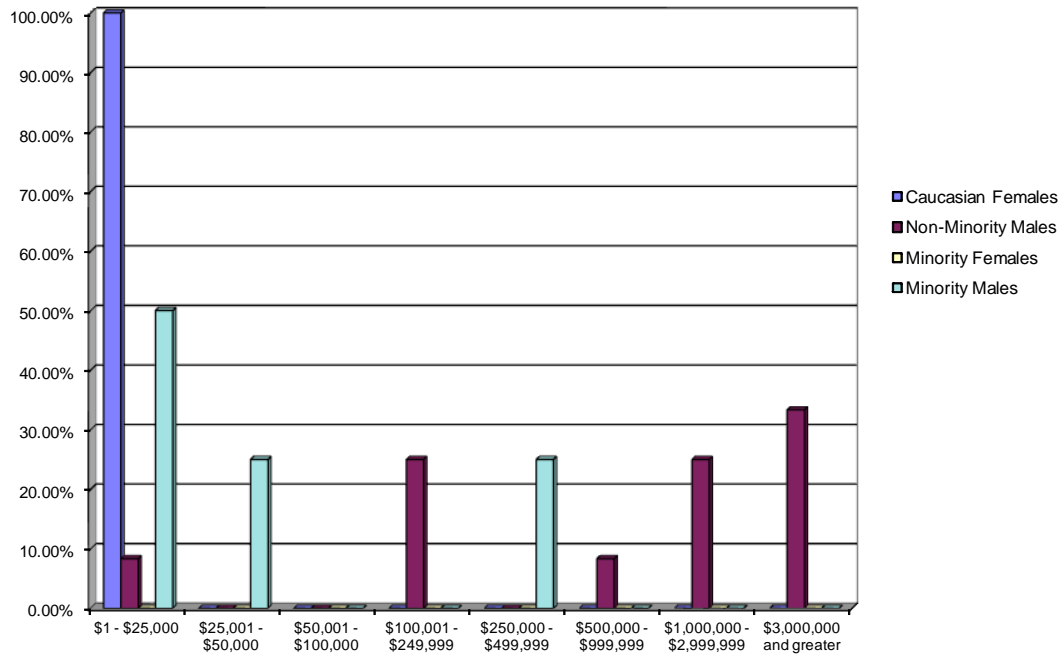
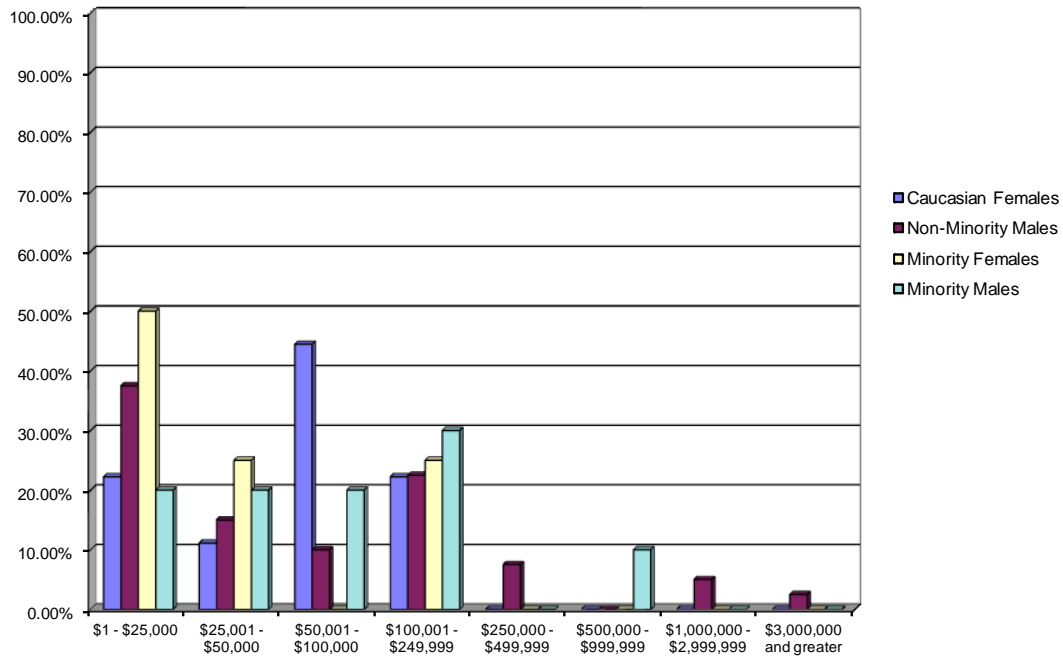


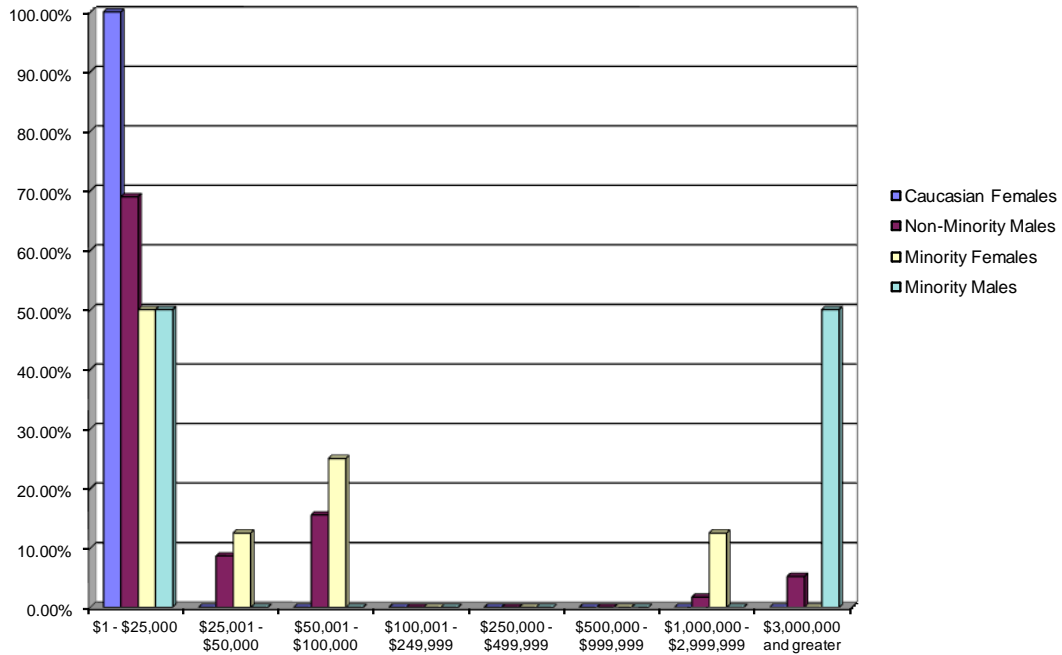
Table 6.10: Miscellaneous and Other Professional Services Contracts by Size, January 1, 2008 to December 31, 2010

Size	Non-Minority				Minority					
	Females		Males		Females		Males		Total	
	Freq	Percent	Freq	Percent	Freq	Percent	Freq	Percent	Freq	Percent
\$1 - \$25,000	2	22.22%	15	37.50%	2	50.00%	2	20.00%	21	33.33%
\$25,001 - \$50,000	1	11.11%	6	15.00%	1	25.00%	2	20.00%	10	15.87%
\$50,001 - \$100,000	4	44.44%	4	10.00%	0	0.00%	2	20.00%	10	15.87%
\$100,001 - \$249,999	2	22.22%	9	22.50%	1	25.00%	3	30.00%	15	23.81%
\$250,000 - \$499,999	0	0.00%	3	7.50%	0	0.00%	0	0.00%	3	4.76%
\$500,000 - \$999,999	0	0.00%	0	0.00%	0	0.00%	1	10.00%	1	1.59%
\$1,000,000 - \$2,999,999	0	0.00%	2	5.00%	0	0.00%	0	0.00%	2	3.17%
\$3,000,000 and greater	0	0.00%	1	2.50%	0	0.00%	0	0.00%	1	1.59%
Total	9	100.00%	40	100.00%	4	100.00%	10	100.00%	63	100.00%



**Table 6.11: Goods and Other Services Contracts by Size,
January 1, 2008 to December 31, 2010**

Size	Non-Minority				Minority				Total	
	Females		Males		Females		Males		Freq	Percent
	Freq	Percent	Freq	Percent	Freq	Percent	Freq	Percent		
\$1 - \$25,000	3	100.00%	40	68.97%	4	50.00%	1	50.00%	48	67.61%
\$25,001 - \$50,000	0	0.00%	5	8.62%	1	12.50%	0	0.00%	6	8.45%
\$50,001 - \$100,000	0	0.00%	9	15.52%	2	25.00%	0	0.00%	11	15.49%
\$100,001 - \$249,999	0	0.00%	0	0.00%	0	0.00%	0	0.00%	0	0.00%
\$250,000 - \$499,999	0	0.00%	0	0.00%	0	0.00%	0	0.00%	0	0.00%
\$500,000 - \$999,999	0	0.00%	0	0.00%	0	0.00%	0	0.00%	0	0.00%
\$1,000,000 - \$2,999,999	0	0.00%	1	1.72%	1	12.50%	0	0.00%	2	2.82%
\$3,000,000 and greater	0	0.00%	3	5.17%	0	0.00%	1	50.00%	4	5.63%
Total	3	100.00%	58	100.00%	8	100.00%	2	100.00%	71	100.00%



B. Largest M/WBE Contract Awarded by Metro, by Industry

M/WBEs were awarded large contracts in each industry. The distribution of the largest contracts Metro awarded to M/WBEs is depicted in Table 6.12. In some industries, M/WBEs were awarded very large, competitively bid contracts. The utilization analysis shows that M/WBEs demonstrated the capacity to successfully compete for contracts as large as \$97,000 in construction, \$425,000 in architecture and engineering, \$19 million in miscellaneous and professional services, and \$2.2 million in goods and other services.

Table 6.12: Largest M/WBE Contracts Awarded by Metro

Ethnic/Gender Group	Construction	Architecture and Engineering	Miscellaneous and Other Professional Services	Goods and Other Services
African American Female	---	---	\$145,000	---
African American Male	---	---	---	---
Asian-Pacific American Female	---	---	---	---
Asian-Pacific American Male	\$35,430	\$9,056	---	\$4,195
Subcontinent Asian American Female	\$48,059	---	---	---
Subcontinent Asian American Male	---	\$560	---	---
Hispanic American Female	\$97,762	---	\$32,650	\$2,201,173
Hispanic American Male	---	\$425,070	\$760,167	\$19,080,767
Native American Female	---	---	---	---
Native American Male	---	---	---	---
Caucasian Female	\$12,654	\$10,000	\$170,000	\$21,056
Largest Dollar Amounts MBEs	\$97,762	\$425,070	\$760,167	\$19,080,767
Largest Dollar Amounts WBEs	\$97,762	\$10,000	\$170,000	\$2,201,173

(---) denotes a group that was not awarded any contracts within the respective industry.

IV. WEIGHTED AVAILABILITY

The availability of willing market area businesses was weighted according to NAICS code, so that Metro's contracting patterns could be more accurately reflected.

- Calculation of Weighted Construction Availability

All federally funded contracts awarded during the study period were assigned an NAICS code based on the description of the contract. A total of 52 NAICS codes were assigned to the awarded contracts. Weights were assigned based on the percentage of the total award amount in each NAICS code. As a result, the NAICS code with the highest associated dollars was assigned the highest weight. The weights were reflected according to the percentage of the total dollars awarded.



The businesses in the availability database were also classified according to NAICS code. The utilized firms in the availability lists were assigned the NAICS code as discussed above. The balance of the coding was derived from certification lists and Internet research.

The weights for each NAICS code were used as multipliers. The number of available businesses in each NAICS code was multiplied by the assigned weight. The total represented the number of available firms in each NAICS code. The total for each NAICS code was added together to calculate the overall weighted availability. The ethnicity and gender distribution percentages were then calculated based on the overall weighted availability.

V. PRIME CONTRACTOR AVAILABILITY ANALYSIS

The size of Metro's contracts demonstrates that the majority of the contracts are small, requiring limited capacity to perform. Furthermore, the awards Metro has made to M/WBEs demonstrate that the capacity of the available businesses is considerably greater than needed to bid on the majority of the contracts awarded in the four industries studied. Nevertheless, given the general concerns with capacity, prime contracts subject to the disparity analysis were limited to those under \$500,000. The prime contractor availability findings for Metro's market area are as follows:



A. Prime Contractor Availability - All Industries

The distribution of available prime contractors for all industries is summarized in Table 6.13 below. These ethnic and gender groups are defined in Table 3.01 of *Chapter 3: Prime Contractor Utilization Analysis*.

African Americans account for 9.38 percent of all businesses in the industries studied in Metro's market area.

Asian-Pacific Americans account for 9.32 percent of all businesses in the industries studied in Metro's market area.

Subcontinent Asian Americans account for 1.7 percent of all businesses in the industries studied in Metro's market area.

Hispanic Americans account for 12.48 percent of all businesses in the industries studied in Metro's market area.

Native Americans account for 0.82 percent of all businesses in the industries studied in Metro's market area.

Minority Business Enterprises account for 33.7 percent of all businesses in the industries studied in Metro's market area.

Caucasian Female Business Enterprises account for 8.08 percent of all businesses in the industries studied in Metro's market area.

Disadvantaged Business Enterprises account for 41.78 percent of all businesses in the industries studied in Metro's market area.

Non-Disadvantaged Business Enterprises account for 58.22 percent of businesses in the industries studied in Metro's market area.



Table 6.13: Available Prime Contractors – All Industries

Ethnicity	Percent of Businesses
African Americans	9.38%
Asian-Pacific Americans	9.32%
Subcontinent Asian Americans	1.70%
Hispanic Americans	12.48%
Native Americans	0.82%
Caucasian Females	8.08%
Non-Minority Males	58.22%
TOTAL	100.00%
Ethnicity and Gender	Percent of Businesses
African American Females	3.58%
African American Males	5.79%
Asian-Pacific American Females	2.35%
Asian-Pacific American Males	6.97%
Subcontinent Asian American Females	0.39%
Subcontinent Asian American Males	1.31%
Hispanic American Females	3.28%
Hispanic American Males	9.20%
Native American Females	0.28%
Native American Males	0.54%
Caucasian Females	8.08%
Caucasian Males	58.22%
TOTAL	100.00%
Minority and Gender	Percent of Businesses
Minority Females	9.89%
Minority Males	23.81%
Caucasian Females	8.08%
Non-Minority Males	58.22%
TOTAL	100.00%
Minority and Females	Percent of Businesses
Minority Business Enterprises	33.70%
Caucasian Female Business Enterprises	8.08%
Disadvantaged Business Enterprises	41.78%
Non Disadvantaged Business Enterprises	58.22%
TOTAL	100.00%



B. Construction Prime Contractor Availability

The distribution of available construction prime contractors is summarized in Table 6.14 below. These ethnic and gender groups are defined in Table 3.01 of *Chapter 3: Prime Contractor Utilization Analysis*.

African Americans account for 8.97 percent of the construction businesses in Metro's market area.

Asian-Pacific Americans account for 8.55 percent of the construction businesses in Metro's market area.

Subcontinent Asian Americans account for 1.25 percent of the construction businesses in Metro's market area.

Hispanic Americans account for 13.08 percent of the construction businesses in Metro's market area.

Native Americans account for 1.01 percent of the construction businesses in Metro's market area.

Minority Business Enterprises account for 32.86 percent of the construction businesses in Metro's market area.

Caucasian Female Business Enterprises account for 6.6 percent of the construction businesses in Metro's market area.

Disadvantaged Business Enterprises account for 39.47 percent of the construction businesses in Metro's market area.

Non-Disadvantaged Business Enterprises account for 60.53 percent of the construction businesses in Metro's market area.



Table 6.14: Available Construction Prime Contractors

Ethnicity	Percent of Businesses
African Americans	8.97%
Asian-Pacific Americans	8.55%
Subcontinent Asian Americans	1.25%
Hispanic Americans	13.08%
Native Americans	1.01%
Caucasian Females	6.60%
Non-Minority Males	60.53%
TOTAL	100.00%
Ethnicity and Gender	Percent of Businesses
African American Females	3.25%
African American Males	5.71%
Asian-Pacific American Females	1.89%
Asian-Pacific American Males	6.66%
Subcontinent Asian American Females	0.30%
Subcontinent Asian American Males	0.96%
Hispanic American Females	2.93%
Hispanic American Males	10.15%
Native American Females	0.34%
Native American Males	0.67%
Caucasian Females	6.60%
Caucasian Males	60.53%
TOTAL	100.00%
Minority and Gender	Percent of Businesses
Minority Females	8.71%
Minority Males	24.16%
Caucasian Females	6.60%
Non-Minority Males	60.53%
TOTAL	100.00%
Minority and Females	Percent of Businesses
Minority Business Enterprises	32.86%
Caucasian Female Business Enterprises	6.60%
Disadvantaged Business Enterprises	39.47%
Non Disadvantaged Business Enterprises	60.53%
TOTAL	100.00%



C. *Architecture and Engineering Prime Contractor Availability*

The distribution of available architecture and engineering contractors is summarized in Table 6.15 below. These ethnic and gender groups are defined in Table 3.01 of *Chapter 3: Prime Contractor Utilization Analysis*.

African Americans account for 9.51 percent of the architecture and engineering businesses in Metro's market area.

Asian-Pacific Americans account for 10.15 percent of the architecture and engineering businesses in Metro's market area.

Subcontinent Asian Americans account for 2.11 percent of the architecture and engineering businesses in Metro's market area.

Hispanic Americans account for 11.87 percent of the architecture and engineering businesses in Metro's market area.

Native Americans account for 0.71 percent of the architecture and engineering businesses in Metro's market area.

Minority Business Enterprises account for 34.36 percent of the architecture and engineering businesses in Metro's market area.

Caucasian Female Business Enterprises account for 9.29 percent of the architecture and engineering businesses in Metro's market area.

Disadvantaged Business Enterprises account for 43.65 percent of the architecture and engineering businesses in Metro's market area.

Non-Disadvantaged Business Enterprises account for 56.35 percent of the architecture and engineering businesses in Metro's market area.



Table 6.15: Available Architecture and Engineering Prime Contractors

Ethnicity	Percent of Businesses
African Americans	9.51%
Asian-Pacific Americans	10.15%
Subcontinent Asian Americans	2.11%
Hispanic Americans	11.87%
Native Americans	0.71%
Caucasian Females	9.29%
Non-Minority Males	56.35%
TOTAL	100.00%
Ethnicity and Gender	Percent of Businesses
African American Females	3.67%
African American Males	5.84%
Asian-Pacific American Females	2.71%
Asian-Pacific American Males	7.44%
Subcontinent Asian American Females	0.47%
Subcontinent Asian American Males	1.64%
Hispanic American Females	3.50%
Hispanic American Males	8.38%
Native American Females	0.23%
Native American Males	0.48%
Caucasian Females	9.29%
Caucasian Males	56.35%
TOTAL	100.00%
Minority and Gender	Percent of Businesses
Minority Females	10.59%
Minority Males	23.77%
Caucasian Females	9.29%
Non-Minority Males	56.35%
TOTAL	100.00%
Minority and Females	Percent of Businesses
Minority Business Enterprises	34.36%
Caucasian Female Business Enterprises	9.29%
Disadvantaged Business Enterprises	43.65%
Non Disadvantaged Business Enterprises	56.35%
TOTAL	100.00%



D. *Miscellaneous and Other Professional Services Prime Contractor Availability*

The distribution of available miscellaneous and other professional services prime contractors is summarized in Table 6.16 below. These ethnic and gender groups are defined in Table 3.01 of *Chapter 3: Prime Contractor Utilization Analysis*.

African Americans account for 13.36 percent of the miscellaneous and other professional services businesses in Metro's market area.

Asian-Pacific Americans account for 10.53 percent of the miscellaneous and other professional services businesses in Metro's market area.

Subcontinent Asian Americans account for 2.1 percent of the miscellaneous and other professional services businesses in Metro's market area.

Hispanic Americans account for 13.22 percent of the miscellaneous and other professional services businesses in Metro's market area.

Native Americans account for 0.49 percent of the miscellaneous and other professional services businesses in Metro's market area.

Minority Business Enterprises account for 39.71 percent of the miscellaneous and other professional services businesses in Metro's market area.

Caucasian Female Business Enterprises account for 13.04 percent of the miscellaneous and other professional services in Metro's market area.

Disadvantaged Business Enterprises account for 52.75 percent of the miscellaneous and other professional services businesses in Metro's market area.

Non-Disadvantaged Business Enterprises account for 47.25 percent of the miscellaneous and other professional services businesses in Metro's market area.



Table 6.16: Available Miscellaneous and Other Professional Services Prime Contractors

Ethnicity	Percent of Businesses
African Americans	13.36%
Asian-Pacific Americans	10.53%
Subcontinent Asian Americans	2.10%
Hispanic Americans	13.22%
Native Americans	0.49%
Caucasian Females	13.04%
Non-Minority Males	47.25%
TOTAL	100.00%
Ethnicity and Gender	Percent of Businesses
African American Females	6.63%
African American Males	6.74%
Asian-Pacific American Females	3.93%
Asian-Pacific American Males	6.60%
Subcontinent Asian American Females	0.62%
Subcontinent Asian American Males	1.49%
Hispanic American Females	5.22%
Hispanic American Males	8.00%
Native American Females	0.19%
Native American Males	0.30%
Caucasian Females	13.04%
Caucasian Males	47.25%
TOTAL	100.00%
Minority and Gender	Percent of Businesses
Minority Females	16.59%
Minority Males	23.12%
Caucasian Females	13.04%
Non-Minority Males	47.25%
TOTAL	100.00%
Minority and Females	Percent of Businesses
Minority Business Enterprises	39.71%
Caucasian Female Business Enterprises	13.04%
Disadvantaged Business Enterprises	52.75%
Non Disadvantaged Business Enterprises	47.25%
TOTAL	100.00%



E. Goods and Other Services Prime Contractor Availability

The distribution of available goods and other services prime contractors is summarized in Table 6.17 below. These ethnic and gender groups are defined in Table 3.01 of *Chapter 3: Prime Contractor Utilization Analysis*.

African Americans account for 9.92 percent of the goods and other services businesses in Metro's market area.

Asian-Pacific Americans account for 7.88 percent of the goods and other services businesses in Metro's market area.

Subcontinent Asian Americans account for 1.82 percent of the goods and other services businesses in Metro's market area.

Hispanic Americans account for 12.36 percent of the goods and other services businesses in Metro's market area.

Native Americans account for 0.27 percent of the goods and other services businesses in Metro's market area.

Minority Business Enterprises account for 32.26 percent of the goods and other services businesses in Metro's market area.

Caucasian Female Business Enterprises account for 7.73 percent of the goods and other services businesses in Metro's market area.

Disadvantaged Female Business Enterprises account for 39.99 percent of the goods and other services businesses in Metro's market area.

Non-Disadvantaged Business Enterprises account for 60.01 percent of the goods and other services businesses in Metro's market area.



Table 6.17: Goods and Other Services Prime Contractors

Ethnicity	Percent of Businesses
African Americans	9.92%
Asian-Pacific Americans	7.88%
Subcontinent Asian Americans	1.82%
Hispanic Americans	12.36%
Native Americans	0.27%
Caucasian Females	7.73%
Non-Minority Males	60.01%
TOTAL	100.00%
Ethnicity and Gender	Percent of Businesses
African American Females	4.19%
African American Males	5.74%
Asian-Pacific American Females	2.42%
Asian-Pacific American Males	5.47%
Subcontinent Asian American Females	0.40%
Subcontinent Asian American Males	1.42%
Hispanic American Females	3.61%
Hispanic American Males	8.76%
Native American Females	0.27%
Native American Males	0.00%
Caucasian Females	7.73%
Caucasian Males	60.01%
TOTAL	100.00%
Minority and Gender	Percent of Businesses
Minority Females	10.87%
Minority Males	21.39%
Caucasian Females	7.73%
Non-Minority Males	60.01%
TOTAL	100.00%
Minority and Females	Percent of Businesses
Minority Business Enterprises	32.26%
Caucasian Female Business Enterprises	7.73%
Disadvantaged Business Enterprises	39.99%
Non Disadvantaged Business Enterprises	60.01%
TOTAL	100.00%



VI. SUBCONTRACTOR AVAILABILITY ANALYSIS

A. Sources of Potentially Willing and Able Subcontractors and Availability

All available prime contractors were included in the calculation of subcontractor availability. Additional subcontractors in Metro's market area were identified using the source listed in Table 6.18.

Table 6.18: Unique Subcontractor Availability Data Sources

Type of Record	Type of Information
Subcontract records provided by Metro	DBEs and Non-DBEs

B. Determination of Subcontractor Willingness and Capacity

Subcontractor availability was limited to businesses determined to be willing and able to perform as prime contractors and businesses utilized as subcontractors; therefore, the determination of willingness was achieved. It is notable that using this method to identify subcontractors verified the business's capacity, although *Crososn* does not require a measure of subcontractor capacity.

C. Size of Subcontracts Analyzed

Metro's construction, architecture and engineering, and miscellaneous and professional services subcontracts were analyzed to determine the size of awarded contracts, and, therefore, the capacity required to perform on Metro's subcontracts. Metro's subcontracts were analyzed during the January 1, 2008 to December 31, 2010 study period.

The subcontract size distribution illustrates the fact that the majority of Metro's subcontracts were under \$25,000. This distribution also illustrates that limited capacity is needed to perform the overwhelming majority of Metro's subcontracts.

Metro's subcontracts were grouped into eight dollar ranges.⁷ Each award was analyzed to determine the number and percentage of subcontracts that fall within the eight size categories. The size distribution of subcontracts awarded to non-minority males was then

⁷ The eight dollar ranges are \$1 to \$24,999; \$25,000 to \$49,999; \$50,000 to \$99,999; \$100,000 to \$249,999; \$250,000 to \$499,999; \$500,000 to \$999,999; \$1,000,000 to \$2,999,999; and \$3,000,000 and greater.



compared to the size distribution of contracts awarded to Caucasian females, minority females, and minority males.

- **Metro Subcontract Size Analysis: January 1, 2008 to December 31, 2010**

The analysis in Table 6.19, which combines all industries, demonstrates that 44.53 percent of Metro's subcontracts were less than \$25,000; 67.97 percent were less than \$100,000; and 88.67 percent were less than \$500,000. Only 11.33 percent of Metro's subcontracts were \$500,000 or more.

- 1. Construction Subcontracts by Size**

Table 6.20 depicts Metro's construction subcontracts awarded within the eight dollar ranges where 56.49 percent of construction subcontracts were valued at less than \$25,000; 77.27 percent were less than \$100,000; and 92.86 percent were less than \$500,000.

- 2. Architecture and Engineering Subcontracts by Size**

Table 6.21 depicts Metro's architecture and engineering subcontracts within the eight dollar ranges where 13.56 percent of non-building construction subcontracts were valued at less than \$25,000; 45.76 percent were less than \$100,000; and 71.19 percent were less than \$500,000.

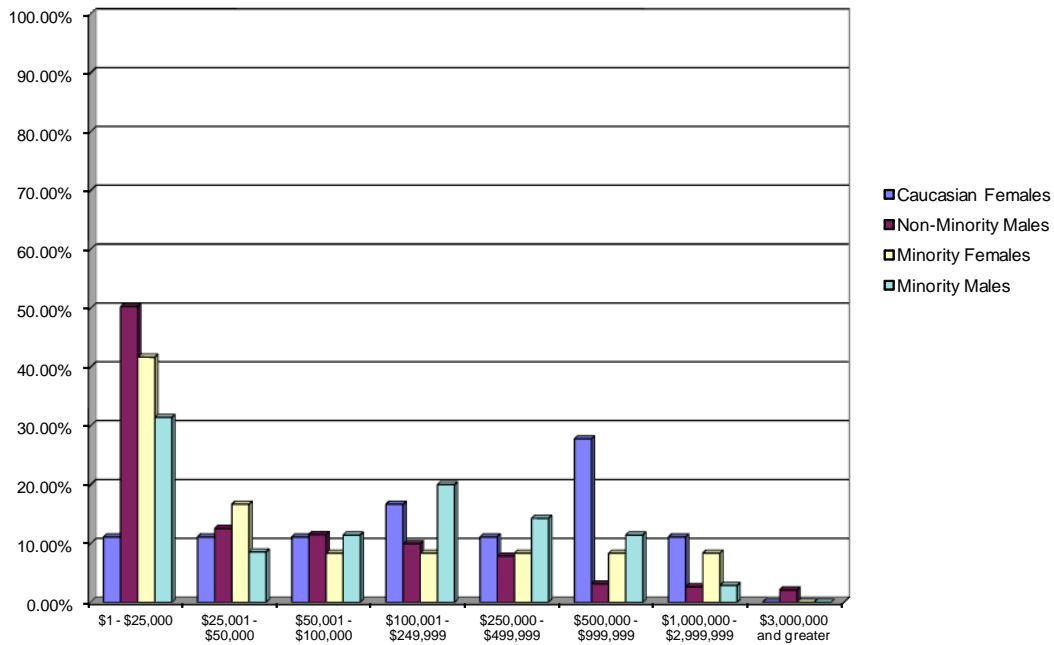
- 3. Miscellaneous and Other Professional Services Subcontracts by Size**

Table 6.22 depicts Metro's miscellaneous and other professional services subcontracts within the eight dollar ranges where 34.19 percent of engineering professional services subcontracts were valued at less than \$25,000; 65.12 percent were less than \$100,000; and 97.67 percent were less than \$500,000.



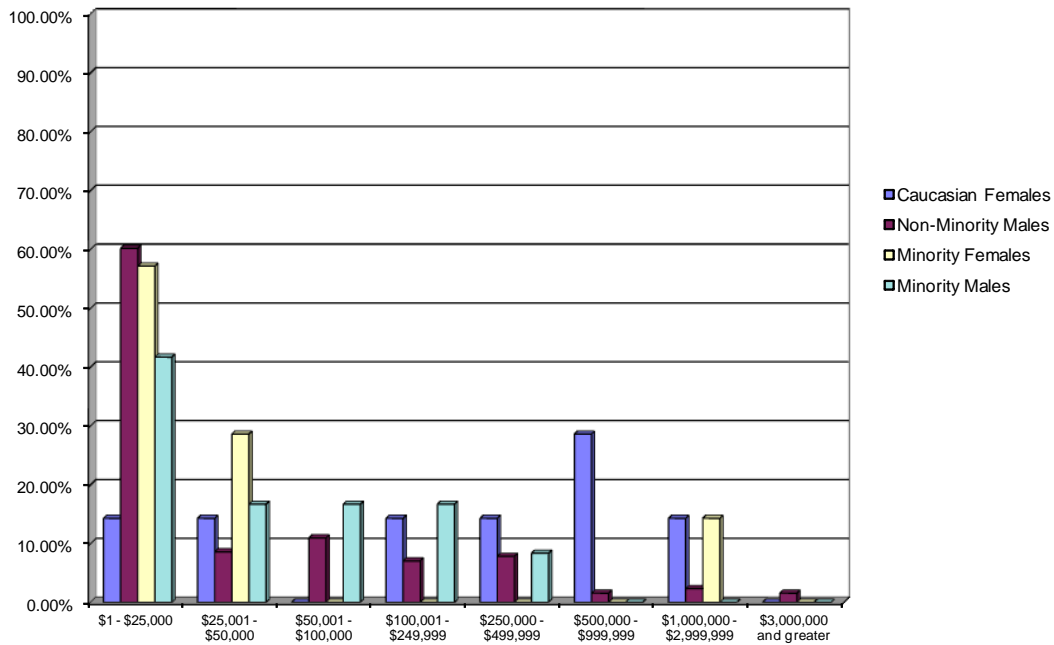
**Table 6.19: Subcontracts by Size: All Industries,
January 1, 2008 to December 31, 2010**

Size	Non-Minority				Minority				Total	
	Females		Males		Females		Males		Freq	Percent
	Freq	Percent	Freq	Percent	Freq	Percent	Freq	Percent		
\$1 - \$25,000	2	11.11%	96	50.26%	5	41.67%	11	31.43%	114	44.53%
\$25,001 - \$50,000	2	11.11%	24	12.57%	2	16.67%	3	8.57%	31	12.11%
\$50,001 - \$100,000	2	11.11%	22	11.52%	1	8.33%	4	11.43%	29	11.33%
\$100,001 - \$249,999	3	16.67%	19	9.95%	1	8.33%	7	20.00%	30	11.72%
\$250,000 - \$499,999	2	11.11%	15	7.85%	1	8.33%	5	14.29%	23	8.98%
\$500,000 - \$999,999	5	27.78%	6	3.14%	1	8.33%	4	11.43%	16	6.25%
\$1,000,000 - \$2,999,999	2	11.11%	5	2.62%	1	8.33%	1	2.86%	9	3.52%
\$3,000,000 and greater	0	0.00%	4	2.09%	0	0.00%	0	0.00%	4	1.56%
Total	18	100.00%	191	100.00%	12	100.00%	35	100.00%	256	100.00%



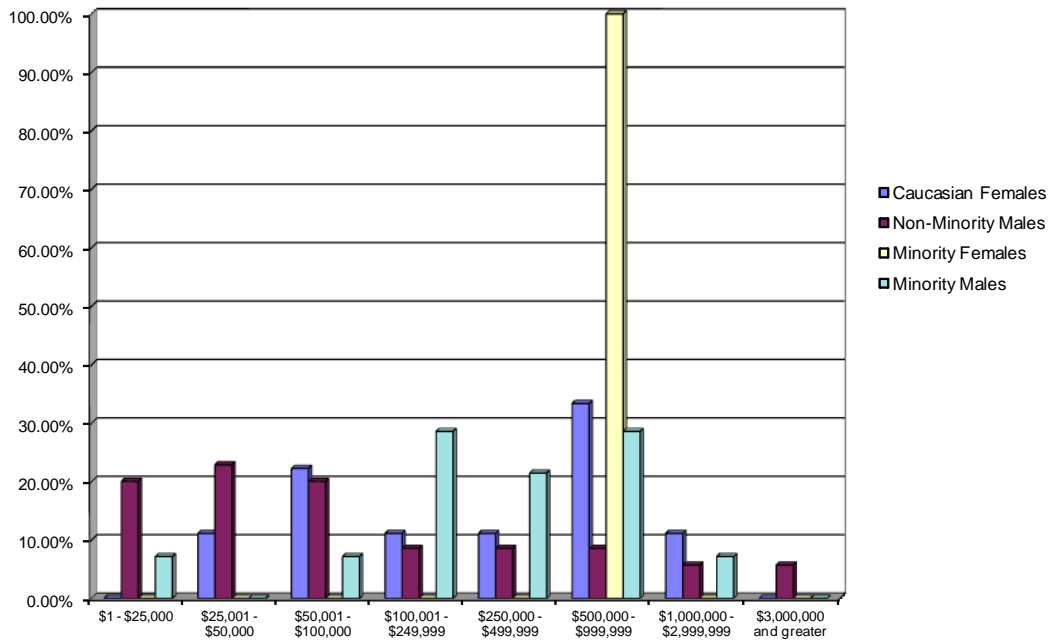
**Table 6.20: Construction Subcontracts by Size:
January 1, 2008 to December 31, 2010**

Size	Non-Minority				Minority				Total	
	Females		Males		Females		Males		Freq	Percent
	Freq	Percent	Freq	Percent	Freq	Percent	Freq	Percent		
\$1 - \$25,000	1	14.29%	77	60.16%	4	57.14%	5	41.67%	87	56.49%
\$25,001 - \$50,000	1	14.29%	11	8.59%	2	28.57%	2	16.67%	16	10.39%
\$50,001 - \$100,000	0	0.00%	14	10.94%	0	0.00%	2	16.67%	16	10.39%
\$100,001 - \$249,999	1	14.29%	9	7.03%	0	0.00%	2	16.67%	12	7.79%
\$250,000 - \$499,999	1	14.29%	10	7.81%	0	0.00%	1	8.33%	12	7.79%
\$500,000 - \$999,999	2	28.57%	2	1.56%	0	0.00%	0	0.00%	4	2.60%
\$1,000,000 - \$2,999,999	1	14.29%	3	2.34%	1	14.29%	0	0.00%	5	3.25%
\$3,000,000 and greater	0	0.00%	2	1.56%	0	0.00%	0	0.00%	2	1.30%
Total	7	100.00%	128	100.00%	7	100.00%	12	100.00%	154	100.00%



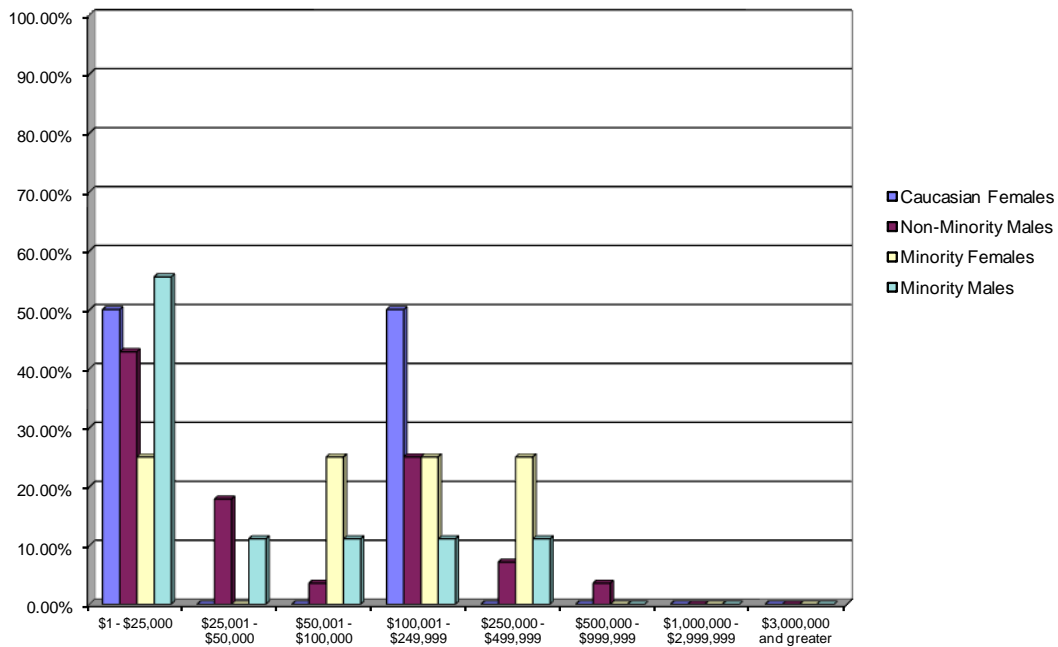
**Table 6.21: Architecture and Engineering Subcontracts by Size:
January 1, 2008 to December 31, 2010**

Size	Non-Minority				Minority				Total	
	Females		Males		Females		Males		Freq	Percent
	Freq	Percent	Freq	Percent	Freq	Percent	Freq	Percent		
\$1 - \$25,000	0	0.00%	7	20.00%	0	0.00%	1	7.14%	8	13.56%
\$25,001 - \$50,000	1	11.11%	8	22.86%	0	0.00%	0	0.00%	9	15.25%
\$50,001 - \$100,000	2	22.22%	7	20.00%	0	0.00%	1	7.14%	10	16.95%
\$100,001 - \$249,999	1	11.11%	3	8.57%	0	0.00%	4	28.57%	8	13.56%
\$250,000 - \$499,999	1	11.11%	3	8.57%	0	0.00%	3	21.43%	7	11.86%
\$500,000 - \$999,999	3	33.33%	3	8.57%	1	100.00%	4	28.57%	11	18.64%
\$1,000,000 - \$2,999,999	1	11.11%	2	5.71%	0	0.00%	1	7.14%	4	6.78%
\$3,000,000 and greater	0	0.00%	2	5.71%	0	0.00%	0	0.00%	2	3.39%
Total	9	100.00%	35	100.00%	1	100.00%	14	100.00%	59	100.00%



**Table 6.22: Miscellaneous and Other Professional Services Subcontracts by Size:
January 1, 2008 to December 31, 2010**

Size	Non-Minority				Minority				Total	
	Females		Males		Females		Males		Freq	Percent
	Freq	Percent	Freq	Percent	Freq	Percent	Freq	Percent		
\$1 - \$25,000	1	50.00%	12	42.86%	1	25.00%	5	55.56%	19	44.19%
\$25,001 - \$50,000	0	0.00%	5	17.86%	0	0.00%	1	11.11%	6	13.95%
\$50,001 - \$100,000	0	0.00%	1	3.57%	1	25.00%	1	11.11%	3	6.98%
\$100,001 - \$249,999	1	50.00%	7	25.00%	1	25.00%	1	11.11%	10	23.26%
\$250,000 - \$499,999	0	0.00%	2	7.14%	1	25.00%	1	11.11%	4	9.30%
\$500,000 - \$999,999	0	0.00%	1	3.57%	0	0.00%	0	0.00%	1	2.33%
\$1,000,000 - \$2,999,999	0	0.00%	0	0.00%	0	0.00%	0	0.00%	0	0.00%
\$3,000,000 and greater	0	0.00%	0	0.00%	0	0.00%	0	0.00%	0	0.00%
Total	2	100.00%	28	100.00%	4	100.00%	9	100.00%	43	100.00%



D. Construction Subcontractor Availability

The distribution of available construction subcontractors is summarized in Table 6.23.

African Americans account for 10.12 percent of the construction firms in Metro's market area.

Asian-Pacific Americans account for 7.75 percent of the construction firms in Metro's market area.

Subcontinent Asian Americans account for 1.22 percent of the construction firms in Metro's market area.

Hispanic Americans account for 17.59 percent of the construction firms in Metro's market area.

Native Americans account for 0.85 percent of the construction firms in Metro's market area.

Minority Business Enterprises account for 37.53 percent of the construction firms in Metro's market area.

Caucasian Female Business Enterprises account for 6.51 percent of the construction firms in Metro's market area.

Disadvantaged Business Enterprises account for 44.04 percent of the construction firms in Metro's market area.

Non Disadvantaged Business Enterprises account for 55.96 percent of the construction firms in Metro's market area.



Table 6.23: Available Construction Subcontractors

Group	Percent of Businesses
African Americans	10.12%
Asian-Pacific Americans	7.75%
Subcontinent Asian Americans	1.22%
Hispanic Americans	17.59%
Native Americans	0.85%
Caucasian Females	6.51%
Non-Minority Males	55.96%
TOTAL	100.00%
Ethnicity and Gender	Percent of Businesses
African American Females	3.15%
African American Males	6.97%
Asian-Pacific American Females	1.99%
Asian-Pacific American Males	5.75%
Subcontinent Asian American Females	0.19%
Subcontinent Asian American Males	1.03%
Hispanic American Females	3.63%
Hispanic American Males	13.96%
Native American Females	0.32%
Native American Males	0.53%
Caucasian Females	6.51%
Caucasian Males	55.96%
TOTAL	100.00%
Minority and Gender	Percent of Businesses
Minority Females	9.28%
Minority Males	28.24%
Caucasian Females	6.51%
Non-Minority Males	55.96%
TOTAL	100.00%
Minority and Females	Percent of Businesses
Minority Business Enterprises	37.53%
Caucasian Female Business Enterprises	6.51%
Disadvantaged Business Enterprises	44.04%
Non Disadvantaged Business Enterprises	55.96%
TOTAL	100.00%



E. Architecture and Engineering Subcontractor Availability

The distribution of available architecture and engineering subcontractors is summarized in Table 6.24.

African Americans account for 9.5 percent of the architecture and engineering firms in Metro's market area.

Asian-Pacific Americans account for 10.7 percent of the architecture and engineering firms in Metro's market area.

Subcontinent Asian Americans account for 2.85 percent of the architecture and engineering firms in Metro's market area.

Hispanic Americans account for 12.43 percent of the architecture and engineering firms in Metro's market area.

Native Americans account for 0.77 percent of the architecture and engineering firms in Metro's market area.

Minority Business Enterprises account for 36.25 percent of the architecture and engineering firms in Metro's market area.

Caucasian Female Business Enterprises account for 10.1 percent of the architecture and engineering firms in Metro's market area.

Disadvantaged Business Enterprises account for 46.34 percent of the architecture and engineering firms in Metro's market area.

Non Disadvantaged Business Enterprises account for 53.66 percent of the architecture and engineering firms in Metro's market area.



Table 6.24: Available Architecture and Engineering Subcontractors

Group	Percent of Businesses
African Americans	9.50%
Asian-Pacific Americans	10.70%
Subcontinent Asian Americans	2.85%
Hispanic Americans	12.43%
Native Americans	0.77%
Caucasian Females	10.10%
Non-Minority Males	53.66%
TOTAL	100.00%
Ethnicity and Gender	Percent of Businesses
African American Females	4.03%
African American Males	5.47%
Asian-Pacific American Females	2.95%
Asian-Pacific American Males	7.75%
Subcontinent Asian American Females	0.52%
Subcontinent Asian American Males	2.33%
Hispanic American Females	3.60%
Hispanic American Males	8.83%
Native American Females	0.23%
Native American Males	0.54%
Caucasian Females	10.10%
Caucasian Males	53.66%
TOTAL	100.00%
Minority and Gender	Percent of Businesses
Minority Females	11.34%
Minority Males	24.91%
Caucasian Females	10.10%
Non-Minority Males	53.66%
TOTAL	100.00%
Minority and Females	Percent of Businesses
Minority Business Enterprises	36.25%
Caucasian Female Business Enterprises	10.10%
Disadvantaged Business Enterprises	46.34%
Non Disadvantaged Business Enterprises	53.66%
TOTAL	100.00%



F. *Miscellaneous and Other Professional Services Subcontractor Availability*

The distribution of available miscellaneous and other professional services subcontractors is summarized in Table 6.25.

African Americans account for 10.6 percent of the miscellaneous and other professional services firms in Metro's market area.

Asian-Pacific Americans account for 10.28 percent of the miscellaneous and other professional services firms in Metro's market area.

Subcontinent Asian Americans account for 2.91 percent of the miscellaneous and other professional services firms in Metro's market area.

Hispanic Americans account for 12.65 percent of the miscellaneous and other professional services firms in Metro's market area.

Native Americans account for 0.68 percent of the miscellaneous and other professional services firms in Metro's market area.

Minority Business Enterprises account for 37.12 percent of the miscellaneous and other professional services firms in Metro's market area.

Caucasian Female Business Enterprises account for 12.18 percent of the miscellaneous and other professional services firms in Metro's market area.

Disadvantaged Business Enterprises account for 49.3 percent of the miscellaneous and other professional services firms in Metro's market area.

Non Disadvantaged Business Enterprises account for 50.7 percent of the miscellaneous and other professional services firms in Metro's market area.



Table 6.25: Available Miscellaneous and Other Professional Services Subcontractors

Group	Percent of Businesses
African Americans	10.60%
Asian-Pacific Americans	10.28%
Subcontinent Asian Americans	2.91%
Hispanic Americans	12.65%
Native Americans	0.68%
Caucasian Females	12.18%
Non-Minority Males	50.70%
TOTAL	100.00%
Ethnicity and Gender	Percent of Businesses
African American Females	4.99%
African American Males	5.61%
Asian-Pacific American Females	3.50%
Asian-Pacific American Males	6.78%
Subcontinent Asian American Females	0.66%
Subcontinent Asian American Males	2.25%
Hispanic American Females	4.21%
Hispanic American Males	8.44%
Native American Females	0.25%
Native American Males	0.44%
Caucasian Females	12.18%
Caucasian Males	50.70%
TOTAL	100.00%
Minority and Gender	Percent of Businesses
Minority Females	13.60%
Minority Males	23.52%
Caucasian Females	12.18%
Non-Minority Males	50.70%
TOTAL	100.00%
Minority and Females	Percent of Businesses
Minority Business Enterprises	37.12%
Caucasian Female Business Enterprises	12.18%
Disadvantaged Business Enterprises	49.30%
Non Disadvantaged Business Enterprises	50.70%
TOTAL	100.00%

