

Measure M Metro Active Transport (MAT) Program At-A-Glance

Overview

Measure M establishes the Metro Active Transport (MAT) Program, which over the course of the next 40 years, is anticipated to fund more than \$857 million (2015 \$) in active transportation infrastructure projects throughout the region. The Program will fund projects to improve and grow the active transportation network and expand the reach of transit.

The Program funds two categories of eligible activities:

- First/Last Mile (FLM) Priority Network Projects
- Active Transportation (AT) Corridors Projects

Cycle 1 Essentials

Overview

- **Total Available:** \$75M
- **Funding Years:** 2021 – 2025
- **Length:** 5 years
- **FLM Priority Network Category**
 - Up to 10 projects
 - Possible Award Amount: \$500K to \$5M per location
- **AT Corridors Category**
 - Up to 8 projects
 - Possible Award Amount: \$7M to \$8M

Cycle 1 Category: FLM Priority Network

Overview

- Total of \$37.5 million
- Deploy rapidly and pilot streamlined delivery in a concentrated radius (1-2 blocks)—up to ½ mile eligible
- Concept development through construction
- Metro’s role may vary by project

Selection Process

- 269 existing station locations ranked
- Top 138 ranked locations will be invited to submit a Letter of Interest
- Selected projects will enter into an agreement with Metro to initiate projects

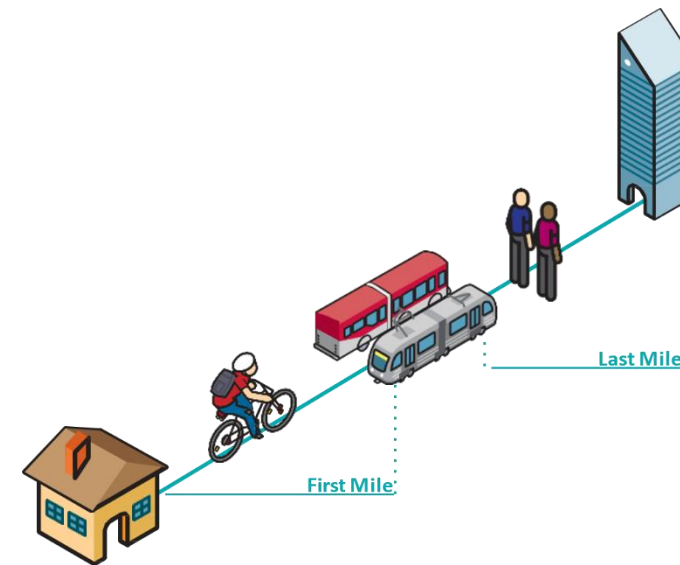
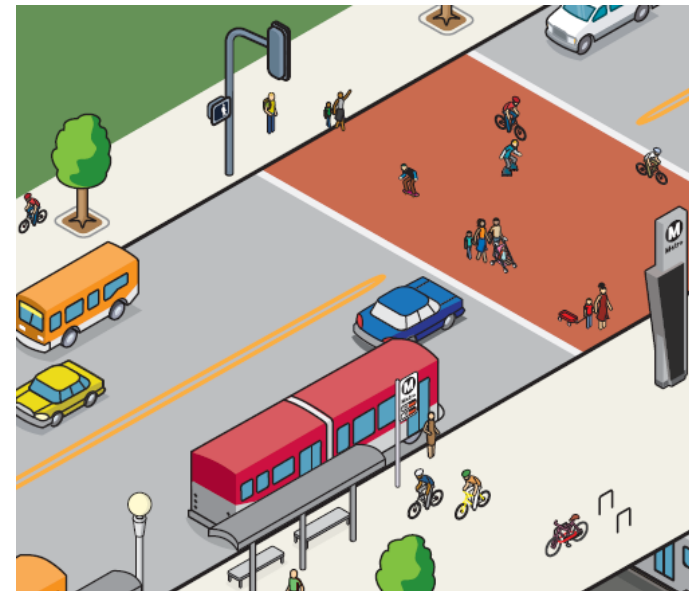
Cycle 1 Category: Active Transportation Corridors

Overview

- Total of \$37.5 million
- Develop corridors (3+ miles)
- Conceptual development through construction
- Metro’s role may vary by project

Selection Process

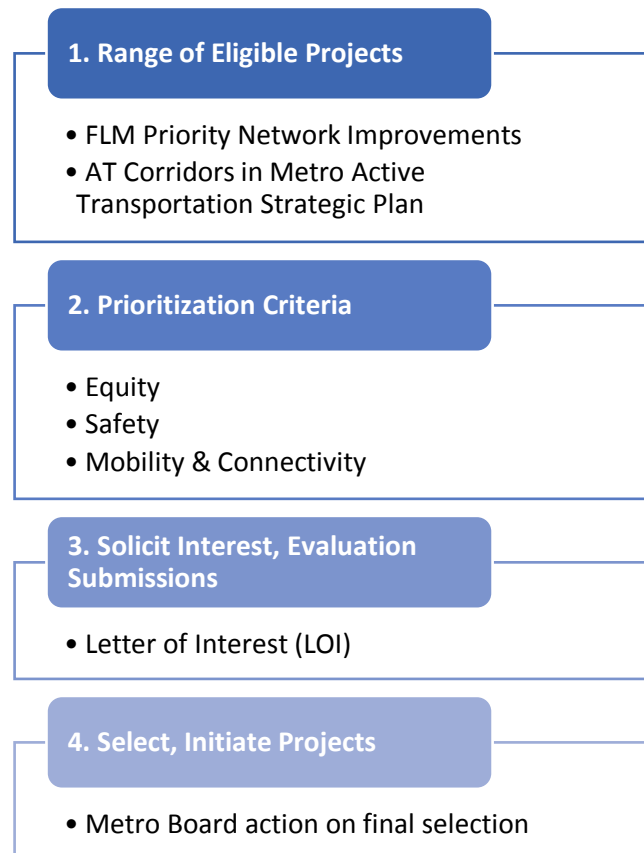
- 160 active transportation corridors ranked
- High-ranking Project Corridor Teams will be invited to submit a Letter of Interest
- Selected projects will enter into an agreement with Metro to initiate projects



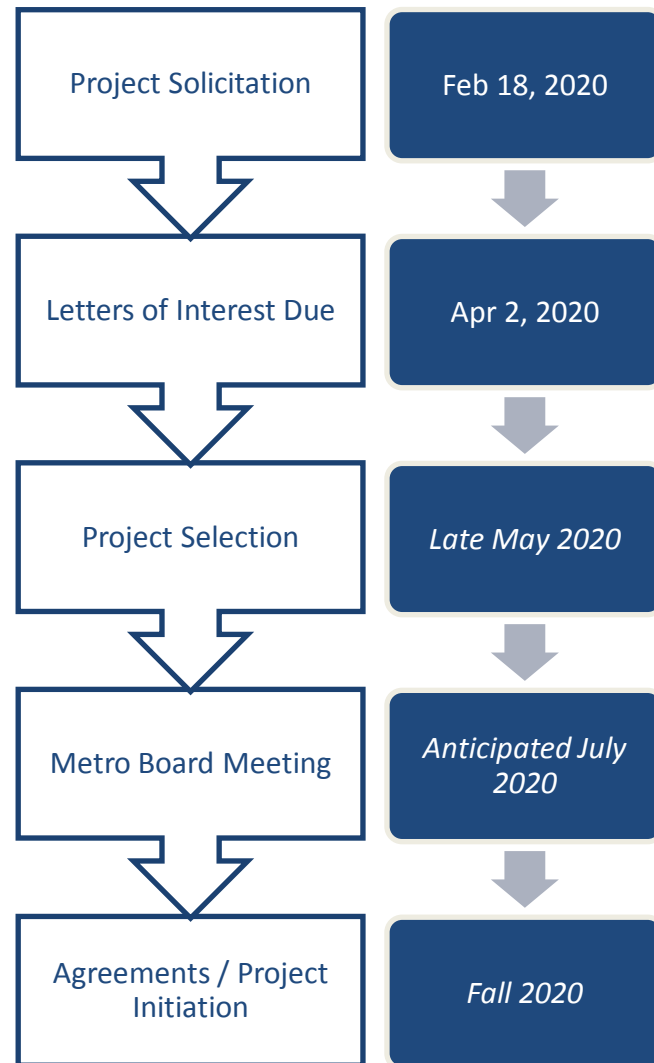
Selection Process

Projects eligible for MAT funding were derived from the Active Transportation Strategic Plan (ATSP, 2016) and FLM Priority Network. Projects were prioritized based on multiple criteria, including equity, safety, and mobility/connectivity factors. Based on the FLM and AT Corridors Prioritized Lists, jurisdictions will be invited to submit a Letter of Interest (LOI). Metro will evaluate the LOIs and staff will recommend projects to the Metro Board of Directors for approval. The Metro Board will approve funding and authorize contracting for the list of selected projects.

More details on the screening and prioritization process are available on the MAT Program website.



Cycle 1 Schedule



Further Information

For more information on the MAT Program, Administrative Procedures, Cycle 1 Solicitation, and the Prioritization Methodology and Ranked List, please visit the website at:

<https://www.metro.net/MATProgram>

Notes

