

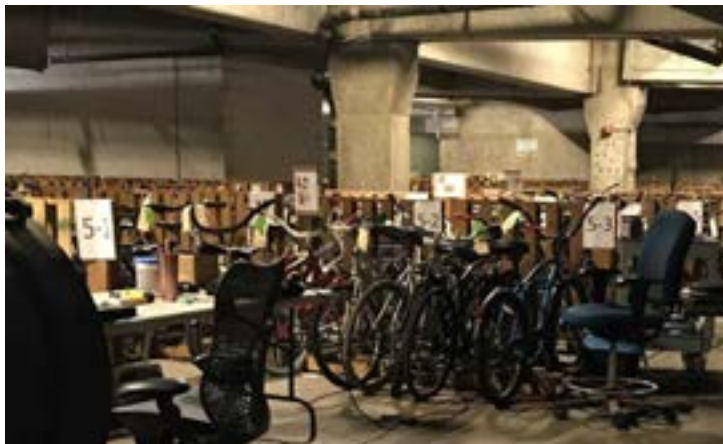


# Metro Adopt-a-Bike Program

# Metro Adopt-a-Bike Program

## Recommendation: Authorize the Metro Adopt-a-Bike Pilot Program

- 75% of the 400-500 bikes transported to Metro's Lost and Found facilities go unclaimed.
- State law requires Metro to store these bikes for 90 days, after that time they become Metro's property. Currently they are being sold in batches at auction.
- Revenue from auction does not offset cost of current process.
- Current procedure does not benefit LA County constituents, is not aligned with Metro Vision 2028 Strategic Plan to double non drive-alone trips, and does not contribute value to active transportation awareness.



Metro®

# Program Development

- Multiple Metro departments were consulted and it was determined that unclaimed bicycles are eligible for donation to the public after 90 days.
- The procedure for collecting lost and found bikes from Metro property and storing them would remain the same.
- Staff gathered feedback from stakeholders, active transportation advocacy groups, and other community-based organizations to understand potential paths and needs of administering a bicycle donation program in LA County.



# Program Vision

- Two-year pilot program.
- Prioritize regional distribution; Equity focus.
- Remain compliant with state laws regarding lost and found property
- Retain lost and found bicycles for 90 days
- Mini-grant program for Community Based Organization participation.
- Up to \$120,000 annual budget for mini-grant program.
- Additional Metro support will be available to organizations selected



# Mini-Grant Selection Process

- Organizations selection process based on geographic and equity focus.
- Additional scoring criteria will include capacity to distribute bicycles, safety and outreach approach, and experience working with disadvantaged or unhoused communities.
- Selected organizations are required to conduct bicycle distribution events at locations that they propose through their established community networks.
- Metro will also make our available facilities and special events for bicycle distribution, such as Open Streets and Bike Hubs.



# Next Steps

- Upon Board approval, staff will kick-off administration of the Metro Adopt-A-Bike Pilot Program.
- Donation events are anticipated to kick-off in summer 2021
- Staff will report back to the Board with an update in fall 2021.

