

# WIN-LA

WORKFORCE INITIATIVE NOW  
METRO LOS ANGELES



**Metro**

## Program Overview

**Workforce Initiative Now – Los Angeles (WIN-LA) is Metro’s workforce development program, established to focus on creating career pathways in the transportation industry.**

The core objective of WIN-LA is to help people obtain the education, training and support services needed to prepare them for opportunities within the transportation industry and within Metro.

WIN-LA isn’t just about a job, it’s about a career in transportation, one of the most dynamic and impactful industries in our country. One can seek an entry-level, mid-level or professional career. WIN-LA guides one’s steps to a career pathway through training and support.

As of September 2018, 50% of Metro’s workforce will be eligible for retirement by 2024.

WIN-LA career pathways consist of:

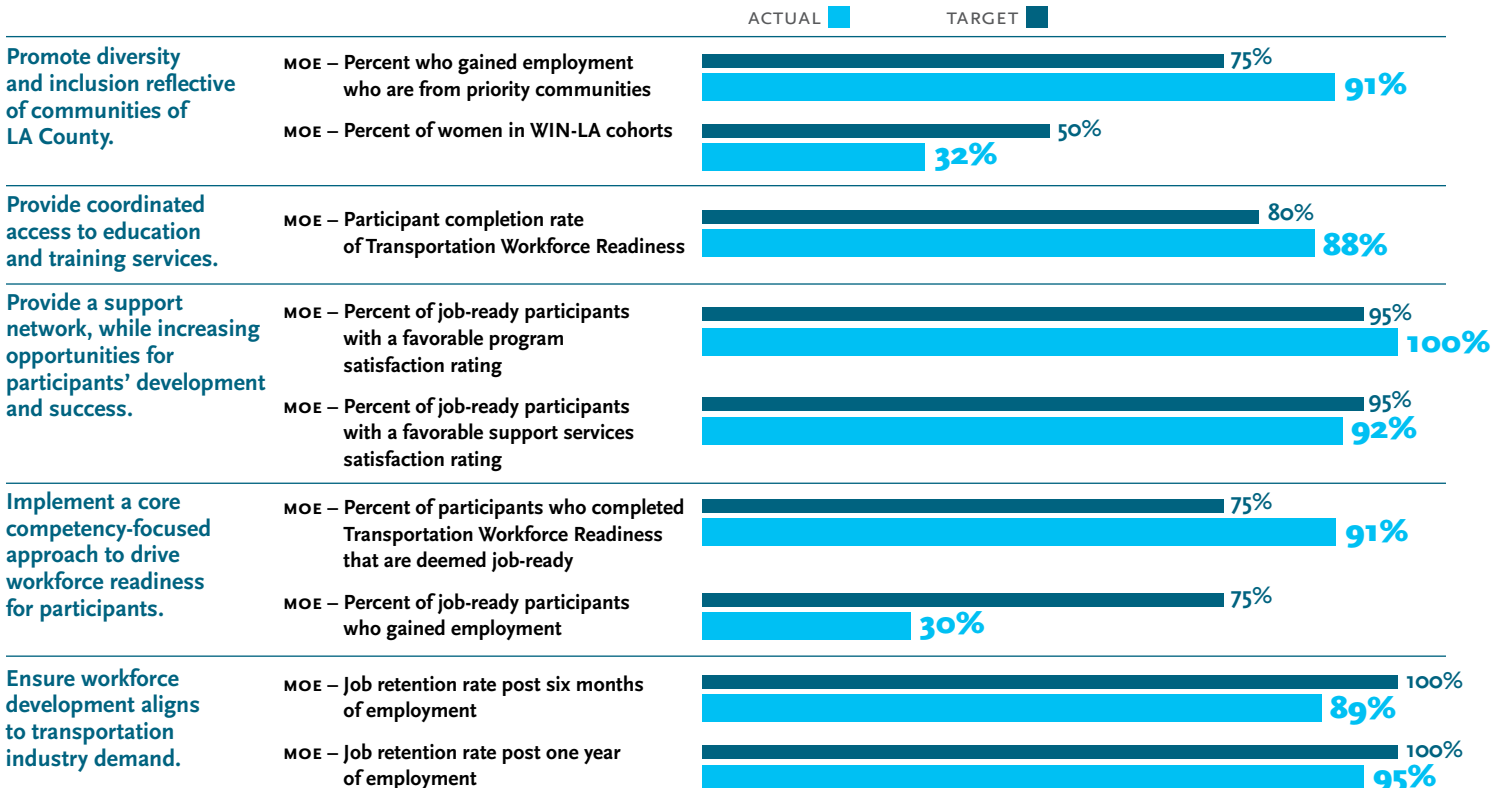
- > Construction
- > Operations/Maintenance
- > Administration
- > Professional Services



## WIN-LA COLLABORATIVE

WIN-LA is delivered through established regional partnerships between Metro, regional Workforce Development Board consortium, including the Los Angeles Regional Community College Consortium and the Transportation Workforce Institute, and community-based organizations.

## GOALS AND MEASURE OF EFFECTIVENESS

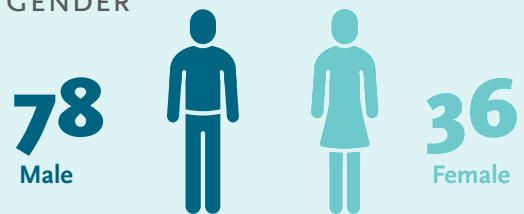


• MOEs from program inception through end of quarter

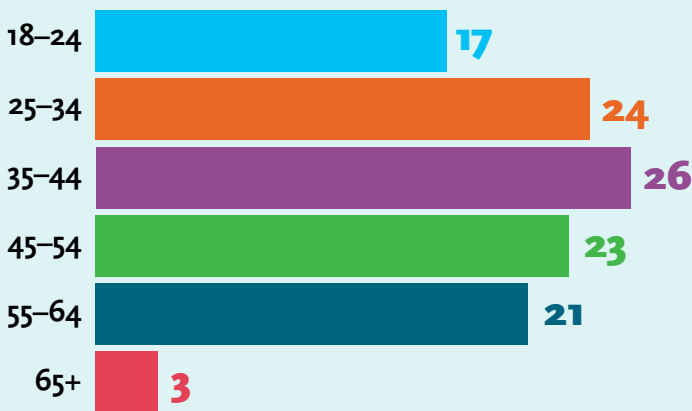
## TOTAL PARTICIPANTS

117 PARTICIPANTS

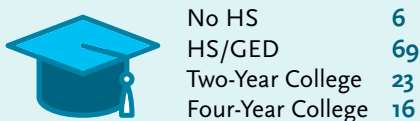
### GENDER



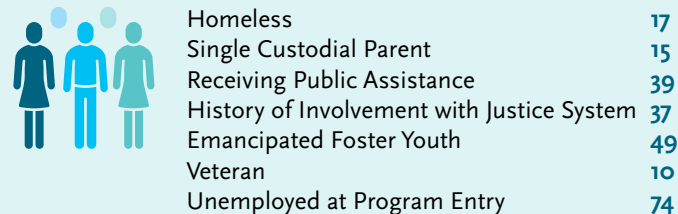
### AGE RANGE



### EDUCATION LEVEL



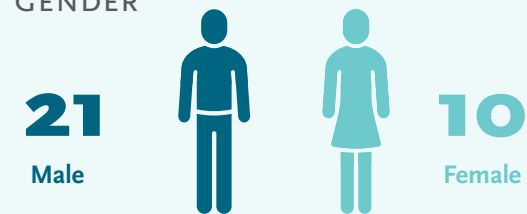
### PRIORITY COMMUNITIES



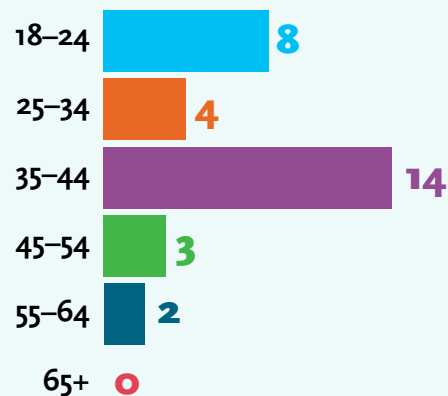
## EMPLOYED PARTICIPANTS

31 PARTICIPANTS

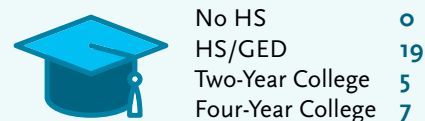
### GENDER



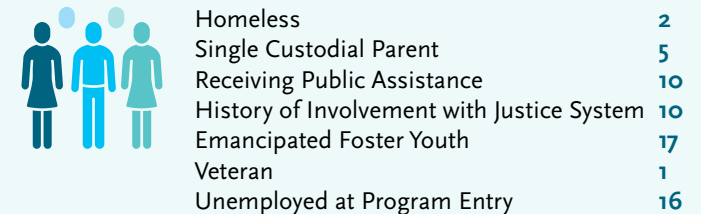
### AGE RANGE



### EDUCATION LEVEL



### PRIORITY COMMUNITIES



WIN-LA participants represent and embody the diverse communities of LA County. WIN-LA increases opportunities for residents by inclusion of priority populations from historically underrepresented communities that have met challenges. WIN-LA also targets outreach to community college students and women. Participants may be counted across multiple priority categories.

- Cohort enrollment based on completion of Transportation Workforce Readiness training
- Data reflects 77 of 80 participants from Cohort I and all 37 participants from Cohort II
- 43 participants from Cohort I have been deactivated based on 12 months of inactivity

Register online at [winla.metro.net](http://winla.metro.net).

For more information, please contact  
us at [winla@metro.net](mailto:winla@metro.net).

